

**Zeitschrift:** Eclogae Geologicae Helvetiae  
**Herausgeber:** Schweizerische Geologische Gesellschaft  
**Band:** 30 (1937)

**Anhang:** Tafeln Heft 2  
**Autor:** [s.n.]

### **Nutzungsbedingungen**

Die ETH-Bibliothek ist die Anbieterin der digitalisierten Zeitschriften. Sie besitzt keine Urheberrechte an den Zeitschriften und ist nicht verantwortlich für deren Inhalte. Die Rechte liegen in der Regel bei den Herausgebern beziehungsweise den externen Rechteinhabern. [Siehe Rechtliche Hinweise.](#)

### **Conditions d'utilisation**

L'ETH Library est le fournisseur des revues numérisées. Elle ne détient aucun droit d'auteur sur les revues et n'est pas responsable de leur contenu. En règle générale, les droits sont détenus par les éditeurs ou les détenteurs de droits externes. [Voir Informations légales.](#)

### **Terms of use**

The ETH Library is the provider of the digitised journals. It does not own any copyrights to the journals and is not responsible for their content. The rights usually lie with the publishers or the external rights holders. [See Legal notice.](#)

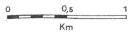
**Download PDF:** 30.03.2025

**ETH-Bibliothek Zürich, E-Periodica, <https://www.e-periodica.ch>**

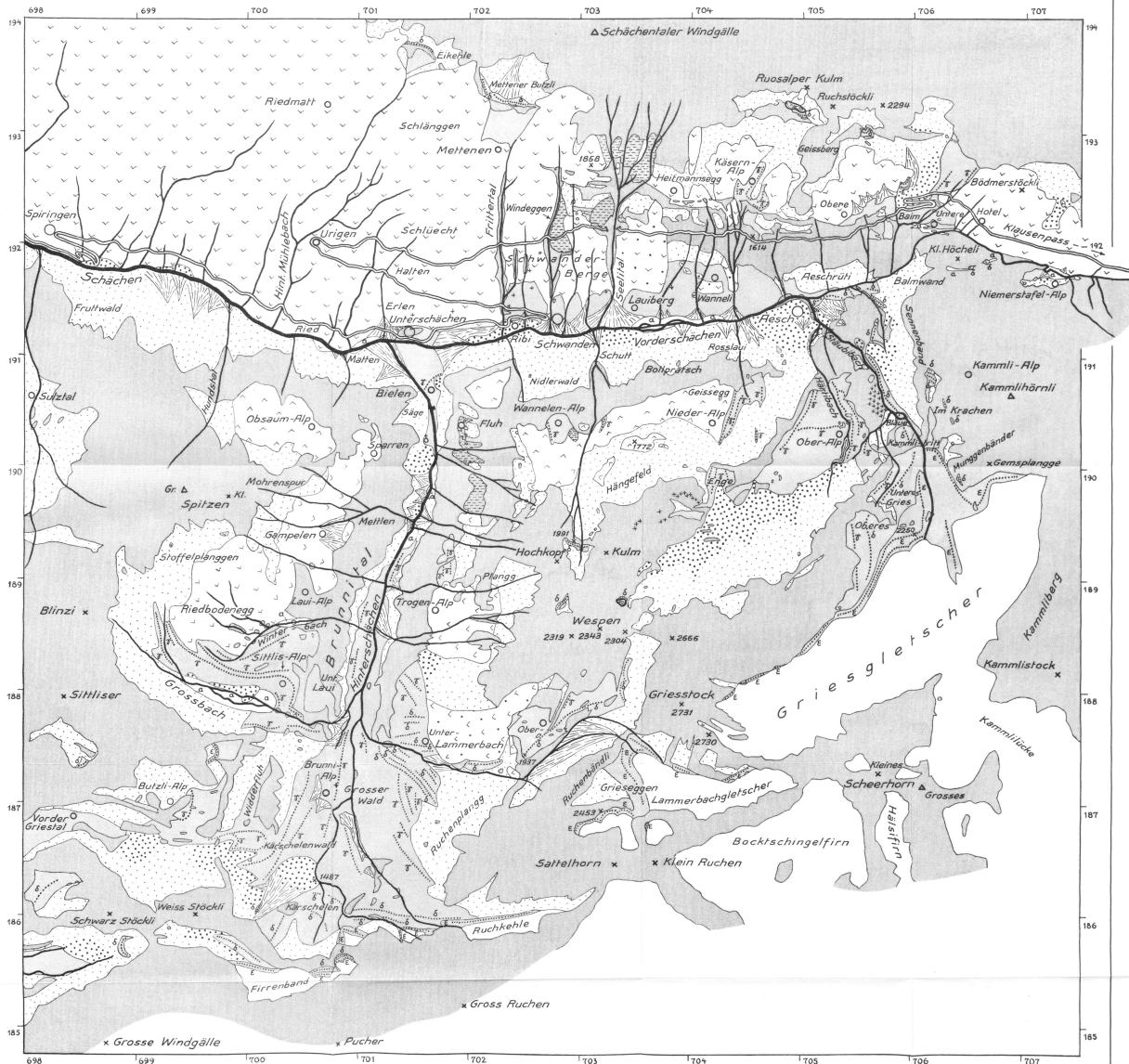
Karte der  
**QUARTAERBILDUNGEN**  
 des  
**OBEREN SCHÄCHENTALES**  
 von  
**WERNER BRÜCKNER**

Westliche Randpartie ergänzt nach den  
 Aufnahmen von  
 J. J. JENNY

1:25.000



- Sumpf
- Alluvialböden
- Bachschuttkegel
- Gehängeschutt
- Berggürze
- Sackungen aus unfestem Gesteinsmaterial und kleineren, im Schichtverband ausgerichteten Felsmassen
- Sackungen aus festem Gesteinsmaterial
- Gletscher
- Gruppen erratischer Blöcke und einzelne besonders grosse Blöcke, z. T. ausserhalb der zusammenhängenden Moränendecken
- Razaite Moränen mit Wällen, einschli. Schneehaldenmoränen
- Moränen des Daunstadiums mit Wällen
- Moränen des Gschnitzstadiums mit Wällen
- Moränen des Böhlistadiums
- Anstehender Fels



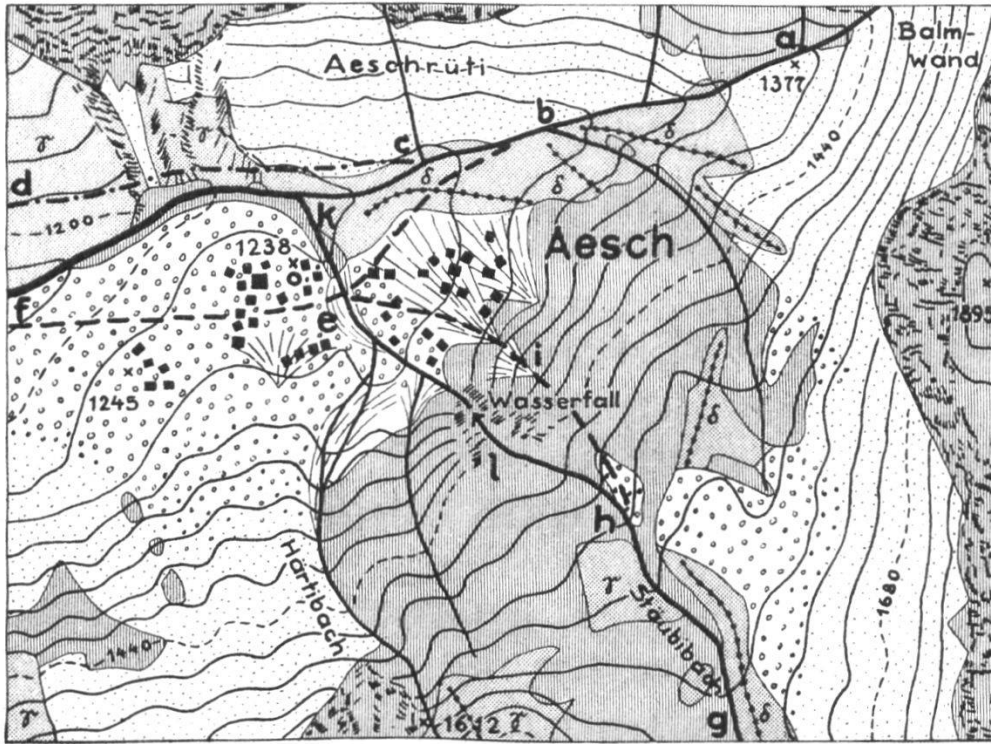


Fig. 1. Skizze der Bachepigenesen bei Aesch.

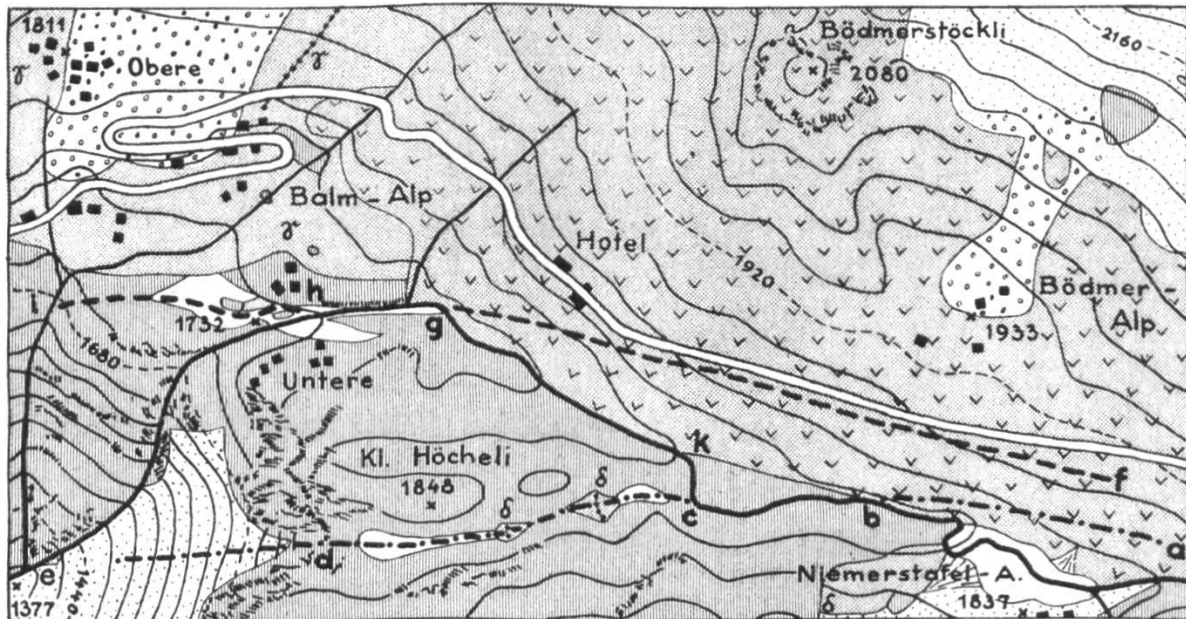
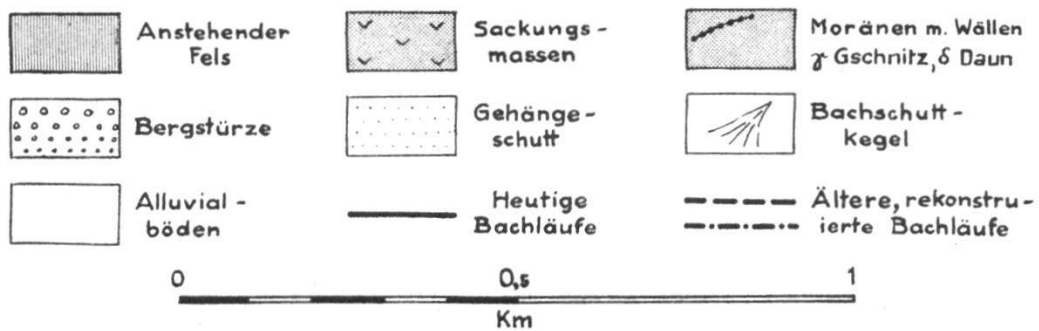
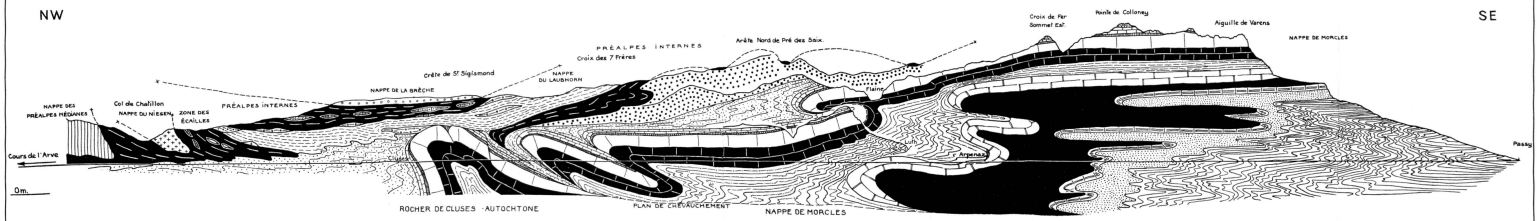
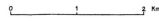


Fig. 2. Skizze der Bachepigenesen westlich vom Klausenpass.



### PROFIL GÉOLOGIQUE DE LA RIVE DROITE DE L'ARVE par LÉON W. COLLET et ARNOLD LILLIE, 1937

Echelle 1:50,000

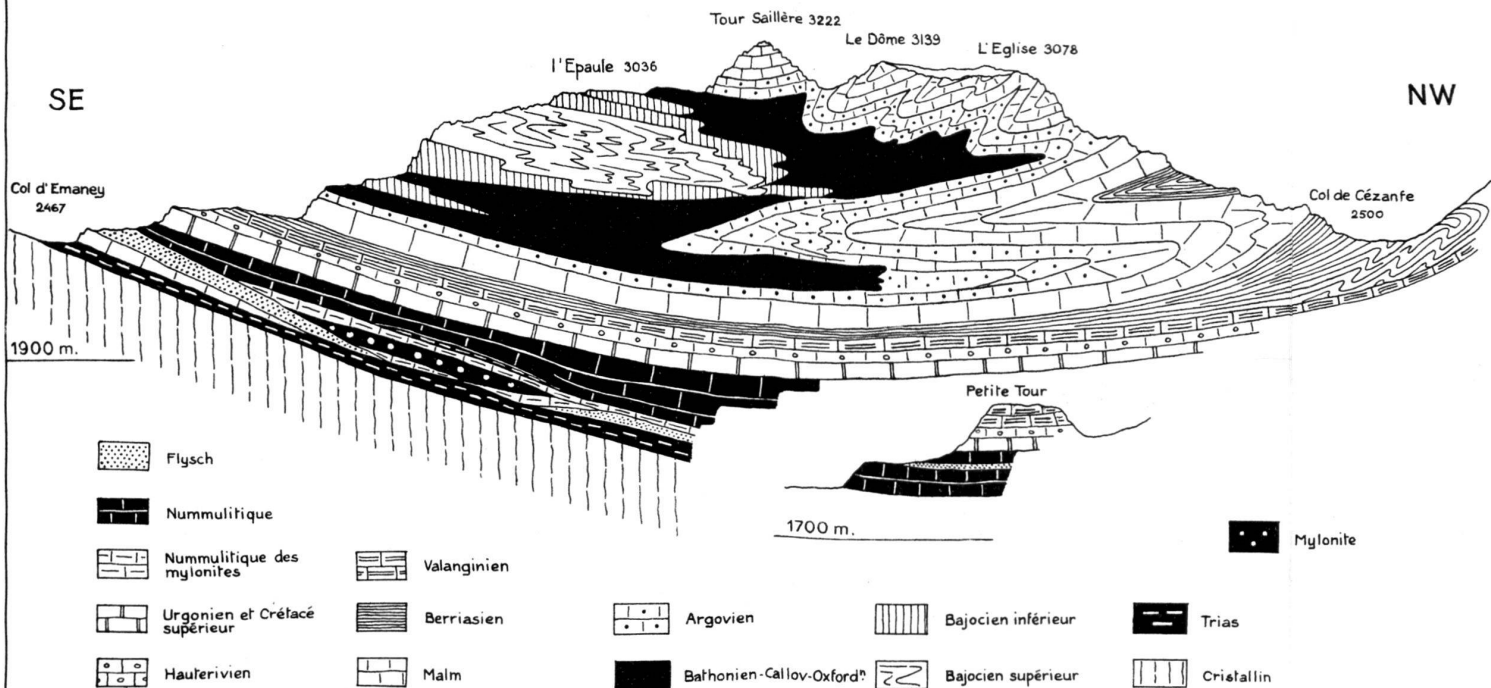


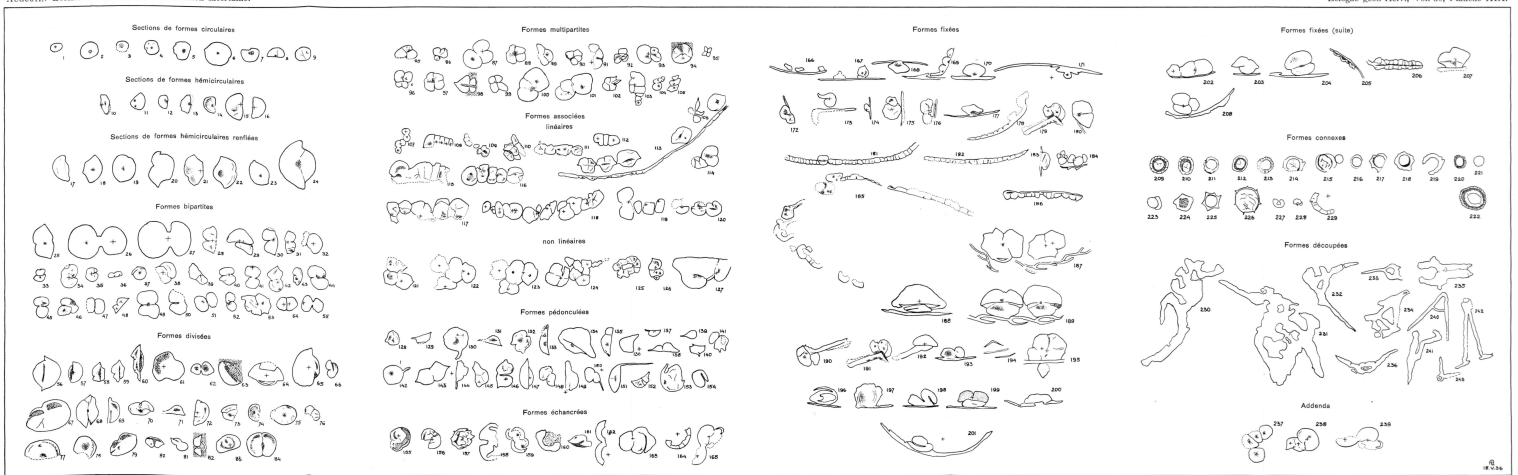
# PROFIL GÉOLOGIQUE DE LA TOUR SAILLÈRE

par LÉON W. COLLET, 1937

Echelle 1:25 000

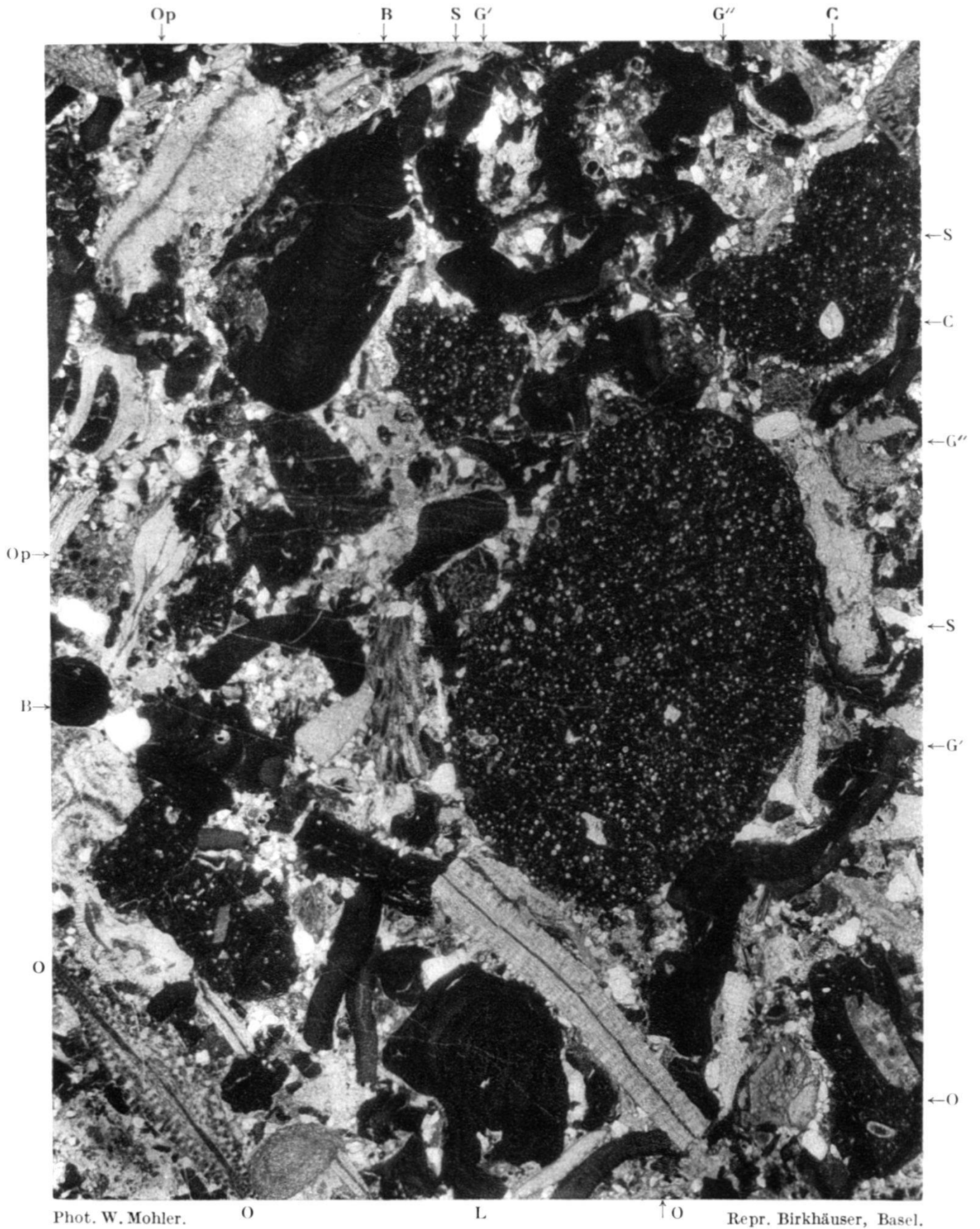
0 500 m 1 Km





Echelle  
5 0,1 0,2 0,3

Lorsque la croix noire ne correspond pas au noyau, son centre est marqué par +



Phot. W. Mohler.

O

L

↑O

Repr. Birkhäuser, Basel.

*Obereocaener Lithothamnienkalk aus dem Pilatusgebiet.*

(Dünnschliff, Verg. 11×) mit drei Einschlüssen von Seewerkalk (S), darin *Globotruncana linnei* (D'ORB.) (G' und G''), zahlreiche Orbulinarien, *Cristellaria* sp. (C). Im eocaenen Kalk häufige Lithothamnienreste (L), Orthophragminen (O), Bryozoen (B), Operculina (Op), etc.

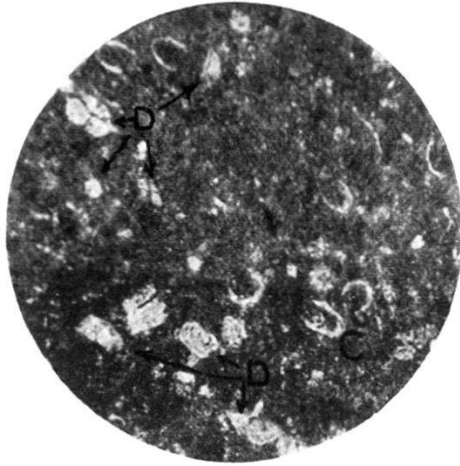


Fig. 1.  $\times 40$

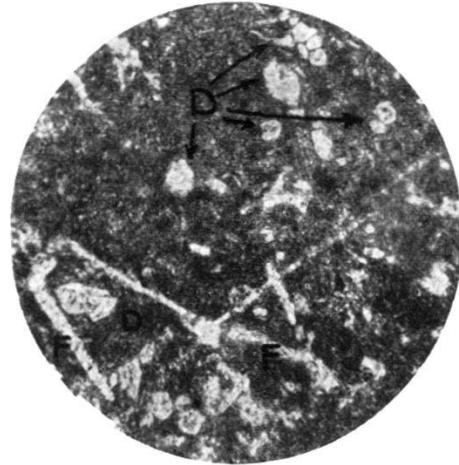


Fig. 2.  $\times 40$

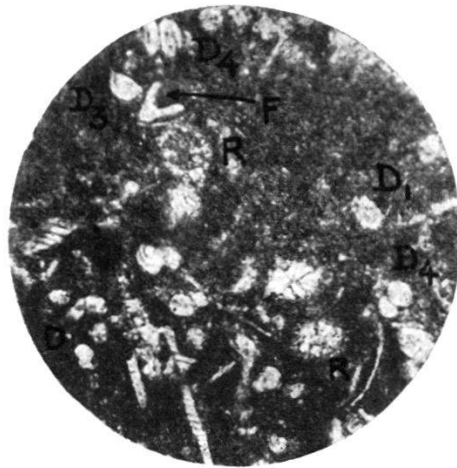


Fig. 3.  $\times 40$

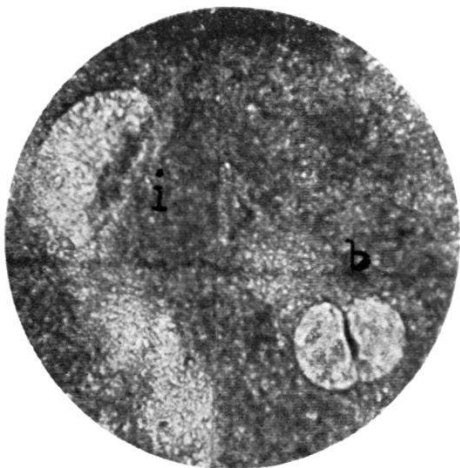


Fig. 4.  $\times 70$

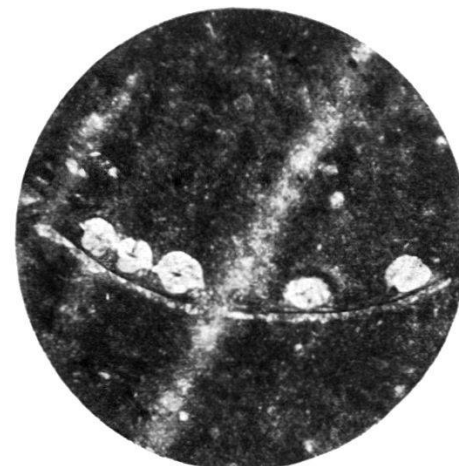
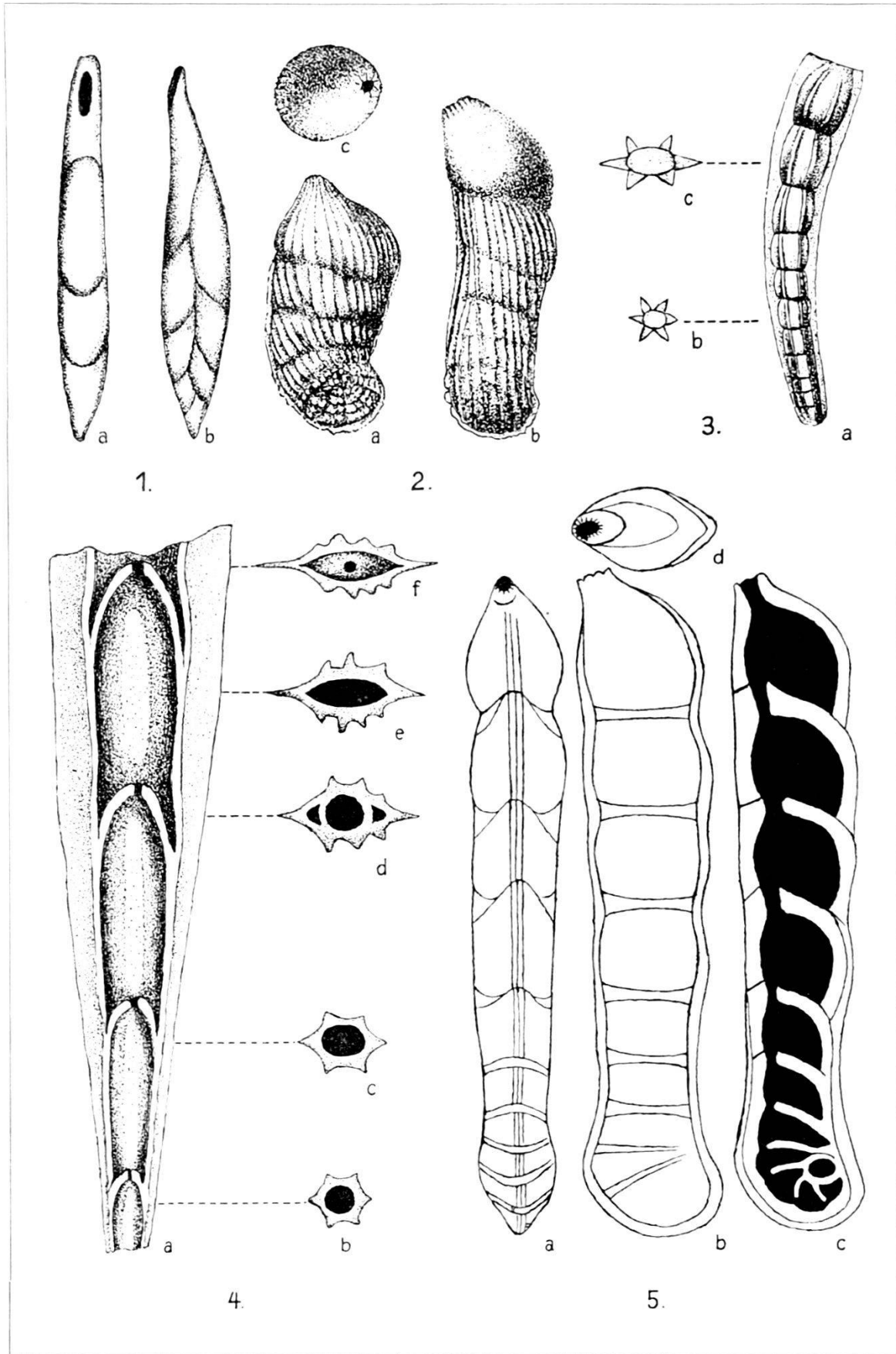
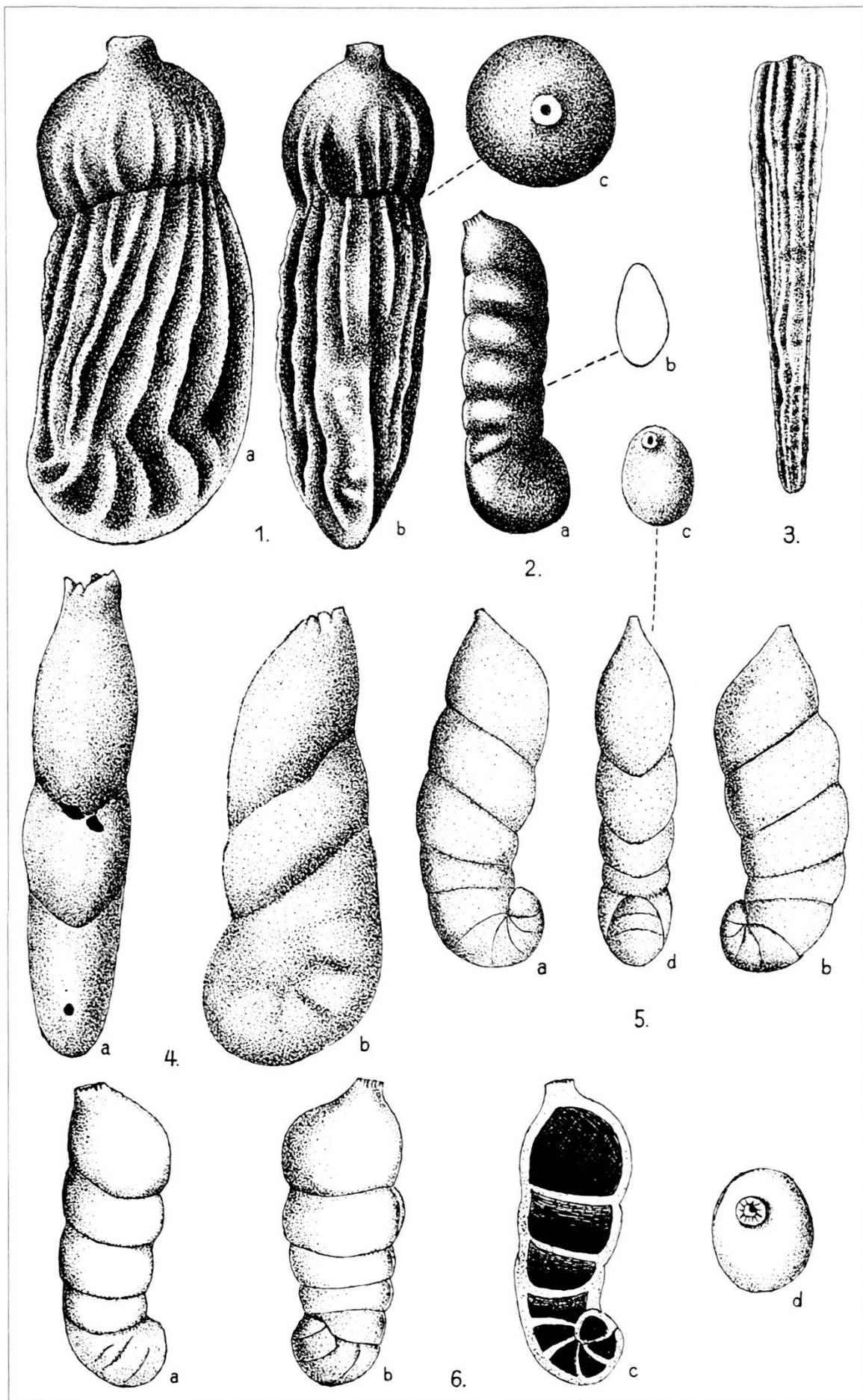
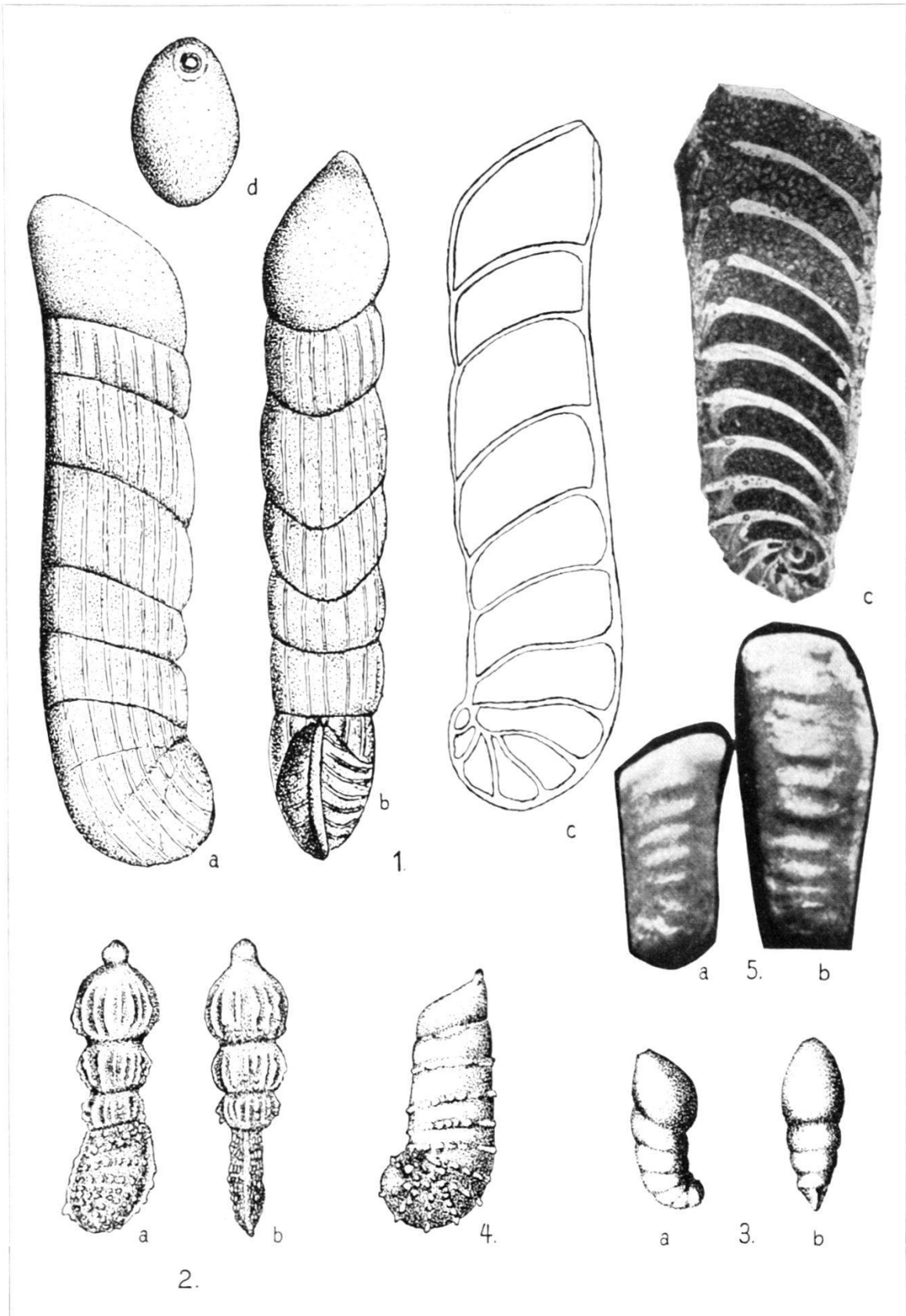


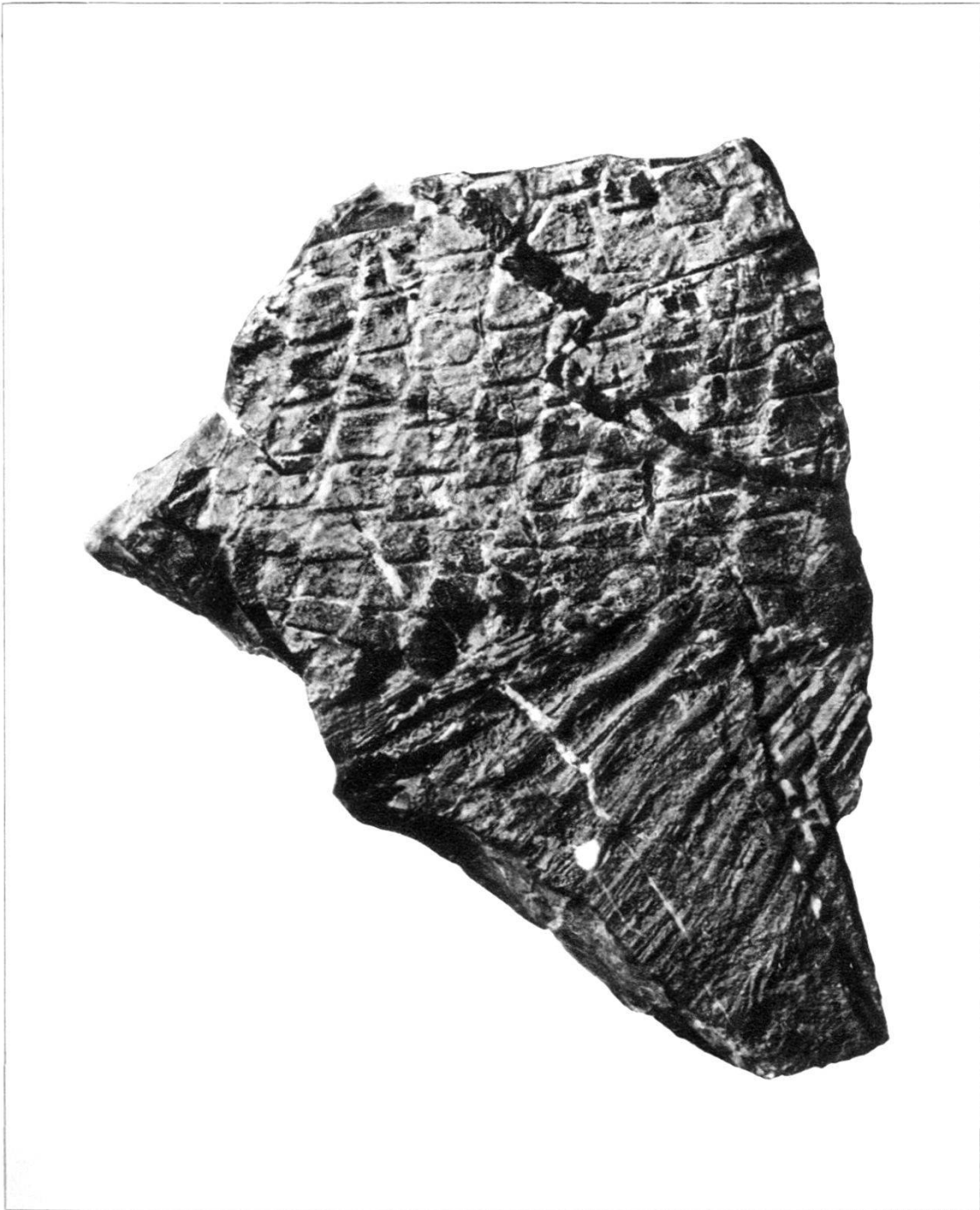
Fig. 5.  $\times 70$









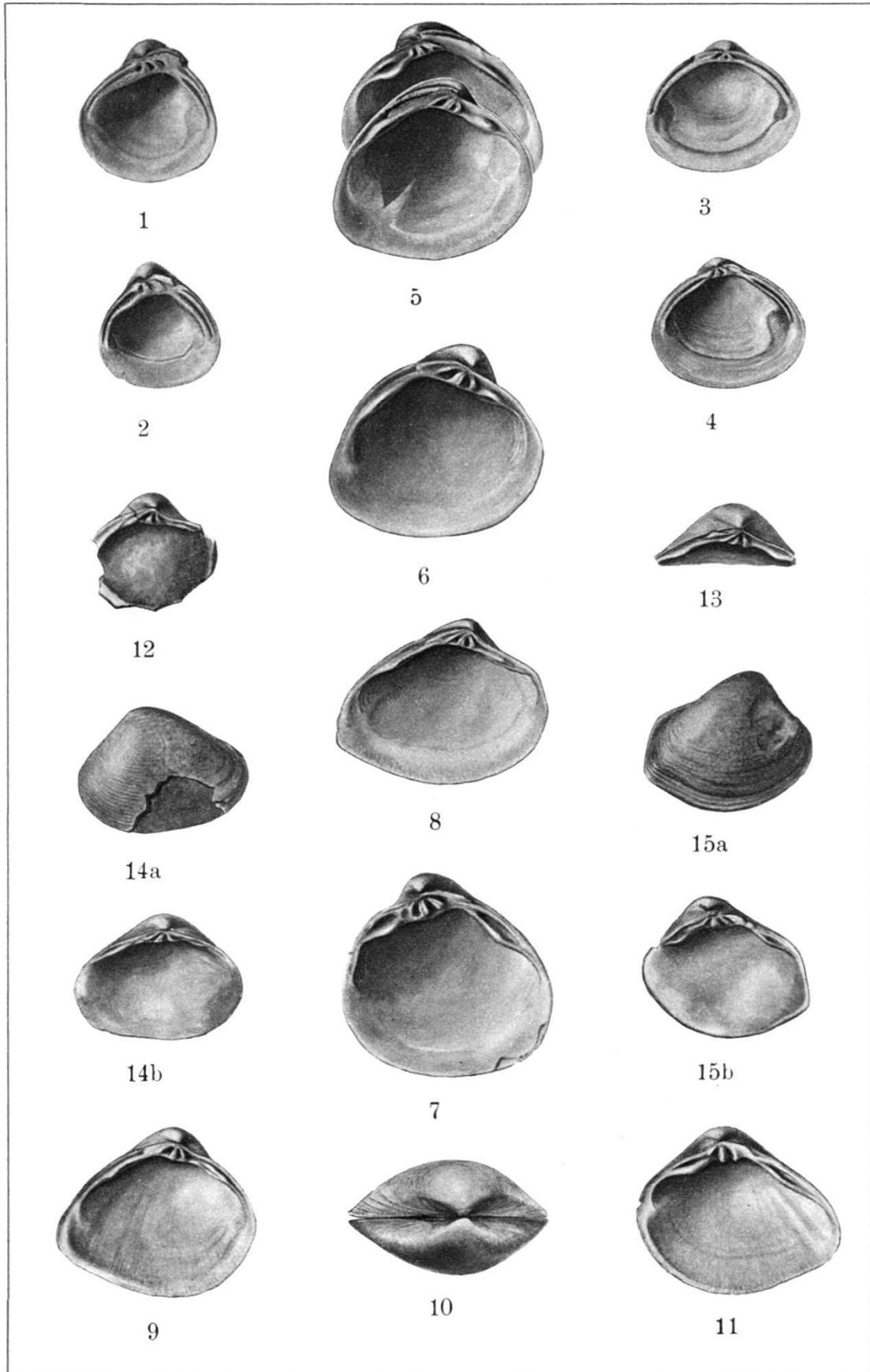


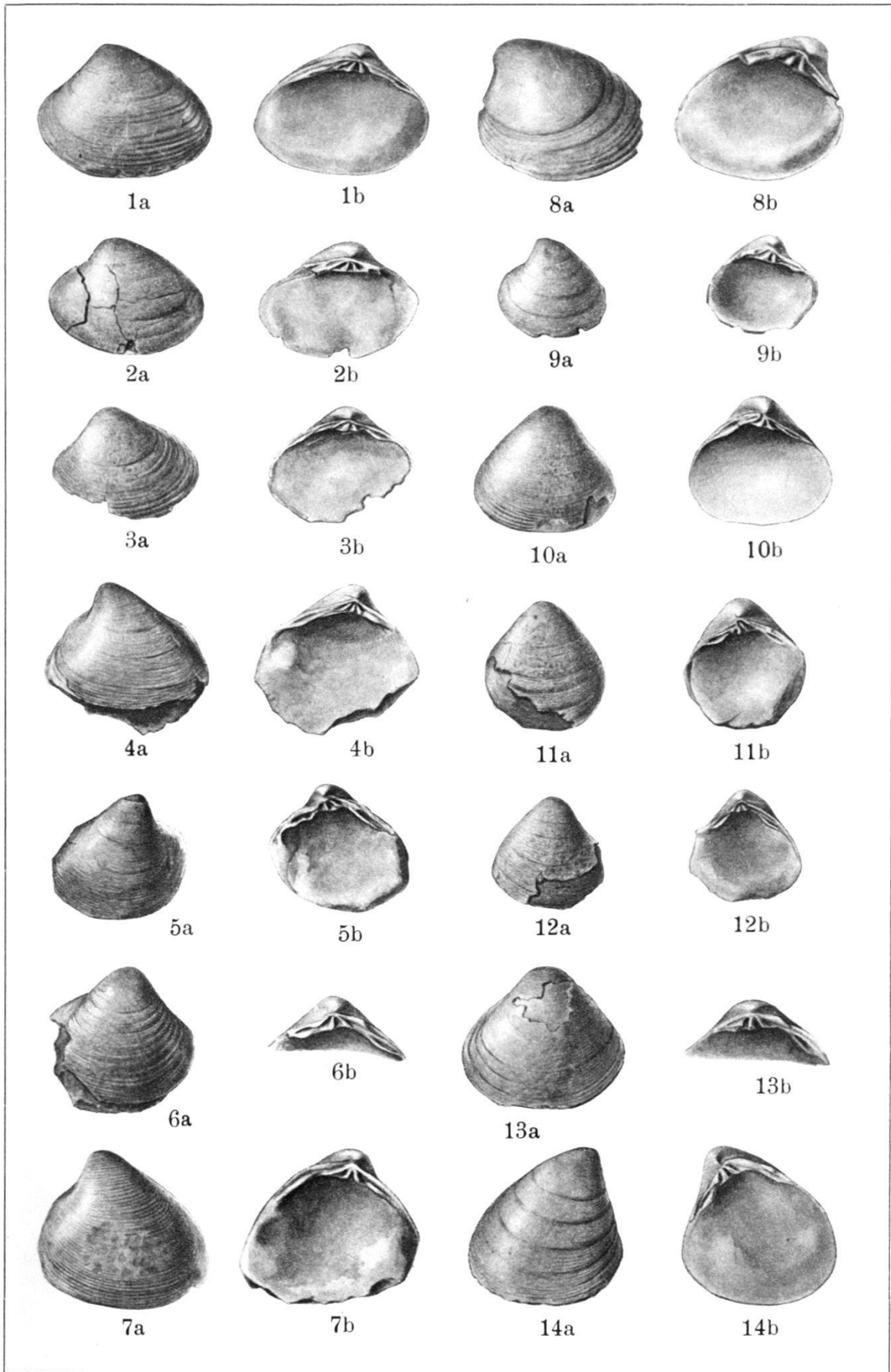
Repr. Birkhäuser, Basel.

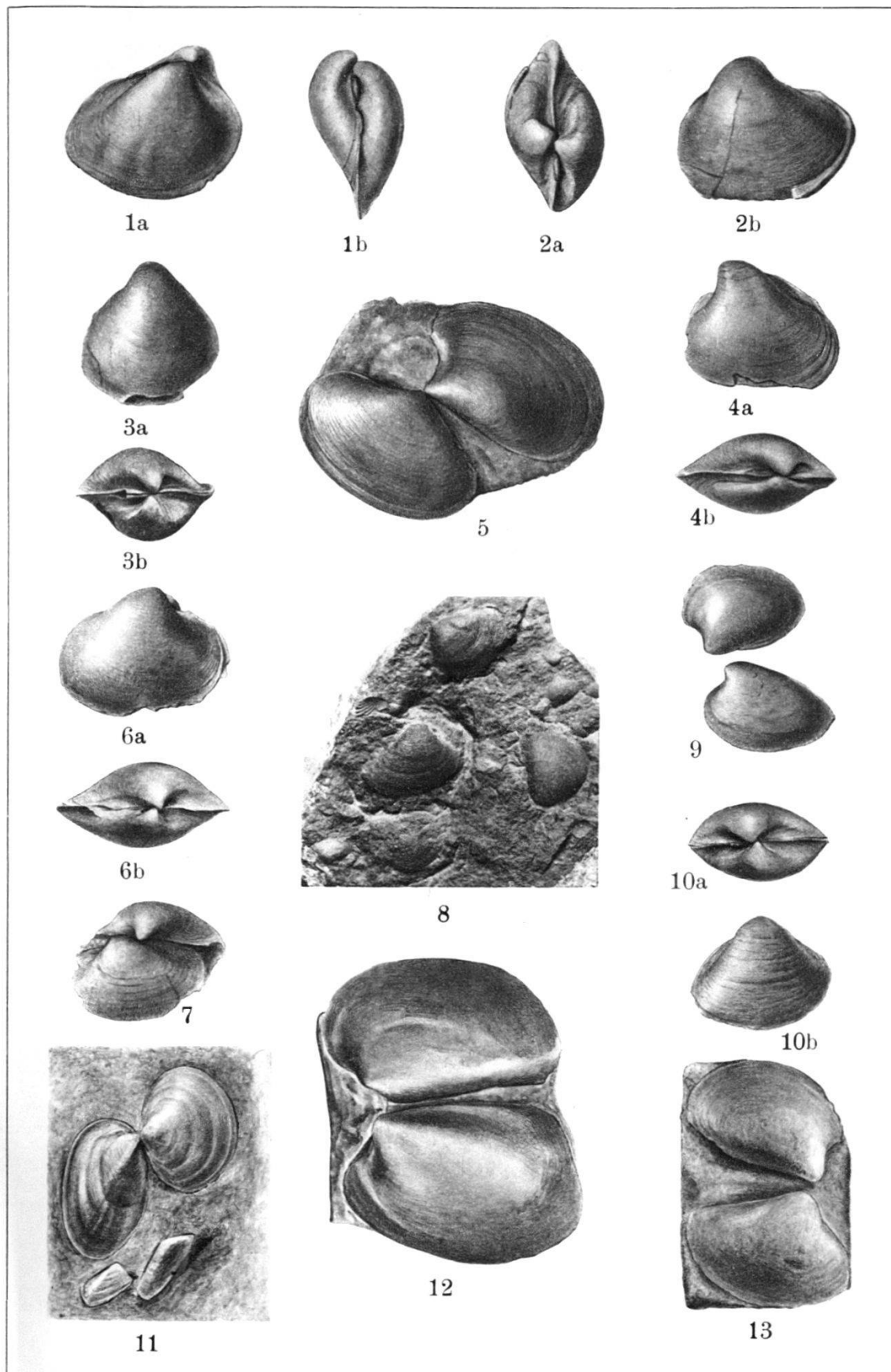
Cf. *Paralepidoides*.

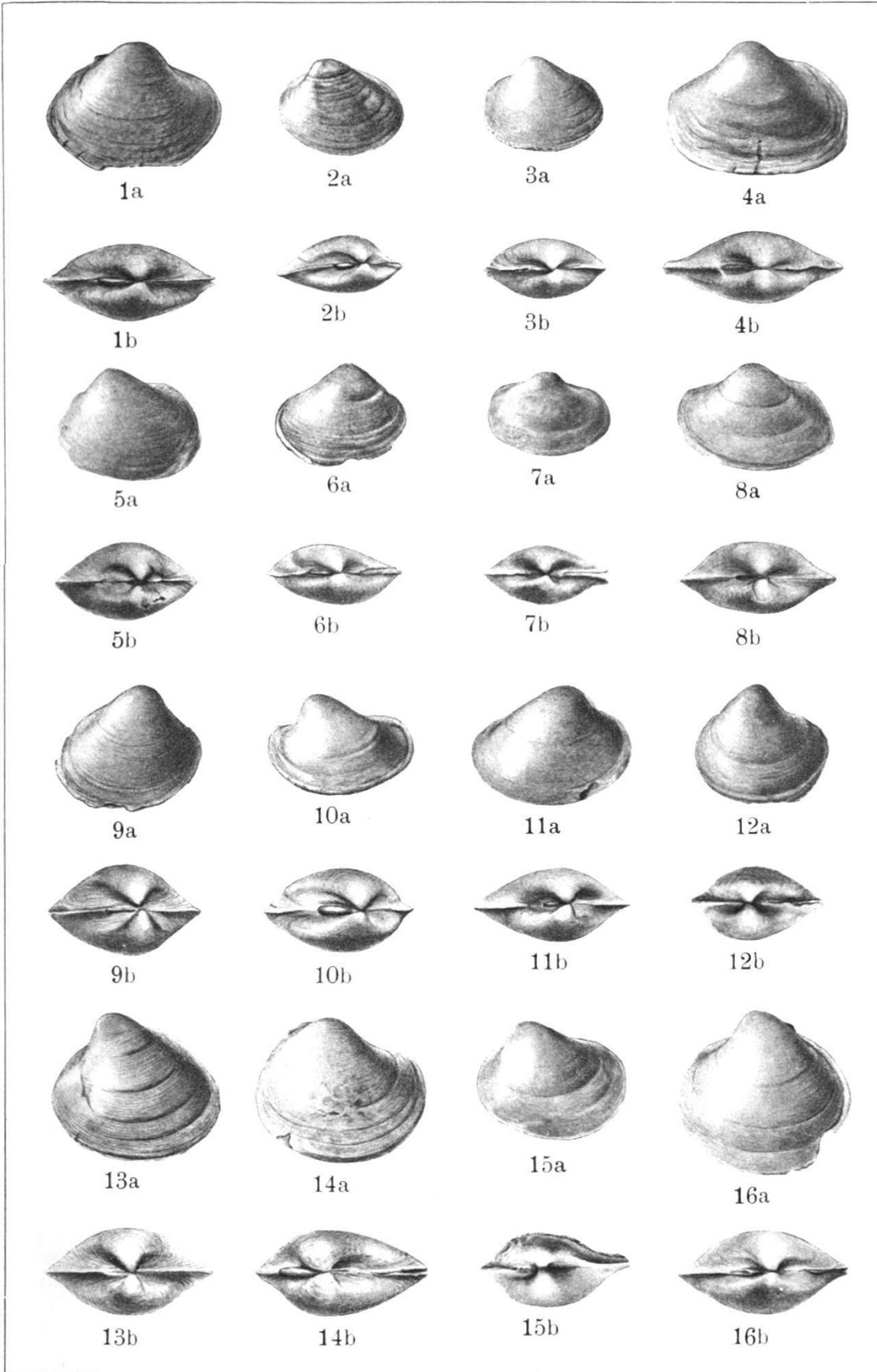
Schuppenpartie und Analflosse.

Val Sassa, Graubünden (Nationalpark). Oberste Trias, wahrscheinlich Rhät.  
Nat. Grösse. Im Bündner Naturhistorischen und Nationalpark-Museum.

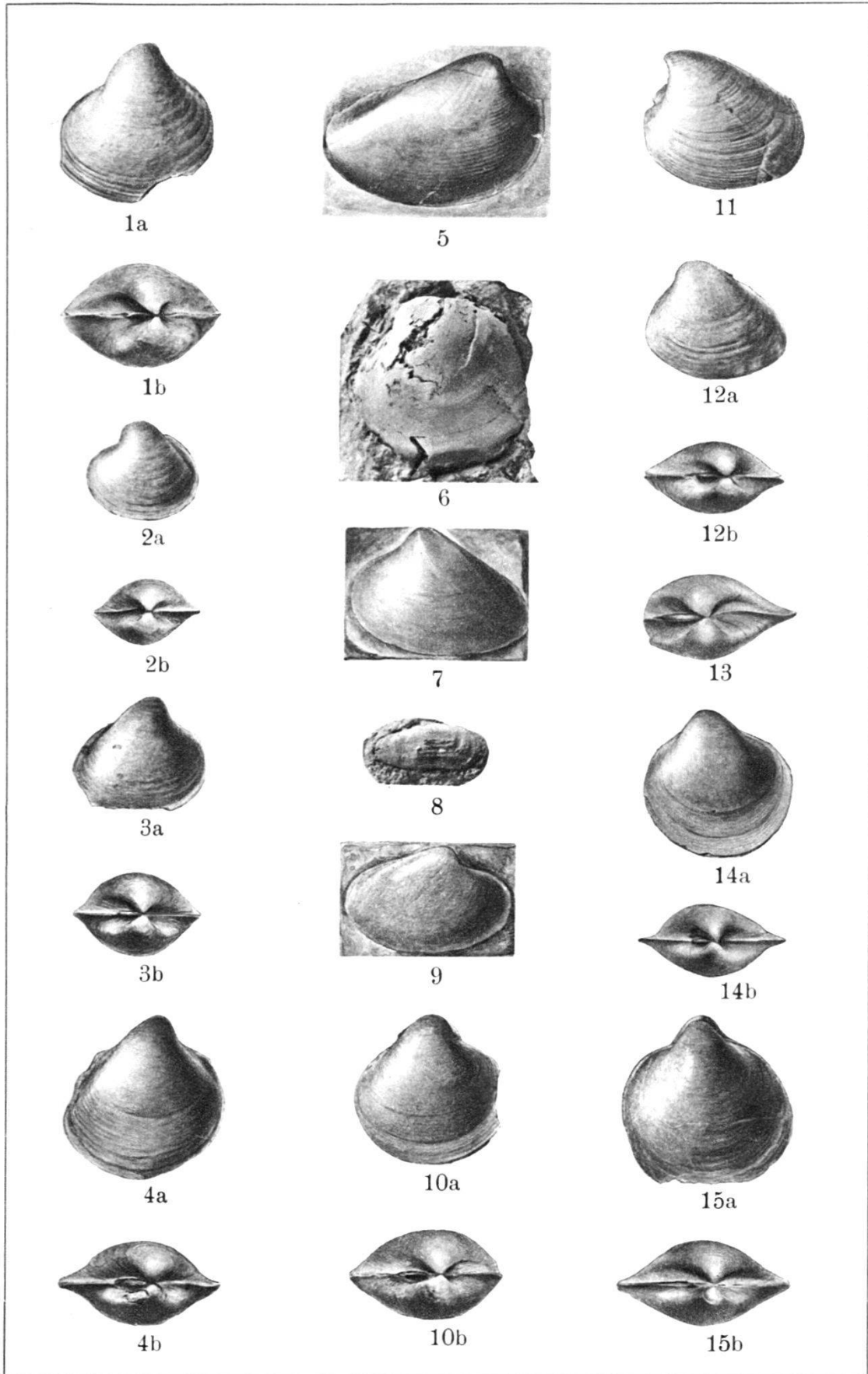












G. WINTER v. MÖLLENDORFF del., E. HUBER phot.

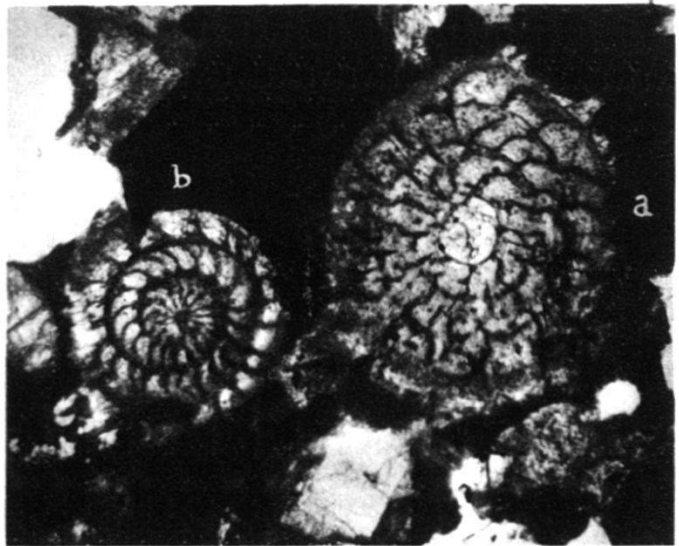
Repr. Birkhäuser, Basel.



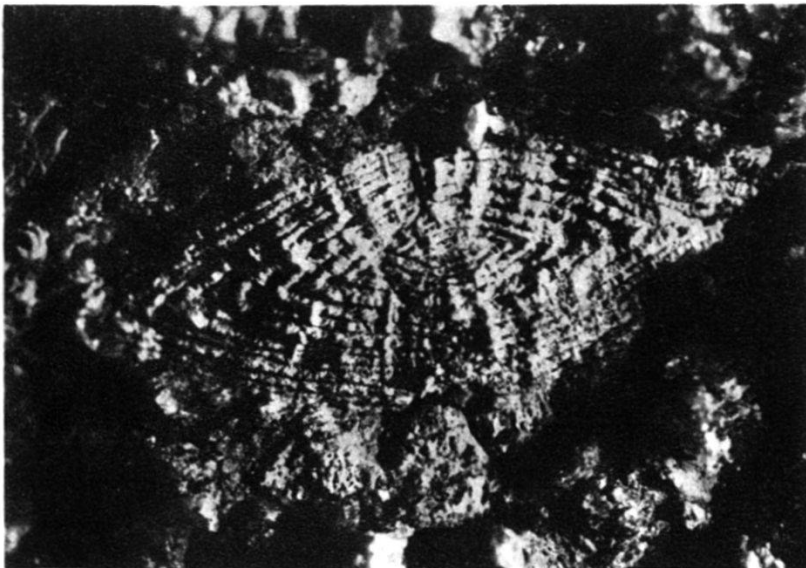
1



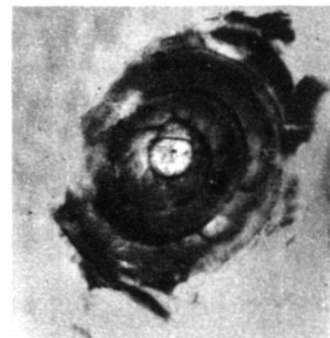
2



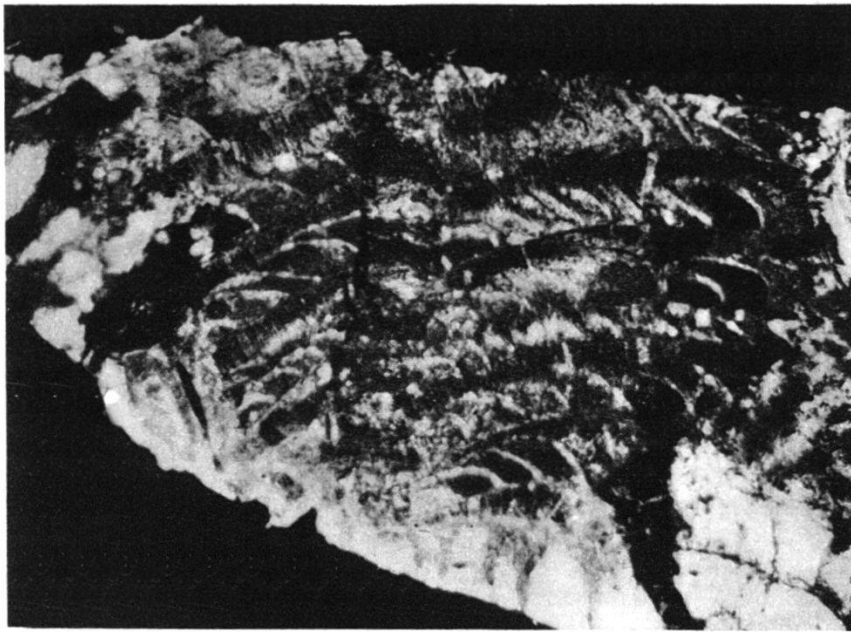
3



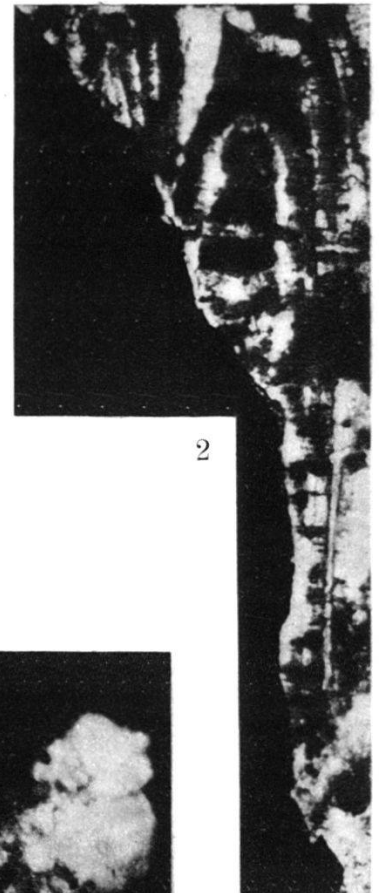
5



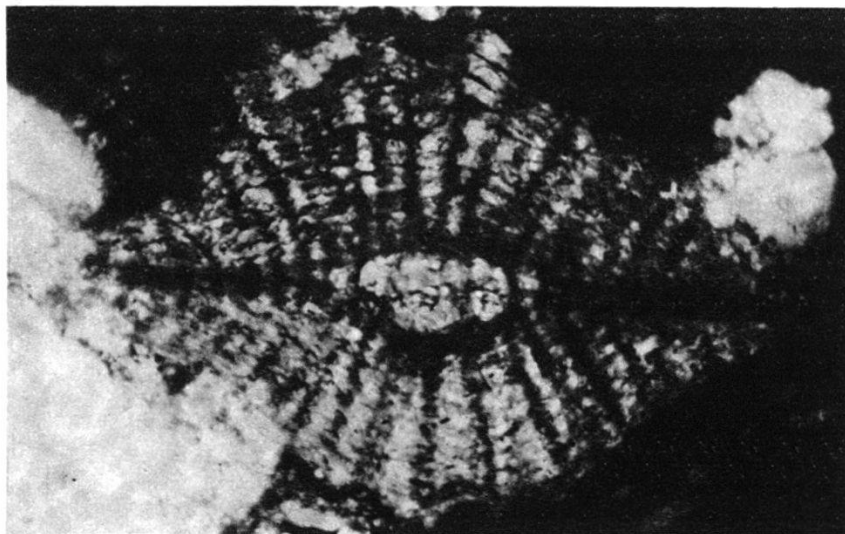
4



1



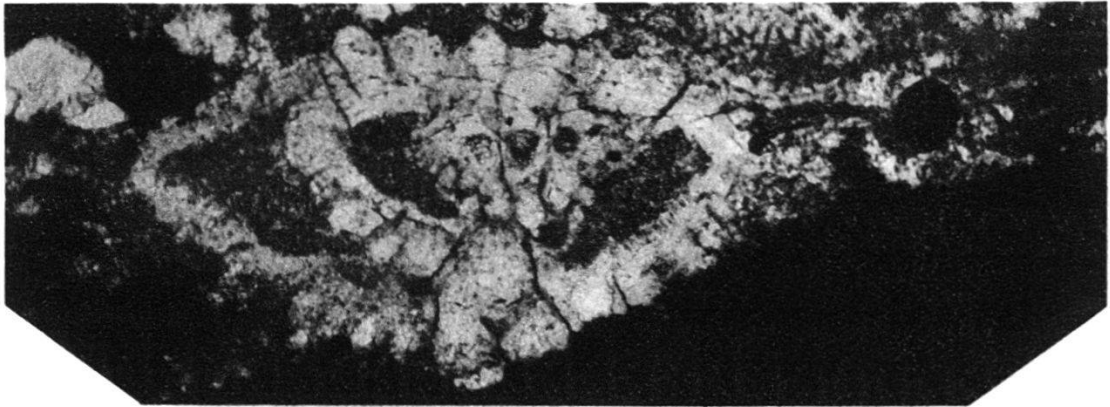
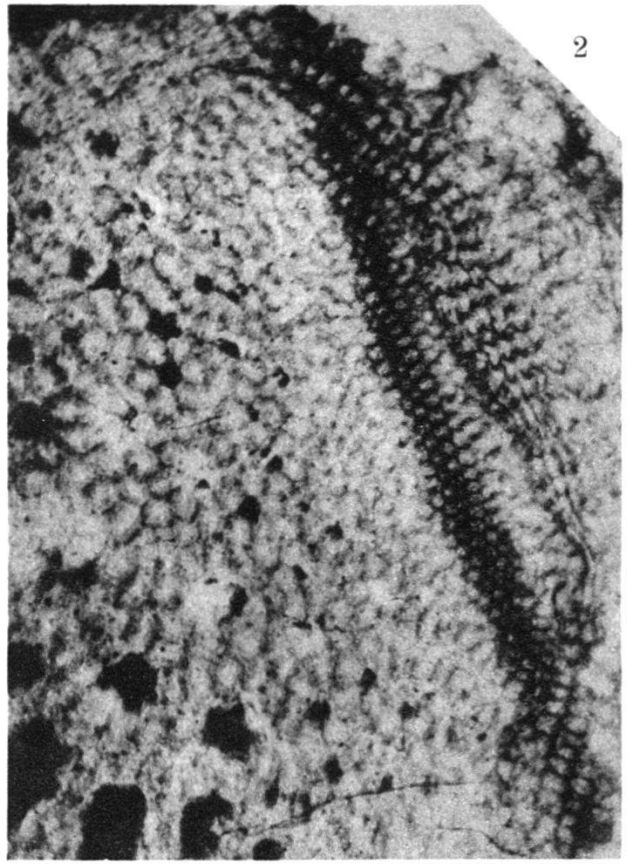
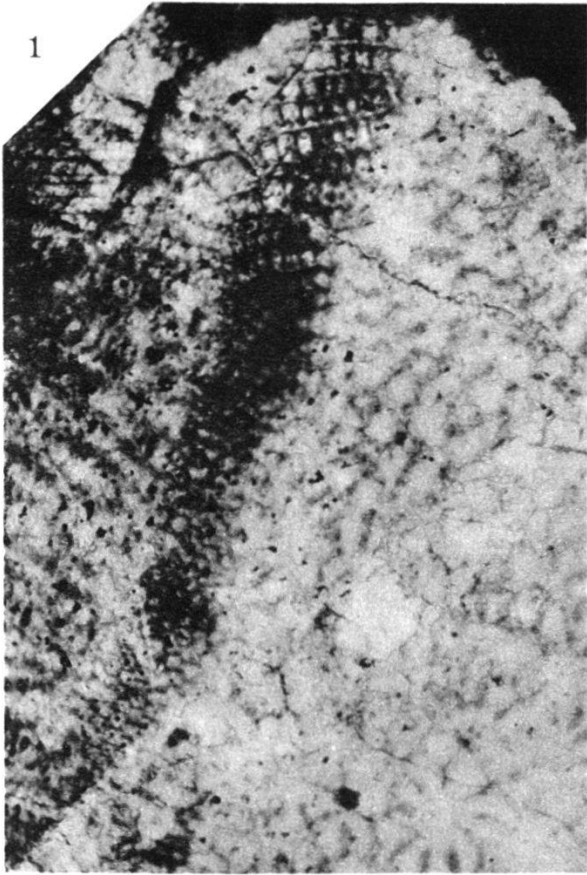
2

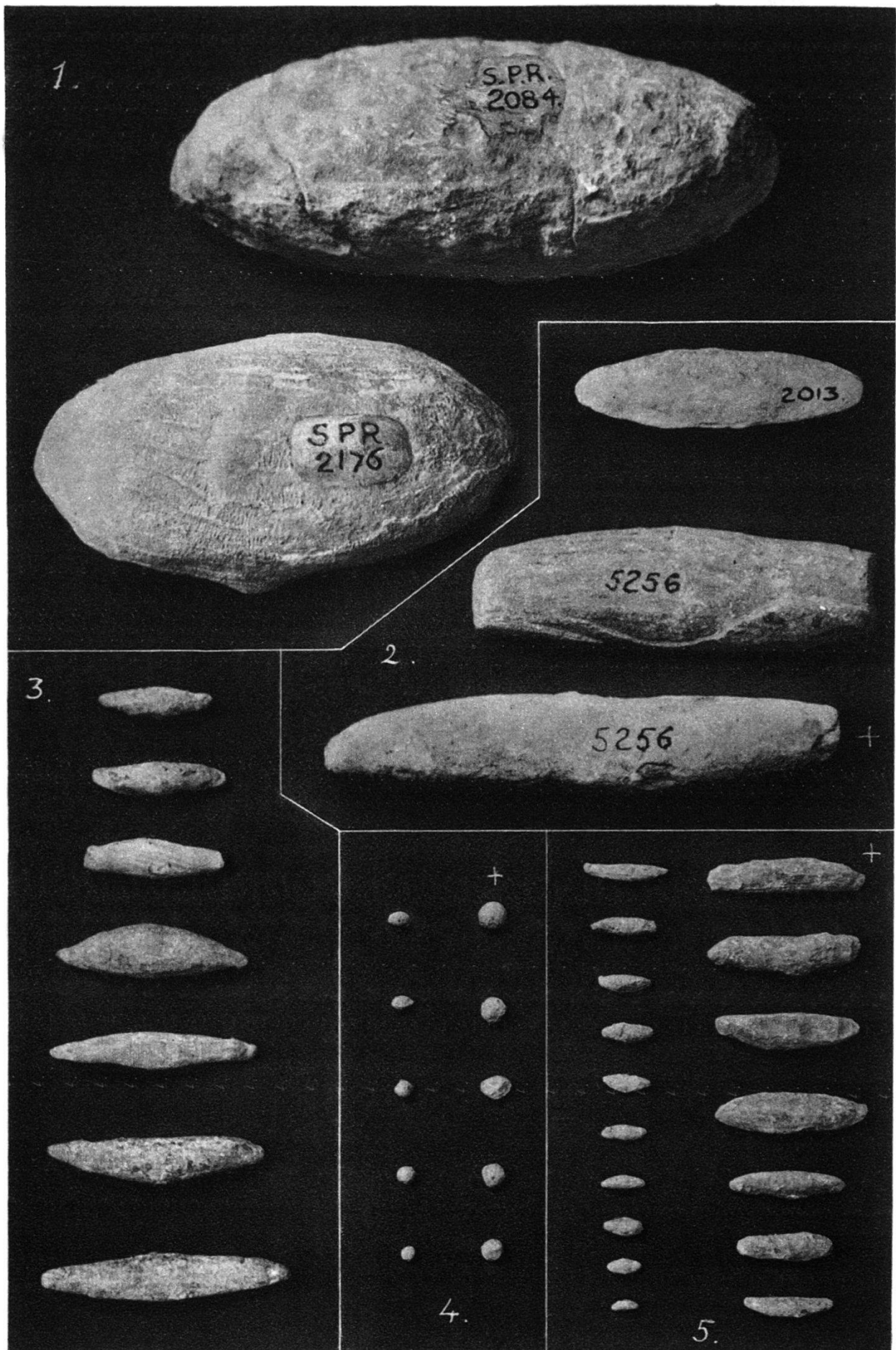


3



4

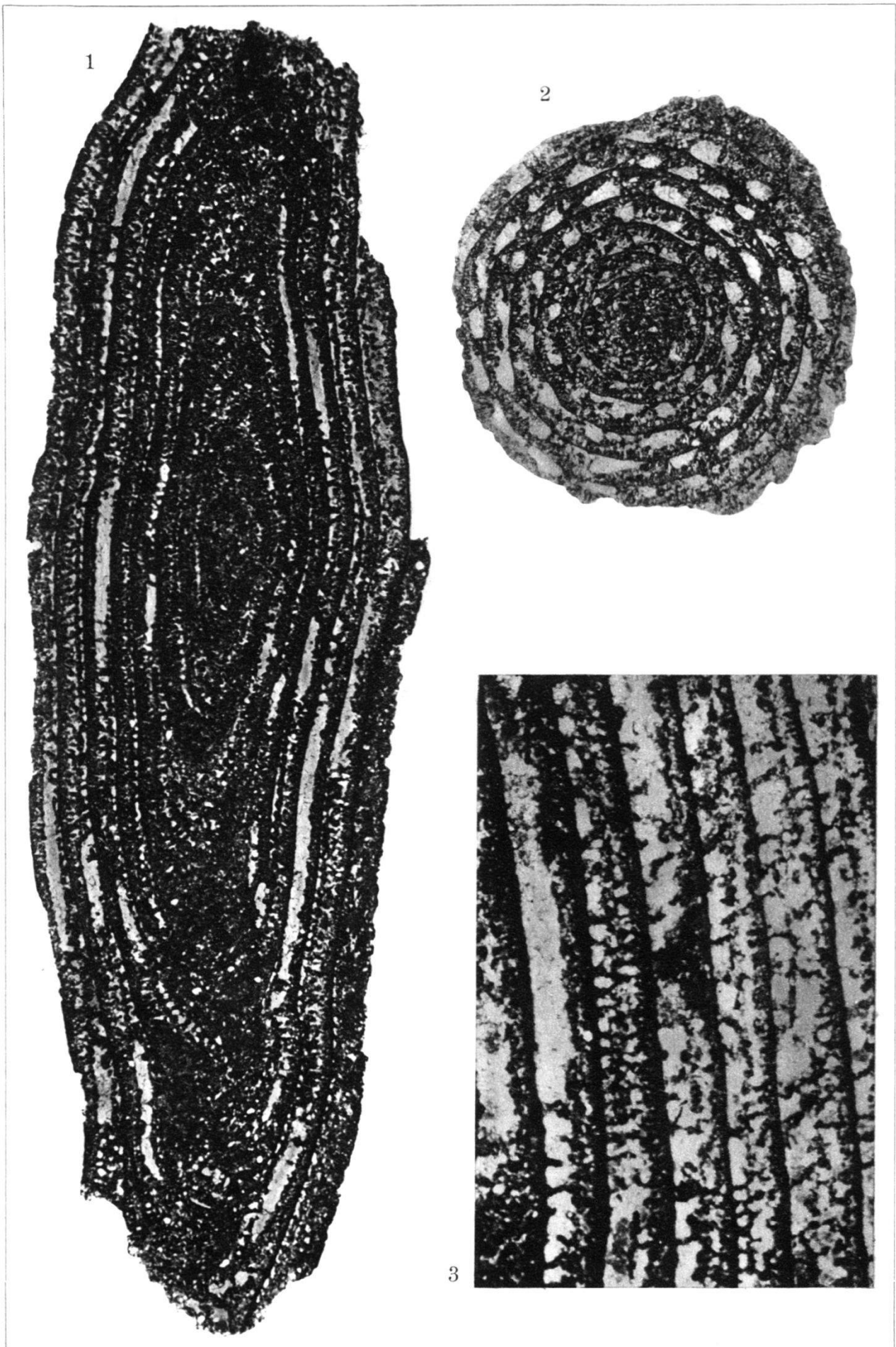




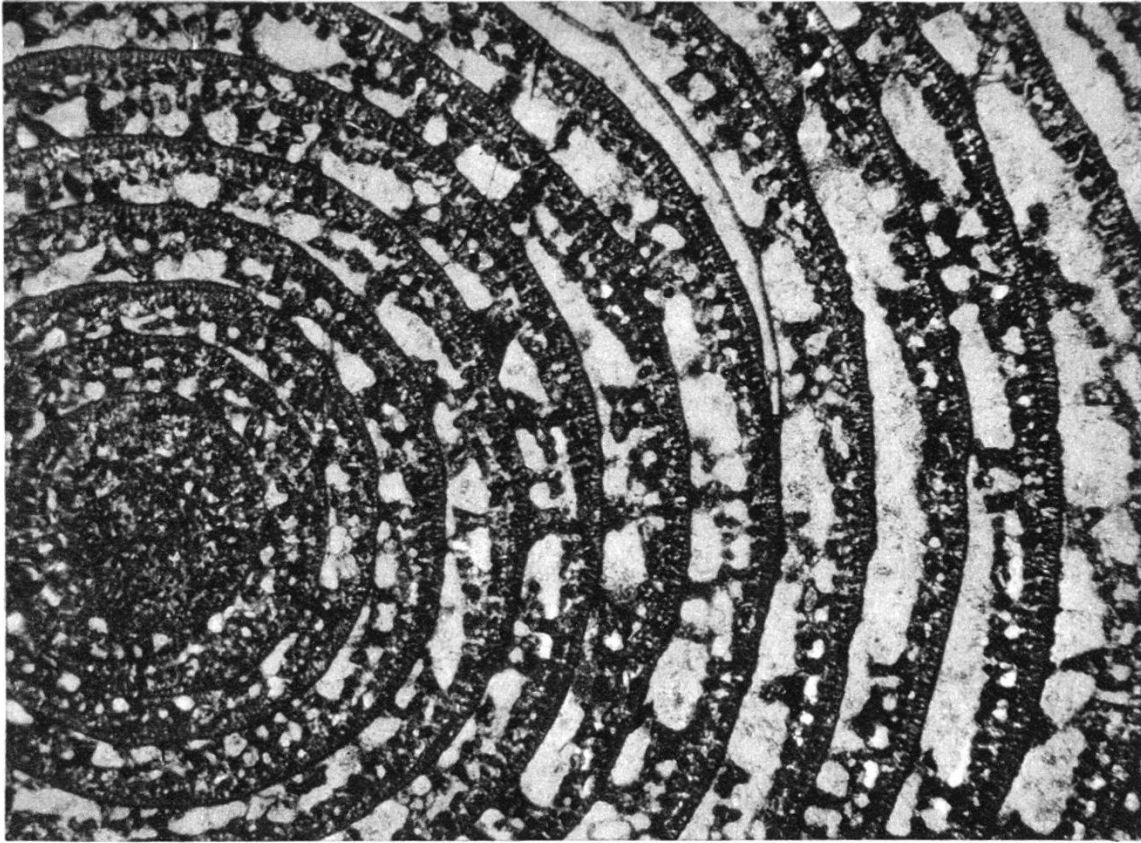
Exterior view, natural size.

- 1: *Loftusia persica* BRADY. 2: *L. elongata* n. sp. 3: *L. morgani* DOUVILLÉ.  
 4: *L. harrisoni* n. sp. 5: *L. minor* n. sp.

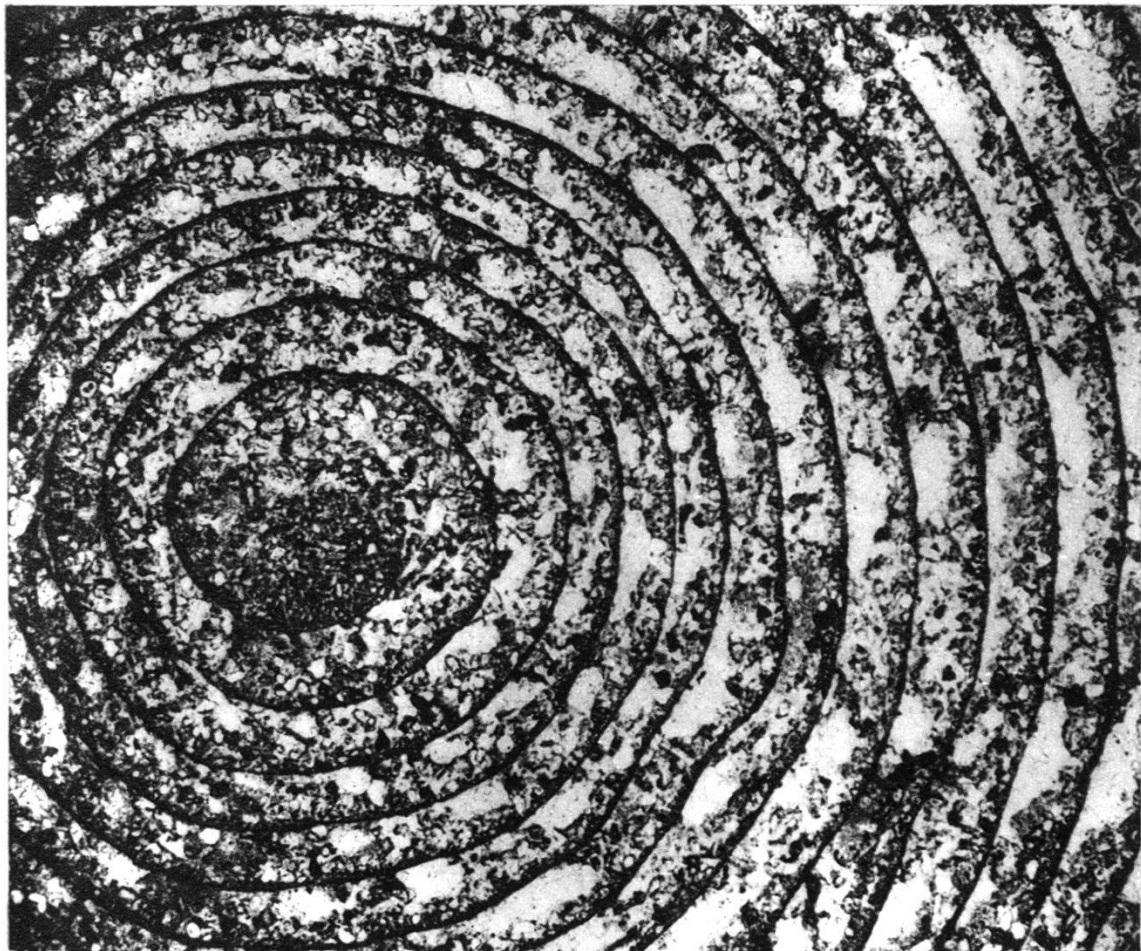
Explanation of plates in full see p. 449—450.



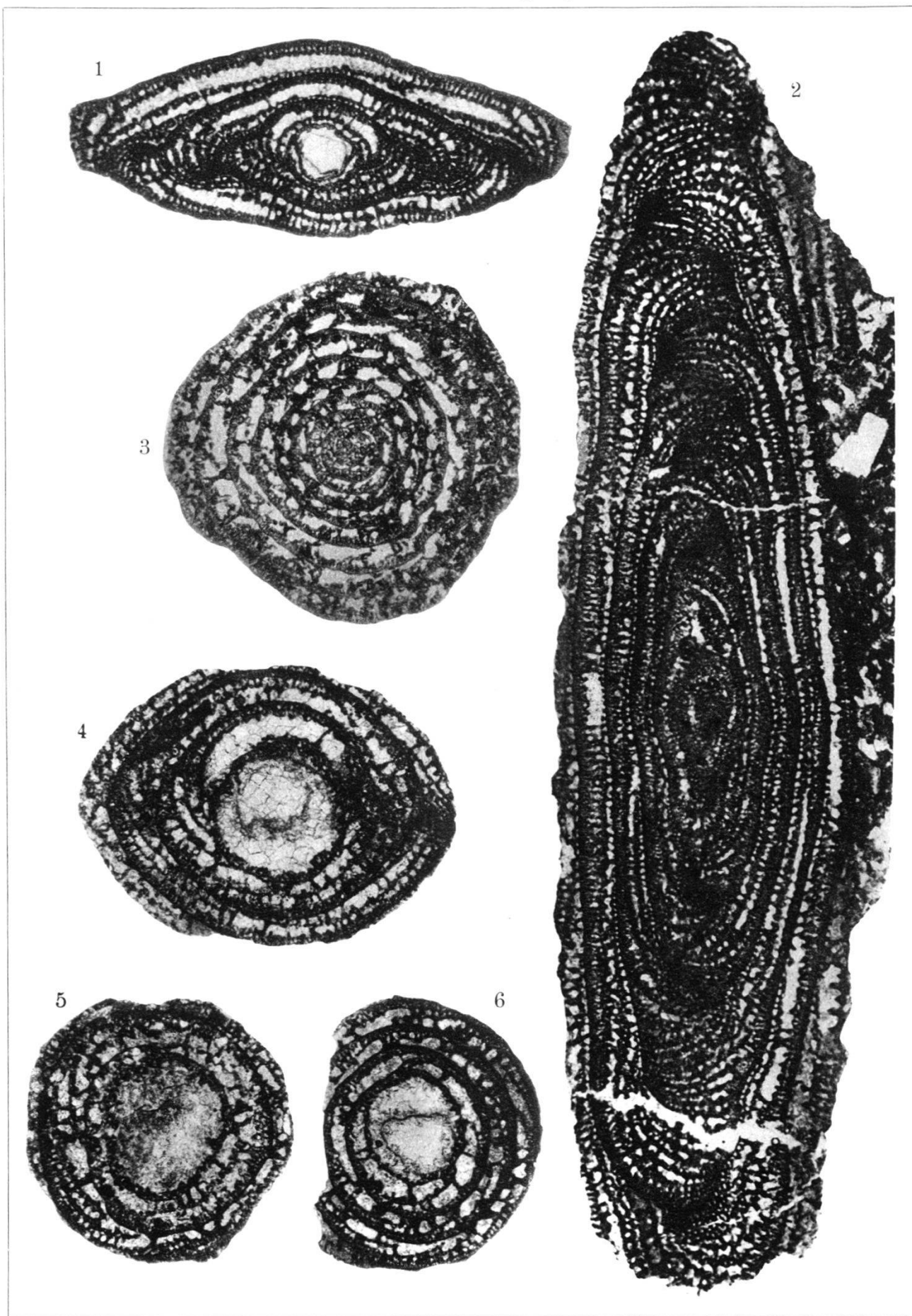
1 & 2: *Loftusia morgani* Douv. 3: *L. elongata* n. sp.



1: *Loftusia elongata* n. sp. Fine grained variety.

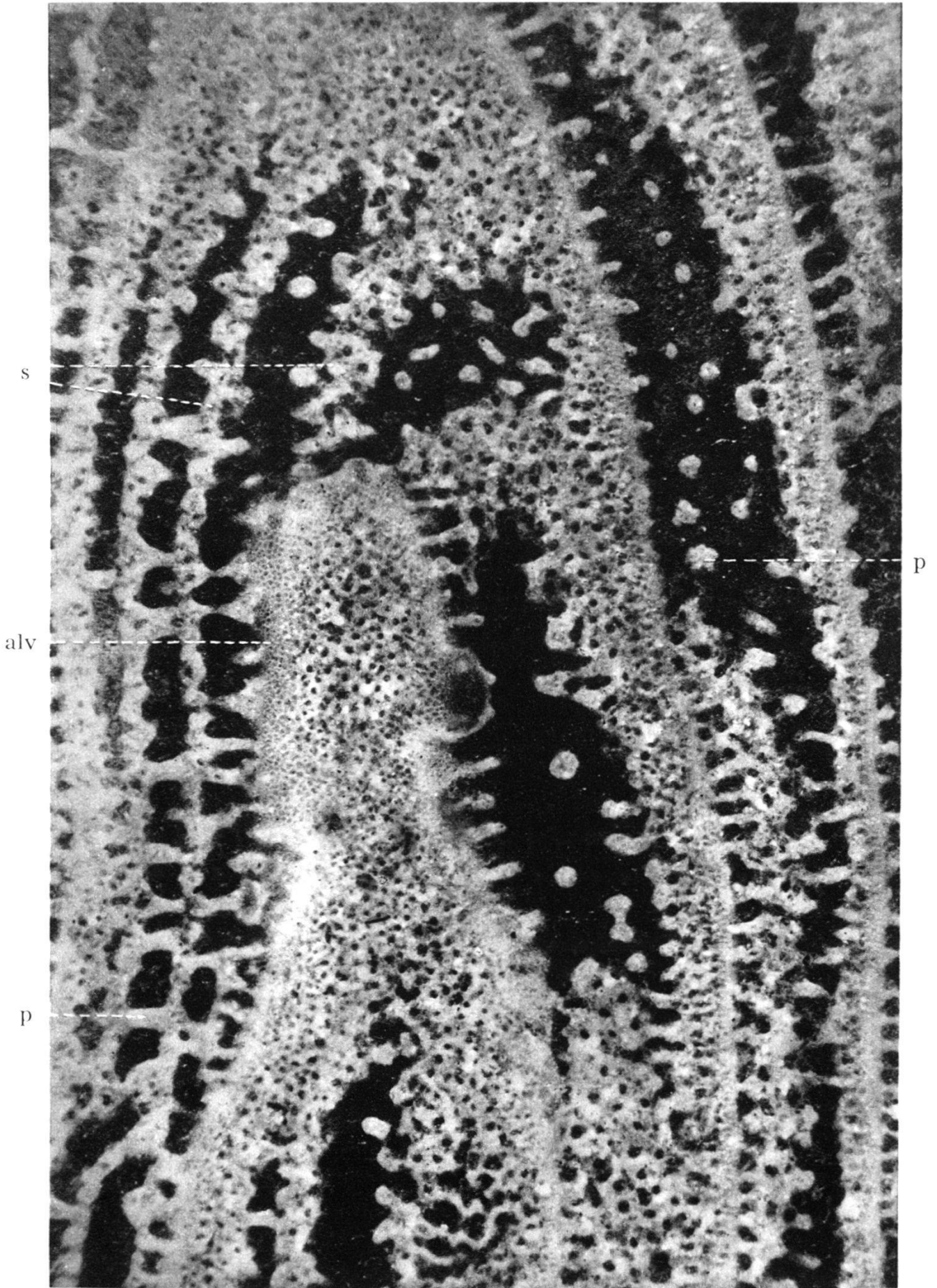


2. *Loftusia elongata* n. sp. Coarse grained variety.



1-3: *Loftusia minor* n. sp. 4-6: *Loftusia harrisoni* n. sp.





alv

Tangential section of *Loftusia elongata* n. sp.  
in reflected light, on black back ground.  $\times 32$ .

alv = alveolar layer of the spiral wall; p = pillars; s = septum with apertures.

M. REICHEL phot.

Repr. Birkhäuser, Basel.