

Zeitschrift: Eclogae Geologicae Helvetiae
Herausgeber: Schweizerische Geologische Gesellschaft
Band: 33 (1940)

Anhang: Tafeln
Autor: [s.n.]

Nutzungsbedingungen

Die ETH-Bibliothek ist die Anbieterin der digitalisierten Zeitschriften. Sie besitzt keine Urheberrechte an den Zeitschriften und ist nicht verantwortlich für deren Inhalte. Die Rechte liegen in der Regel bei den Herausgebern beziehungsweise den externen Rechteinhabern. [Siehe Rechtliche Hinweise.](#)

Conditions d'utilisation

L'ETH Library est le fournisseur des revues numérisées. Elle ne détient aucun droit d'auteur sur les revues et n'est pas responsable de leur contenu. En règle générale, les droits sont détenus par les éditeurs ou les détenteurs de droits externes. [Voir Informations légales.](#)

Terms of use

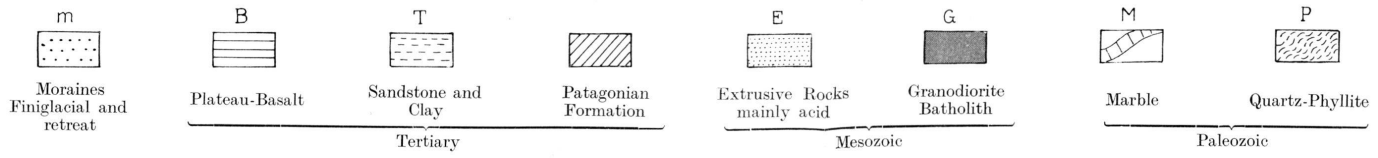
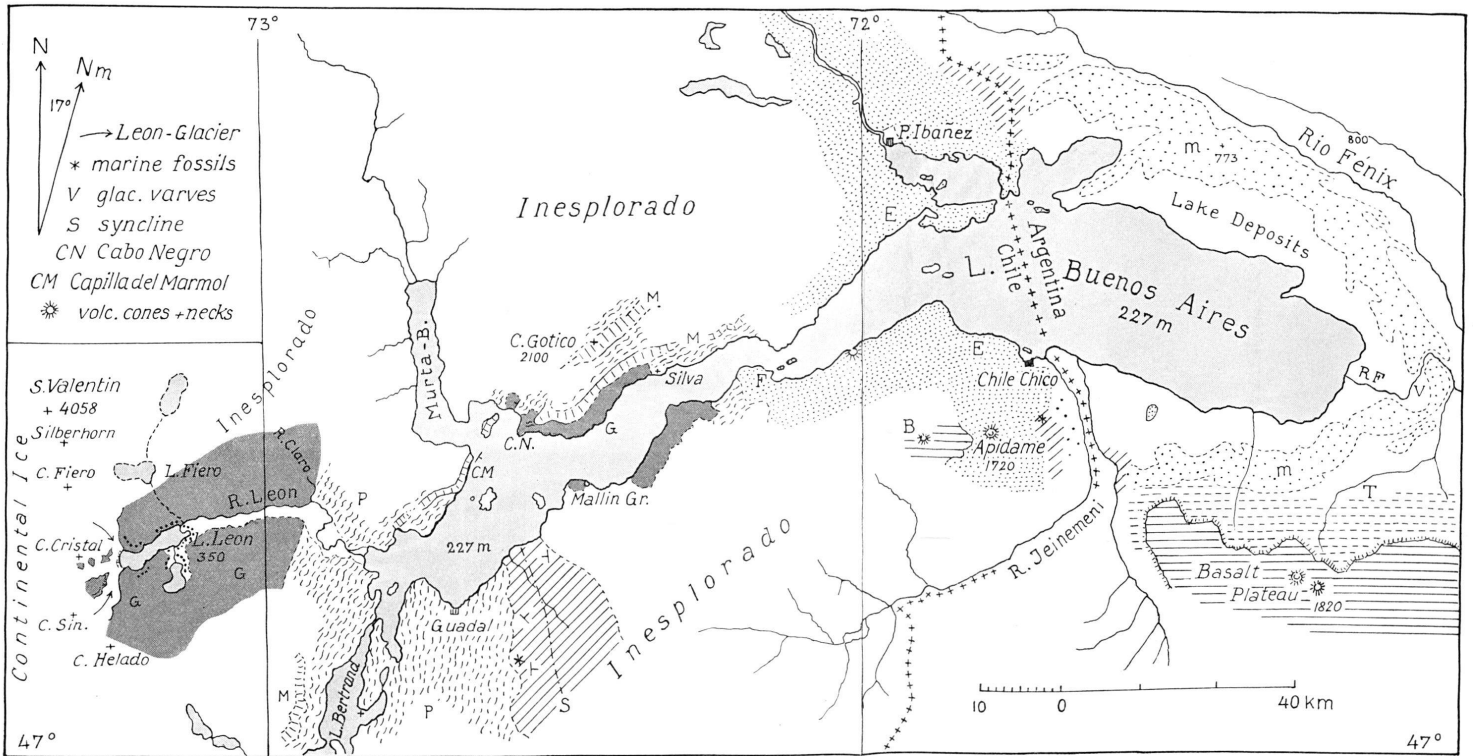
The ETH Library is the provider of the digitised journals. It does not own any copyrights to the journals and is not responsible for their content. The rights usually lie with the publishers or the external rights holders. [See Legal notice.](#)

Download PDF: 14.03.2025

ETH-Bibliothek Zürich, E-Periodica, <https://www.e-periodica.ch>

Geological Sketch-Map of Lago Buenos Aires, Patagonia

(Eastern extremity after C. Caldenius)





1



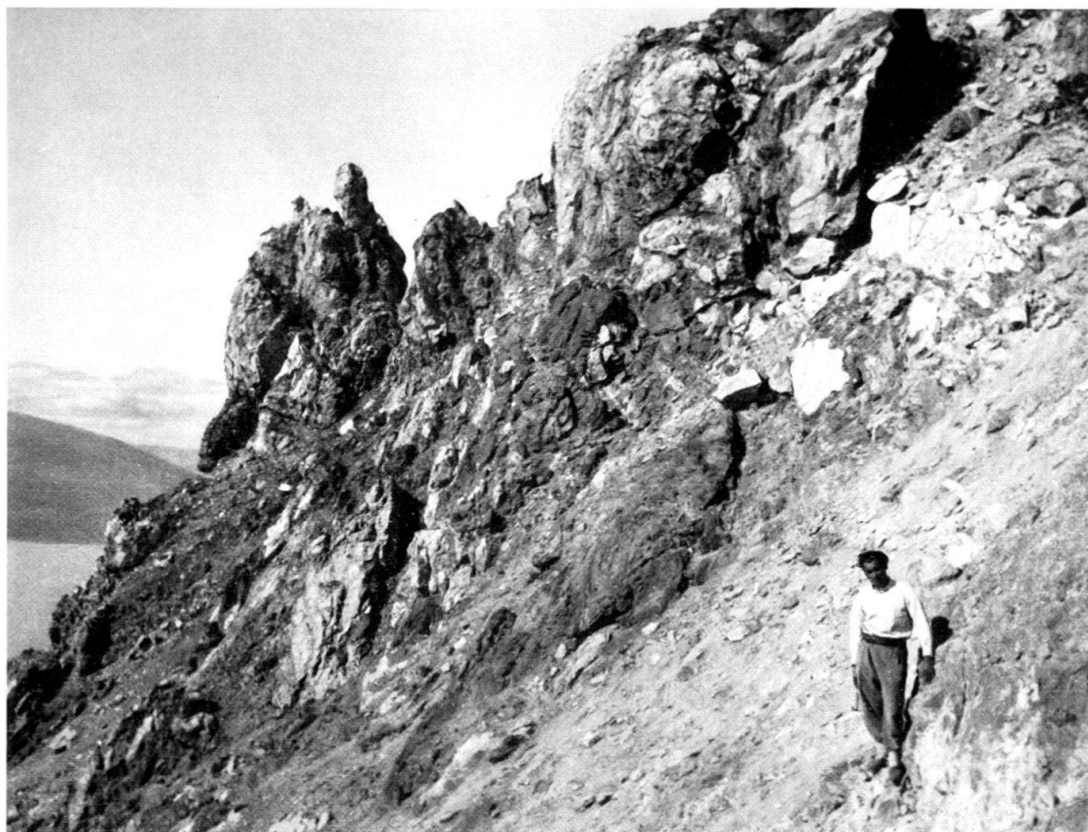
2



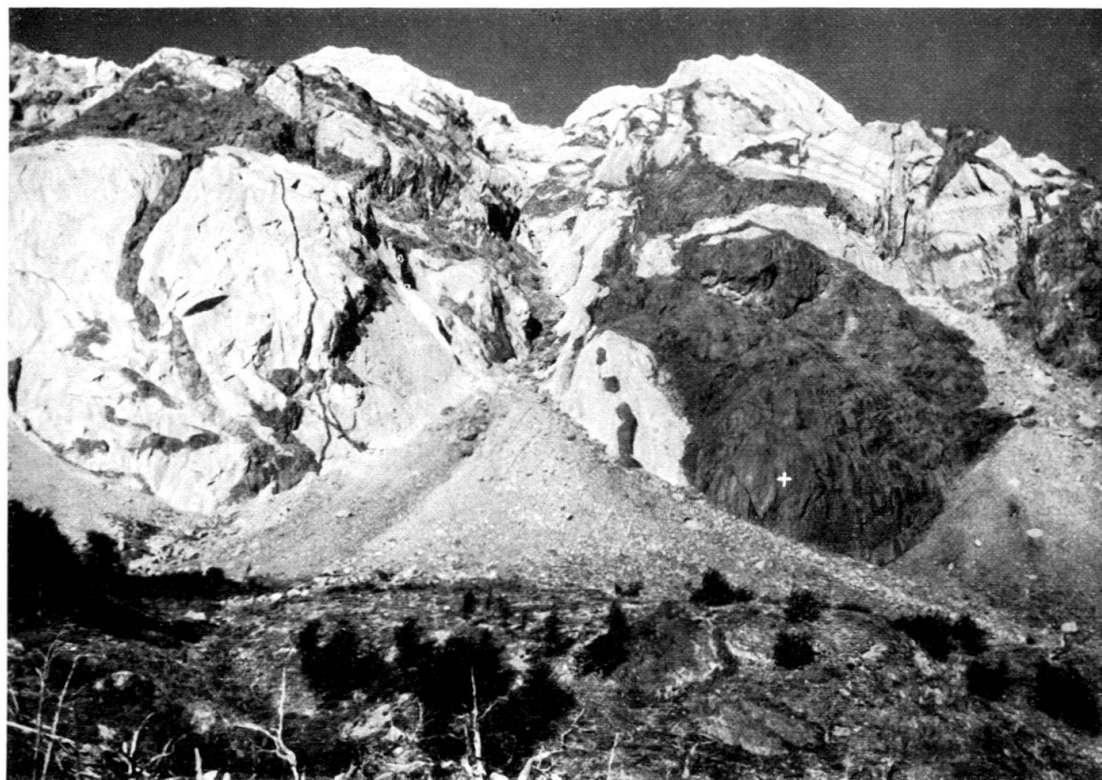
1



2



1



2



1



2



1



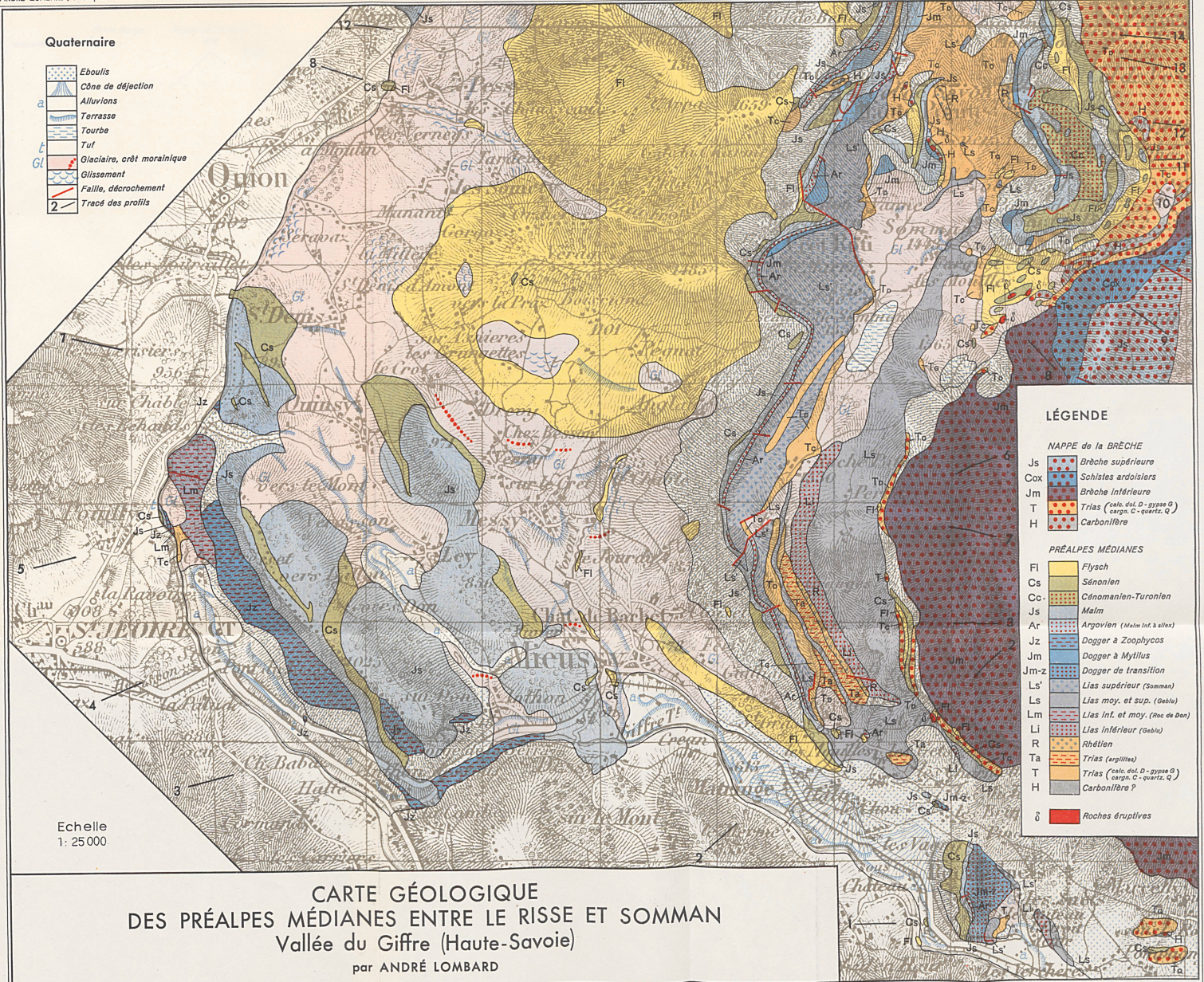
2



1



2

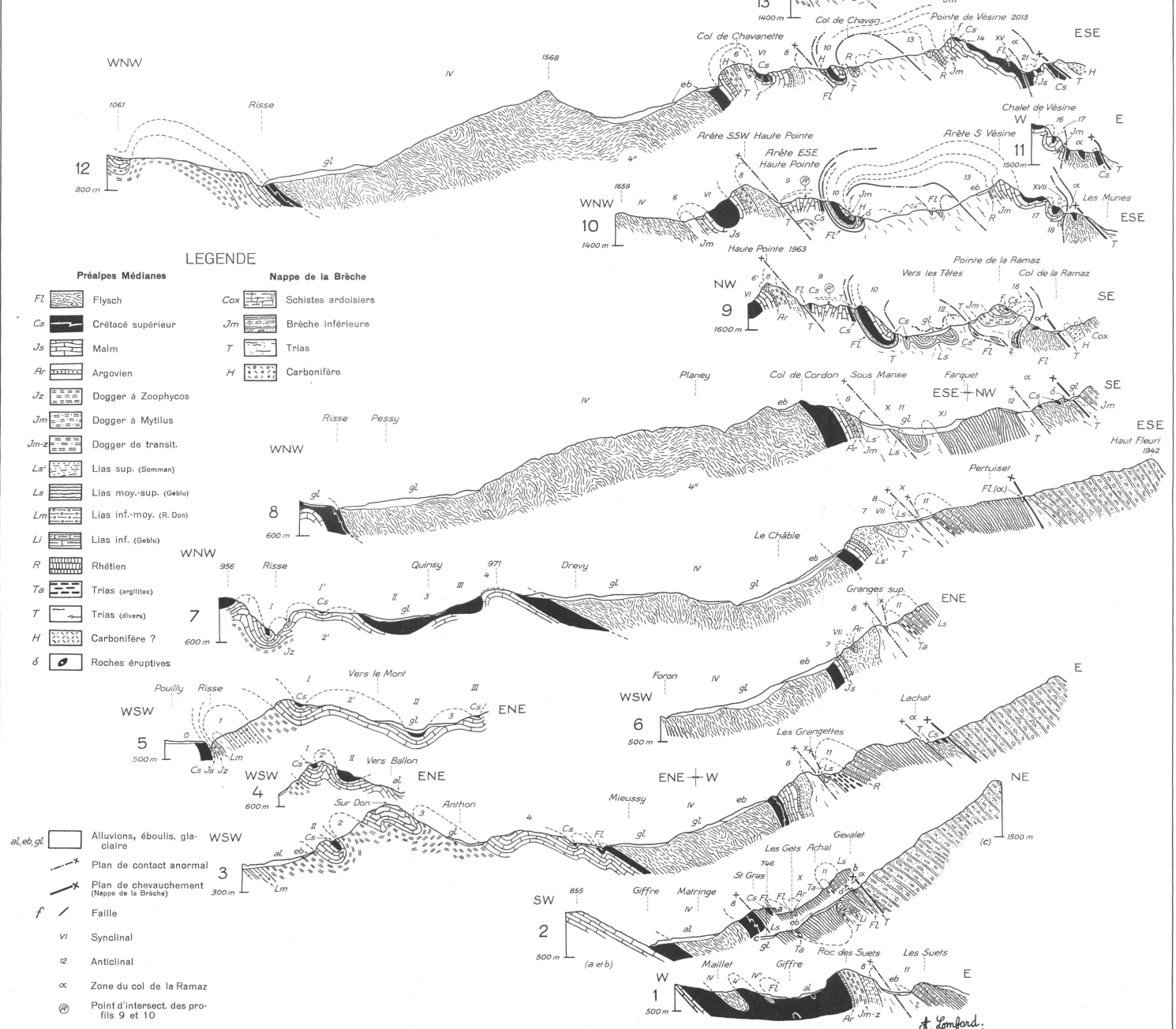


PROFILS GEOLOGIQUES DES PREALPES MEDIANNES ENTRE LE RISSE ET SOMMAN

VALLÉE DU GIFFRE (HAUTE SAVOIE)

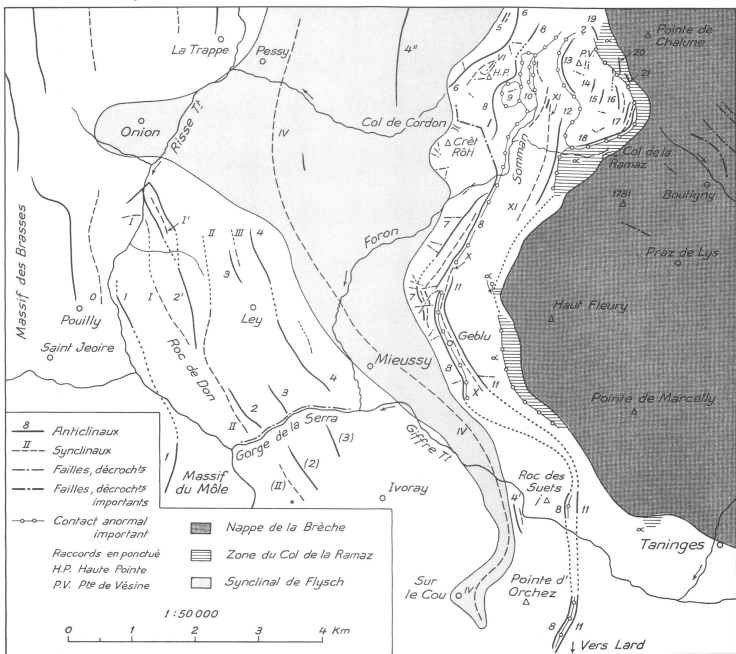
par ANDRÉ LOMBARD

1:25 000



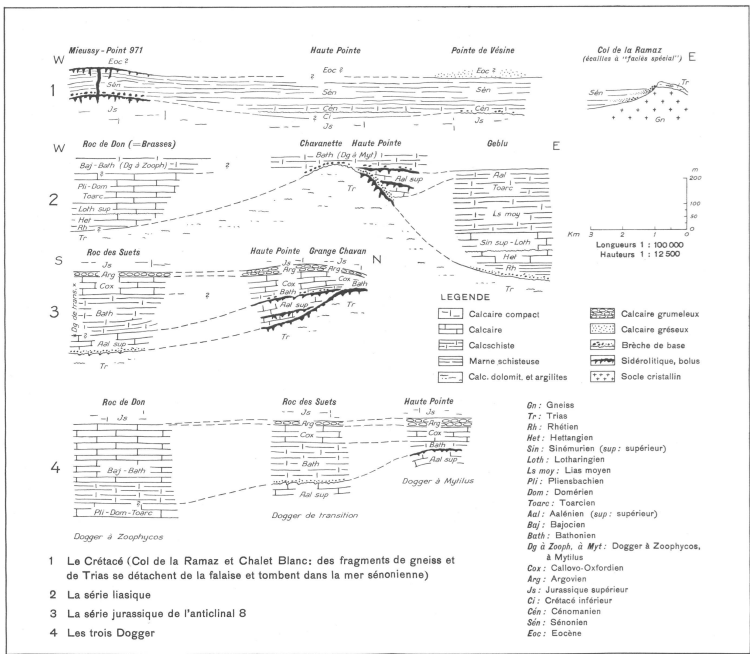
Autorisé officiellement le 20 VIII 1940
conformément à l'ACF du 3 X 1939.

WASSERMANN A.G. BASEL



Autorisé officiellement le 29 VIII 1940
conformément à l'ACF du 3 X 1939.

Fig. 1. CARTE TECTONIQUE



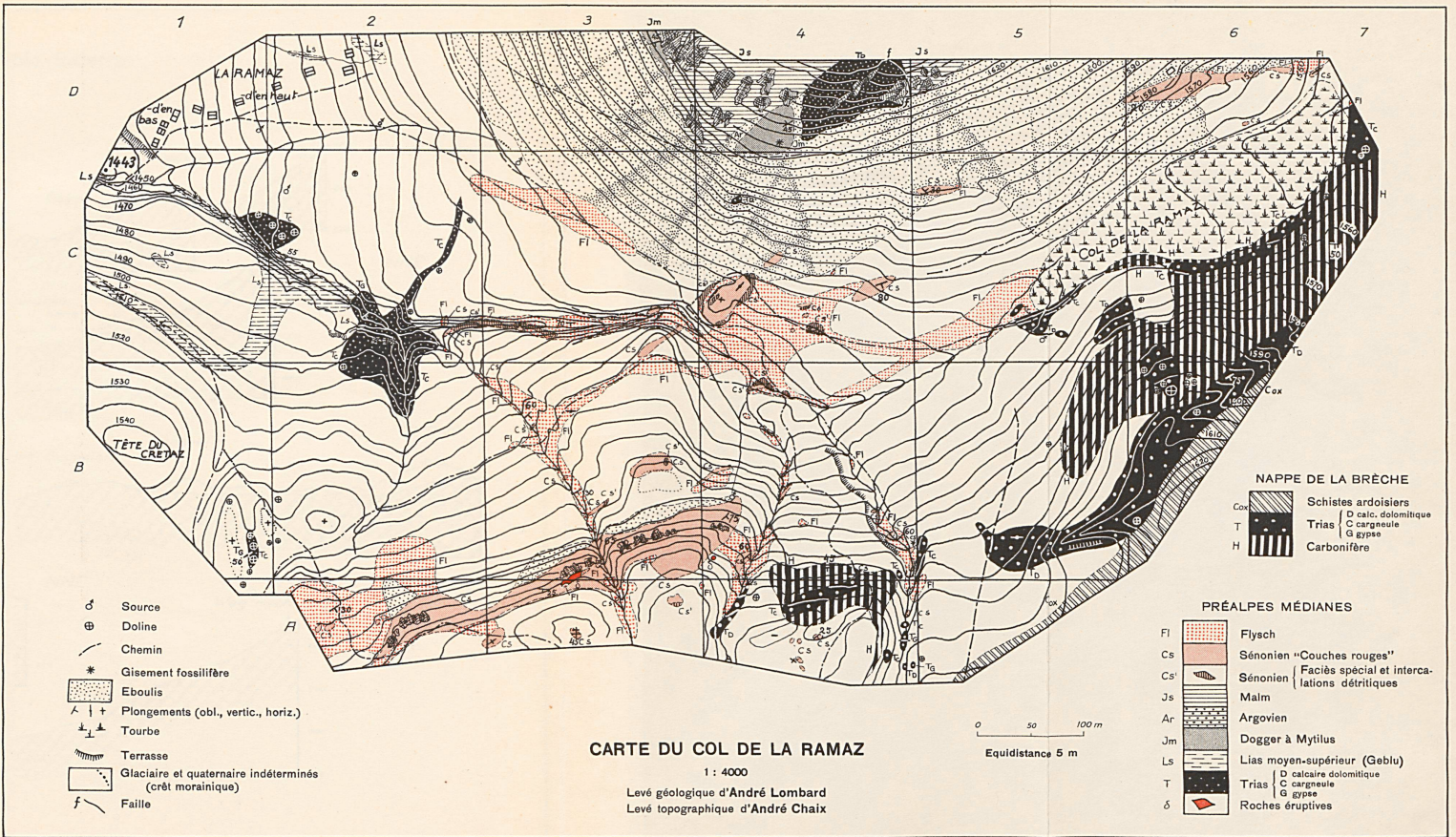
1 La Crétacé (Col de la Ramaz et Chalet Blanc: des fragments de gneiss et de Trias se détachent de la falaise et tombent dans la mer sénonienne)

2 La série liasique

3 La série jurassique de l'anticlinal 8

4 Les trois Dogger

Fig. 2. SCHÉMAS PALÉOGÉOGRAPHIQUES

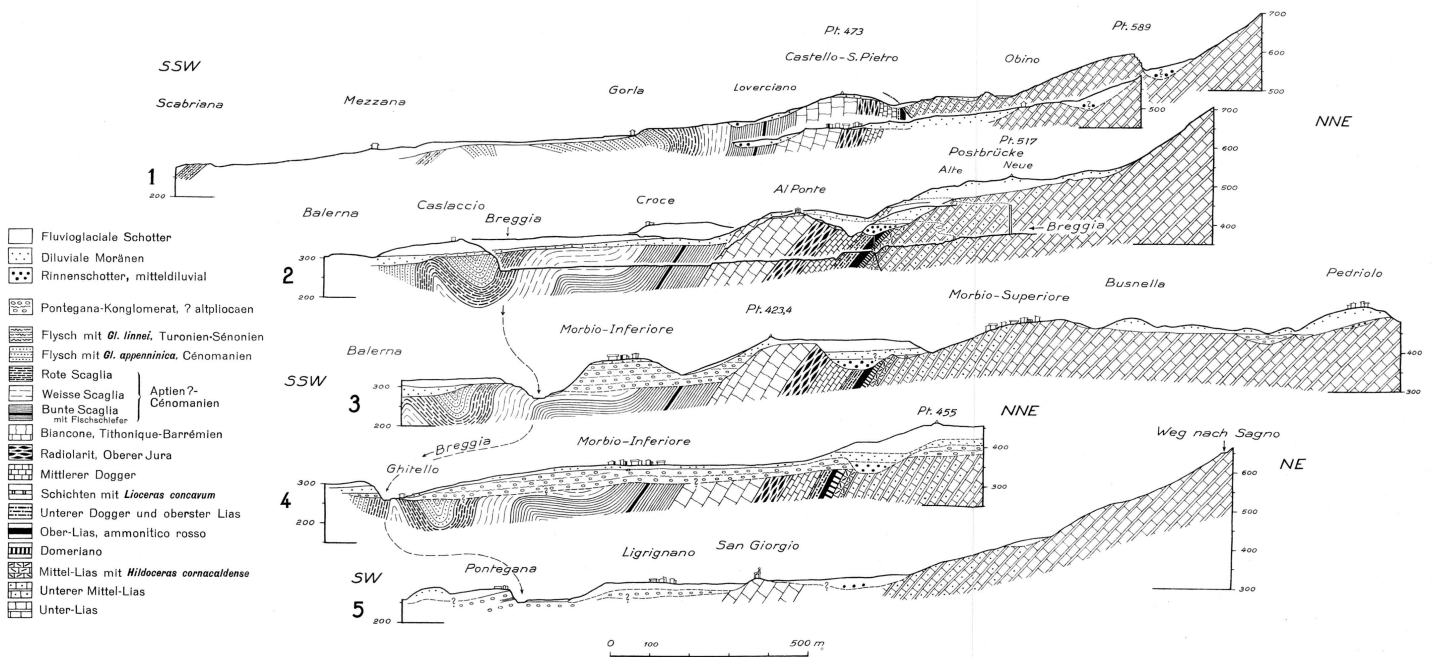


Autorisé officiellement le 20 VIII 1940
conformément à l'ACF du 3 X 1939.

WASSERMANN A.G., BASEL

Geologische Profile durch das Gebiet von Castello-S.Pietro-Morbio-Balerna

Masstab 1:10 000



Behördlich bewilligt am 6. III. 1941
gemäss BRB vom 3.X.1939.

WASSERMANN & SOHN, BASEL

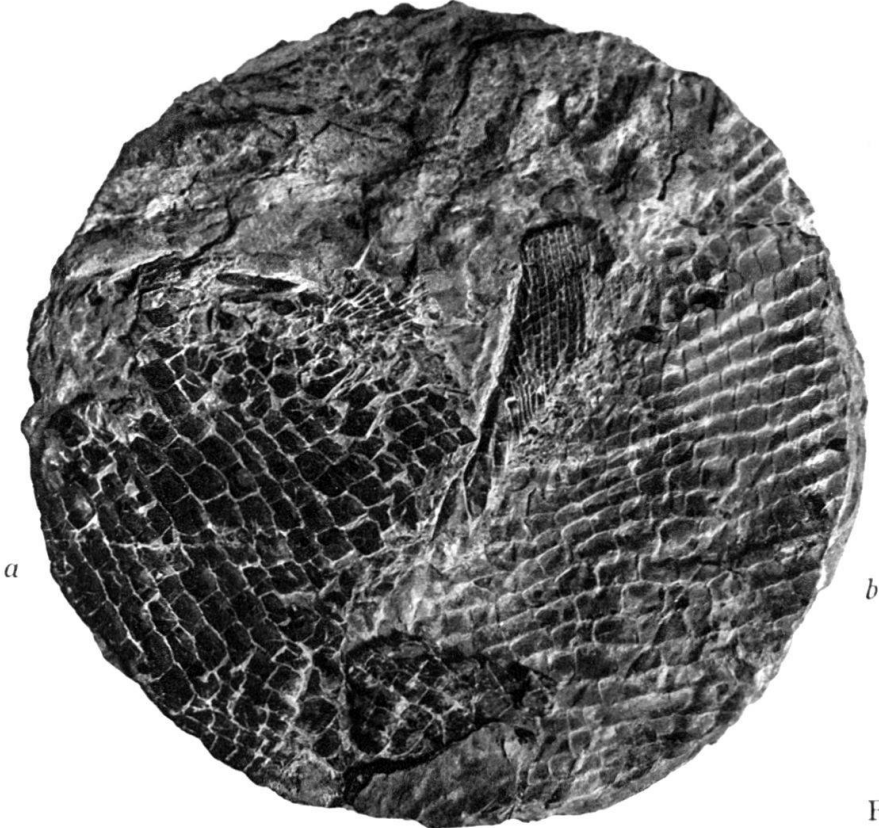


Fig. A

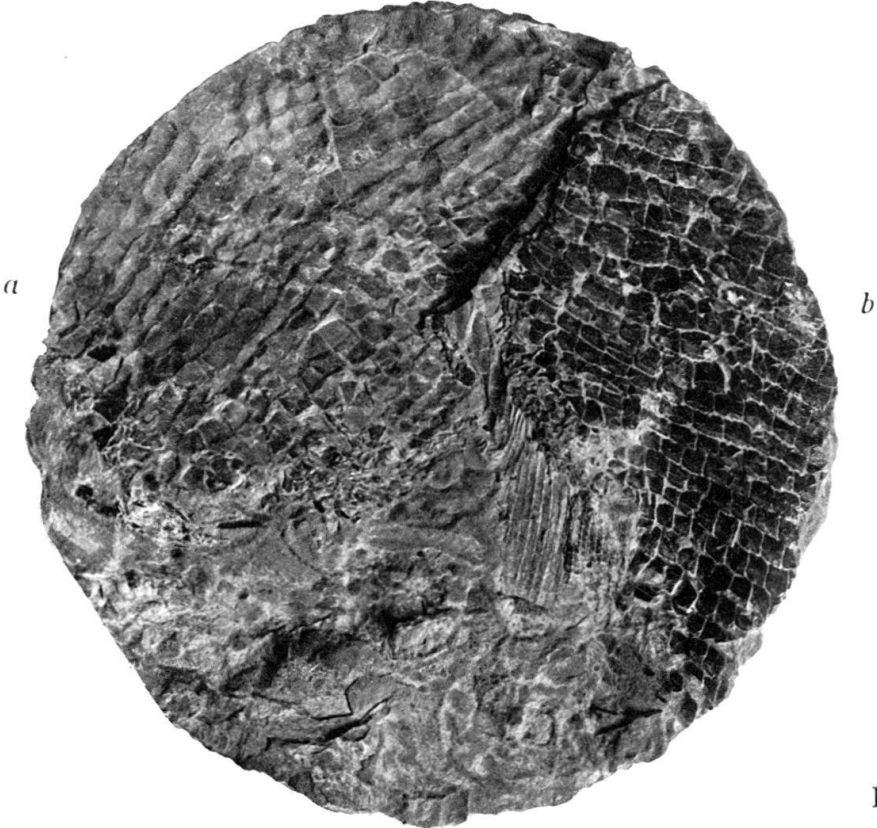
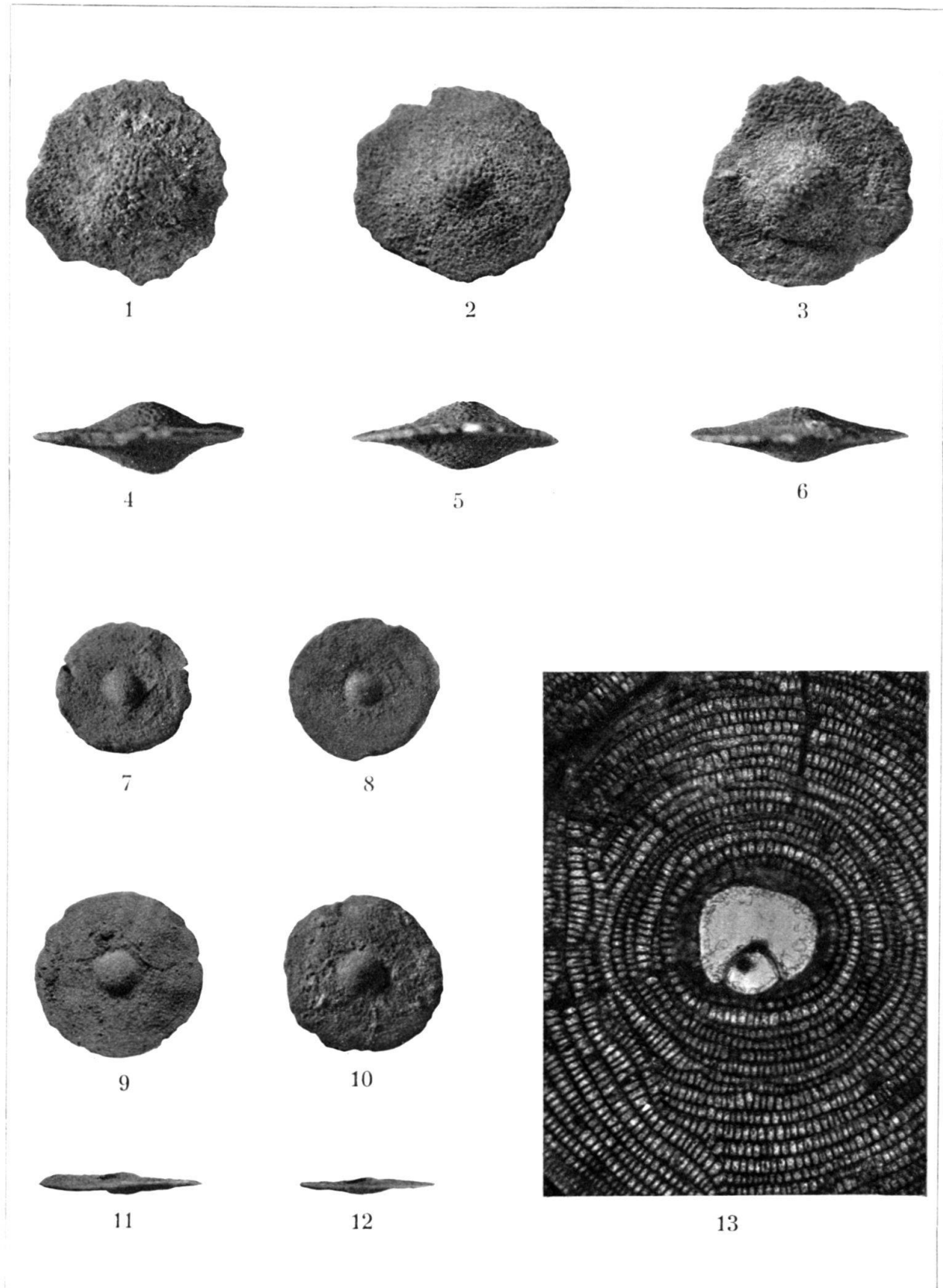
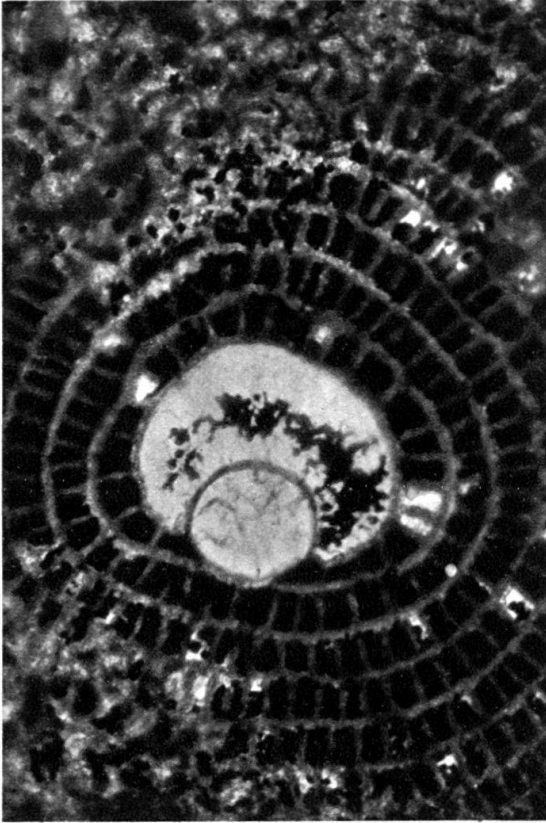
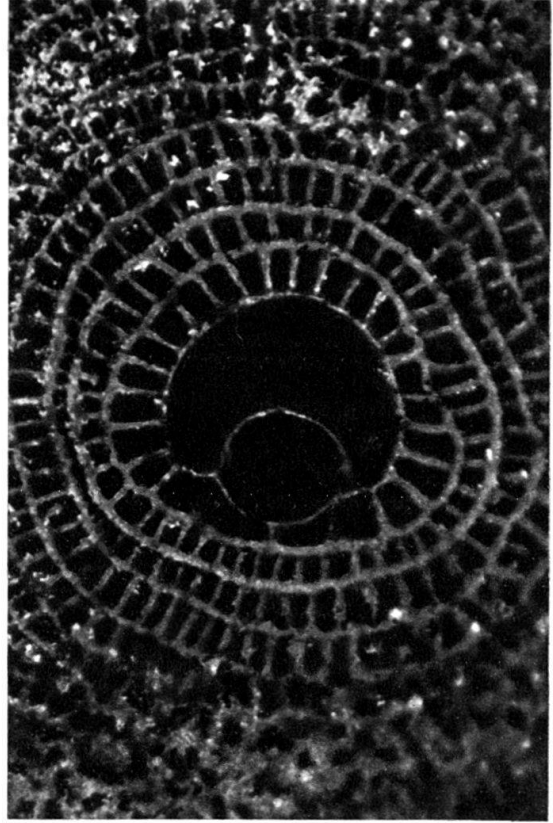


Fig. B





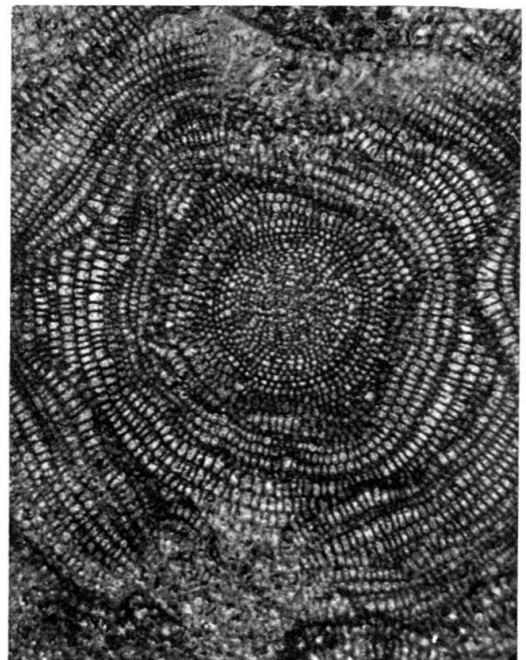
1



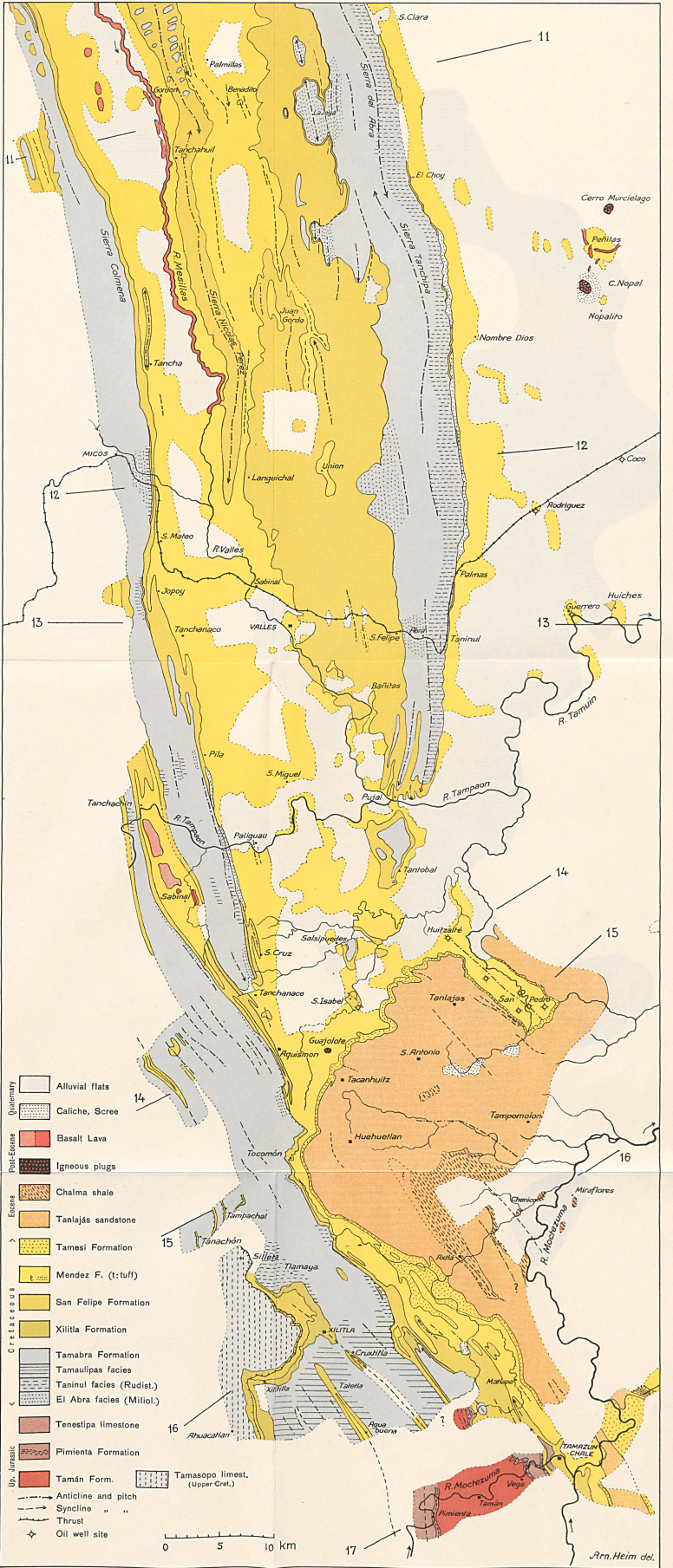
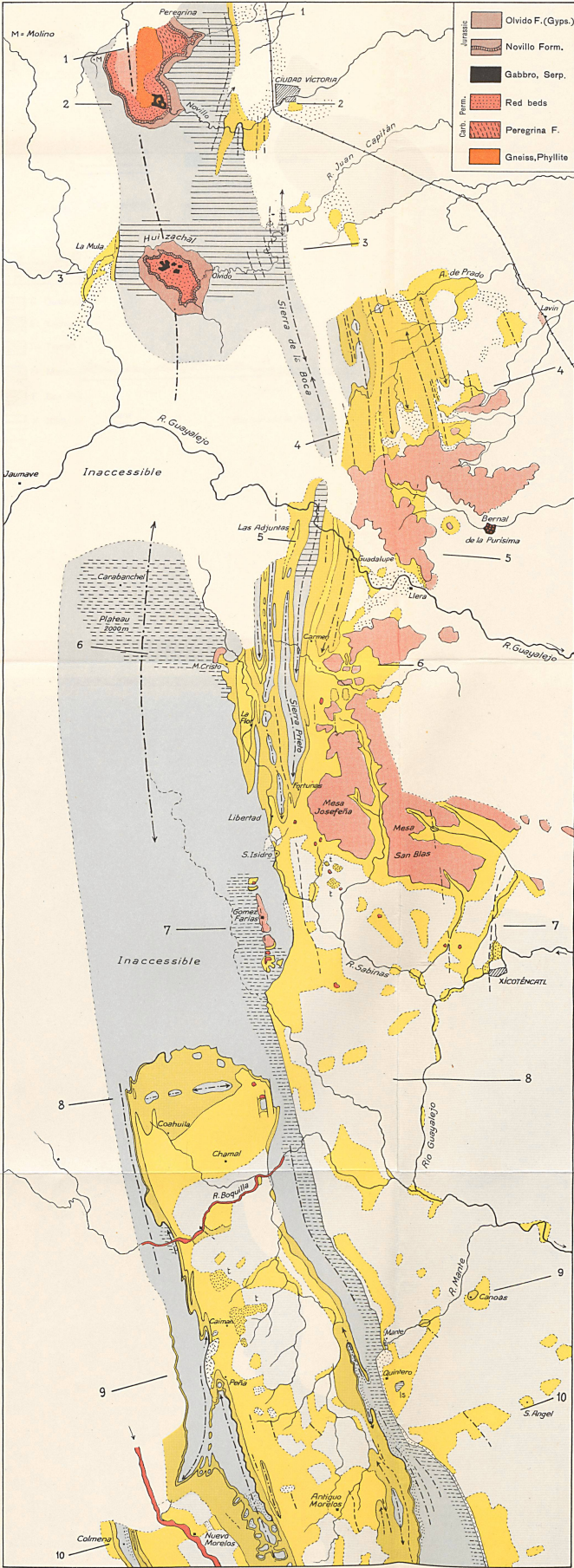
2



3

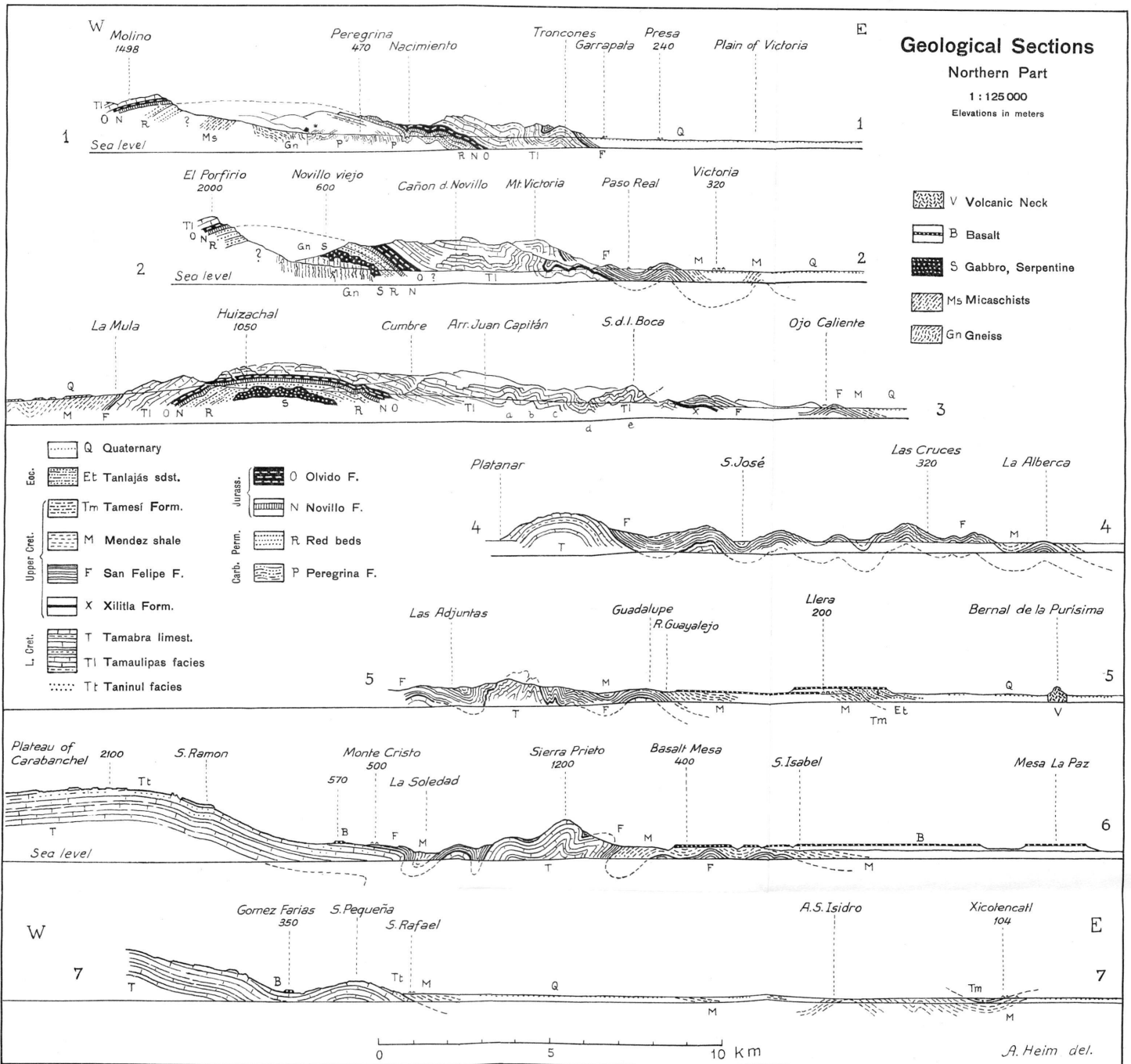


4



Geological Map of Sierra Madre Oriental, Mexico, from Victoria to Tamazunchale

1:300 000



A. Heim del.
WASSERMANN & S. BASEL

Geological Sections

Southern Part
1:125 000
Elevations in meters

- Escena
- Et Tanlaías sandst.
- Tm Tamesí Formation
- M Mendez shale
- Ts Tamasopo limest.
- F San Felipe Form.
- X Xilitla Form.
- Lower Cretaceous
- T Tamabra limest.
- Ti Tamaulipas facies
- Tt Taniul facies (Rudist.)
- Te Tenestipa limest. (= Tamabra ?)
- Up. Jur.
- P Pimienta beds (Portl.)
- Ta Tamán F. (Kimer.)
- B Basalt
- + Ammonites
- x Thrusts

