

Zeitschrift: Eclogae Geologicae Helvetiae
Herausgeber: Schweizerische Geologische Gesellschaft
Band: 85 (1992)
Heft: 3: Symposium on Swiss Molasse Basin

Artikel: An impactite horizon in the Upper Freshwater Molasse in Eastern Switzerland : distal ries ejecta?
Autor: Hofmann, B. / Hofmann, F.
DOI: <https://doi.org/10.5169/seals-167051>

Nutzungsbedingungen

Die ETH-Bibliothek ist die Anbieterin der digitalisierten Zeitschriften. Sie besitzt keine Urheberrechte an den Zeitschriften und ist nicht verantwortlich für deren Inhalte. Die Rechte liegen in der Regel bei den Herausgebern beziehungsweise den externen Rechteinhabern. [Siehe Rechtliche Hinweise.](#)

Conditions d'utilisation

L'ETH Library est le fournisseur des revues numérisées. Elle ne détient aucun droit d'auteur sur les revues et n'est pas responsable de leur contenu. En règle générale, les droits sont détenus par les éditeurs ou les détenteurs de droits externes. [Voir Informations légales.](#)

Terms of use

The ETH Library is the provider of the digitised journals. It does not own any copyrights to the journals and is not responsible for their content. The rights usually lie with the publishers or the external rights holders. [See Legal notice.](#)

Download PDF: 01.04.2025

ETH-Bibliothek Zürich, E-Periodica, <https://www.e-periodica.ch>

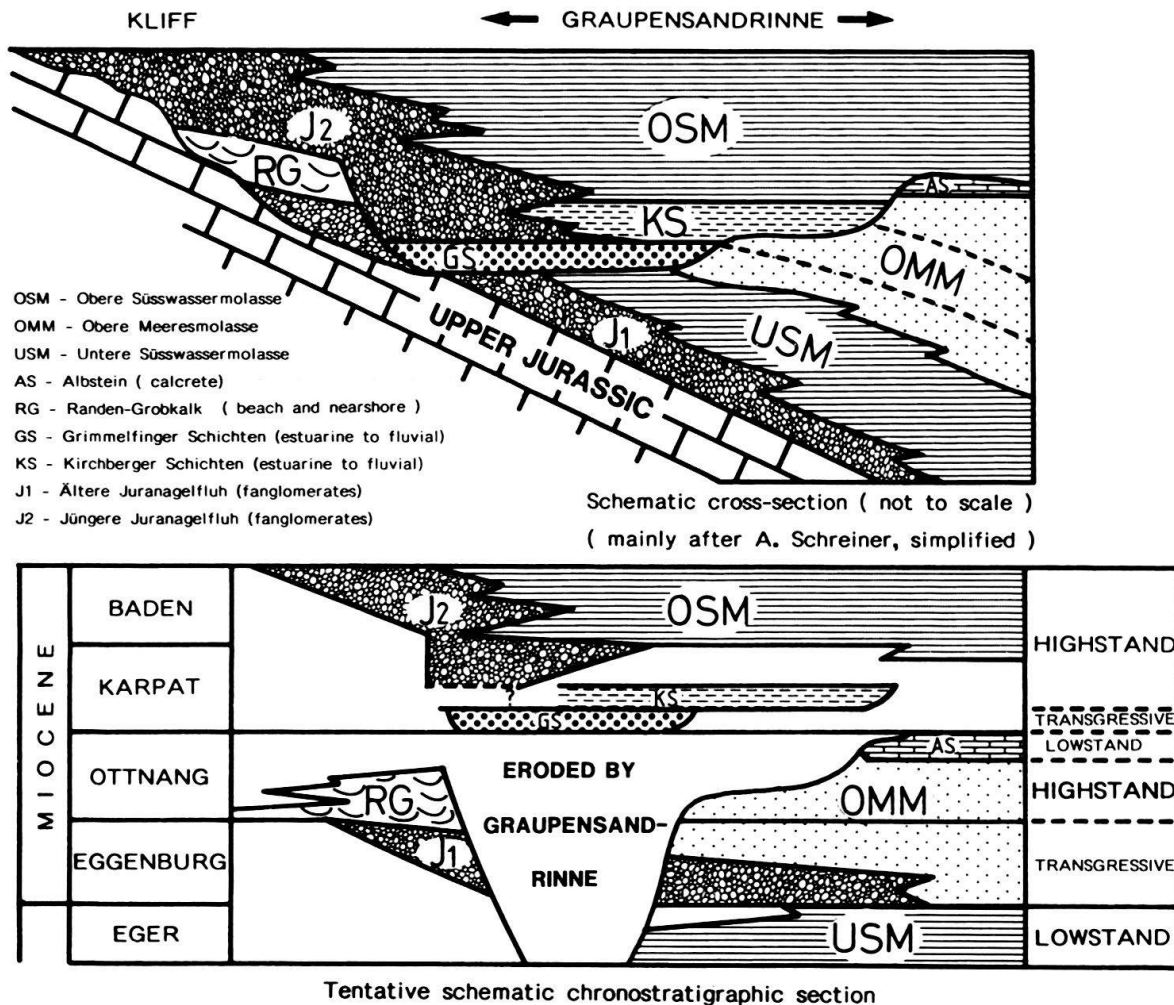


Fig. 3. Schematic cross section and chronostratigraphic section of the northern part of the SW German Molasse Basin.

An Impactite horizon in the Upper Freshwater Molasse in Eastern Switzerland: Distal Ries Ejecta? ¹⁾

By B. HOFMANN ²⁾ & F. HOFMANN ³⁾

²⁾ Natural History Museum, Bernastrasse 15, CH-3005 Bern

³⁾ Rosenbergstrasse 103, CH-8212 Neuhausen am Rheinflall

The "Blockhorizont", a horizon in the Upper Freshwater Molasse containing angular fragments of Mesozoic rocks was discovered in 1945 by F. H. and interpreted as a volcanic phenomenon. After the recognition of the Ries as an impact crater, an impact origin was advocated for the Blockhorizont (Hofmann 1973). At that time, an origin from the Ries at 160 km distance seemed impossible and a local impact in the

¹⁾ Abstract to Poster

Swiss Molasse basin was assumed. The recent discovery of meteorites from Mars and Moon and the recognition of an impactite horizon at a distance of up to 500 km from the Acraman crater, Australia (Wallace et al. 1989), demonstrate that high-velocity ejection (several 1000 ms^{-1}) of only moderately shocked material is possible as a result of stress wave interference in near-surface areas close to impact sites (Melosh 1989). These new insights led to the reinvestigation of the Blockhorizont in order to strengthen impact arguments and to find evidence to prove or disprove a Ries/Steinheim origin.

The Upper Freshwater Molasse NW of St. Gallen, eastern Switzerland, consists of fluvioterrestrial marls with minor conglomerates and lacustrine deposits and a few volcanic ash horizons. The Blockhorizont is located about 70 m below the Bischofszell bentonite, dated with the K–Ar- and U–Pb-method (Fischer et al. 1987) at 14.6 and $14.4 \pm 0.06 \text{ Ma}$, respectively. Assuming a typical Molasse sedimentation rate of 500 m per Ma, the U–Pb zircon age of the bentonite leads to an age of about 14.5 Ma for the Blockhorizont, in excellent agreement with the $14.8 \pm 0.7 \text{ Ma}$ age of the Ries crater.

The impactite horizon is contained in yellow-brown smectitic marl and is easily recognized in the field due to the abundant presence of angular blocks and fragments of fossiliferous limestone of Oxfordian to Kimmeridgian age (< 1 to 22 cm in diameter) and of angular red clay fragments, probably of Keuper origin (< 1 to 10 cm). Field observations and sectioning of marl blocs show that ejecta are distributed over a vertical extent of 10 to 15 cm. In the HCl-resistant sand fraction, quartz grains exhibiting several sets of parallel planar features (shock lamellae) were detected, providing clear evidence of impact-related shock metamorphism associated with the Blockhorizont.

The presently available data all are consistent with an origin from the Ries crater (with a possible contribution from Steinheim). At a distance of 160 to 200 km from the Ries, the high density of the ejecta is surprising. We estimate that the average density of Malm fragments is about $4 \text{ kg} \cdot \text{m}^{-2}$, that of silicate grains $0.1 \text{ kg} \cdot \text{m}^{-2}$. The high density of ejecta indicates that the Ries impact likely had a significant influence on the Miocene environment in Central Europe.

Acknowledgements

We thank R. Gygi for the determination of ammonites and H. J. Melosh for useful comments on impact ejection processes.

REFERENCES

- FISCHER, H., OBERLI, F. & MEIER, M. 1987: U–Pb und K–Ar-Datierungen an OSM-Bentoniten. Abstract, Jahrestagung Schweiz. natf. Ges. in Luzern.
- HOFMANN, F. 1973: Horizonte fremdartiger Auswürflinge in der ostschweizerischen Oberen Süsswassermolasse und Versuch einer Deutung ihrer Entstehung als Impaktphänomen. *Eclogae geol. Helv.* 66, 83–100.
- MELOSH, H. J. 1989: *Impact cratering*. Oxford Monographs on Geology and Geophysics No 11. Oxford University press, New York.
- WALLACE, M. W., GOSTIN, V. A. & KEAYS, R. R. 1989: Geological note: Discovery of the Acraman impact ejecta blanket in the Officer basin and its stratigraphic significance. *Aust. J. Earth Sci.* 36, 585–587.