

Zeitschrift: Eclogae Geologicae Helvetiae
Herausgeber: Schweizerische Geologische Gesellschaft
Band: 89 (1996)
Heft: 3

Artikel: The larger Foraminifera of Trinidad (West Indies)
Autor: [s.n.]
Anhang: Plates
DOI: <https://doi.org/10.5169/seals-167940>

Nutzungsbedingungen

Die ETH-Bibliothek ist die Anbieterin der digitalisierten Zeitschriften. Sie besitzt keine Urheberrechte an den Zeitschriften und ist nicht verantwortlich für deren Inhalte. Die Rechte liegen in der Regel bei den Herausgebern beziehungsweise den externen Rechteinhabern. [Siehe Rechtliche Hinweise.](#)

Conditions d'utilisation

L'ETH Library est le fournisseur des revues numérisées. Elle ne détient aucun droit d'auteur sur les revues et n'est pas responsable de leur contenu. En règle générale, les droits sont détenus par les éditeurs ou les détenteurs de droits externes. [Voir Informations légales.](#)

Terms of use

The ETH Library is the provider of the digitised journals. It does not own any copyrights to the journals and is not responsible for their content. The rights usually lie with the publishers or the external rights holders. [See Legal notice.](#)

Download PDF: 29.03.2025

ETH-Bibliothek Zürich, E-Periodica, <https://www.e-periodica.ch>

Plate 1

- Fig. 1 *Operculina bontourensis* Caudri, n. sp., holotype p 1185
Point Bontour, St. 63, C 36023, × 10.
- Fig. 2 *Operculina bontourensis* Caudri, n. sp. p 1185
Farallon Rock, C 36024, × 10.
- Fig. 3–4 *Operculina bontourensis* Caudri n. sp. p 1185
Point Bontour, St. 63, C 36025, × 17.
- Fig. 5 *Operculinoides suteri* Caudri, n. sp., holotype p 1189
Calyx 59, 390–400 feet, C 35961, × 17.
- Fig. 6–8 *Operculinoides suteri* Caudri, n. sp. p 1189
San Fernando Railway Station, C 36026–36028 (Fig. 6–8), × 17.
- Fig. 9 *Heterostegina indicata* Caudri, n. sp. p 1193
Morne Roche Quarry, K.S. 167, C 35964, × 17
- Fig. 10 *Heterostegina indicata* Caudri, n. sp., holotype p 1193
Morne Roche Quarry, K.S. 167, C 35965, × 17.

Plate 1

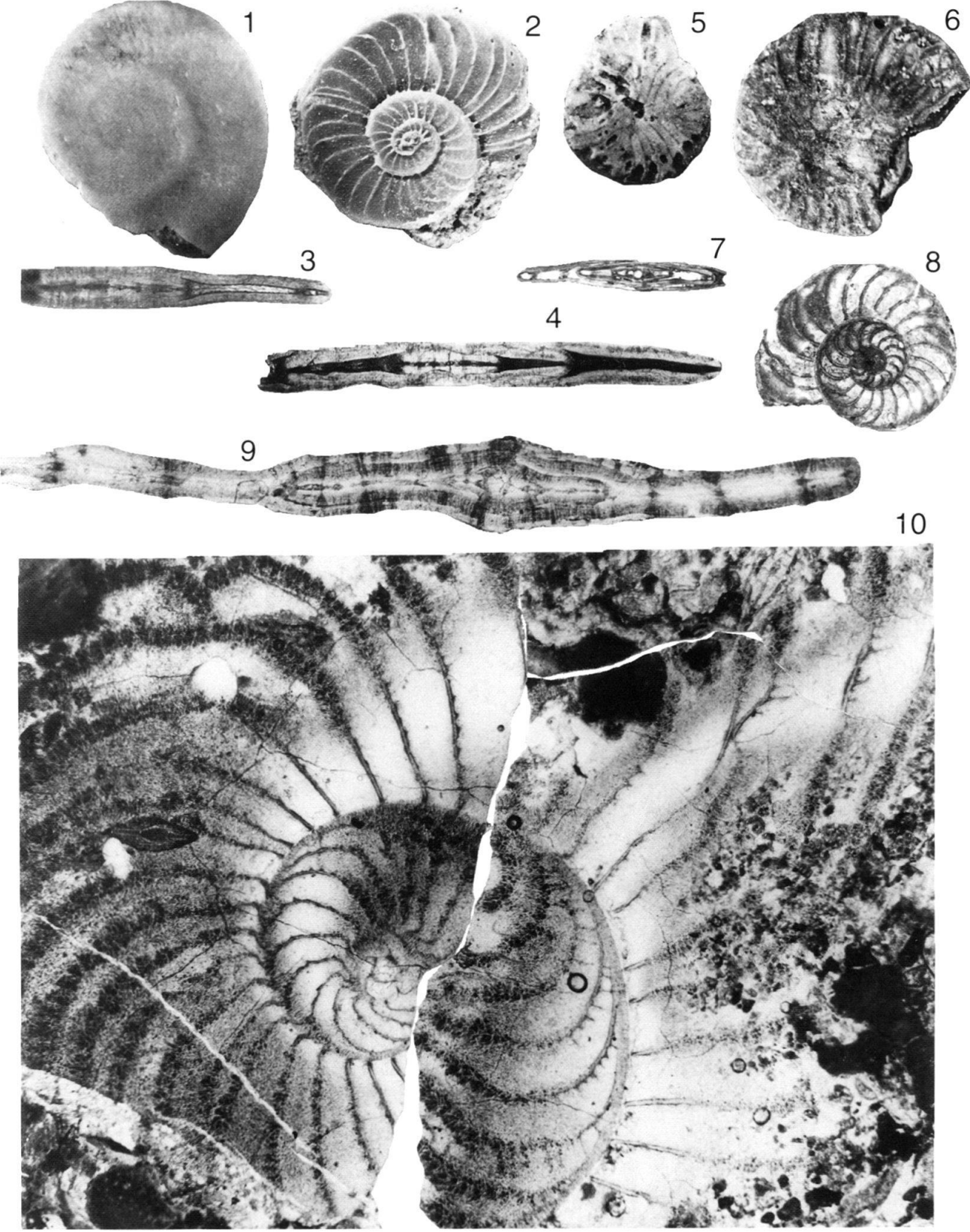


Plate 2

- | | | |
|-----------|--|---------|
| Fig. 1 | <i>Amphistegina farallonensis</i> Caudri, n. sp., holotype
Farallon Rock, S.L. 99, C 35945, × 30. | p. 1235 |
| Fig. 2 | <i>Amphistegina farallonensis</i> Caudri, n. sp.
Farallon Rock, S.L. 99, C 35946, × 30. | p. 1235 |
| Fig. 3 | <i>Helicolepidinoides intermedius</i> Caudri, n. sp.
Point Bontour, St. 68, C 36075, × 30. | p. 1231 |
| Fig. 4 | <i>Helicolepidinoides intermedius</i> Caudri, n. sp., B-form
Vistabella Quarry, coll. Lehner 1933, C 36073, × 30. | p. 1231 |
| Fig. 5 | <i>Helicolepidinoides intermedius</i> Caudri, n. sp.
broken specimen showing the alar prolongations (no lateral chambers), Farallon
Rock, coll. Stainforth, Renz & Rutsch 1939, C 36072, × 30. | p. 1231 |
| Fig. 6 | <i>Helicolepidinoides intermedius</i> Caudri, n. sp.
axial section, Farallon Rock, same locality, C 36037, × 30. | p. 1231 |
| Fig. 7 | <i>Helicolepidinoides intermedius</i> Caudri n. sp.
A-form, holotype, Point Bontour, St. 68, C 36038, × 30. | p. 1231 |
| Fig. 8 | <i>Helicolepidinoides intermedius</i> Caudri, n. sp.
tangential section, Point Bontour, St. 68, C 36074, × 30. | p. 1231 |
| Fig. 9–10 | <i>Helicolepidina polygyralis</i> Barker
N.W. Colombia, Province of Bolivar, v.S. 795 Middle Eocene (introduced for
comparison with <i>Helicolepidinoides intermedius</i>), C 36035 (Fig. 9), C 36036
(Fig. 10), × 30. | |
| Fig. 11 | <i>Eoconuloides senni</i> var. <i>conicus</i> Caudri, n. var., holotype
Charuma, A.E.G. 3635B, C 36032, × 30. | p. 1230 |
| Fig. 12 | <i>Lepidocyclina (Polylepidina) nitida</i> Caudri, n. sp., holotype
Farallon Rock, coll. Stainforth, Renz & Rutsch 1939, C 35930, × 30. | p. 1215 |
| Fig. 13 | <i>Lepidocyclina (Polylepidina) nitida</i> Caudri, n. sp.
with slightly conical equatorial layer, Farallon Rock, S.L. 99, C 36034, × 30. | p. 1215 |
| Fig. 14 | <i>Lepidocyclina asterocolumnata</i> Caudri, n. sp., holotype
Cipero coast, Grimsdale 2, C 36060, × 17. | p. 1229 |

Plate 2

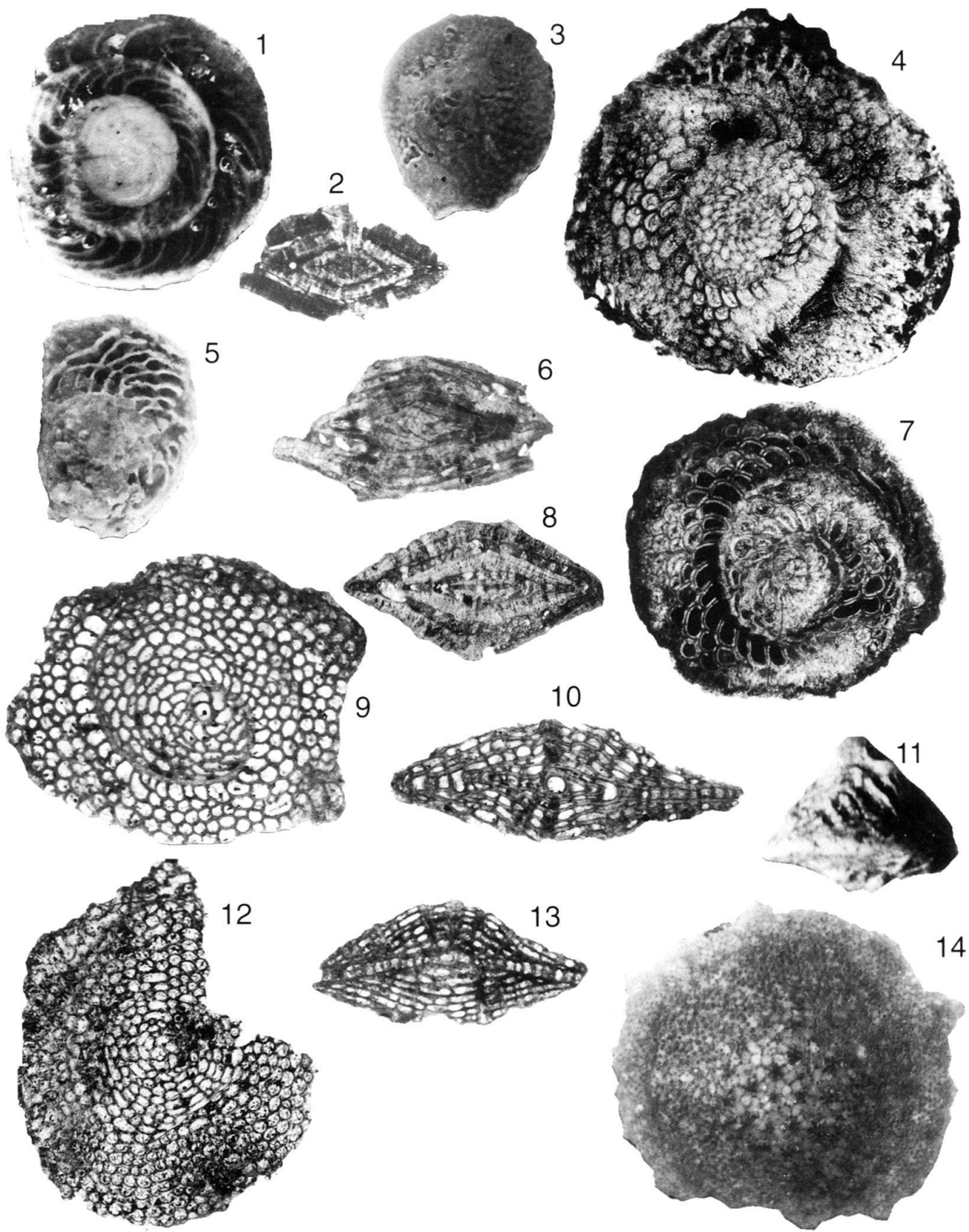


Plate 3

- Fig. 1 *Lepidocyclina sanfernandensis* var. *depressata* Caudri, n. var. p. 1223
holotype, Ciperco coast, C.S. 11, C 35998, × 8.
- Fig. 2 *Lepidocyclina sanfernandensis* var. *depressata* Caudri, n. var. p. 1223
Ciperco coast, C.S. 11, C 35999, × 17.
- Fig. 3 *Lepidocyclina* cf. *supera* (Conrad), large variety p. 1226
ground down to equatorial layer (see Fig. 5), Ciperco coast, Grimsdale 2, C 36062, × 17.
- Fig. 4 *Operculinoides ocalanus* var. *decoratus* Caudri, n. var. p. 1187
holotype, Point Bontour, St. 68, C 36030, × 17.
- Fig. 5 *Lepidocyclina* cf. *supera* (Conrad), large variety p. 1226
(see Fig. 3), Ciperco coast, Grimsdale 2, C 36062, × 17.
- Fig. 6 *Lepidocyclina yurnagunensis* var. *inflata* Caudri, n. var. p. 1221
holotype, Ciperco coast, Grimsdale 2, C 35972, × 17.
- Fig. 7 *Lepidocyclina sanfernandensis* var. *depressata* Caudri, n. var. p. 1223
Ciperco coast, C.S. 11, C 36076, × 17.

Plate 3

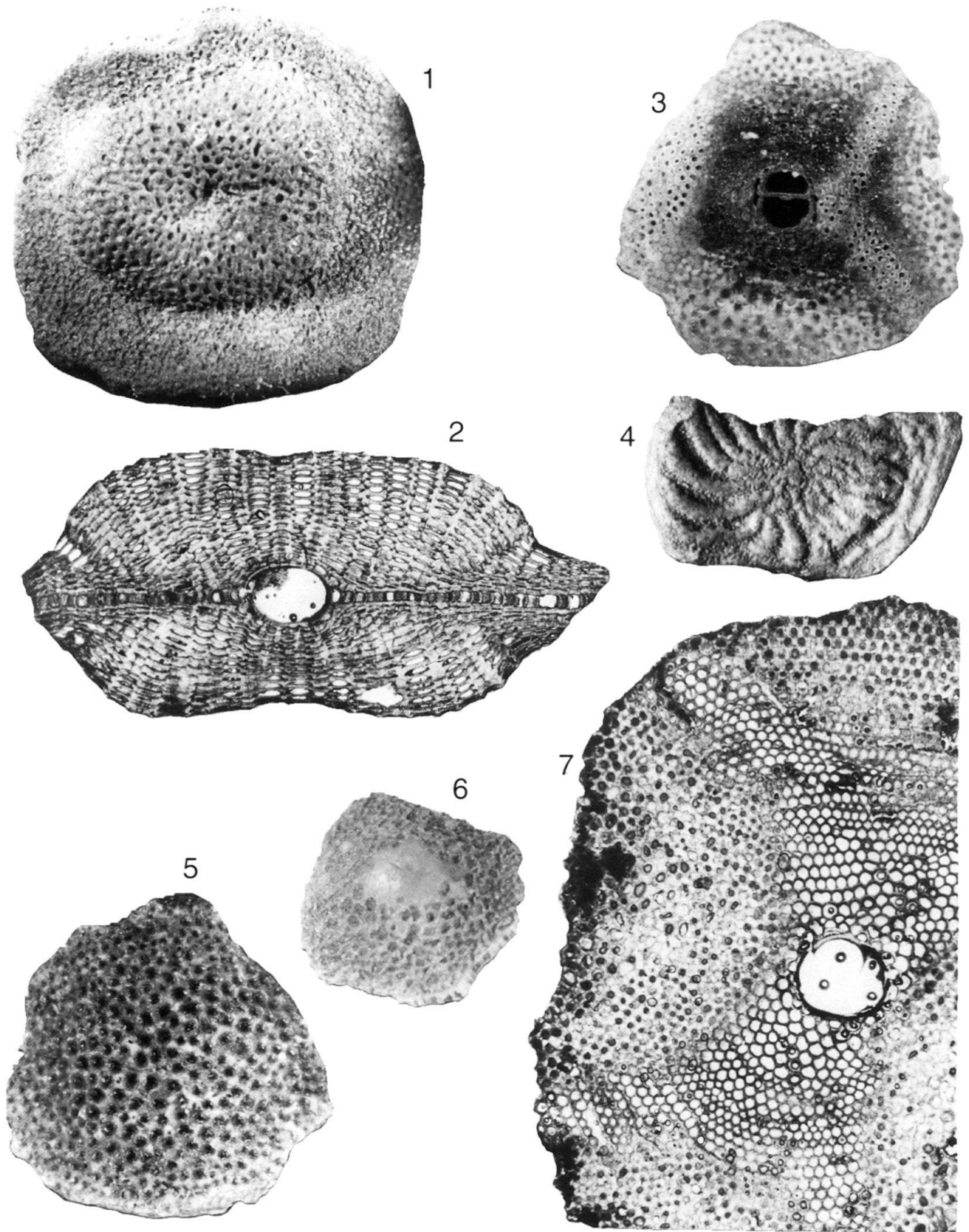


Plate 4

- Fig. 1 *Helicolepidina spiralis* Tobler, B-form p. 1233
section exactly through the spiral of the nepiont (same specimen as Pl. 15:11),
Point Bontour, St. 63, C 35925, × 17.
- Fig. 2 *Helicolepidina spiralis* Tobler, B-form p. 1233
section through the trochoid level of the nepiont (compare with Pl. 15:11),
Soldado Rock, K. 3677, C 31172, × 50.
- Fig. 3 *Hexagonocyclina meandrica* Caudri p. 1202
Soldado Rock, K. 2951, C 31148, × 50.

Plate 4

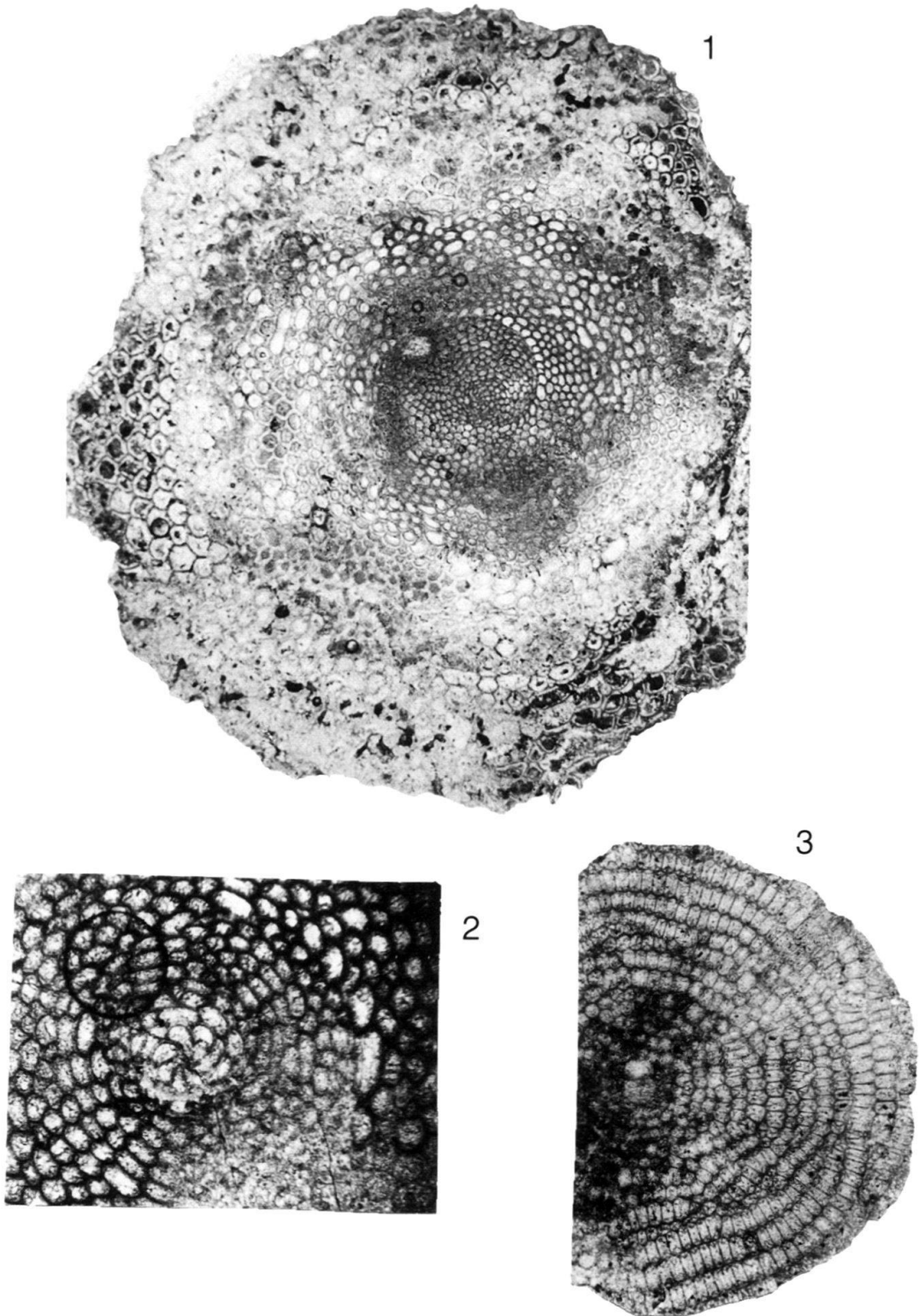


Plate 5

- | | | |
|---------|---|---------|
| Fig. 1 | <i>Ranikothalia antillea</i> (Hanzawa)
Lizard Springs, Mky 102b III, U.S.N.M. Washington, × 17. | p. 1183 |
| Fig. 2 | <i>Ranikothalia antillea</i> (Hanzawa)
Lizard Springs, Mky 102b III, U.S.N.M. Washington, × 17. | p. 1183 |
| Fig. 3 | <i>Ranikothalia tobleri</i> (Vaughan & Cole)
Lizard Springs, Mky 102b III, U.S.N.M. Washington, × 17. | p. 1183 |
| Fig. 4 | <i>Ranikothalia soldadensis</i> (Vaughan & Cole)
juvenile specimen, Lizard Springs, Mky 102b III, U.S.N.M. Washington, × 17. | p. 1185 |
| Fig. 5 | <i>Operculinoides ocalanus</i> (Cushman)
Vistabella area, St. 45, C 31249, × 17. | p. 1187 |
| Fig. 6 | <i>Operculinoides soldadensis</i> Vaughan & Cole
Soldado Rock, K. 3692, C 31180, × 17. | p. 1187 |
| Fig. 7 | <i>Operculina bontourensis</i> var. <i>ornata</i> Caudri, n. var., holotype
Point Bontour, St. 63, C 36045, × 17. | p. 1187 |
| Fig. 8 | <i>Operculinoides spiralis</i> Caudri
Point Bontour, St. 46, C 31251, × 17. | p. 1189 |
| Fig. 9 | <i>Operculinoides kugleri</i> Vaughan & Cole
Point Bontour, St. 63, C 36039, × 17. | p. 1188 |
| Fig. 10 | <i>Operculinoides semmesi ciperensis</i> Vaughan & Cole
Cipero Coast, Cd. 26, C 35954, × 17. | p. 1191 |
| Fig. 11 | <i>Operculinoides trinitatis</i> (Nuttall)
Soldado Rock, K. 2855, C 31131, × 17. | p. 1188 |
| Fig. 12 | <i>Operculinoides bullbrooki</i> Vaughan & Cole
juvenile form (or <i>cojimarensis</i>), Morne Diablo Quarry, K.S. 122, C 35952, × 17. | p. 1191 |
| Fig. 13 | <i>Nummulites striatoreticulatus</i> (Rutten)
small specimen, Point Bontour, St. 63, C 36041, × 17. | p. 1192 |
| Fig. 14 | <i>Operculinoides semmesi</i> Vaughan & Cole
Morne Diablo Quarry, K.S. 122, C 35955, × 17. | p. 1190 |
| Fig. 15 | <i>Operculinoides bullbrooki</i> Vaughan & Cole
Morne Diablo Quarry, E.L. 1178, C 36054, × 17. | p. 1191 |

Plate 5

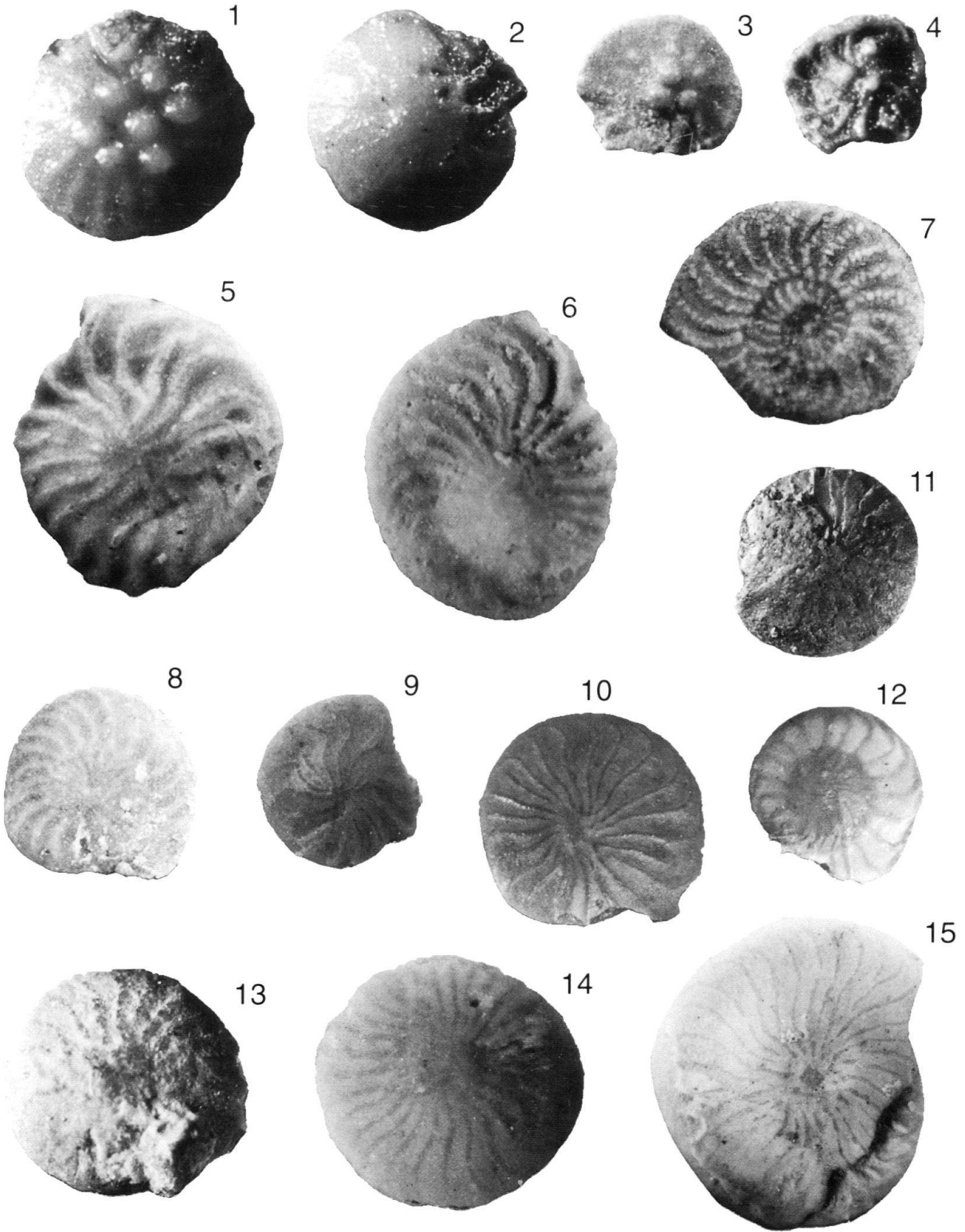


Plate 6

- | | | |
|----------|--|---------|
| Fig. 1 | <i>Operculinoides tuxpamensis</i> (Thalmann) Cole
(no central plug), Biche Quarry, C 35958, × 17. | p. 1192 |
| Fig. 2 | <i>Operculinoides tamanensis</i> Vaughan & Cole (topohyle)
Tamana-Carmichael Road, K.R. 7541, C 36046, × 17 | p. 1192 |
| Fig. 3–7 | <i>Asterocyclina asterisca</i> (Guppy), A-forms
Soldado Rock, Bed 9a, C 31124 (Fig. 3), C 31123 (Fig. 4), C 31064 (Fig. 5),
C 31063 (Fig. 6), C 31065 (Fig. 7), × 9. | p. 1207 |
| Fig. 8 | <i>Asterocyclina asterisca</i> (Guppy), B-form
Soldado Rock, Bed 9a, C 31129, × 9. | p. 1207 |
| Fig. 9 | <i>Hexagonocyclina inflata</i> Caudri, holotype
Point Bontour, St. 63, × 17. | p. 1203 |
| Fig. 10 | <i>Lepidocyclina pustulosa</i> (H. Douvillé) s. l.
common eroded form (after Vaughan & Cole 1941), Soldado Rock, K. 2854,
U.S.N.M. Washington, × 17. | p. 1218 |
| Fig. 11 | <i>Hexagonocyclina meandrica</i> Caudri
Soldado Rock, Bed 3, K. 2950, C 31132, × 17. | p. 1202 |
| Fig. 12 | <i>Lepidocyclina peruviana</i> Cushman
Soldado Rock, K. 1500, C 31077, × 17. | p. 1217 |
| Fig. 13 | <i>Helicolepidina spiralis</i> Tobler
with radiating rows of lateral chambers near edge, Point Bontour, St. 63, C 36052, × 17. | p. 1233 |
| Fig. 14 | <i>Asterocyclina soldadensis</i> Caudri
Navette area, R.M. 1337, C 35947, × 17. | p. 1209 |

Plate 6

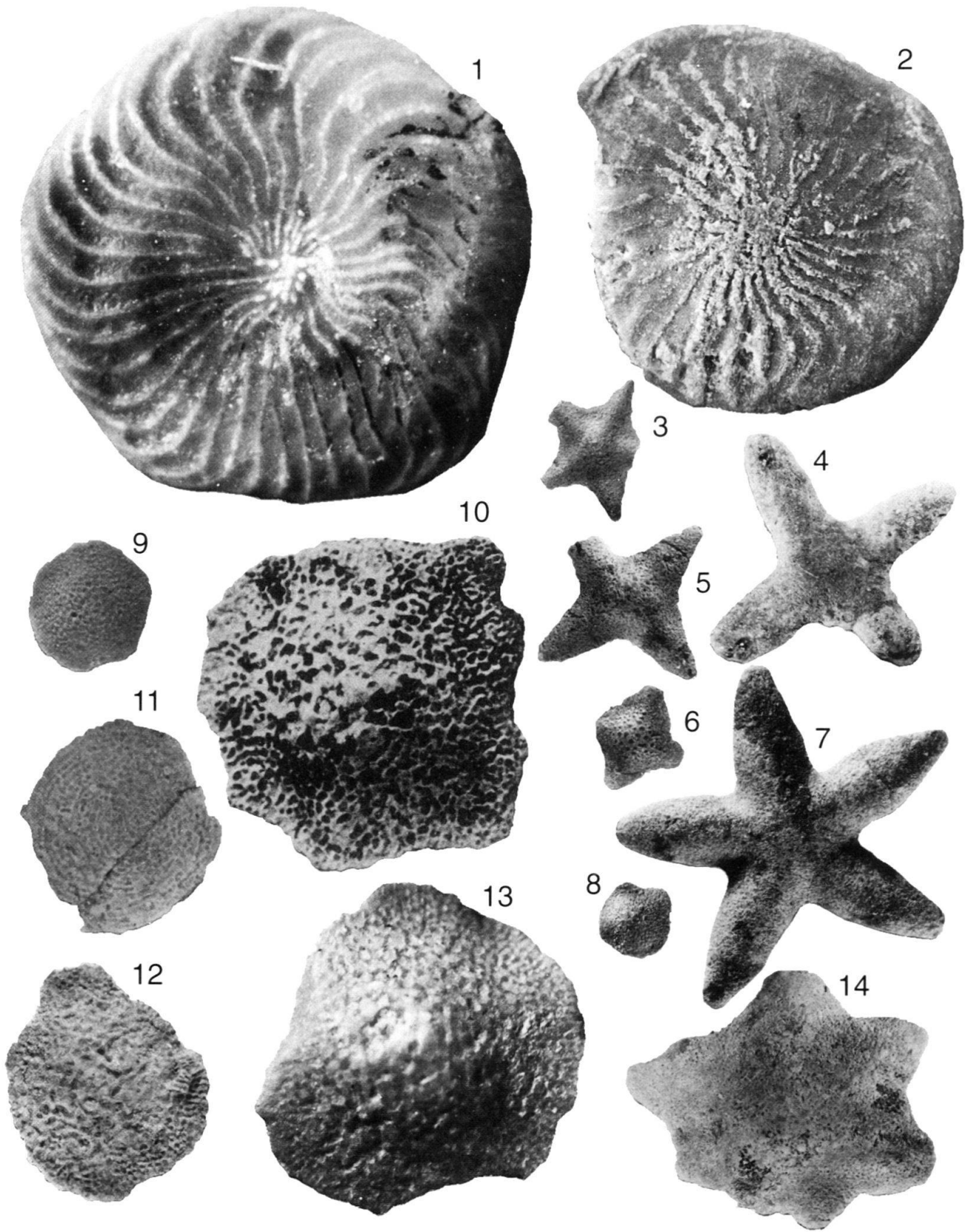


Plate 7

- | | | |
|---------|---|---------|
| Fig. 1 | <i>Asterocyclina (Miogypsina) vaughani</i> (Cushman)
Vistabella, Schlumberger office section, St. 148, C 35951, × 17. | p. 1208 |
| Fig. 2 | <i>Lepidocyclina yurnagunensis</i> Cushman
Common A-form, Ciperó Coast, Grimsdale 2, C 35966, × 17. | p. 1220 |
| Fig. 3 | <i>Lepidocyclina tempanii</i> Vaughan & Cole
Charuma, A.E.G. 4567, C 35975, × 17. | p. 1222 |
| Fig. 4 | <i>Lepidocyclina spatiosa</i> Caudri, B-form
Navette area, R.M. 1337, C 36069, × 9. | p. 1220 |
| Fig. 5 | <i>Lepidocyclina yurnagunensis</i> Cushman, B-form
Vistabella, E.L. 1207, C 35969, × 17. | p. 1220 |
| Fig. 6 | <i>Lepidocyclina subglobosa</i> Nuttall
intact specimen, Vistabella, E.L. 1435, C 35973, × 17. | p. 1221 |
| Fig. 7 | <i>Lepidocyclina subglobosa</i> Nuttall
common eroded form, Point Bontour, St. 79, C 36022, × 17. | p. 1221 |
| Fig. 8 | <i>Lepidocyclina pancanalis</i> Vaughan & Cole
Charuma, A.E.G. 1820, C 35993, × 17. | p. 1227 |
| Fig. 9 | <i>Lepidocyclina spatiosa</i> Caudri, A-form
Navette area, R.M. 1337, C 31259, × 9. | p. 1220 |
| Fig. 10 | <i>Lepidocyclina giraudi</i> R. Douvillé
Morne Diablo Quarry, K. coll. 12-1-41 (photographed specimen lost, replaced by one from K.S. 21), C 36021, × 9. | p. 1228 |
| Fig. 11 | <i>Lepidocyclina forresti</i> Vaughan
pillarless variety, Morne Diablo Quarry, K.S. 70, C 36003, × 9. | p. 1226 |

Plate 7

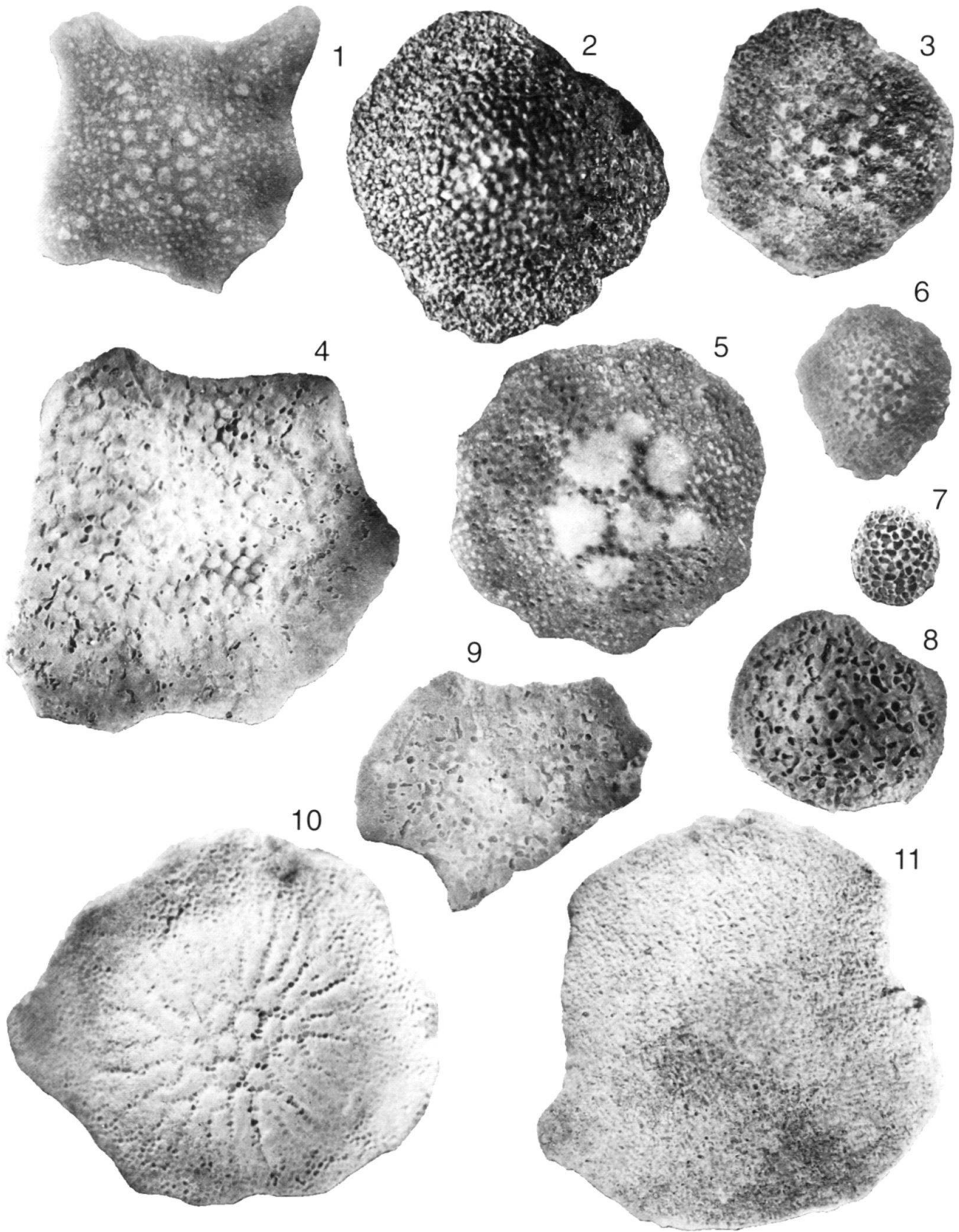


Plate 8

- Fig. 1 *Miogypsina (Miogypsina) gunteri* Cole p. 1236
Kapur Quarry, Lz. 3473, C 35916, × 17.
- Fig. 2 *Miogypsina (Miolepidocyclina) staufferi* Koch p. 1237
A-form, Morne Diablo Quarry, K. 2668, C 35918, × 17.
- Fig. 3 *Miogypsina* sp., B-form
(with colony of Bryozoa attached to the surface) Morne Diablo Quarry, K.S. 70,
C 35922, × 17.
- Fig. 4 *Miogypsina (Miogypsina) bramletti* Gravell p. 1237
Morne Diablo Quarry, K.S. 19b, C 36019, × 17.
- Fig. 5 *Miogypsina (Miogypsina) hawkinsi* Hodson p. 1236
Morne Diablo Quarry, K. coll. 12-1-41, C 35917, × 17.
- Fig. 6 *Heterostegina antillea* Cushman
Moruga River District, BB. 5958, C 36015, × 17.
- Fig. 7 *Spiroclypeus bullbrooki* Vaughan & Cole p. 1193
Marac River, K. 482, C 36049, × 14.
- Fig. 8 *Planorbulinella trinitatis* (Nuttall) p. 1237
Morne Diablo Quarry, K.S. 70, C 36055, × 17.
- Fig. 9–10 *Planorbulinella trinitatis* (Nuttall) p. 1237
both sides of same specimen, Biche Quarry, C 36051, × 17.
- Fig. 11 *Sorites* sp. p. 1237
edge, Sainte Croix Quarry, C 36043, × 60.
- Fig. 12 *Sorites* sp. p. 1237
eroded surface, Sainte Croix Quarry, C 36043, × 60.
- Fig. 13 *Cycloloculina jarvisi* Cushman
Soldado Rock, K. 3692 (same specimen as Pl. 29:3), C 31049, × 17.,
- Fig. 14 *Amphistegina pregrimsdalei* Caudri p. 1234
Farallon Rock, C 35944, × 30.
- Fig. 15 *Amphistegina grimsdalei* Caudri, common form p. 1234
Soldado Rock, K. 3677, C 31173, × 30.
- Fig. 16 *Amphistegina grimsdalei* Caudri p. 1234
flat flaring form, Soldado Rock, K. 3677, C 31089, × 30.
- Fig. 17 *Helicosteginopsis soldadensis* (Grimsdale) p. 1235
Soldado Rock, K. 2651, C 31090, × 30.
- Fig. 18 *Eoconuloides senni* (Cushman) p. 1230
Calyx 50A, 194–199 feet, C 36012, × 30.
- Fig. 19 *Helicocyclina paucispira* (Barker & Grimsdale) p. 1236
Vistabella Estate, E.L. 1435, C 35940, × 30.

Plate 8

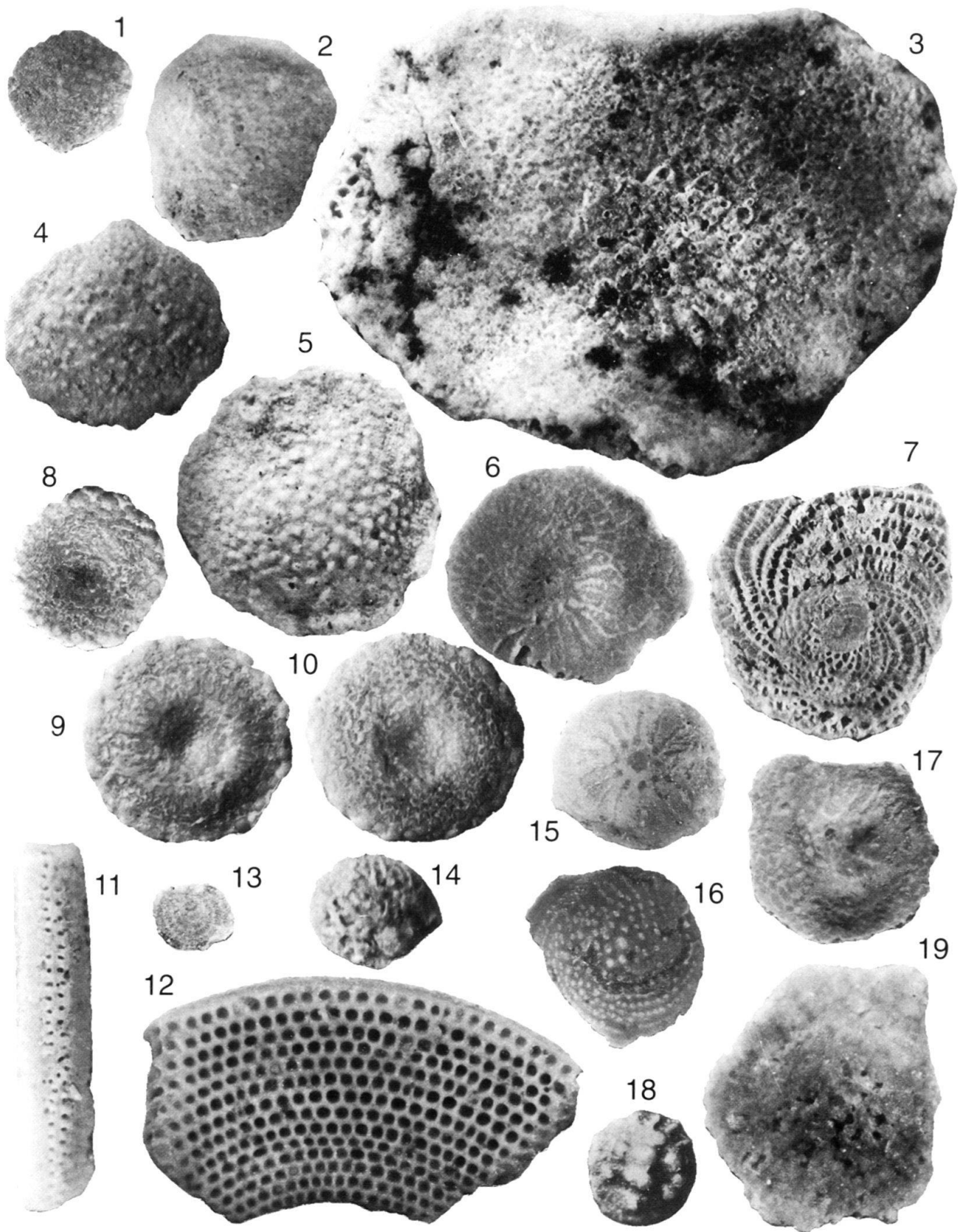


Plate 9

- Fig. 1 *Ranikothalia soldadensis* (Vaughan & Cole) p. 1185
vertical section in rock matrix, Soldado Rock, Rz. 248, C 31227, $\times 9$.
- Fig. 2 *Ranikothalia tobleri* (Vaughan & Cole), B-form p. 1183
Dunmore Hill, R.M.C. 2907 (reworked), Collection Shell in the Hague, $\times 17$.
- Fig. 3 *Operculina bontourensis* Caudri, n. sp. p. 1185
Point Bontour, St. 63 (reworked), C 36078, $\times 17$.
- Fig. 4 *Ranikothalia tobleri* (Vaughan & Cole), A-form p. 1183
canal system showing, boulder in Stollmeyer Quarry, Grimsdale 43, $\times 17$.
- Fig. 5 *Ranikothalia tobleri* (Vaughan & Cole) p. 1183
Lizard Springs, Mky 102b III, U.S.N.M. Washington, $\times 17$.
- Fig. 6 *Ranikothalia antillea* (Hanzawa) p. 1183
Lizard Springs, Mky 102b III, U.S.N.M. Washington, $\times 17$.
- Fig. 7 *Ranikothalia antillea* (Hanzawa) p. 1183
Lizard Springs, Mky 102b III, U.S.N.M. Washington, $\times 17$.
- Fig. 8 *Ranikothalia antillea* (Hanzawa) p. 1183
(reworked), Point Bontour, Cd. 18, $\times 17$.
- Fig. 9 *Ranikothalia antillea* (Hanzawa) p. 1183
(reworked), Point Bontour, St. 85, $\times 17$.
- Fig. 10 *Operculina bontourensis* Caudri, n. sp. p. 1185
(reworked), Point Bontour, St. 63, $\times 17$.
- Fig. 11 *Operculinoides ocalanus* (Cushman) Hanzawa p. 1187
Vistabella area, St. 45, C 31250, $\times 17$.
- Fig. 12 *Operculinoides ocalanus* (Cushman) Hanzawa p. 1187
Soldado Rock, J.S. 1950, C 31246, $\times 17$.
- Fig. 13 *Operculinoides ocalanus* (Cushman) Hanzawa p. 1187
Point Bontour, St. 63, C 36033, $\times 17$.
- Fig. 14 *Operculinoides soldadensis* Vaughan & Cole p. 1187
Soldado Rock, K. 3692, C 31179, $\times 17$.
- Fig. 15 *Operculinoides soldadensis* Vaughan & Cole p. 1187
Soldado Rock, J.S. 1950, C 31244, $\times 17$.
- Fig. 16 *Operculinoides trinitatis* (Nuttall) p. 1188
granulated form, Soldado Rock, K. 2855, C 31126, $\times 17$.
- Fig. 17 *Operculinoides trinitatis* (Nuttall) p. 1188
smooth form, Point Bontour, St. 63, C 31253, $\times 17$.
- Fig. 18 *Operculinoides spiralis* Caudri, holotype p. 1189
Soldado Rock, K. 2651, C 31092, $\times 17$.

Plate 9

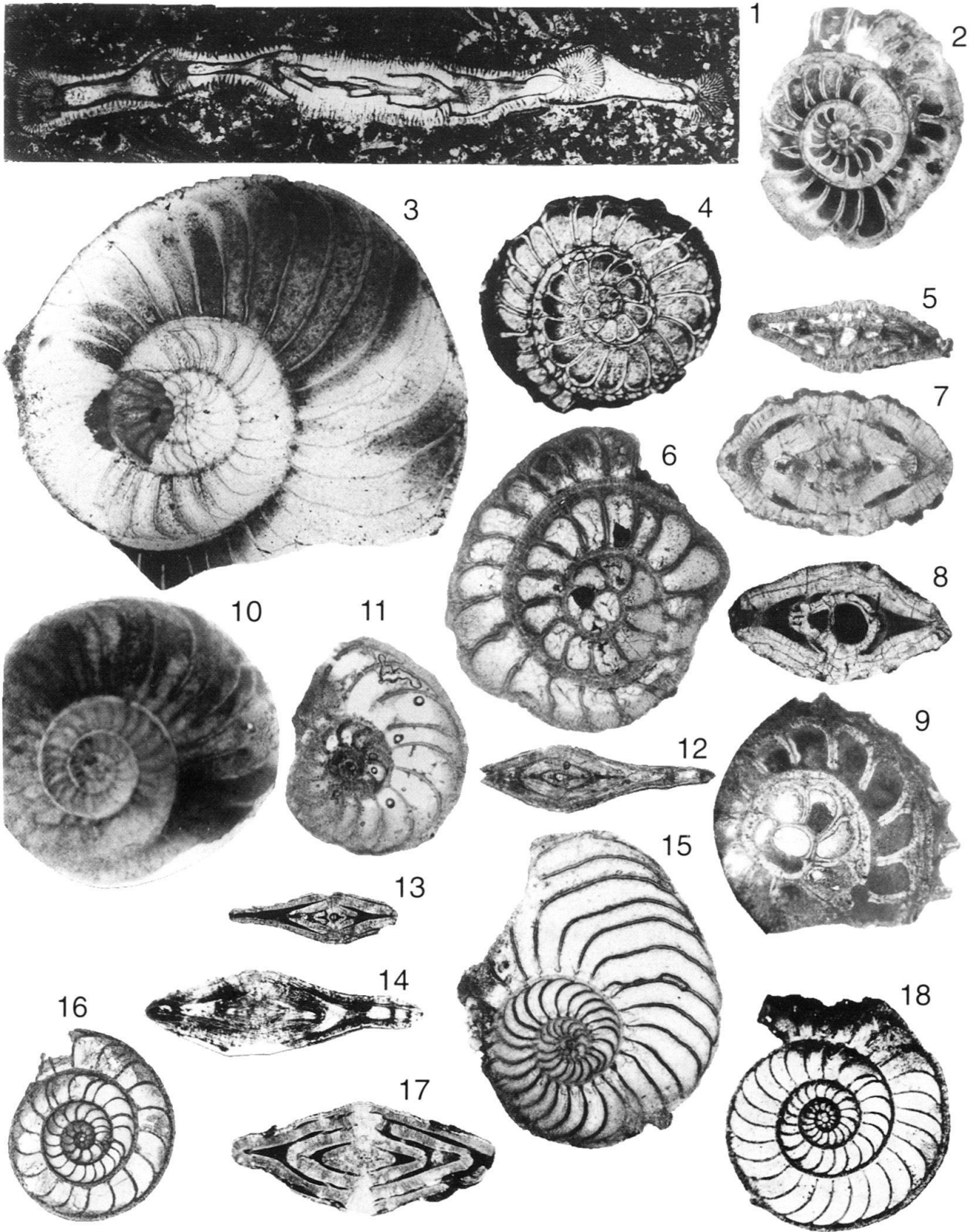


Plate 10

- | | | |
|------------|---|---------|
| Fig. 1 | <i>Operculinoides kugleri</i> Vaughan & Cole
Point Bontour, St. 63, C 36040, × 17. | p. 1188 |
| Fig. 2 | <i>Nummulites striatoreticulatus</i> (Rutten)
Point Bontour, St. 63, C 35962, × 17. | p. 1192 |
| Fig. 3 | <i>Operculinoides kugleri</i> Vaughan & Cole
Point Bontour, St. 63, C 36085, × 17. | p. 1188 |
| Fig. 4 | Random section through the <i>Operculina</i> -limestone
on the Coora-Quinam Road, including one of the rare <i>Lepidocyclinas</i> , C 36071, × 9. | |
| Fig. 5–6 | <i>Operculinoides semmesi</i> Vaughan & Cole
Morne Diablo Quarry, K. 2667, C 35957 (Fig. 5), C 36086 (Fig. 6), × 17. | p. 1190 |
| Fig. 7–9 | <i>Operculinoides semmesi ciperensis</i> Vaughan & Cole
Cipero Coast, Cd. 26, C 35956 (Fig. 7), C 36129 (Fig. 8), C 36130 (Fig. 9), × 17. | p. 1190 |
| Fig. 10–12 | <i>Operculinoides cojimarensis</i> (Palmer), B-form
Morne Diablo Quarry, K.S. 122, C 36031 (Fig. 10), C 36087 (Fig. 11), C 36088
(Fig. 12), × 17. | p. 1191 |
| Fig. 13–14 | <i>Operculinoides bullbrooki</i> Vaughan & Cole
Morne Diablo Quarry, E.L. 1178, C 35953 (Fig. 13), C 36126 (Fig. 14), × 17. | p. 1191 |
| Fig. 15–17 | <i>Planorbulinella trinitatensis</i> (Nuttall)
Biche Quarry, C 36057 (Fig. 15), C 36056 (Fig. 16), C 36127 (Fig. 17), × 17. | p. 1237 |
| Fig. 18 | <i>Orbitolina</i> -limestone
Quinam, Hg. 769, C 36070, × 9. | |
| Fig. 19 | <i>Operculinoides suteri</i> Caudri, n. sp.
exceptionally large specimen, San Fernando Railway Station, Cd. 208, C 36029, × 17. | p. 1189 |

Plate 10

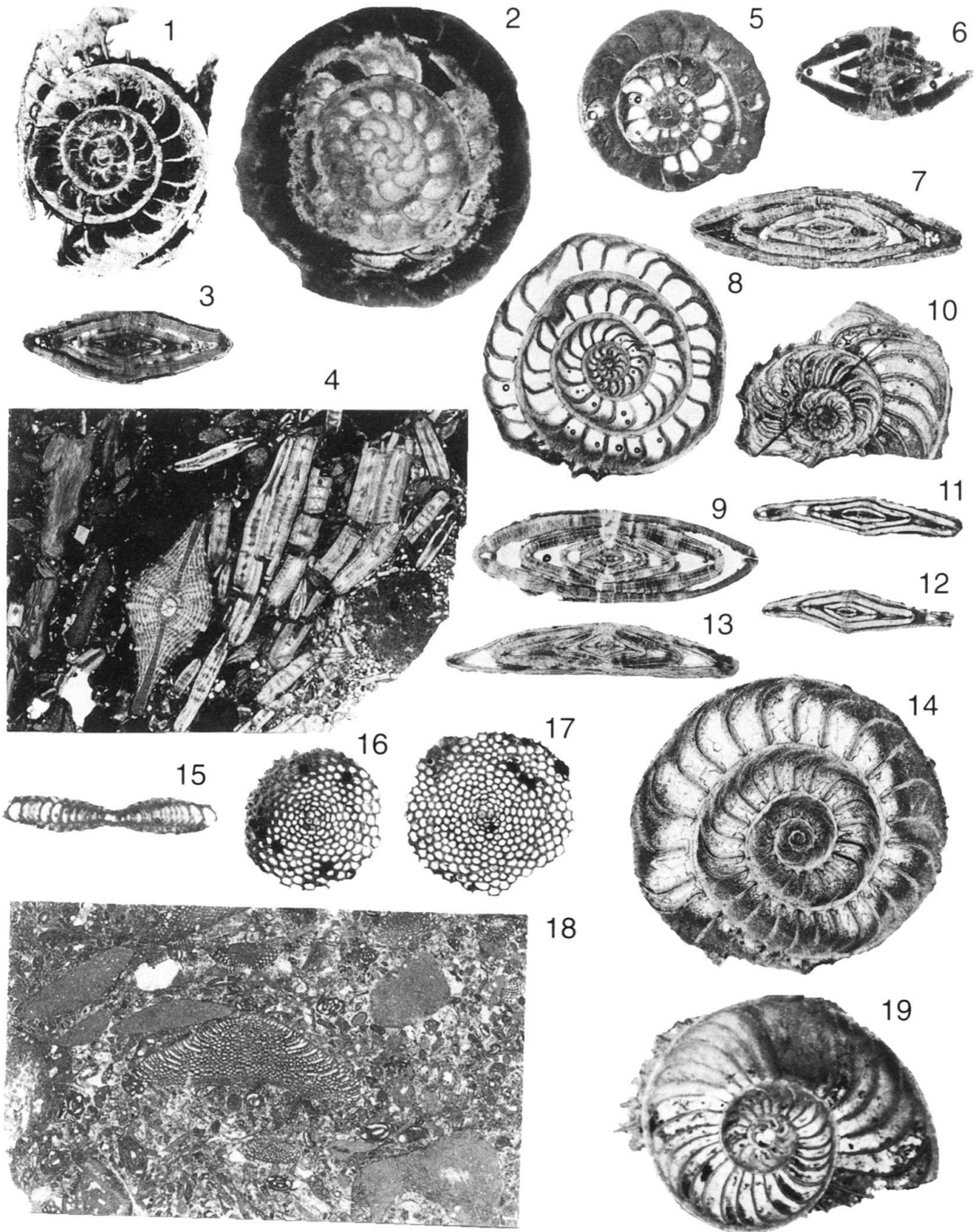


Plate 11

- Fig. 1 *Operculinoides tuxpamensis* (Thalmann) Cole p. 1192
Biche Quarry, C 36058, × 17.
- Fig. 2 *Operculinoides tamanensis* Vaughan & Cole, topohyle p. 1192
Central Range, Tamana-Carmichael Road, K.R. 7541, C 36047, × 17.
- Fig. 3–4 *Operculinoides tuxpamensis* (Thalmann) Cole p. 1192
without central plug, Biche Quarry, C 35959 (Fig. 3), C 36059 (Fig. 4), × 17.
- Fig. 5–6 *Operculinoides tamanensis* Vaughan & Cole p. 1192
topohyle, with central plug, Tamana-Carmichael Road, K.R. 7541, C 36048 (Fig. 5), C 36090 (Fig. 6), × 17.
- Fig. 7 *Operculinoides tamanensis* Vaughan & Cole p. 1192
topohyle, with heterosteginoid subdivisions, Tamana-Carmichael Road, K.R. 7541, C 36089, × 17.
- Fig. 8 *Heterostegina antillea* Cushman
Charuma, A.E.G. 5183A, C 35963, × 17.

Plate 11

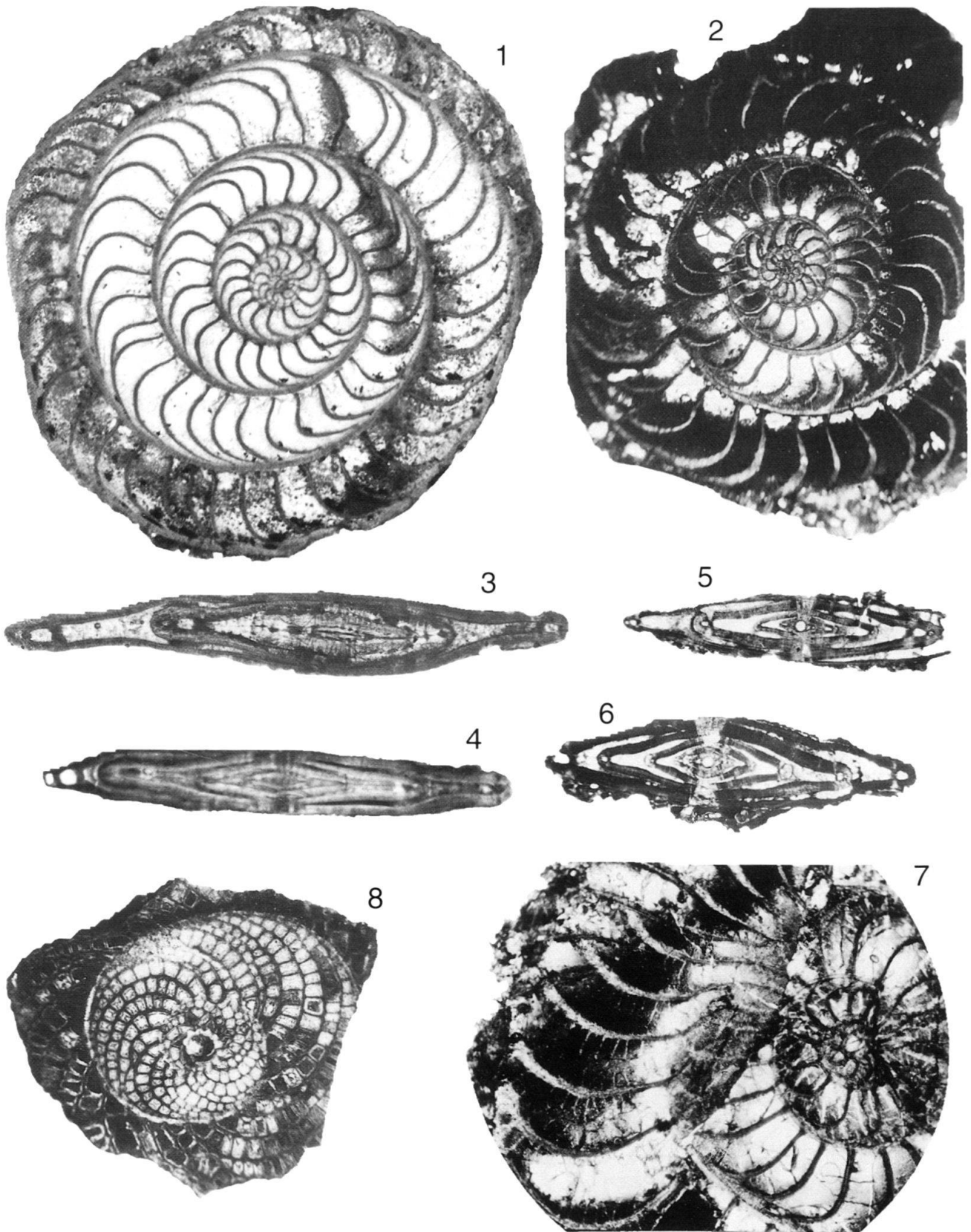


Plate 12

- Fig. 1 *Actinosiphon barbadensis* (Vaughan) p. 1210
Point Bontour, St. 63 (reworked), C 31255, × 34.
- Fig. 2 *Neodiscocyclina fonslacertensis* (Vaughan) p. 1204
Lizard Springs, Mky 102b III, U.S.N.M., Washington, × 34.
- Fig. 3 *Hexagonocyclina inflata* Caudri p. 1203
Point Bontour, St. 67 (reworked), C 31256, × 34.
- Fig. 4 *Hexagonocyclina inflata* Caudri, holotype p. 1203
Point Bontour, Cd. 18 (reworked), after Caudri 1948, Pl. 74:5, × 34.
- Fig. 5 *Hexagonocyclina inflata* Caudri p. 1203
Point Bontour, Cd. 18 (reworked), after Caudri 1948, Pl. 73:6, × 34.
- Fig. 6 *Neodiscocyclina aguerreveri* (Caudri) p. 1203
Point Bontour, Cd. 18 (reworked), C 36009, × 34.
- Fig. 7 *Neodiscocyclina grimsdalei* (Vaughan & Cole) p. 1203
Soldado Rock, K. 2950, U.S.N.M., Washington, × 34.
- Fig. 8 *Neodiscocyclina anconensis* (Barker) p. 1204
Biche Calyx 50A, 232–233 feet, C 36008, × 34.
- Fig. 9 *Hexagonocyclina meandrica* Caudri p. 1202
Lizard Springs, Mky 102b III, U.S.N.M., Washington, ¥ 34.
- Fig. 10 *Hexagonocyclina meandrica* Caudri p. 1202
Soldado Rock, K. 2950, C 31134, × 34.
- Fig. 11 *Neodiscocyclina barkeri* (Vaughan & Cole) p. 1205
Soldado Rock, K. 2951, C 31146, × 34.
- Fig. 12 *Stenocyclina* sp. (fragment)
Dunmore Hill, Ha. 215, C 36068 (different fragment), × 34.
- Fig. 13 *Neodiscocyclina anconensis* (Barker) p. 1204
Biche Calyx 50A, 232–233 feet, C 36091, ¥× 34.
- Fig. 14–15 *Neodiscocyclina caudriae* (Vaughan) p. 1205
Lizard Springs, Mky 102b III, U.S.N.M., Washington, × 36.
- Fig. 16 *Neodiscocyclina barkeri* (Vaughan & Cole) p. 1205
with polygonal equatorial arrangement, Soldado Rock, K. 2951, C 31137, × 34.
- Fig. 17 *Neodiscocyclina anconensis* (Barker) p. 1204
Biche Calyx 50A, 232–233 feet, C 36092, × 34.

Plate 12

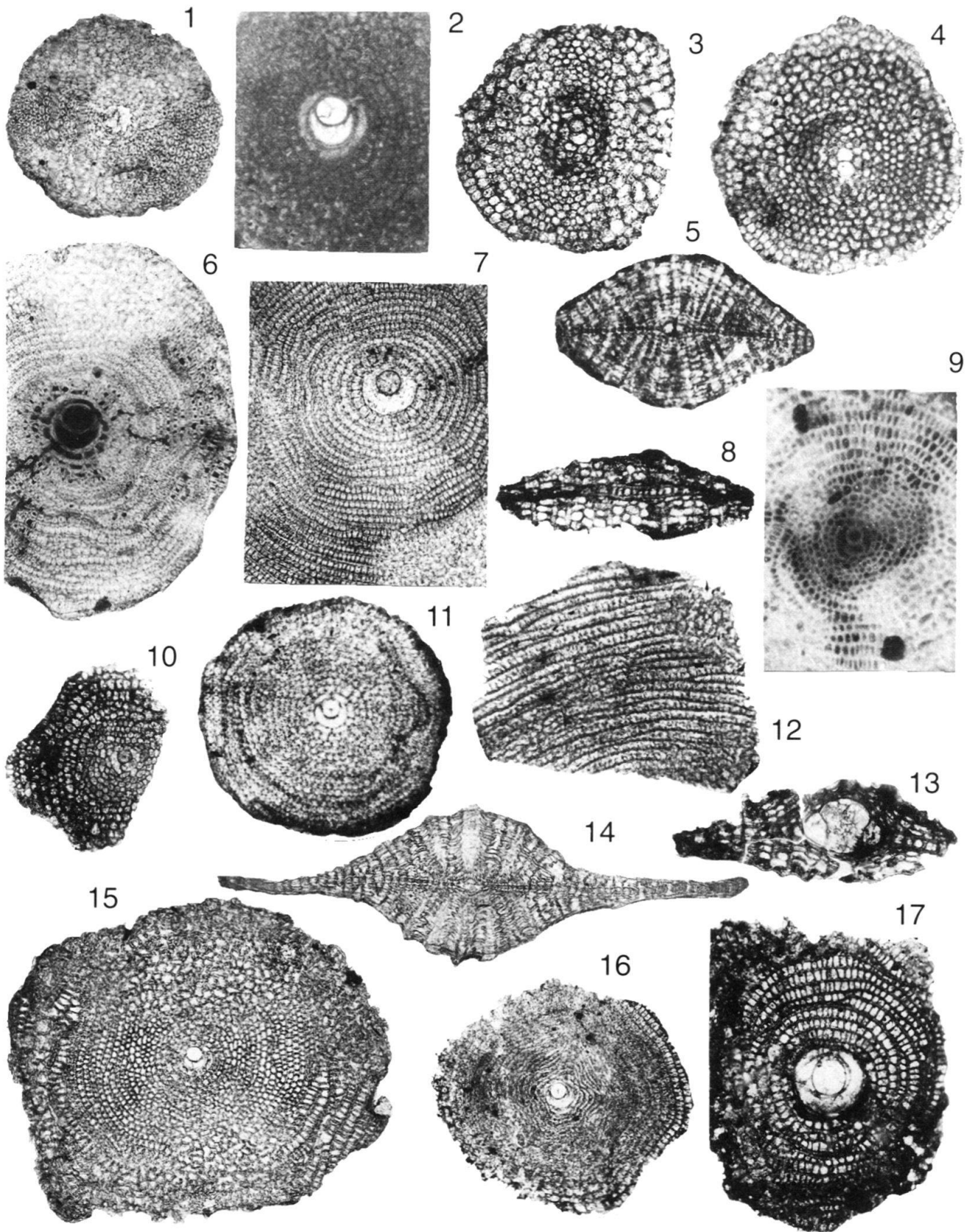


Plate 13

- Fig. 1 *Asterocyclina soldadensis* Caudri p. 1209
Navette area, R.M. 1337, C 35949, $\times 9$.
- Fig. 2 *Asterocyclina asterisca* (Guppy), typical nepiont p. 1207
Soldado Rock, K. 2854, same specimen as Fig. 4, probably in Shell's collection in
the Hague, $\times 68$.
- Fig. 3 *Asterocyclina asterisca* (Guppy) p. 1207
Soldado Rock, K. 2854, C 31120, $\times 17$.
- Fig. 4 *Asterocyclina asterisca* (Guppy) p. 1207
see Fig. 2, Soldado Rock, K. 2854, probably in Shell's collection in the Hague, $\times 17$.
- Fig. 5–6 *Asterocyclina soldadensis* Caudri p. 1209
Soldado Rock, K. 2651, C 31095 (Fig. 5), C 31096 (Fig. 6), $\times 17$.
- Fig. 7 *Asterocyclina soldadensis* Caudri p. 1209
embryonic and perieubryonic chambers, Soldado Rock, K. 2651, C 31094, $\times 34$.
- Fig. 8 *Asterocyclina ruteni* Vaughan p. 1208
Point Bontour, St. 46, C 36063, $\times 34$.
- Fig. 9 *Neodiscocyclina bullbrooki* (Vaughan & Cole), A-form p. 1204
Point Bontour, St. 67 (reworked), C 36010, $\times 34$.
- Fig. 10 *Asterocyclina vaughani* (Cushman) (type material) p. 1208
Point Bontour, C 35950, $\times 9$.

Plate 13

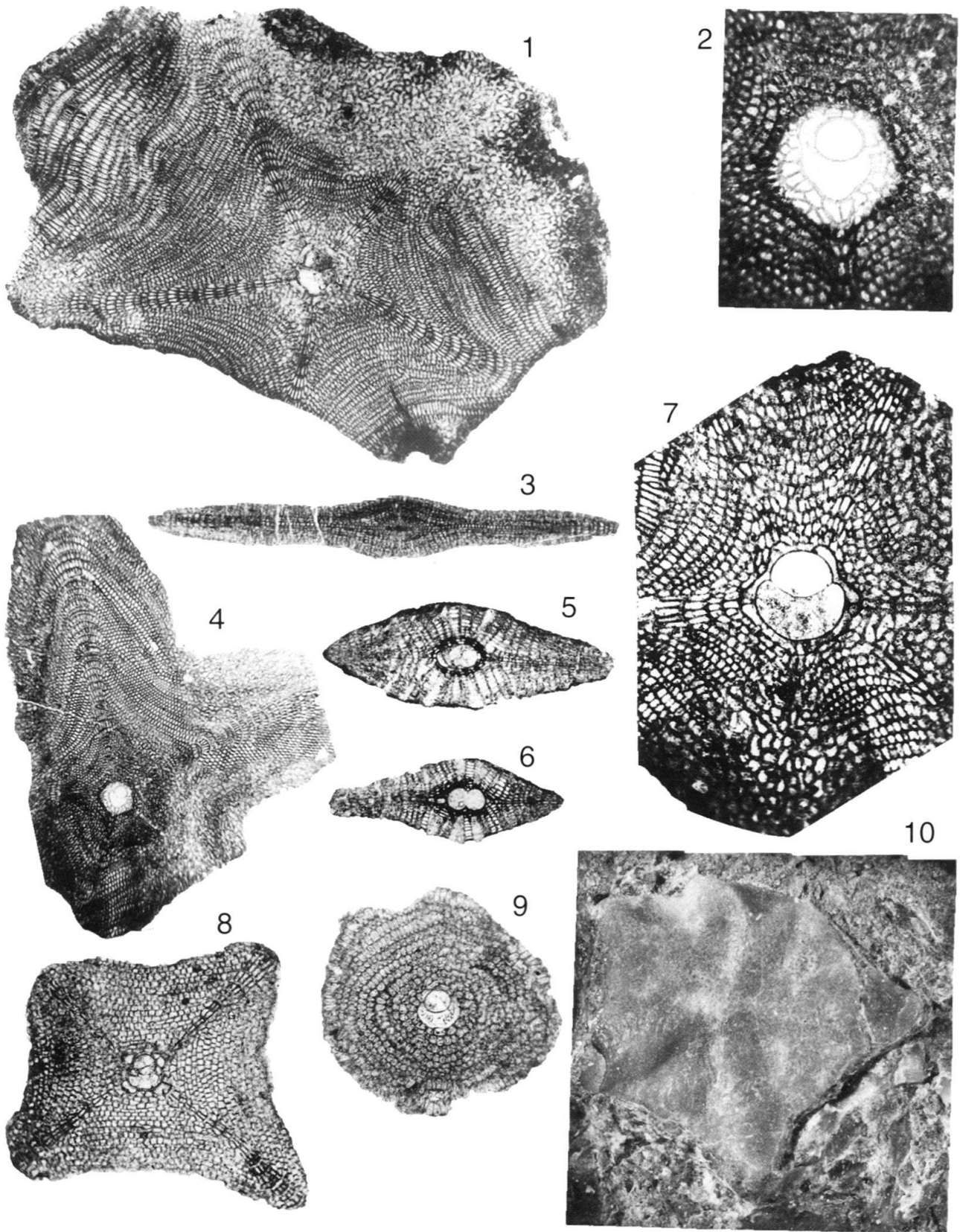


Plate 14

- Fig. 1 *Helicolepidina* cf. *nortoni* Vaughan, B-form p. 1233
Charuma, A.E.G. 1580A, C 35929, × 30.
- Fig. 2 *Helicolepidina* cf. *nortoni* Vaughan, A-form p. 1233
Vistabella Calyx 59, 500–510 feet, C 35928, × 30.
- Fig. 3, 6–8 *Lepidocyclina* (*Polylepidina*) *nitida* Caudri, n. sp. p. 1215
horizontal sections, Farallon Rock, coll. Stainforth, Renz & Rutsch 1939,
C 36080 (Fig. 3), C 36081–36083 (Fig. 6–8), × 30.
- Fig. 4–5 *Lepidocyclina* (*Polylepidina*) *nitida* Caudri, n. sp. p. 1215
vertical sections, Farallon Rock, same locality, C 35931 (Fig. 4), C 36084 (Fig. 5), × 30.
- Fig. 9 *Lepidocyclina* (*Polylepidina*)? *vichayalensis* L. Rutten p. 1217
Point Bontour, St. 63, C 35932, × 30.
- Fig. 10 *Lepidocyclina* (?*Polylepidina*) *proteiformis* Vaughan p. 1217
Point Bontour, St. 63, C 35935, × 30.
- Fig. 11 *Lepidocyclina* (*Polylepidina*) *vichayalensis* L. Rutten p. 1217
A-form, Mount Moriah near Dr. Krogh's house (note stolon system), M. 12923,
C 35934, × 30.
- Fig. 12 *Lepidocyclina* (*Polylepidina*) *vichayalensis* L. Rutten p. 1217
B-form, Charuma, A.E.G. 1580A, C 35933, × 30.

Plate 14

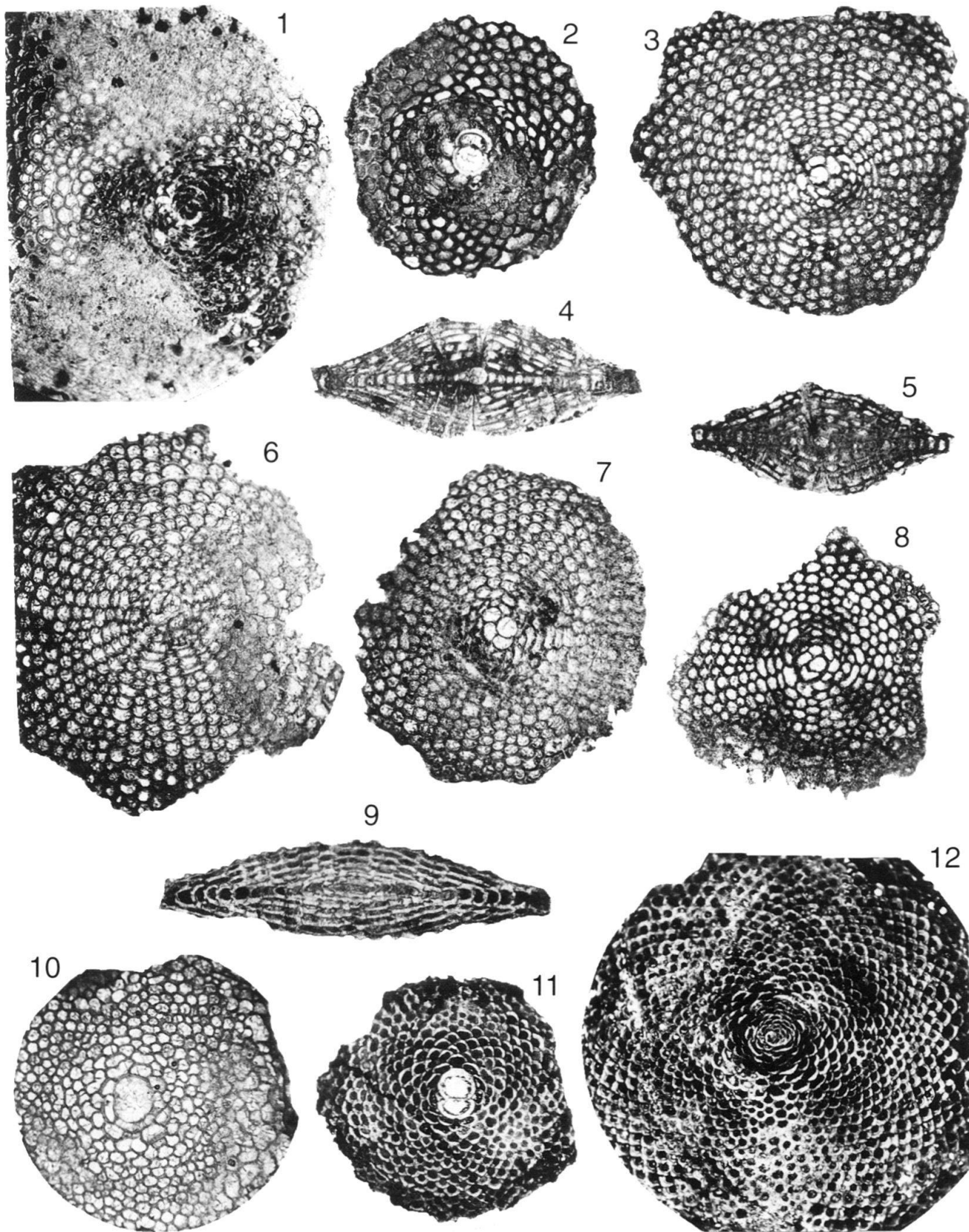


Plate 15

- Fig. 1 *Lepidocyclina pustulosa* (H. Douvillé), s. s. p. 1218
Soldado Rock, J.S. 1950, C 31245, × 17.
- Fig. 2 *Lepidocyclina pustulosa compacta* Caudri p. 1219
holotype, Point Bontour, St. 63, C 31252, × 17.
- Fig. 3 *Lepidocyclina pustulosa trinitatis* (H. Douvillé) p. 1219
Soldado Rock, K. 2854, C 31113, × 17.
- Fig. 4 *Lepidocyclina peruviana* Cushman p. 1217
with split equatorial layer, Soldado Rock, K. 1500, C 31079, × 17.
- Fig. 5 *Lepidocyclina pustulosa* (H. Douvillé) p. 1218
with small chambers in the periphery, Cush River, coll. Lehner, × 17.
- Fig. 6 *Lepidocyclina peruviana* Cushman p. 1217
Soldado Rock, K. 2951B, C 31152, × 17.
- Fig. 7 *Lepidocyclina pustulosa tobleri* (H. Douvillé) p. 1219
with double completely abnormal embryonic apparatus, Vistabella Quarry, C 36002, × 17.
- Fig. 8 *Lepidocyclina pustulosa* (H. Douvillé), s. s. p. 1218
Soldado Rock, Rz. 251, C 31230, × 17.
- Fig. 9 *Lepidocyclina pustulosa trinitatis* (H. Douvillé) p. 1219
Soldado Rock, K. 2854, C 31111, × 17.
- Fig. 10 *Helicolepidina spiralis* Tobler p. 1233
vertical section, Point Bontour, St. 63, C 35926, × 17.
- Fig. 11 *Helicolepidina spiralis* Tobler p. 1233
section through the initial spiral (same specimen as Pl. 4:1, compare with Pl. 4:2),
Point Bontour, St. 63, C 35925, × 50.
- Fig. 12 *Lepidocyclina pustulosa tobleri* (H. Douvillé) p. 1219
specimen with regular embryonic chambers, Vistabella Quarry, C 36093, × 17.

Plate 15

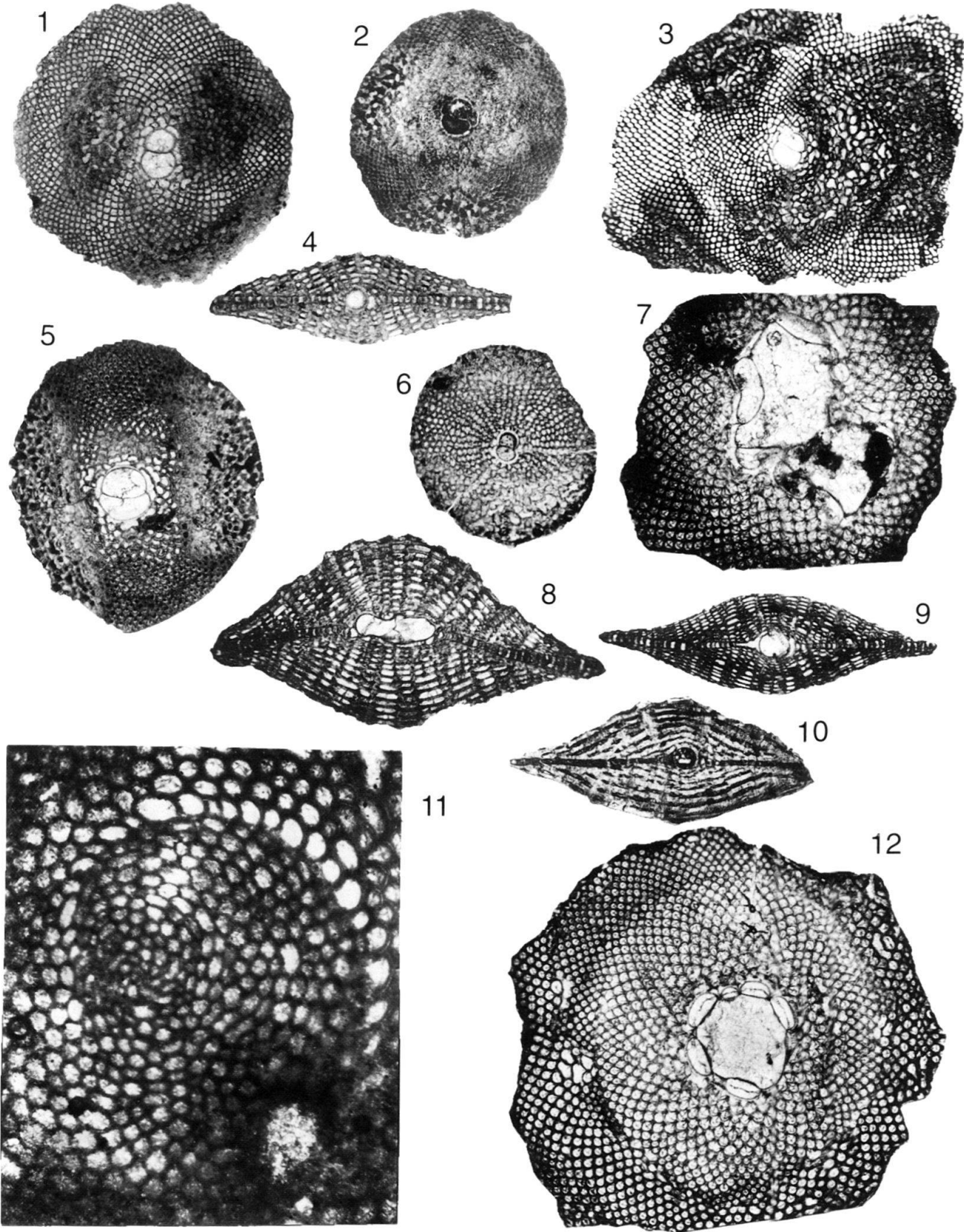
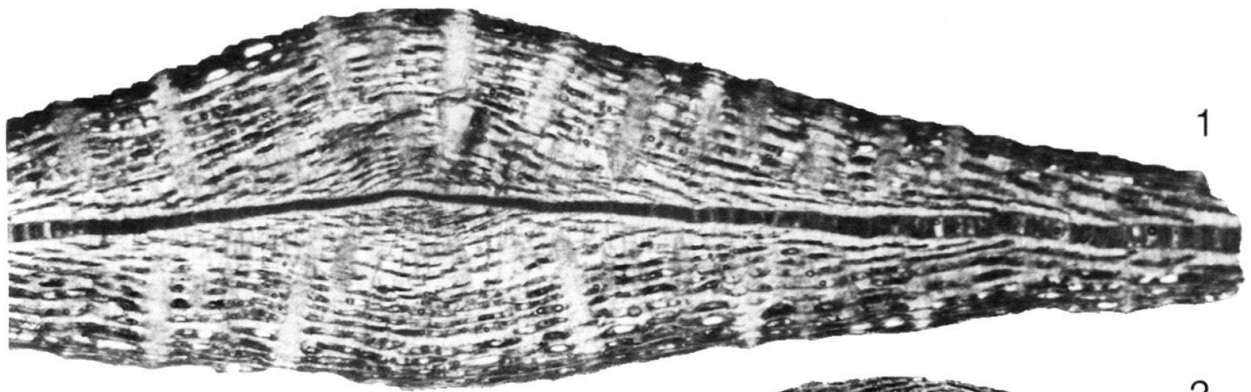


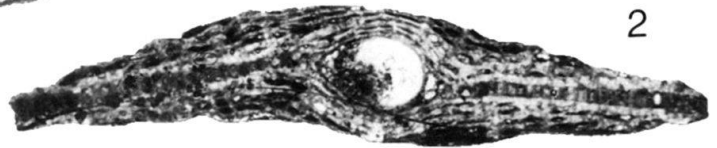
Plate 16

- Fig. 1-4 *Lepidocyclina spatiosa* Caudri, A- and B-forms p. 1220
Navette area, R.M. 1337, C 35987 (Fig. 1), C 35988 (Fig. 2), C 35989 (Fig. 3),
C 35990 (Fig. 4), × 17.
- Fig. 5-7 *Lepidocyclina sanfernandensis* Vaughan & Cole p. 1222
typical form (underdeveloped form, compare with the forma depressata Pl.
3:1-2, 7), Vistabella Reservoir, E.L. 1207, C 35980 (Fig. 5), C 36128 (Fig. 6),
C 35981 (Fig. 7), × 17.

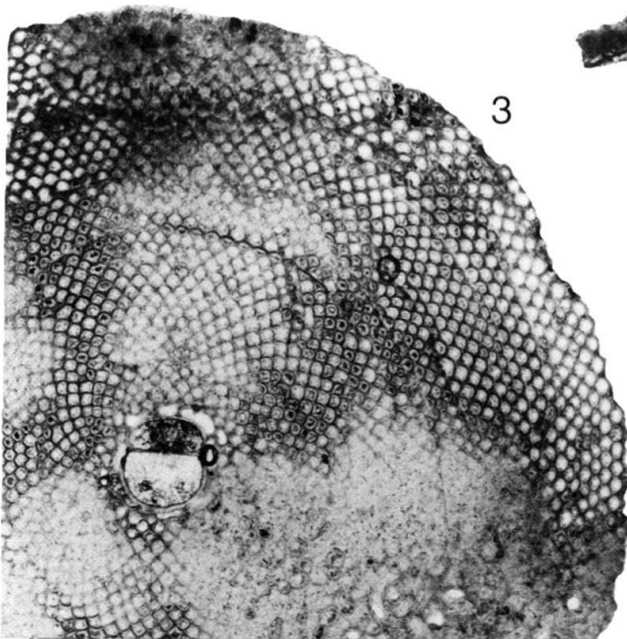
Plate 16



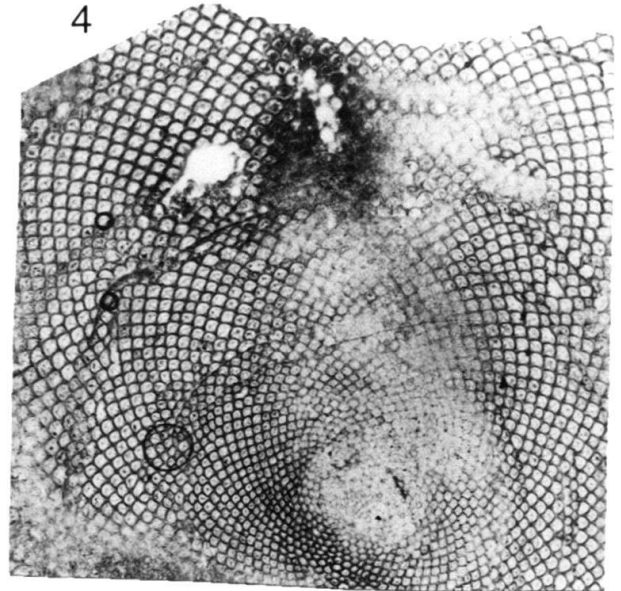
1



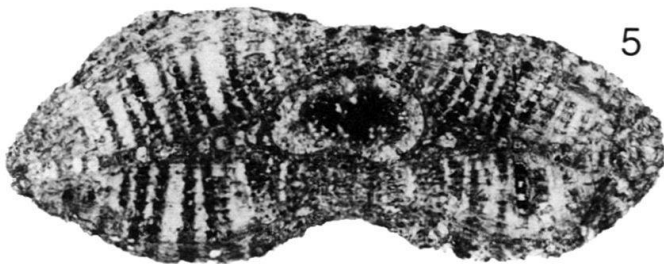
2



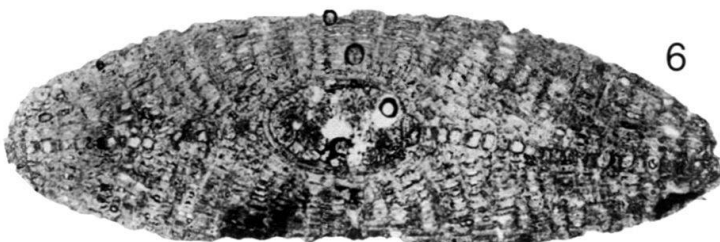
3



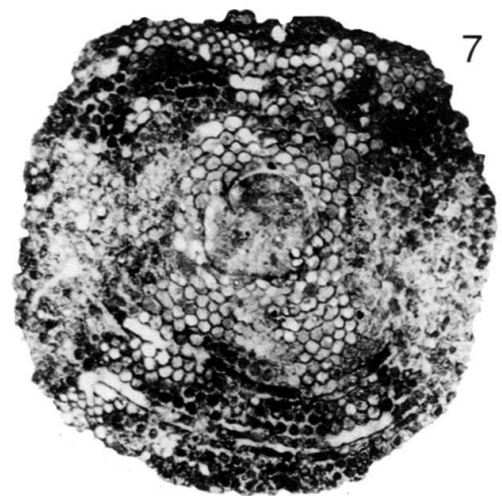
4



5



6



7

Plate 17

- | | | |
|------------|--|---------|
| Fig. 1–2 | <i>Lepidocyclina yurnagunensis</i> (Cushman)
Cipero Coast, C.S. 11, × 34 and × 17. | p. 1220 |
| Fig. 3, 7 | <i>Lepidocyclina yurnagunensis</i> (Cushman)
Cipero Coast, C.S. 11, × 17 (Fig. 3), × 34 (Fig. 7). | p. 1220 |
| Fig. 4, 6 | <i>Lepidocyclina subglobosa</i> Nuttall
Vistabella, Calyx 59, 380–390 feet, × 17 (Fig. 4), × 34 (Fig. 6). | p. 1221 |
| Fig. 5, 9 | <i>Lepidocyclina subglobosa</i> Nuttall
Vistabella, E.L. 1435, C 35974, × 17 and × 34 (same specimen). | p. 1221 |
| Fig. 8 | <i>Lepidocyclina yurnagunensis</i> (Cushman)
Cipero Coast, Grimsdale 2, C 35970, × 17. | p. 1220 |
| Fig. 10 | <i>Lepidocyclina yurnagunensis marginopsis</i> Vaughan
Cipero Coast, C.S. 11, C 35968, × 17. | |
| Fig. 11 | <i>Lepidocyclina yurnagunensis crassimargo</i> Vaughan
Cipero Coast, Grimsdale 2, C 36094, × 17. | |
| Fig. 12 | <i>Lepidocyclina yurnagunensis</i> (Cushman)
Cipero Coast, Grimsdale 2, × 17. | p. 1220 |
| Fig. 13–15 | <i>Lepidocyclina yurnagunensis</i> (Cushman), B-form
Cipero Coast, Cd. 26, C 35971 (Fig. 13), C 36095–36096 (Fig. 14–15), × 17. | p. 1220 |
| Fig. 16–17 | <i>Lepidocyclina tempanii</i> Vaughan & Cole
Charuma, A.E.G. 4567, C 35976–35977 (Fig. 16–17), × 17. | p. 1222 |

Plate 17

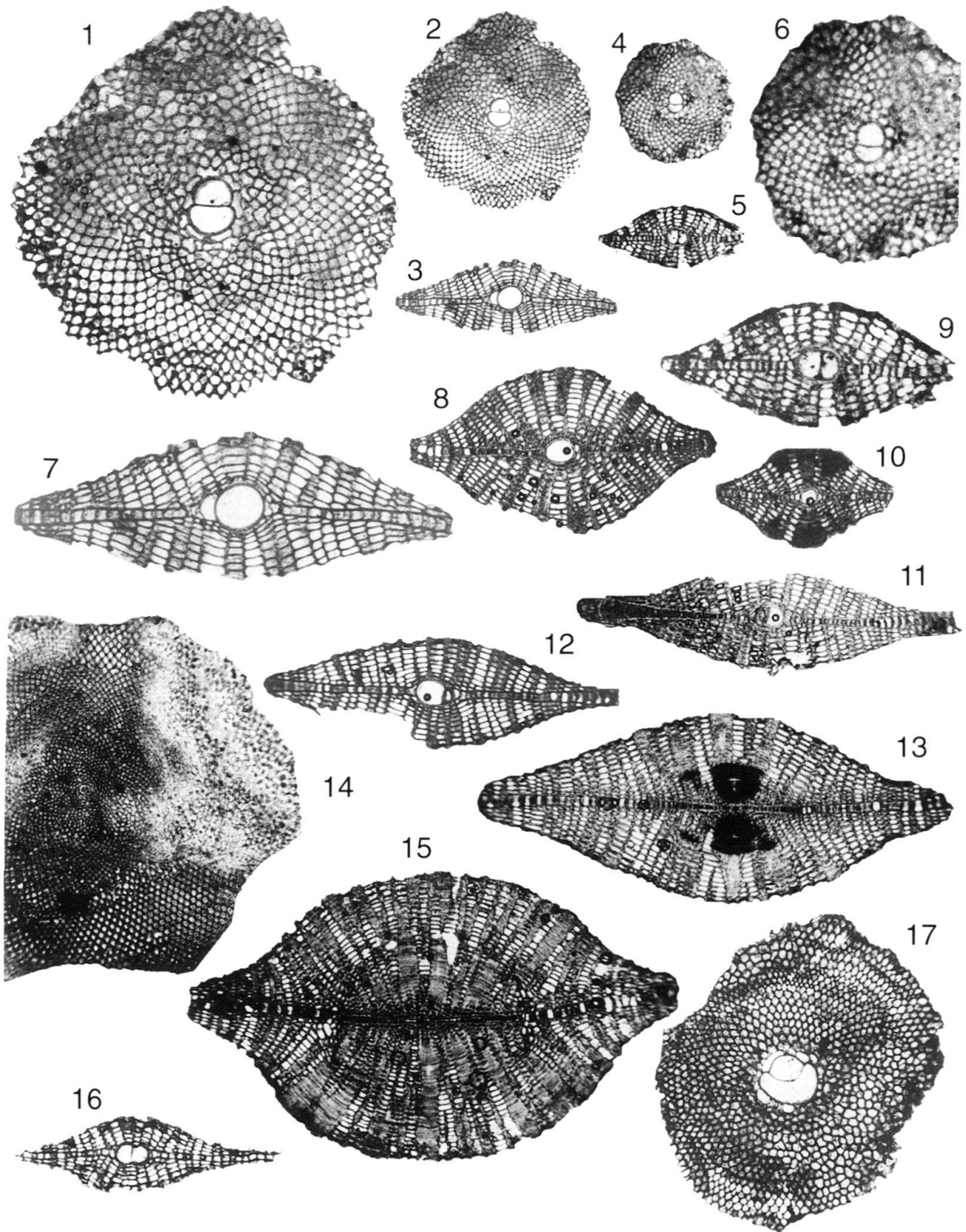


Plate 18

- Fig. 1–2 *Lepidocyclina canellei* Lemoine & R. Douvillé p. 1227
Morne Diablo Quarry, K. 2667, C 35991 (Fig. 1), C 36097 (Fig. 2), × 17.
- Fig. 3–4 *Lepidocyclina pancanalis* Vaughan & Cole p. 1227
Charuma, A.E.G. 1820, C 35994 (Fig. 3), C 36099 (Fig. 4), × 17.
- Fig. 5 *Lepidocyclina parvula* Cushman, A-form p. 1227
Morne Diablo Quarry, K.S. 70, C 35996, × 17.
- Fig. 6–7 *Lepidocyclina parvula* Cushman, B-forms p. 1227
Morne Diablo Quarry, K.S. 21, C 36100–36101 (Fig. 6–7), × 17.
- Fig. 8 *Lepidocyclina giraudi* R. Douvillé p. 1228
Morne Diablo Quarry, K.S. 21, C 35995, × 17.

Plate 18

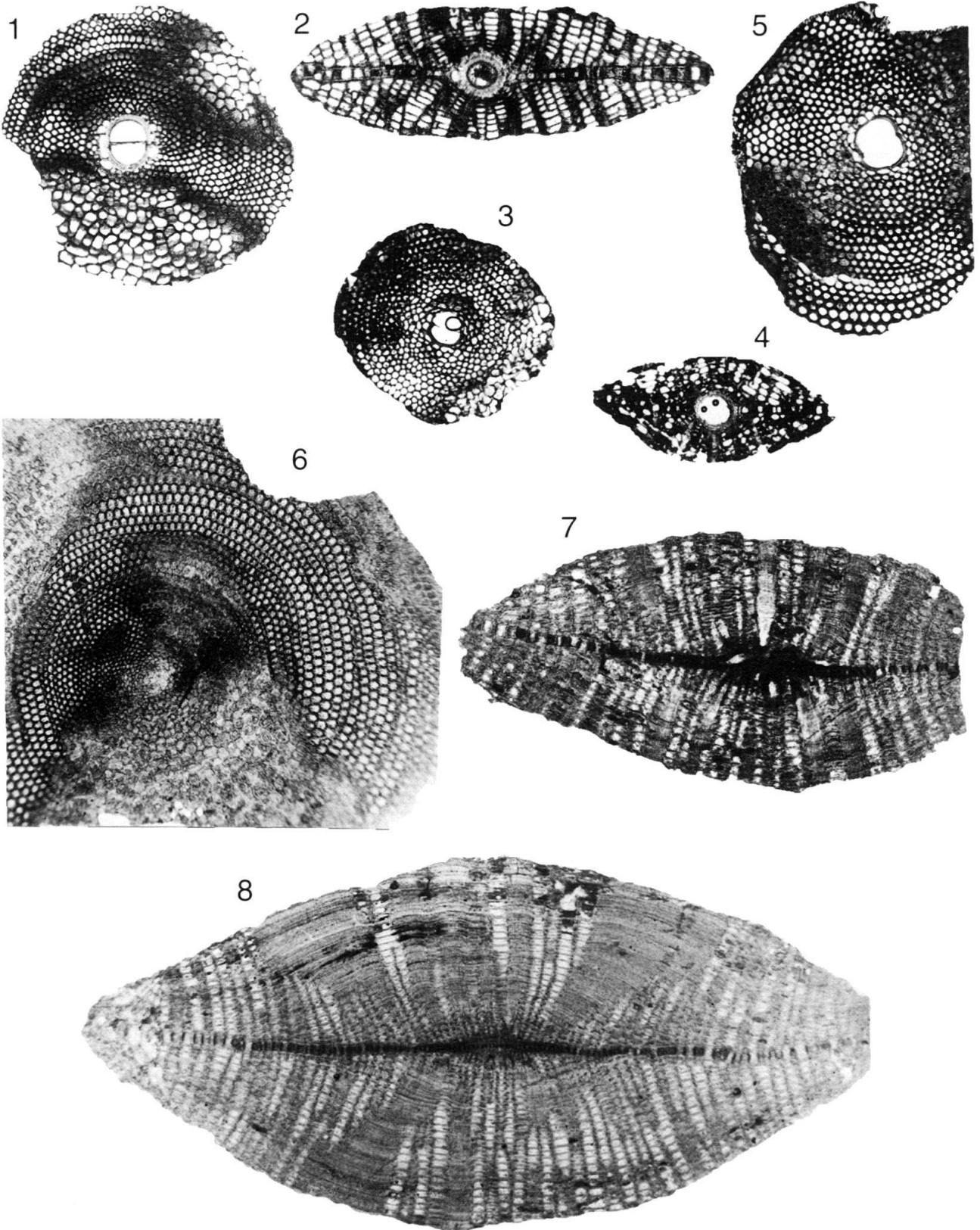


Plate 19

- Fig. 1 *Lepidocyclina giraudi* R. Douvillé (same specimen as Pl. 22:4) p. 1228
Morne Diablo Quarry, K.S. 21, C 36102, × 17.
- Fig. 2 *Lepidocyclina forresti* Vaughan, A-form p. 1226
Morne Diablo Quarry, K.S. 70, C 36004, × 17.
- Fig. 3 *Lepidocyclina forresti* Vaughan, pillarless A-form p. 1226
Morne Diablo Quarry, K.S. 70, C 36103, × 17.
- Fig. 4 *Lepidocyclina forresti* Vaughan, pillared A-form p. 1226
Morne Diablo Quarry, K.S. 70, C 36005, × 17.
- Fig. 5 *Lepidocyclina forresti* Vaughan, pillarless B-form p. 1226
Morne Diablo Quarry, K.S. 70, C 36006, × 17.

Plate 19

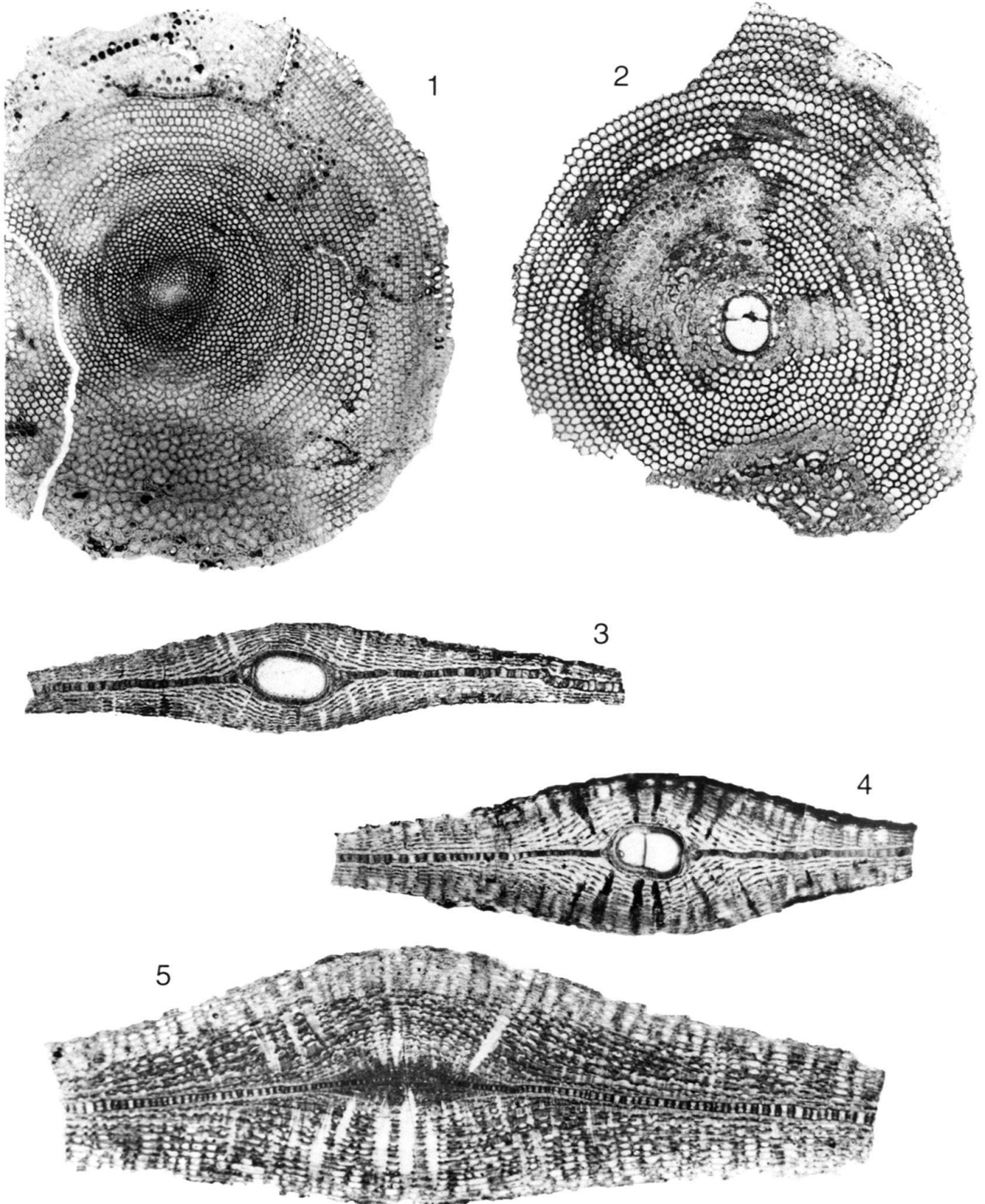
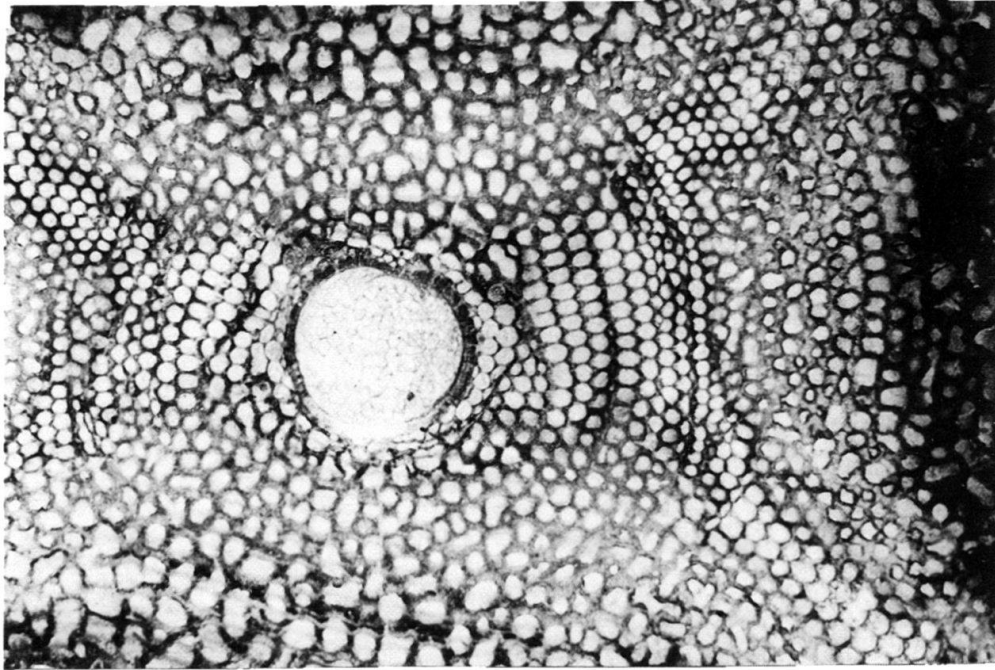


Plate 20

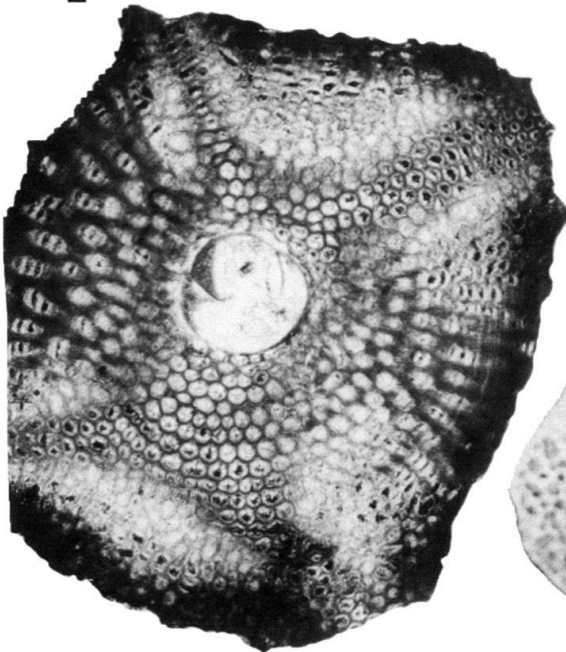
- Fig. 1 *Lepidocyclina undosa* Cushman p. 1224
Kapur Quarry, Lz. 3465, C 35982, × 17.
- Fig. 2 *Lepidocyclina favosa* Cushman p. 1224
Kapur Quarry, Lz. 3465, C 35984, × 17.
- Fig. 3 *Lepidocyclina favosa* Cushman p. 1224
Kapur Quarry, Lz. 3465, C 35983, × 8.

Plate 20

1



2



3

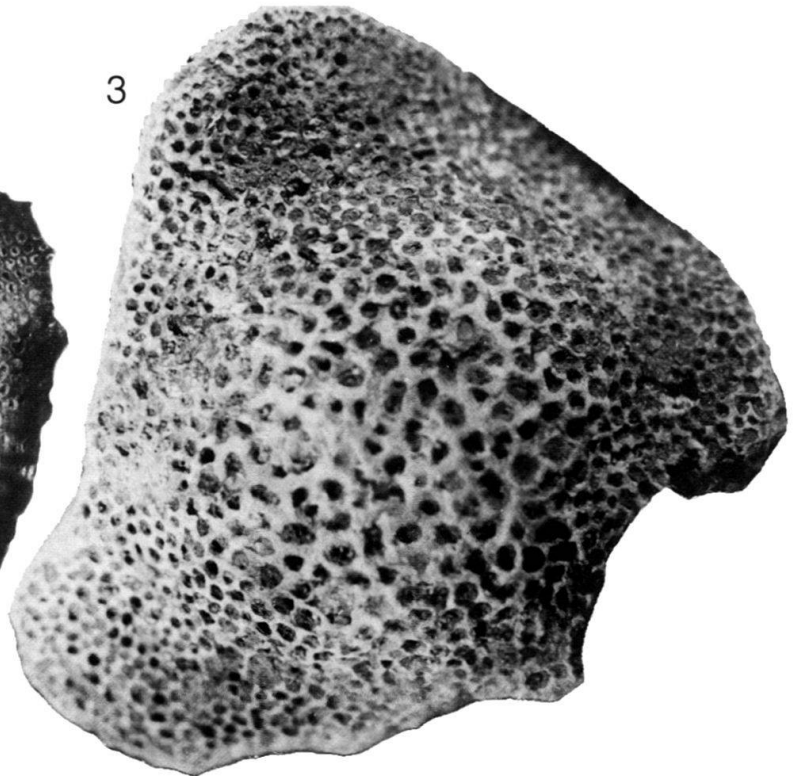


Plate 21

- Fig. 1 *Lepidocyclina undosa* Cushman p. 1224
Kapur Quarry, Lz. 3465, C 36105, $\times 17$.
- Fig. 2 *Lepidocyclina favosa* Cushman p. 1224
Kapur Quarry, Lz. 3465, C 36106, $\times 17$.
- Fig. 3 *Lepidocyclina gigas* Cushman p. 1224
Kapur Quarry, Lz. 3465, C 35985, $\times 8$.

Plate 21

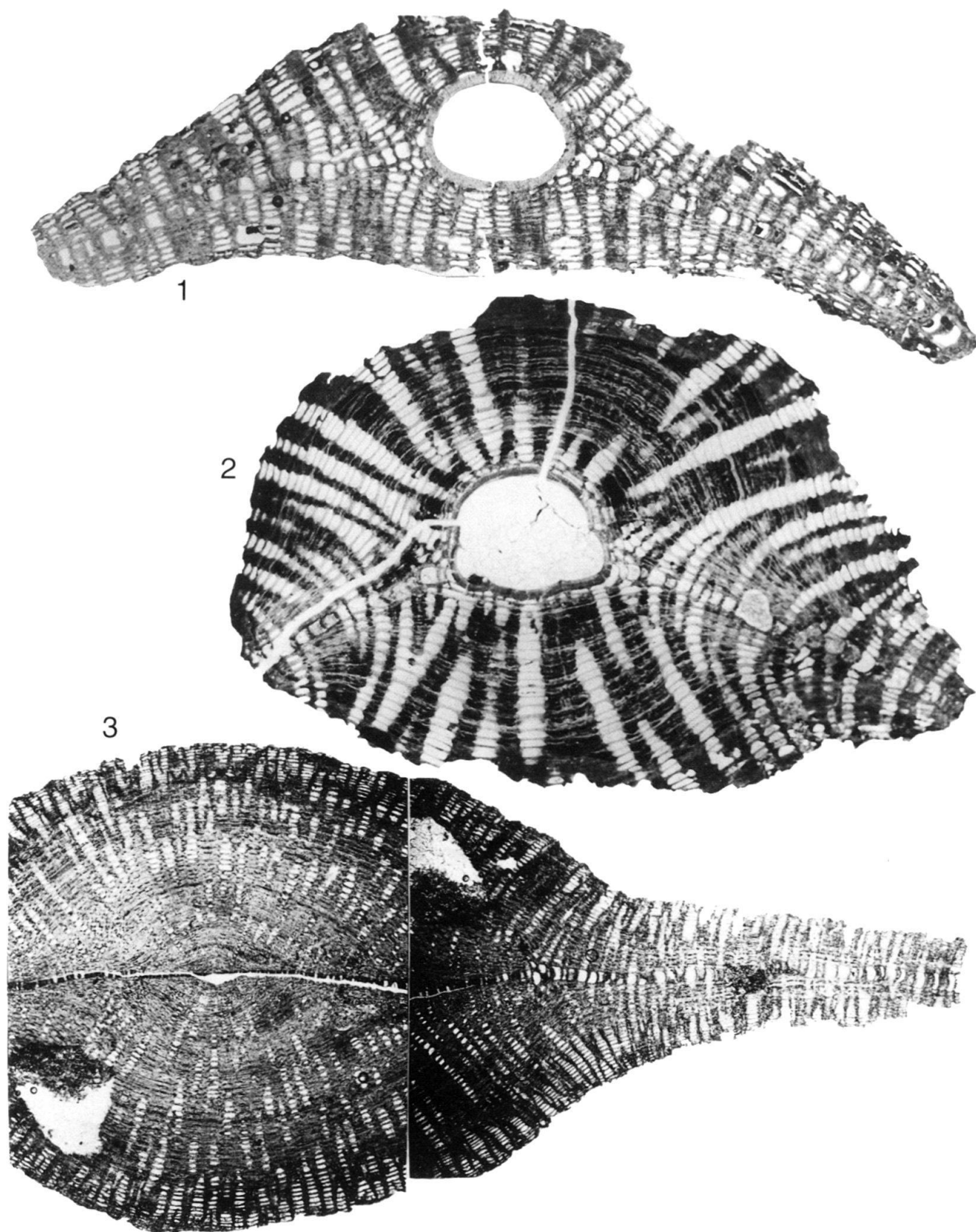
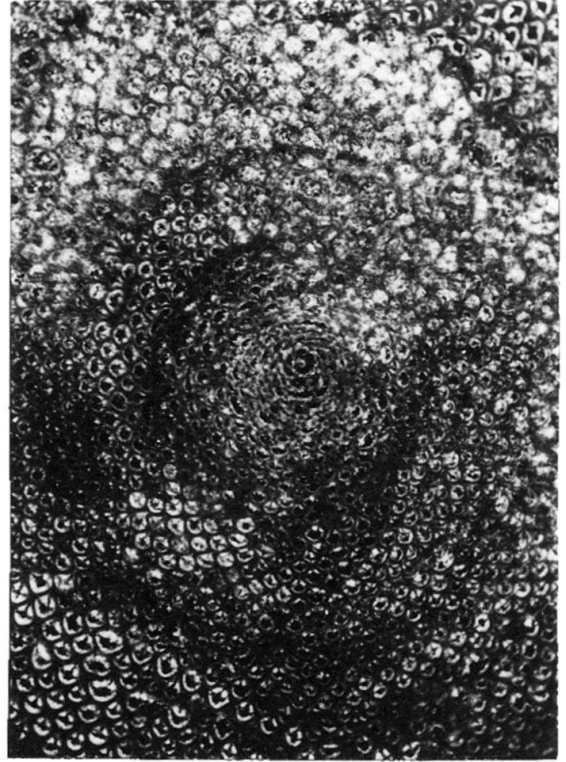
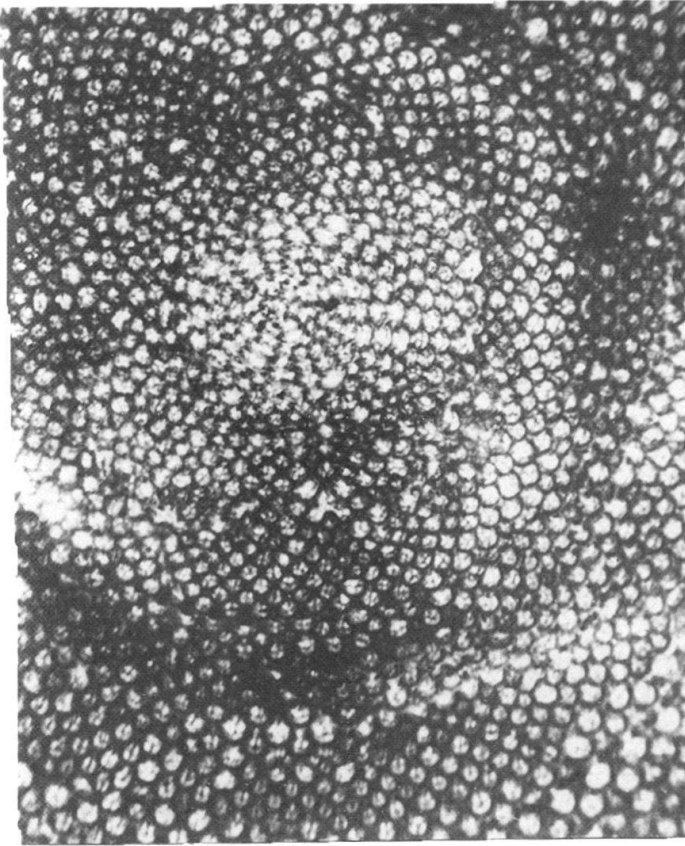


Plate 22

- Fig. 1 *Lepidocyclina pustulosa* H. Douvillé, B-form p. 1218
initial chambers, Vistabella Quarry, C 36001, × 50.
- Fig. 2 *Lepidocyclina pustulosa* H. Douvillé, B-form p. 1218
initial chambers, Navette area, R.M. 1337, C 36000, × 50.
- Fig. 3 *Lepidocyclina forresti* Vaughan, B-form p. 1226
initial chambers (helicolepidinoid nepiont), Morne Diablo Quarry, K.S. 71, C 36007, × 50.
- Fig. 4 *Lepidocyclina giraudi* R. Douvillé p. 1228
initial chambers, Morne Diable Quarry, K.S. 21 (same specimen as Pl. 19:1), C 36102, × 50.

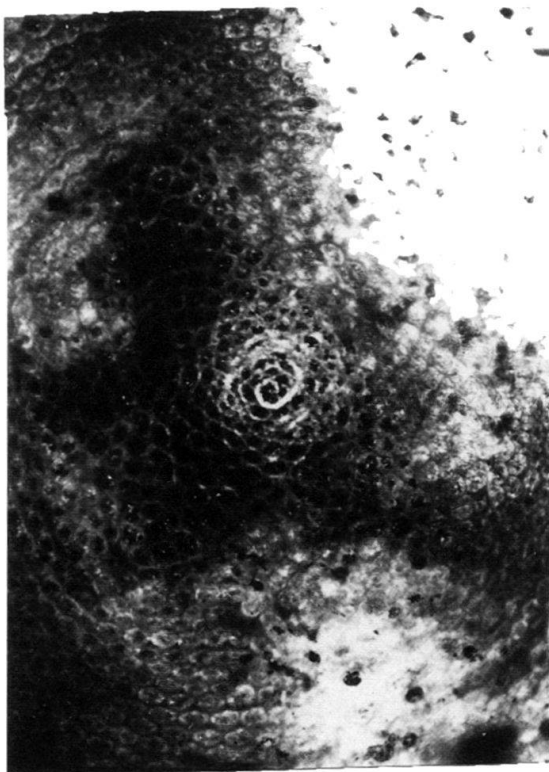
Plate 22



1

2

4



3

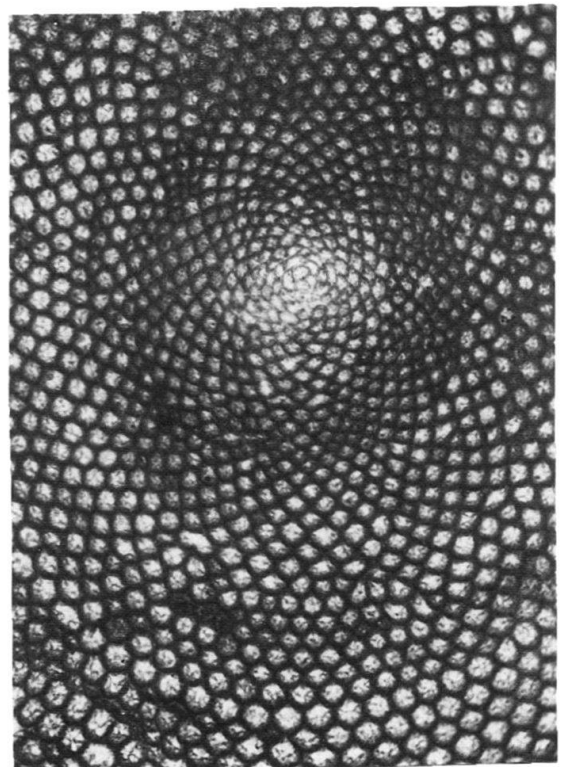
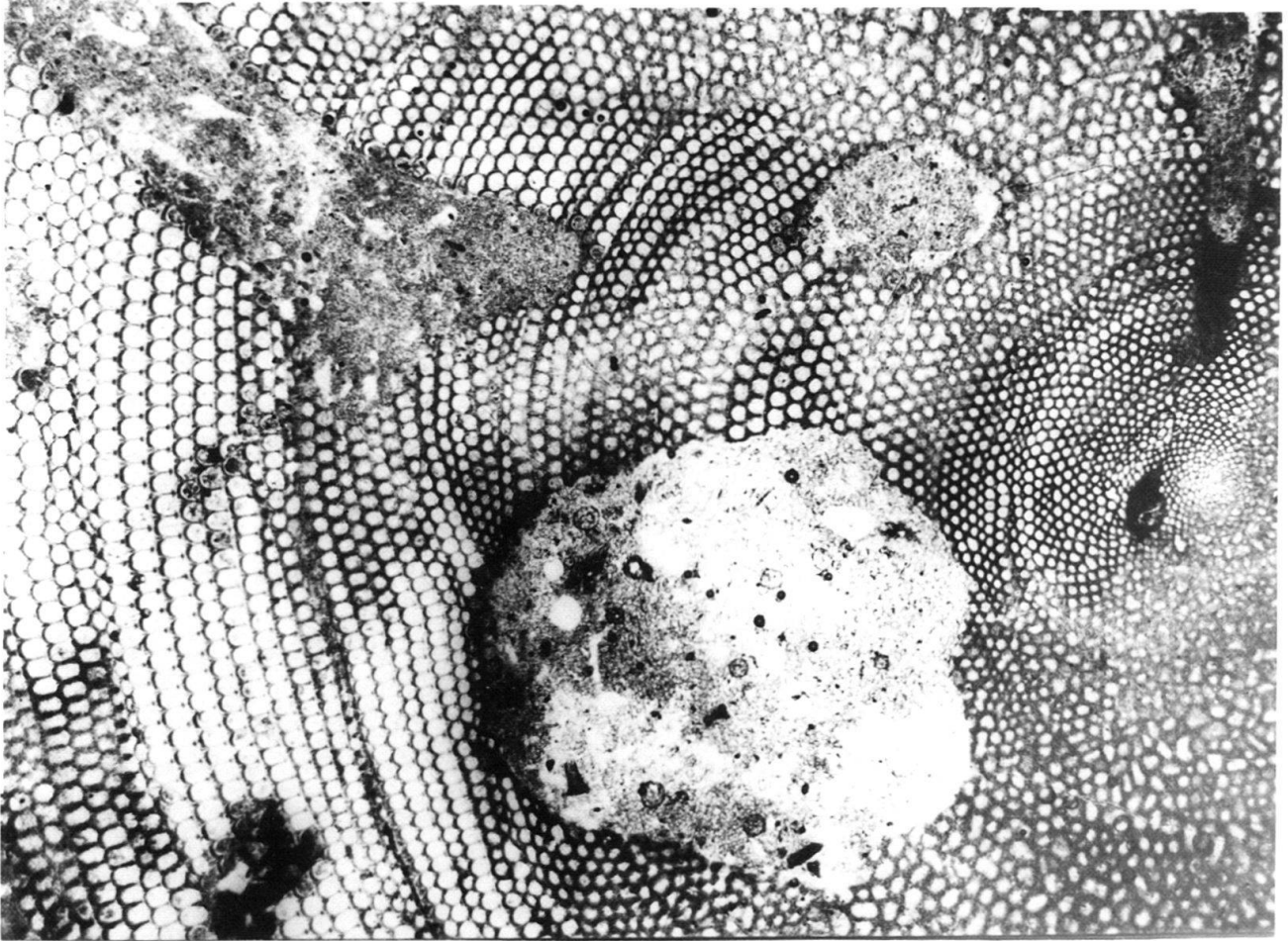


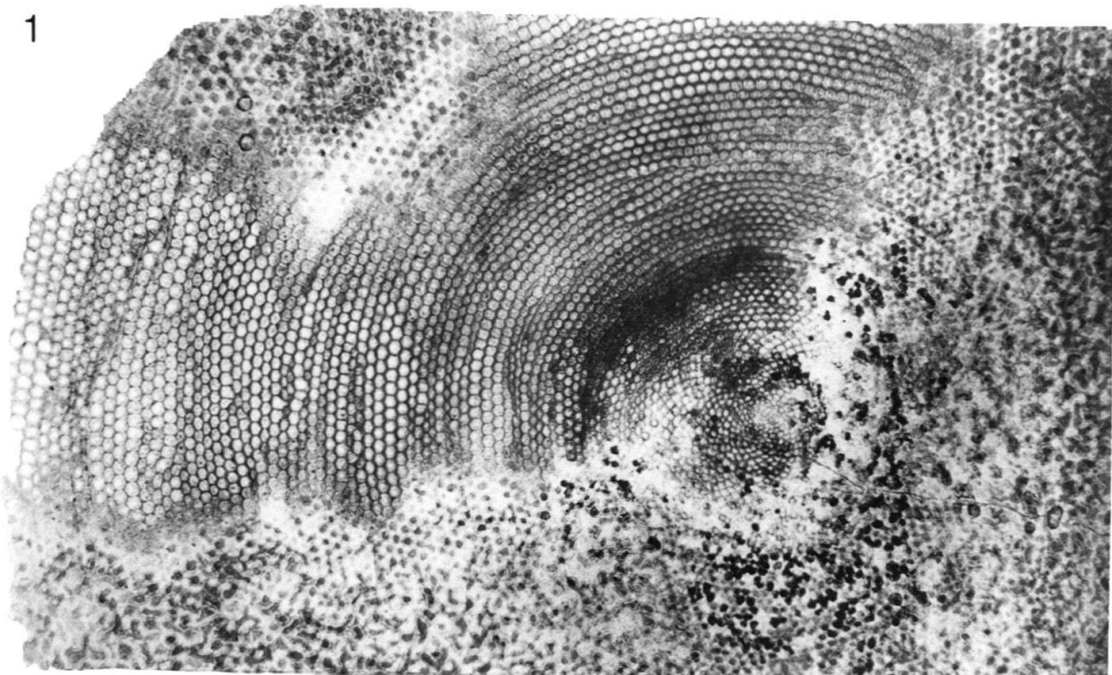
Plate 23

- Fig. 1 *Lepidocyclina gigas* Cushman p. 1224
Kapur Quarry, Lz. 3465, C 35986, × 17.
- Fig. 2 *Lepidocyclina forresti* Vaughan, B-form p. 1226
with normal lepidinoid nepiont and small pillars, Morne Diablo Quarry, K.S. 70,
C 36104, × 17.

Plate 23



1



2

Plate 24

- Fig. 1 *Miogypsina (Miogypsinoides) complanata* Schlumberger p. 1236
Mejias Quarry (in matrix), Terpstra 143, C 35912, × 30.
- Fig. 2–4 *Miogypsina (Miogypsina) gunteri* Cole p. 1236
Kapur Quarry, Lz. 3473, C 35914 (Fig. 2), C 36107–36108 (Fig. 3–4), × 30.
- Fig. 5 *Miogypsina (Miogypsina) bramletti* Gravell p. 1237
Morne Diablo Quarry, K.S. 19b, C 35911, × 30.
- Fig. 6 *Miogypsina (Miogypsina) hawkinsi* Hodson p. 1236
Morne Diablo Quarry, coll. K. 12-1-41, C 35915, × 30.
- Fig. 7 *Miogypsina (Miogypsina) hawkinsi* ? p. 1236
Morne Diablo Quarry, coll. K. 12-1-41, C 36113, × 30.
- Fig. 8–11 *Miogypsina (Miogypsina) bramletti* Gravell p. 1237
Morne Diablo Quarry, K.S. 19b, C 36109–36112 (Fig. 8–11), × 30.

Plate 24

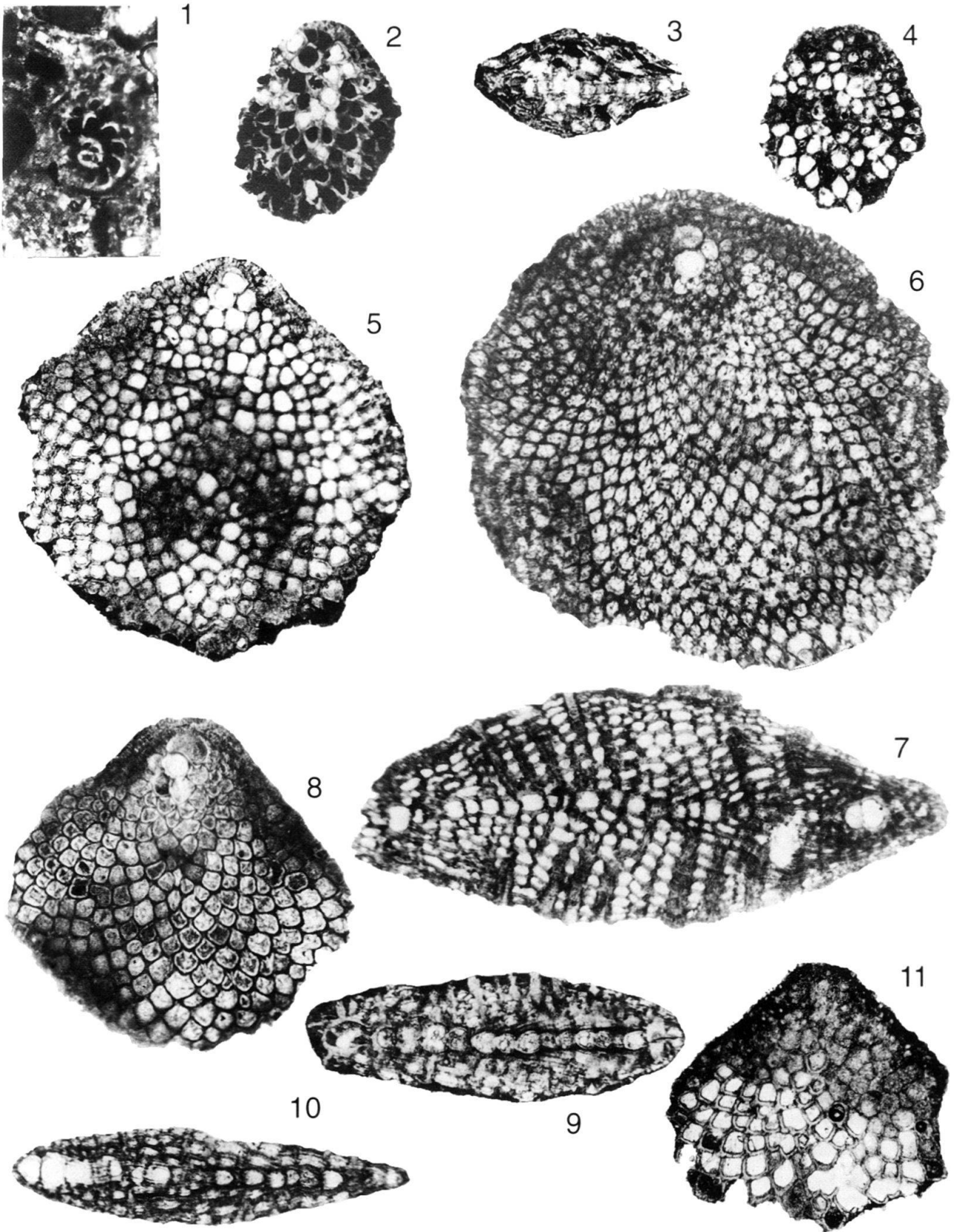


Plate 25

Fig. 1-8 *Miogypsina (Miolepidocyclina) staufferi* Koch

p 1237

Fig. 1, 4-5, 8: lenticular; 2-3, 6-7 conchoidal; Morne Diablo Quarry, K.S 70 (Fig. 1-7), K.S. 79 (Fig. 8), Fig. 35920 (Fig. 1), C 35919 (Fig. 2), C 36114 (Fig. 3), C 36117-36118 (Fig. 4-5), C 36115-36116 (Fig. 6-7), C 35921 (Fig. 8), $\times 30$.

Plate 25

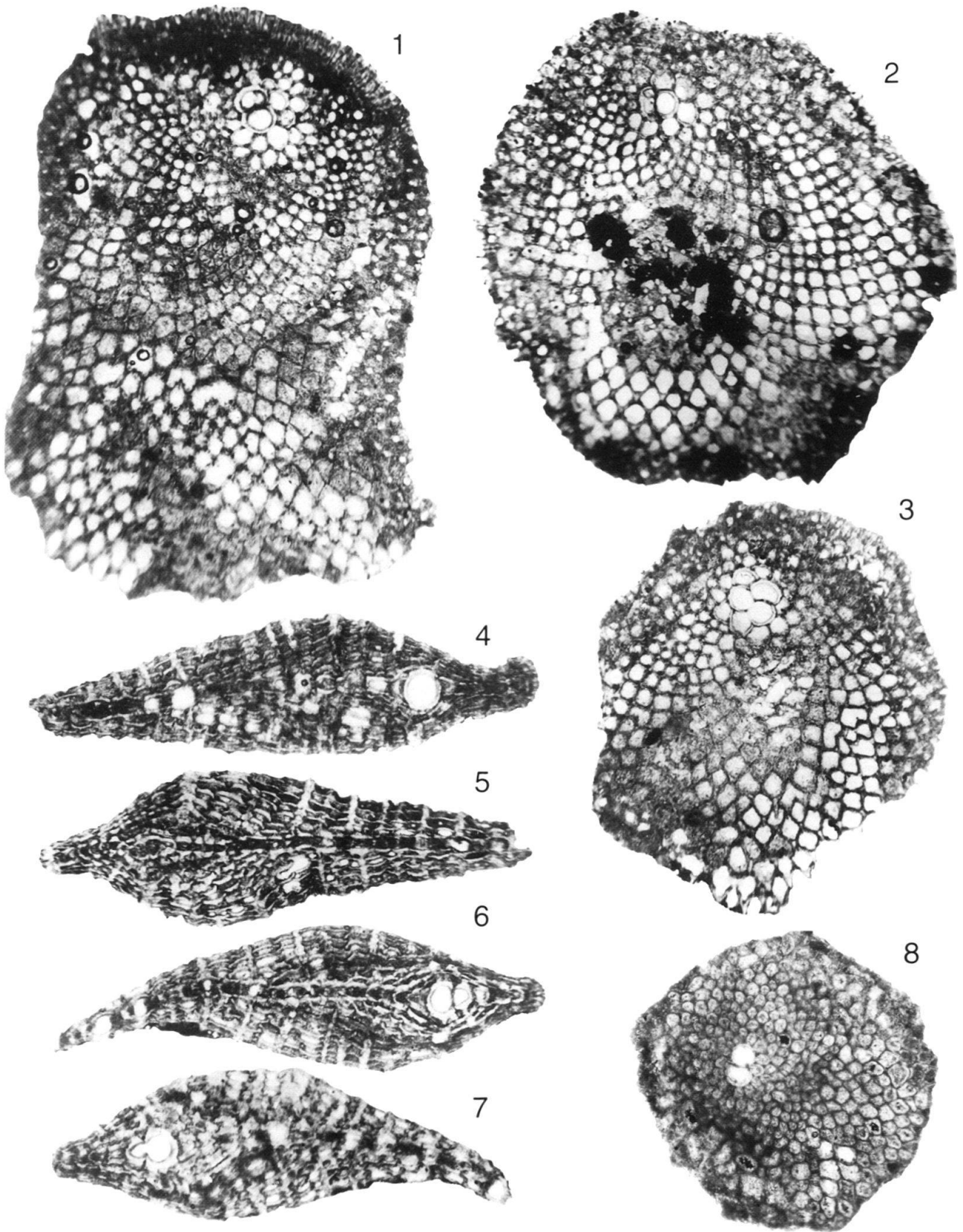


Plate 26

- Fig. 1-2 *Miogypsina* sp., B-form
same specimen, Morne Diablo Quarry, K.S. 70, C 35923, $\times 30$ and $\times 50$.
- Fig. 3 *Miogypsina* sp., B-form
Morne Diablo Quarry, K.S. 70, C 36119, $\times 50$.
- Fig. 4 *Miogypsina* sp., B-form
Morne Diablo Quarry, M. 13600B, C 35924, $\times 50$.

Plate 26

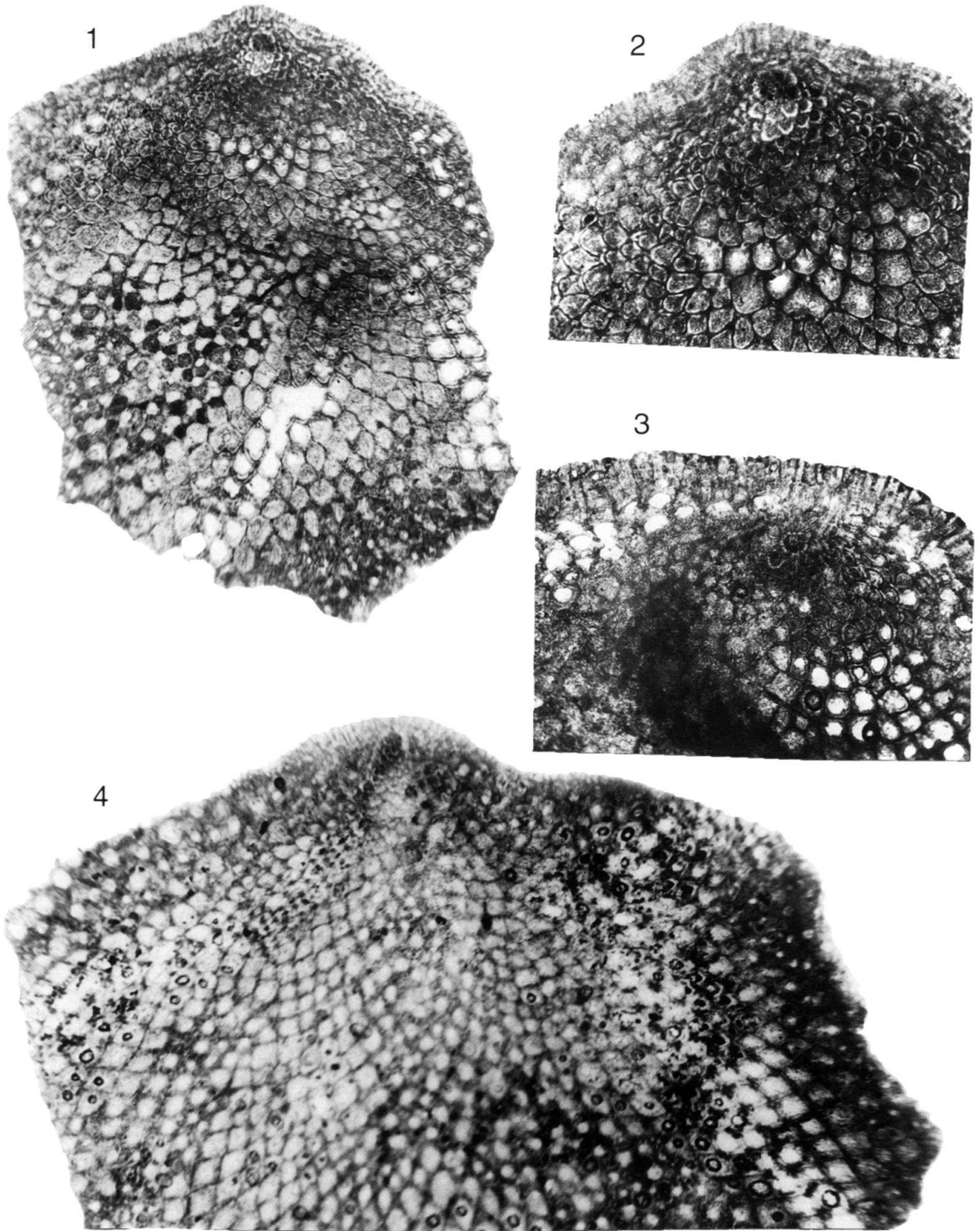


Plate 27

- Fig. 1 *Eoconuloides* cf. *lopeztrigoi* (D. Palmer) p. 1229
(reworked specimen), Point Bontour, St. 89, C 36042, × 30.
- Fig. 2 *Helicosteginopsis soldadensis* (Grimsdale) p. 1235
Soldado Rock, K. 2854, C 31099, × 30.
- Fig. 3 *Helicocyclina paucispira* (Barker & Grimsdale) p. 1236
Point Bontour, St. 85, C 35942, × 30.
- Fig. 4 *Helicocyclina paucispira* (Barker & Grimsdale) p. 1236
Vistabella Calyx 57, 1000–1010 feet, × 30.
- Fig. 5 *Amphistegina grimsdalei* Caudri p. 1234
Soldado Rock, K. 2651, specimen in Shell's collection in the Hague, × 30.
- Fig. 6 *Amphistegina grimsdalei* Caudri p. 1234
Soldado Rock, Grimsdale 33, specimen in Shell's collection in the Hague, × 30.
- Fig. 7 *Helicosteginopsis soldadensis* (Grimsdale) p. 1235
Soldado Rock, K. 2651, C 31100, × 30.
- Fig. 8 *Helicocyclina paucispira* (Barker & Grimsdale) p. 1236
Vistabella, E.L. 1435, C 35943, × 30.
- Fig. 9 *Helicolepidinoides intermedius* Caudri, n. sp. p. 1231
Farallon Rock, coll. Stainforth, Renz & Rutsch, C 36079, × 30.
- Fig. 10 *Helicocyclina paucispira* (Barker & Grimsdale) p. 1236
Vistabella, E.L. 1207, C 35941, × 30.
- Fig. 11 *Helicosteginopsis soldadensis* (Grimsdale) p. 1235
B-form, Vistabella Quarry, Cd. 12, C 35938, × 30.
- Fig. 12 *Helicosteginopsis soldadensis* (Grimsdale) p. 1235
B-form, Vistabella Quarry, coll. Lehner 1933, C 35937, × 30.
- Fig. 13 *Helicolepidinoides intermedius* Caudri, n. sp. p. 1231
Point Fortin West, UBOT well, F.W. 181, 8687–8707 feet, specimen in Shell's collection in the Hague, × 30.
- Fig. 14–15 *Helicolepidinoides intermedius* Caudri, n. sp. p. 1231
Farallon Rock, coll. Stainforth, Renz & Rutsch, C 36121–36122 (Fig. 14–15), × 30.
- Fig. 16 *Helicosteginopsis soldadensis* (Grimsdale) p. 1235
B-form, vertical section, Navette area, R.M. 1337, C 35939, × 24.
- Fig. 17 *Pseudophragmina bainbridgensis* (Vaughan) p. 1206
B-form, Point Bontour, St. 46, C 36011, × 34.

Plate 27

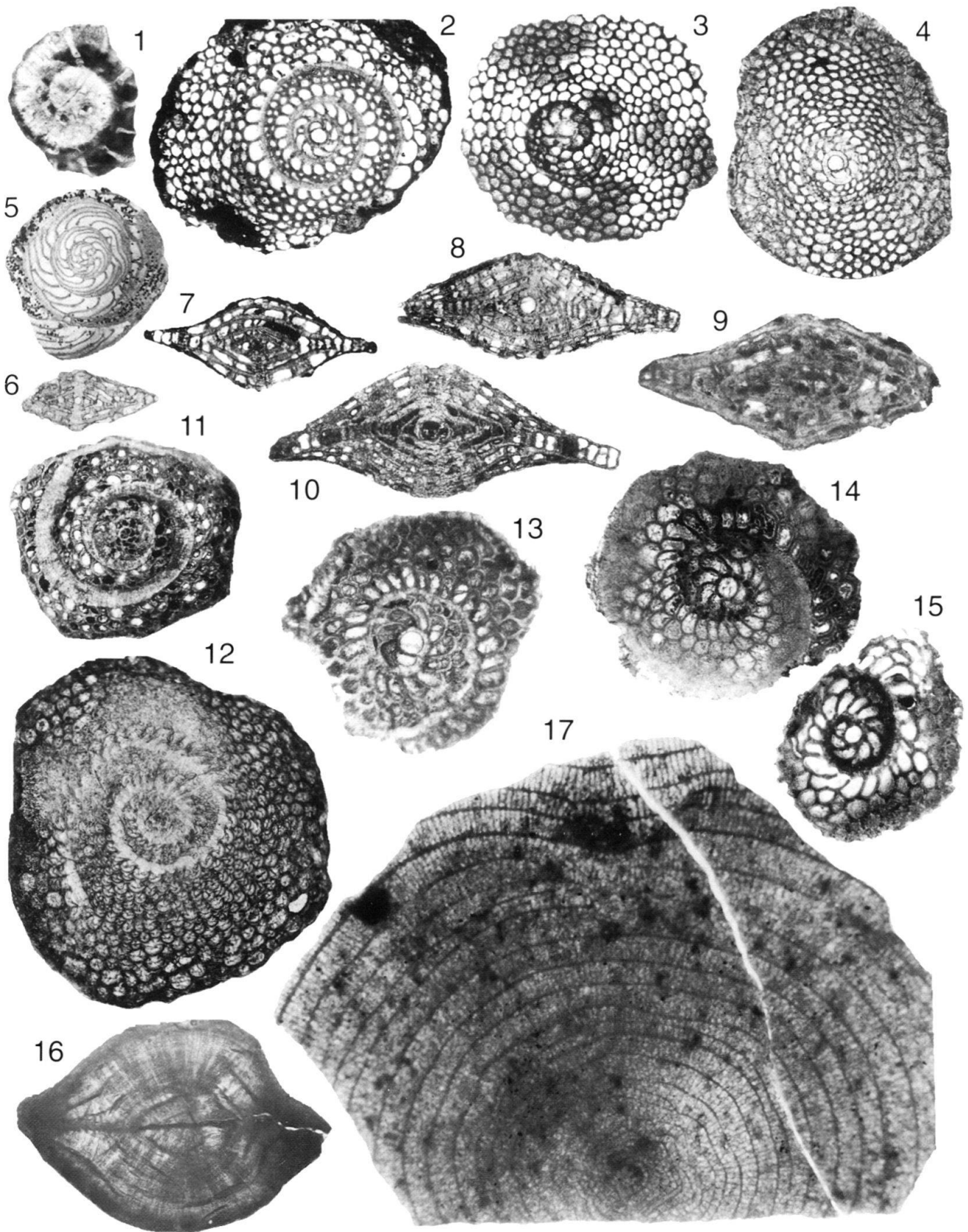


Plate 28

- Fig. 1 *Asterocyclina vaughani* (Cushman) p. 1208
Vistabella, Calyx 59, 390–400 feet, C 36065, × 34.
- Fig. 2 *Lepidocyclina supera* (Conrad) p. 1225
Cipero Coast, Grimsdale 2, C 35978, × 17.
- Fig. 3 *Helicosteginopsis soldadensis* (Grimsdale), B-form p. 1235
Navette area, R.M. 1337, C 35936, × 30.
- Fig. 4 *Lepidocyclina supera* (Conrad) p. 1225
Cipero Coast, Grimsdale 2, C 35979, × 17.
- Fig. 5, 7 *Lepidocyclina nuda* Caudri, n. sp. p. 1225
Cipero Coast, Grimsdale 2, C 36123 (Fig. 5), C 36124 (Fig. 7), × 17.
- Fig. 6 *Lepidocyclina nuda* Caudri, n. sp., holotype p. 1225
Cipero Coast, Grimsdale 2, C 36061, × 17.

Plate 28

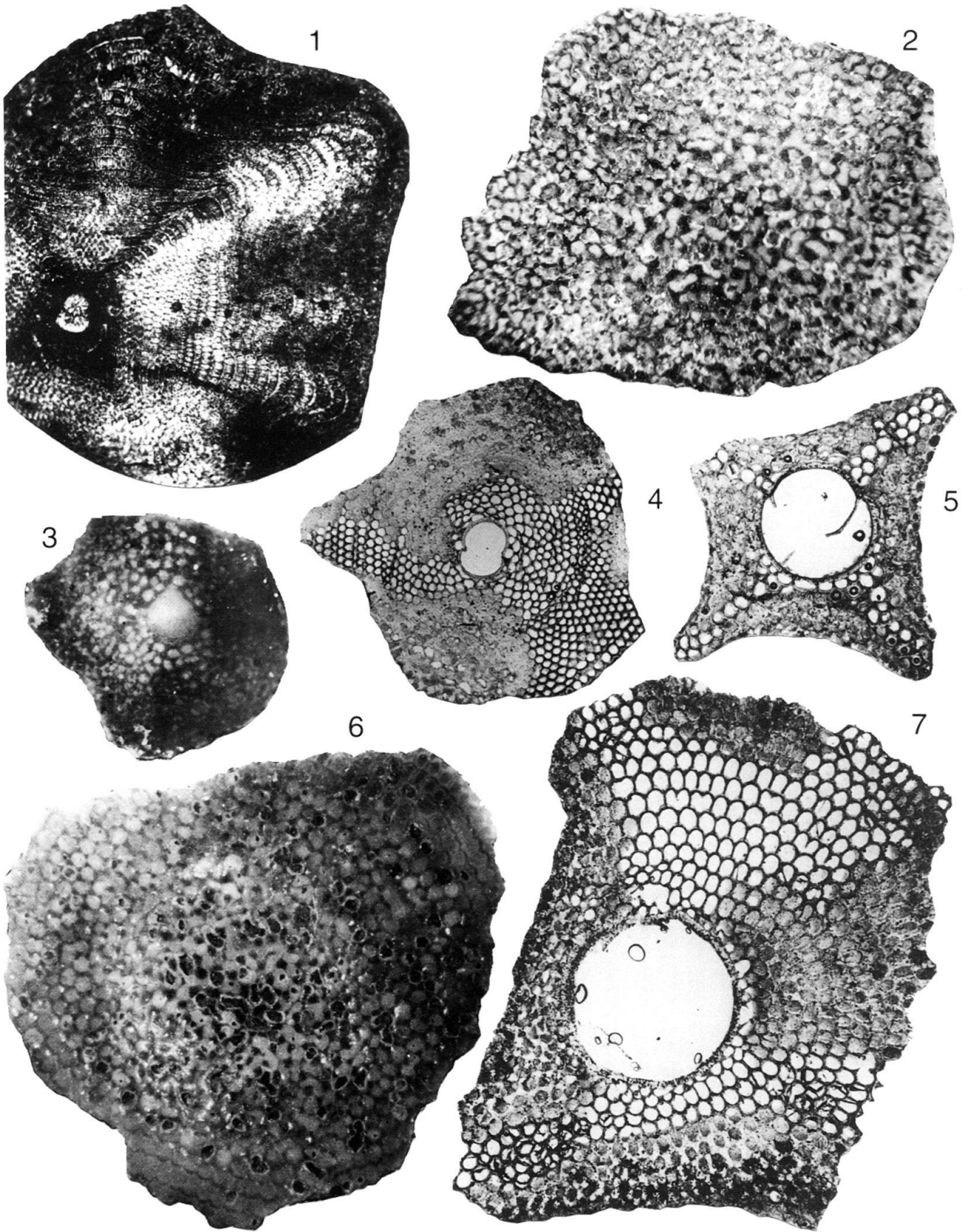


Plate 29

- Fig. 1 *Lepidocyclina forresti* Vaughan p. 1226
pillared variety, Morne Diablo Quarry, K.S. 70, C 36053, × 17.
- Fig. 2 *Lepidocyclina parvula* Cushman, A-form p. 1227
Morne Diablo Quarry, K.S. 70, C 35997, × 17.
- Fig. 3 *Cycloloculina jarvisi* Cushman
Soldado Rock, K. 3692, same specimen as Pl. 8:13, C 31049, × 60.
- Fig. 4 *Lepidocyclina canellei* Lemoine & R. Douvillé p. 1227
Morne Diablo Quarry, K. 2667, C 35992, × 17.
- Fig. 5–6 *Sorites* sp. p. 1237
Gasparillo Quarry, C 36044 (Fig. 5), C 36125 (Fig. 6), × 17.

Plate 29

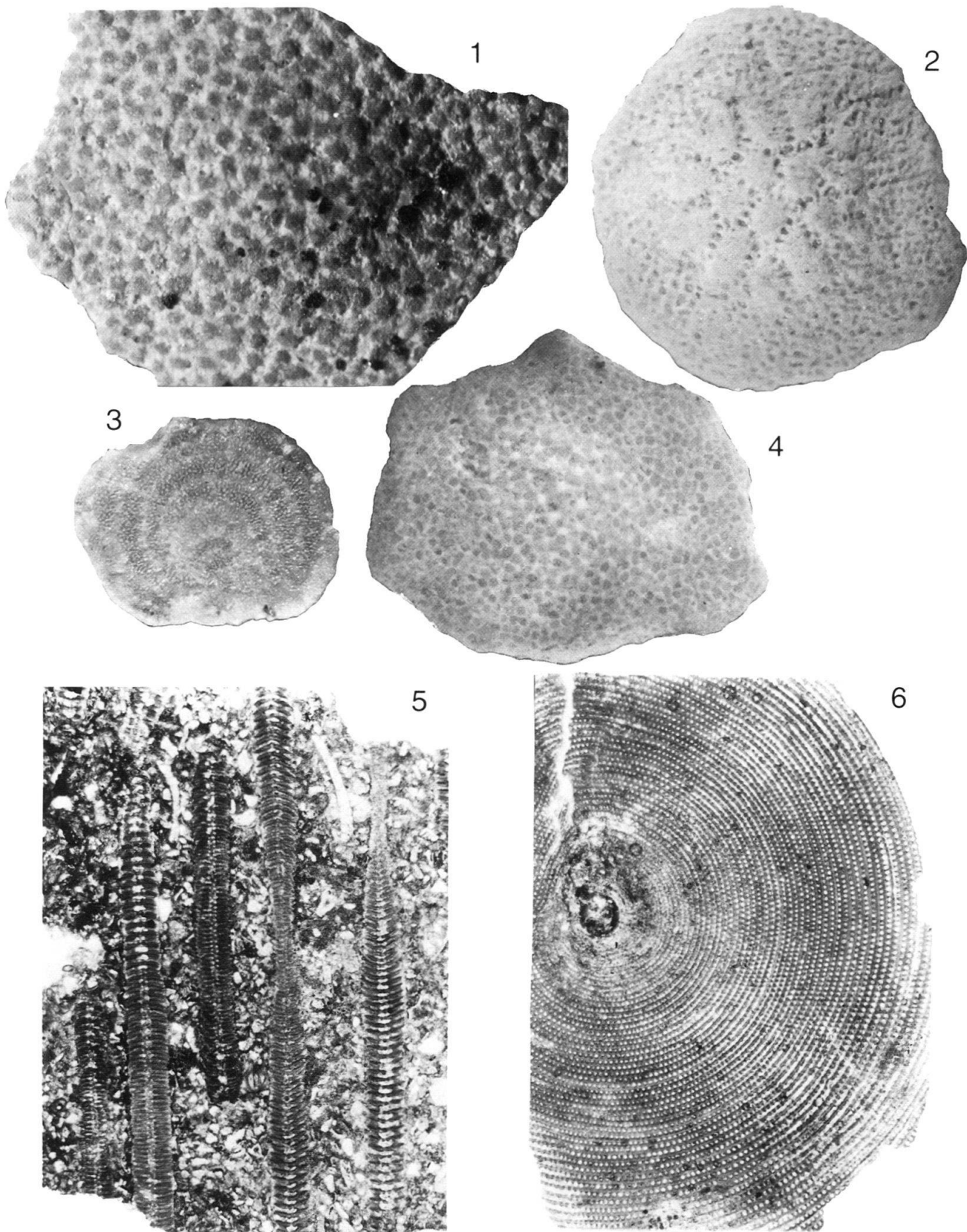


Plate 30

- Fig. 1 *Lepidocyclina canellei* Lemoine & R. Douvillé p. 1227
regenerated specimen, Morne Diablo Quarry, K. 2667, C 36098, × 17.
- Fig. 2 *Helicosteginopsis soldadensis* (Grimsdale), B-form p. 1235
Vistabella Quarry, Coll. Lehner 1933, C 36120, × 30.
- Fig. 3 *Lepidocyclina (Polylepidina) nitida* Caudri, n. sp., B-form p. 1215
Point Bontour, St. 71, C 36067, × 30.
- Fig. 4 *Lepidocyclina yurnagunensis* (Cushman), B-form p. 1220
Cipero Coast, Cd. 26, C 35967, × 17.
- Fig. 5 *Neodiscocyclina fonslacertensis* (Vaughan & Cole) p. 1204
with clear undivided ring around the nucleoconch, Soldado Rock, K. 2951B, C 31154, × 34.
- Fig. 6 *Helicolepidina spiralis* Tobler p. 1233
common form, Point Bontour, St. 63, C 35927, × 17.
- Fig. 7 *Neodiscocyclina fonslacertensis* (Vaughan & Cole) p. 1204
flat form, Lizard Springs, Mky 102b III, U.S.N.M. Washington, × 17.
- Fig. 8 *Asterocyclina asterisca* (Guppy) p. 1207
lenticular variety, Point Bontour, St. 63, × 17.
- Fig. 9 *Lepidocyclina sanfernandensis depressata* Caudri, n. var. p. 1223
Cipero Coast, C.S. 11, coll. Naegeli, C 36077, × 17.

Plate 30

