

Zeitschrift: Helvetia : magazine of the Swiss Society of New Zealand
Herausgeber: Swiss Society of New Zealand
Band: 70 (2004)
Heft: [9]

Rubrik: New Zealand Swiss Club news & happenings

Nutzungsbedingungen

Die ETH-Bibliothek ist die Anbieterin der digitalisierten Zeitschriften. Sie besitzt keine Urheberrechte an den Zeitschriften und ist nicht verantwortlich für deren Inhalte. Die Rechte liegen in der Regel bei den Herausgebern beziehungsweise den externen Rechteinhabern. [Siehe Rechtliche Hinweise.](#)

Conditions d'utilisation

L'ETH Library est le fournisseur des revues numérisées. Elle ne détient aucun droit d'auteur sur les revues et n'est pas responsable de leur contenu. En règle générale, les droits sont détenus par les éditeurs ou les détenteurs de droits externes. [Voir Informations légales.](#)

Terms of use

The ETH Library is the provider of the digitised journals. It does not own any copyrights to the journals and is not responsible for their content. The rights usually lie with the publishers or the external rights holders. [See Legal notice.](#)

Download PDF: 14.03.2025

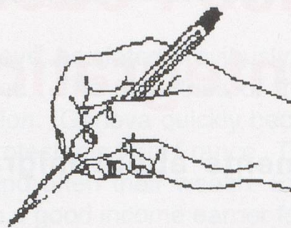
ETH-Bibliothek Zürich, E-Periodica, <https://www.e-periodica.ch>

New Zealand Swiss Club

News & Happenings

Web page - <http://www.swiss.org.nz>

E-mail - society@swiss.org.nz



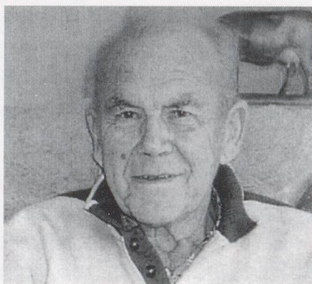
Auckland
Hamilton
Taranaki
Wellington
Christchurch



taranaki@swiss.org.nz

Sadly, we have lost several members in the past few months. Our sincere condolences to their families, and I hope that your 'extended Swiss family' has brought you some comfort in these sad times. Many of these people were members who actively participated in our club's functions and activities and we will most certainly miss them very much.

Herbert Anton Maechler (Bert) 1928 - 2004



Bert was born in Riedern, a village of Glarus. At 15, Bert went farming for two years in Altnau, which Bert described as one of the nicest places in Switzerland. Following that, Bert went into the cheesemaking industry and as an apprentice he would have to do the Emmental - the biggest cheese weighing 80 - 100 kilos.

After the apprenticeship Bert travelled and worked in Denmark. Towards the end of 1950, Bert set sail for New Zealand and finally arrived in Wellington where he had his first milkshake. He worked and travelled extensively around New Zealand until 1954 when he met his future wife Margaret. They were married on 24 August 1957 in St Mary's, Hawera. They farmed for eight years in Kapuni and then bought their own farm in Rahotu. Seven years later they moved to New Plymouth with their four children - Julie, Bruce, Grant and Marise. Before retiring in 1998 Bert worked at Burketts, Wormalds, and Lands and Survey.

Bert had many loves - cards, telling a good story, the garden and of course cigars and kirsch!!! And even after 50 years, he still called Switzerland home.

The Taranaki Swiss Club and the Swiss Society of New Zealand extend their deepest sympathy to Margaret and family.

LB

Past Events...

Kegeln recommenced at the beginning of October, and Johnny was very pleased to see so many people there. Let's hope that it continues for the remainder of the season.

Some members prefer to play cards, whilst some play kegeln ... and some do both!!! So even if you don't wish to play Kegeln, you are most welcome to join the jassers ... who make just as much noise!!!!????!! Great competition (in either sport), good company and a lovely supper to follow ... why not join in???

Forthcoming Events...

November

4 & 18 Kegeln again ... give it a go!!!

21 Ted Napflin Memorial Shield and Championship Shoot at 1.00pm. Come along and support Mark ... free tuition available ... good company ... a coffee if desired... what more could you want???

28 Christmas Shoot / Kegeln. This day starts at 10.00am with competitors able to shoot or skittle. Everyone is to bring a wrapped prize worth at least \$10.00 and of course you will win a prize back ... which should be worth at least \$10.00!!! A potluck lunch is held, so bring along something to share ... always a wonderful, plentiful display of food ... which somehow is quickly devoured!!! An activity will be organised for the children and Father Christmas

will come ... practise your carols, as I am told that Father Christmas does enjoy hearing your delightful voices!!! In tune!!! Parents to bring a wrapped, named present for their children. This is a great social day, with various activities organised, so come along parents and bring your children to this terrific day.

December

31 Boy, how the year has flown by so very quickly ... it's New Year's Eve already ... come to the entertaining party at the Swiss Club. I am sure that you will enjoy yourselves, and the entertainment is very good. A BYO BBQ will be held at 6.00pm, with the evening kicking off at about 8.00pm. See you there!!!

MD



ozeania

Ihre Besucher,
Verwandten und Freunde
aus der Schweiz
fliegen am günstigsten
mit uns!

Zürich - Auckland - Zürich!
Linienflüge zu Charterpreisen
bereits ab Fr. 1755.-

(EK)

Australien Neuseeland Südsee

Ozeania Reisen AG
Ozeania Reisehaus • 5442 Fislisbach
Telefon +41 56 484 20 20
Telefax +41 56 484 20 21
www.ozeania.ch • info@ozeania.ch

Your Swiss
Bakery,
Patisserie
& Cafe

Eveline & Franz
Muller

PH 09 489 9737

5 Milford Road, Milford, Auckland

- Bunder Nusstorte • Zuger Kirschtorte
- Hauskonfekt • Biberli • Urner Leckerli

Orders taken for all your special occasions

Hours: Monday & Tuesday 8.00 - 15.00
Wednesday to Friday 8.00 - 16.30
Saturday 8.00 - 14.30 • Sunday closed



CHRISTCHURCH SWISS CLUB NEWS

Forthcoming Events...

Jass Evening at 'Bergli Hill'

Rowena and Max have invited everybody to spend an evening at their cosy home overlooking Lyttelton Harbour. If you are not a 'Jasser', other card or board games will be available, or just join us for the good company in a warm atmosphere. This will be held on Thursday 4th November from 7.30pm. Bergli Hill Teddington (Main road to Diamond Harbour). BYO drinks.

**Hamilton
Swiss Club**
hamilton@swiss.org.nz

Past Events....

The Fondue Evening was held on Saturday the 18th September and for the first time at the Matangi Hall instead of the Eureka Hall which has been the venue for at least thirty years. The new hall seemed very inviting and warm and was nicely decorated with Swiss flags, flowers, placemats and candles. We also had an earlier start time of 7pm and the hall filled up very quickly. We were very lucky to have The Sound of Switzerland from Auckland to entertain us and this soon gave the place even more atmosphere. By 8 o'clock the fondue was ready to be served and with just over 80 people to feed, everything ran like good old Swiss clockwork. The fondue was delicious and nearly everyone had a second helping. Compliments to the two stirrers, Hans and Walter, for serving such a nice fondue. Everyone also enjoyed the home-made bread baked by Heidi and a great selection of cold meats. Dinner was followed by lots of dancing and a bit later the President, Herbert, presented members with the medals and trophies



won earlier in the year. Congratulations to all the participants and in particular to the winners. Soon it was time to serve supper which consisted of the usual great selection of home-made baking. There seemed to be plenty for everyone, as I think most people had eaten quite a bit of fondue and weren't that hungry anymore. Coffee and schnapps of course is always appreciated by everyone. Many thanks to the band for travelling all the way from Auckland to entertain us and also many thanks to the committee and all the helpers for all their hard work during the evening and at the end when it came to tidying up.

Forthcoming Events...

Family Christmas Party – will be held on Sunday 5th December, 11am at the Newstead School, same venue as last year. Newstead School is just past the cemetery on the main road from Hamilton heading towards Morrinsville. The swimming pool may or may not be available, depending on the weather, and whether the school has it ready. There will be plenty of other activities and entertainment organised. Santa will also be calling, so wrapped and clearly named presents up to the value of \$10 can be left with a committee member. Feel free to also bring balls, rackets etc for the children's games. There will again be a great selection of raffle prizes, so please remember to bring along some money and prizes if you wish to donate something. For lunch, the club will provide sausages, bread and drinks, as well as coffee and baking. Please bring any other snacks your family may enjoy. In case of bad weather, an indoor area is

also available. For outside, please bring along a rug or deckchairs to sit on. For further information, please contact Anita, 07 856-2414 or any other committee member.

AZ



Forthcoming Events...

November 6th. Garage Sale.

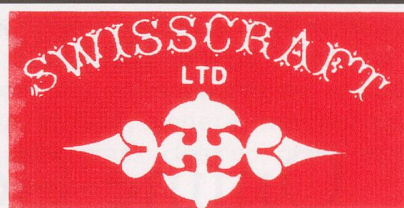
I hope you have been collecting all those unwanted and no-longer-in-use items. The garage sale is a very good fundraiser and the club needs your help. Please bring your 'treasures' to the clubhouse or let any committee member know if you need us. All items are welcome.

Sunday afternoon Jassen. November 14th.

If you are interested in a game of Jassen, do come and join us for a friendly game in the Clubhouse.

Day trip to Kapiti Island. November 21st.

This promises to be a great outing. Petra and Craig have organised this day trip. If you need further information please contact Petra at 563 8600.



Incorporating Domestic &
Commercial Work
Specialists in Fabric & Leather
Upholstery

Also Deep Diamond Buttoning
All Furniture Re-Upholstery
Swissscraft Ltd

Manager: **Herbert Staheli**
Showroom: 33-39 Colombo St
Frankton-Hamilton

Call us

Phone 07 8477 220

Fax 07 8473 039

Swiss and German Delicatessen

Munz Chocolates
Toggenburger Kagi fretli
Hero Preserves and Roesti
Nowka Sauerkraut, Rotkraut,
Gurken, Senfgurken, Sellerie Salad
Herring in tin
Organic Bread
Pumpernickel
Marzipan
Bahlsen Biscuits

Please ask for our Price List

Impex

INTERNATIONAL TRADING LIMITED
FINE QUALITY PRODUCTS

Ph 09 407 4277 - Fax 09 407 4278
Free Fax 0800 4SWISS (0800 479 477)
email: impex@xtra.co.nz
PO Box 528, 13a Sammaree Pl, Kerikeri

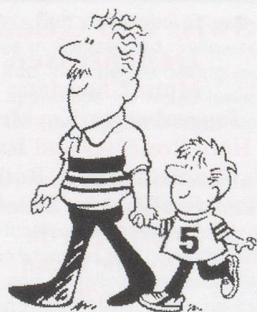
European Carol Singing November 27th; if wet November 28th in the Botanical Garden.

Come and enjoy listening to the European Carols while sitting on the lawn. The soundshell in the Botanical Garden is a perfect venue and the candles give a wonderful atmosphere.

Any contribution towards the Christmas Biscuit Stall are most welcome. Please ring Monika on 478 5649 or Verena on 526 9841 for further information.

We're finally coming to the end of a very wet Wellington winter and are enjoying the springtime blossom and arrival of the warmer weather. In the middle of September a small group of our members took advantage of the improving weather and had a very enjoyable walk to Red Rocks on the Wellington South Coast. There were beautiful views of the snow-capped Rimutaka Ranges and the Kaikoura Mountains across Cook Strait as well as the occasional ferry and numerous dozing seals. Fortunately there are still enough fish in Cook Strait to keep the seals happy and despite some really nice morsels for afternoon tea we went unbothered before turning around to complete the walk back to the car park. We hope the weather will be as co-operative for our big trip to Kapiti Island on 21 November when about a third of our club members are due to take the trip.

We're also very keen on getting some further feedback about the planned family tramp at Wellington Anniversary Weekend. Please contact Craig or Petra (04-563-8600).



Albergo Hanmer *Bed & Breakfast*
Rippingale Road • Hammer Springs • North Canterbury

We look forward to treating you!
Specialising in Swiss brunch-style breakfasts, we are passionate about our cuisine - try us out!

Bascha & Beat Blattner

Booking Freephone: 0800 342 313

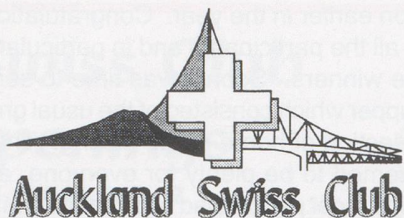
Ph/Fax: 03 315 7428

e-mail: albergohanmer@hotmail.com

www.albergohanmer.com

Only 90 minutes drive north of Christchurch Intl Airport!

True hospitality without compromise



auckland@swiss.org.nz

Spring is definitely on the way, even if the warming sun disguises itself behind the ever present breeze.

Going by the attendance at our singing group, people have returned from their pilgrimage to the homeland, and we hope that everyone had a pleasant trip and wonderful times with their loved ones.

I was fortunate enough to get hold of a ticket to the 'Alpine Party' at the farm on Saturday 9 October, organised by the Swiss Kiwi Yodelling Group as part of their fundraising campaign for the forthcoming 'Eidgenossische Jodelfest' in Aarau, June 2005.

It seems that when a yodler says: Come to our party, nobody says No.

With the club's permission of course, the Yodlers had to increase the capacity of the covered-in area, to hold about 120 people. They offered entertainment in the form of raffles, games of bowling and games of matching the yodler with the baby picture. Then there was a fantastic

buffet dinner including roast venison with gravy and Spatzle, and all the trimmings that go with it. A very original show was presented by them and featured a whole bracket by the sisters Ursula Arnold and Regula Widmer who brought us oldies back to the good old hits from yesteryear, with the accompaniment of their accordion, ukulele and Marcel Widmer's guitar. Martin's disco had all the rhythms on hand to top the evening off with a lively dance.

When most of us thought it was really time to go home, we had an unexpected extension to the party granted to us by way of a bus that got stuck in the mud and blocked the exit road. How lucky are we! No damage done, just one very cool-headed Fritz who apologises for having to be a bit no-two-ways-about-it while being faced with too many Indians when he was being the one and best chief in charge. He called his mate with a big 4WD and the job was done.

Thank you, Yodlers, for organising such a fantastic night!

For those who missed out on this unique and entertaining party, there are rumours that another one is planned for early next year.

The internet - We from the committee are using the internet more and more for communication with our members, and since it is immediate, this creates

Überraschen Sie Ihre Liebsten
in der Schweiz!

Online-Geschenkshop
www.jelmoli.ch

Jelmoli
THE HOUSE OF BRANDS

Bargeldlos einkaufen
und punkten.

BONUS
CARD

www.jelmoli.ch

a closer relationship with our members, in a way.

We therefore kindly remind you that if you do have an e-address and do not yet receive our (by now at least monthly) announcements, please advise our treasurer of your address who holds the database for the club – heinze@matysik.co.nz We have passed a motion at our August meeting that only messages approved by the committee are to be sent through to our members, so you have our assurance that giving out your e-address to us will not result in an extra stream of advertising and junk mail blocking your inbox.

Jassen:

The results for the last Card Evening are:

1. Andre Iten - 4114 points;
2. Hans Iten - 4058;
3. Annagret Wolf - 3982;
4. Molly Gianotti - 3950;
5. Louis Wallimann - 3800;
6. Hilda Iten - 3771;
7. Nelly Steinemann - 3748;
8. Elisabeth Preisig - 3576;
9. Hansruedi Wolf - 3364;
10. Jakob Preisig - 3288

The number of players is rising again slowly, and hopefully we have a full house (go for 20!) for our last Card Evening on Friday 19 November 2004, 7.30pm at the Good Shepherd Church Hall, end of Telford Ave (off Dominion Rd), Balmoral. Entry fee \$3 and please bring a small prize and a plate (with some snacks on it) for supper.

Thank you all for participating and for bringing supper and prizes, and we hope to see more and more of you as the new season starts March next year.

The Cardmaster Hans Iten Tel. 620 9208.

Future Events...

14 November 2004 THE GREAT COLOURFUL MYSTERY TOUR

Assembly points:

North Shore – Stagecoach Bus Depot, 76 Diana Dr, Glenfield – 9.30am

South: Manukau Shopping Centre, main entrance facing Gt.Sth. Rd. – 10.15am

City: on arrangement by phone: Greenlane McDonald's – 9.55am. Return will be around 5pm.

Remember the cost is \$25 for an adult, \$15 for a child 3-15 years. Please call Trudi on 376 4923 for a late booking until 3 November 2004 only.

Thank you to those who have already made their booking.

With reference to the people who won a free minutes' voucher from this company, please note the following:

Net Tel Communications has offered to sponsor the Swiss Clubs of NZ by donating to us 5% of what our members spend with them. The rates are very competitive. The capped rate to Switzerland is \$10.05 for up to 2 hours - over 30% less than Telecom. A number of prizes (toll credit and free internet time) were awarded at events held recently. These winners have not yet collected their prizes! Would they please contact the President of their Club for further instruction. To join up with Net Tel for discounted toll calls and internet access starting from \$9.95, and to support your Swiss Club, please call 0800 NET TEL (0800 638 835).

Next Stammtisch is Saturday 26 November 2004, from afternoon till late. Bring something for a barbecue dinner. Light drinks can be purchased from the club. Please call Markus Buhler for further information 832 3334 or Heinz Matysik 624 1589.

Our Spring Clean Working Bee Saturday 27 November 2004.

From 9am onward. Lunch provided. All helpers welcome. Jobs to be done include some carpentry work for a rail along the stairs towards the children's playground, general maintenance, mowing grass, cleaning, gravel control on road.

Kaeppli's Bed & Breakfast

40 Gray Ave, Kuaotunu,

Coromandel Peninsula

Phone: 07 866 2445

email: kaeppli.kuaotunu@paradise.net.nz

www.kaeppli.co.nz

Exquisite Meals - Swiss Chef - Al fresco dining.

Off the main road - Quiet, peaceful setting.

And our view? Just the best!

Samichlaus - Christmas Party. Sunday 5 December 2004. at the farm, Kaukapakapa.

From 10am onwards. Lunch can be purchased. Santa will bring Christmas goodies for the children of our members, non-members can purchase them. Please learn your Christmas verses now.

A reminder of the past: Santachlaus was a bit like a 'precursor' to the Christmas cheer. It was as if the old man came to visit all the children first to put them back into shape, because he was not your kindly man whose lap to be sitting on and being photographed, is every child's dream, but rather he was a scary man who spoke harshly about a child's most shameful deeds - like smoking behind the shed and not doing the homework and so on. In his big bag he carried not only nuts and mandarins that he did reluctantly give away, but also a 'Fitze' (whip) that he either used himself on the little delinquents, or left it with the parents to have as a back-up if the usual methods of corrections did not work. But wait, there's more. He was quite capable, so we were made to believe, if your behaviour proved to be so appalling as to deserve this, to shove you into his bag and drag you back to his dark forest and use you as a helper to prepare for the Christmas cheer, or goodness knows what other fate could expect you out there. Of course Santa always visited on



AVAILABLE NOW!

**New Zealand's finest
Delicatessen
Meats**



Continental Frying/Boiling Sausages

- Speciality Meats • Meat Loaves
- Smoked Meats • Cold Cuts
- Salamis • Dried Meats

09 274 4455

FAX: 09 274 1203

68-70 Greenmount Drive

East Tamaki, Auckland

Hours: Mon to Thurs 8am-4pm

Fri 8am-5pm • Sat 8am-1pm

Visit our web page: www.swissdeli.co.nz

Those who
say a thing
cannot be
done should
not stand in
the way of
those who
are doing it!!!

the 6th December, usually a cold winter night. To me the fear of this man was so deeply engrained that..... no, this information is not to be printed, it may disturb the young mind.

For the new year we have the picnic coming up on Sunday 13 February 2005. Details to follow.

Preceded by:

Working Bee – Saturday 29 January 2005. (Anniversary Weekend)

The Wandertag – Club Walk

Sunday 27 March 05 – Details to follow.

The AGM is scheduled for Saturday 30 April 2005. Details to follow.

Here is the latest news on Pascal: Go Getem! **Pascal Sigrist – update 15 October 2004**

In August, Pascal had an accident when he collided with one of a group of steers wandering on a country road late one night. Since the accident Pascal has been making great progress. There is no obvious break, but there is bruising, swelling and an incomplete injury of the spinal cord at C6 (the sixth cerebral vertebra). Below that level his body is

weak and he has little, but improving, movement in his legs. He is presently wearing a hard collar for support.

Pascal is committed to walking again and is participating in physiotherapy towards that goal. He is working on strengthening the muscles in his arms and hands and on moving himself from bed to chair and from wheelchair to car using a sliding board. His broken jaw has been wired but the wiring has been loosened and should be completely removed soon. His diet has been sloppy food and juices through a straw, but he is now able to enjoy some more 'adult' food. Between them, Pascal, his Doctors and the physiotherapy staff have set a goal for his coming home as 19 January 2005.

Pascal has been organising visits home to Silverdale and to his and Edith's chocolate factory in Waitoki – luckily chocolate can be broken into very small pieces and 'posted' through the gap between his teeth. These visits are exciting, emotional and very positive outings.

Pascal's mother Yolanda is still here – she is an invaluable help for them every day in many ways. She has now found a place to stay in South Auckland and she

would like to thank all those who have helped and have offered to help make this time less difficult for her.

Edith is working hard keeping the business running, finding out about ACC, spinal rehabilitation methods and where to get them, Occupational Therapy, etc etc. She and Pascal would like to thank everyone who has been so caring and helpful.

Pascal loves to see visitors at the spinal unit in Baird's Road, Otahuhu. The best times to visit are anytime between 12 and 1.30pm or 4.30 and 8pm weekdays, or anytime between 11am and 9pm on weekends. If you are visiting on the weekend though, please ring first – he may have 'escaped' again! Ph (09) 270 9016.

If you would like to send or bring a small gift here are some suggestions instead of flowers or sweets:

- Vouchers for alternative therapies, eg acupuncture, massage,
- Flax seed oil
- Fresh vegetable or fruit juice
- Natural yoghurt
- Floradix drink (available in chemists)

Thank you for your concern and support. From: Edith and Pascal.

edith@organicdelights.co.nz

AHV v NZ Superannuation

Following the many concerns expressed at the Swiss Society AGM back in early June, I've continued to pursue this matter with some persistence, right up to the highest levels.

First I sent a complaint to the Minister of Finance as advised by the Manager of the International Policy and Agreement Unit. After some weeks of waiting I was finally told by the Minister that my correspondence was being handed over to the Minister in Charge of Social Development and Employment, the Hon. Steve Maharey. To make sure that he did receive it, I sent him a copy as well. Again weeks passed until I received a reply from that quarter. To make sure that all members affected by the NZ Portability Provisions contained in Section 70 of the NZ Social Security Act 1964, are aware of the position we are in, I give you the Minister's reply in full.

'Thank you for your correspondence of 24 August 2004, regarding the direct deduction of Swiss pensions. I have also received a copy of your letter of 18 June 2004 addressed to the Hon Dr Michael Cullen, Minister of Finance. As you are aware, overseas pensions are directly deducted dollar for dollar from the New Zealand Superannuation entitlement.

'The direct deduction policy has been designed in this way so that no pensioner who has lived overseas is financially advantaged over someone who has lived and worked in New Zealand for their entire life. The direct deduction policy also applies to any New Zealander who works in Switzerland and

then returns to New Zealand to live. Any amount of Swiss pension they are entitled to would be directly deducted from their New Zealand Superannuation entitlement. The Ministry is currently considering its position on the treatment of voluntary pension contributions. I can assure you that the overseas assessment unit of Work and Income's International Services does not arbitrarily make enquiries of clients about overseas pensions. They make these enquiries when there is evidence that the person in question has resided overseas at some stage of their working life. It is correct that it is not compulsory to provide Work and Income with information relating to potential overseas pension entitlement. However, if a client chooses not to provide this information when requested, they will not be eligible to receive New Zealand Superannuation. In this situation, the client would receive their overseas pension free of direct deduction, but would not be entitled to receive New Zealand Superannuation. It is incorrect that if you wanted to return to Switzerland for your retirement your New Zealand Superannuation would cease after six months. Under the general portability provisions, if you wished to return to Switzerland you could apply to take 50% of the gross rate of your New Zealand Superannuation entitlement with you. The requirements are that you apply for portable payments before leaving New Zealand and are ordinarily resident and present in New Zealand on the date of the application. You must also be intending to reside in the overseas country for more than 26 weeks,

and be entitled to receive New Zealand Superannuation on the date of application or will be entitled to it before leaving New Zealand. Please contact International Services on 0800 777 117 if you have any further questions about portable payments overseas. The New Zealand Superannuation Portability Review is attempting to address some of the issues you have raised in your correspondence. The Review is ongoing, and at present I am unable to advise you of a completion date for the review process.'

Well, there you have it!! In my letters to the Ministers I'm also asking for some explanation as to why in the 1950-60s Swiss immigrants were seemingly excluded from the 'Assisted Immigration Package' available to British and Dutch people, as well as why we, who had paid our own way, were never informed that a tax rebate was available for immigrants, like us, who had paid their own way, but were never, nor were our employers informed that such a rebate was in place!!!

In my reply to the Minister, I'm calling for our full NZ Superannuation to be reinstated until such time as meaningful Social Security Agreement between our two countries is signed and sealed contending that such a solution would no doubt greatly expedite the 'current' review of the general portability provisions.

I hope this report will assist in understanding the situation we are currently in. Rest assured, I will continue to fight this issue for as long as it takes.

By Heinz Leuenberger