

Zeitschrift: Hochparterre : Zeitschrift für Architektur und Design
Herausgeber: Hochparterre
Band: 17 (2004)
Heft: [18]: Schindler Award for Architecture 2004 "Access for All" [english]

Artikel: Second Prize : Inside out
Autor: [s.n.]
DOI: <https://doi.org/10.5169/seals-122530>

Nutzungsbedingungen

Die ETH-Bibliothek ist die Anbieterin der digitalisierten Zeitschriften. Sie besitzt keine Urheberrechte an den Zeitschriften und ist nicht verantwortlich für deren Inhalte. Die Rechte liegen in der Regel bei den Herausgebern beziehungsweise den externen Rechteinhabern. [Siehe Rechtliche Hinweise.](#)

Conditions d'utilisation

L'ETH Library est le fournisseur des revues numérisées. Elle ne détient aucun droit d'auteur sur les revues et n'est pas responsable de leur contenu. En règle générale, les droits sont détenus par les éditeurs ou les détenteurs de droits externes. [Voir Informations légales.](#)

Terms of use

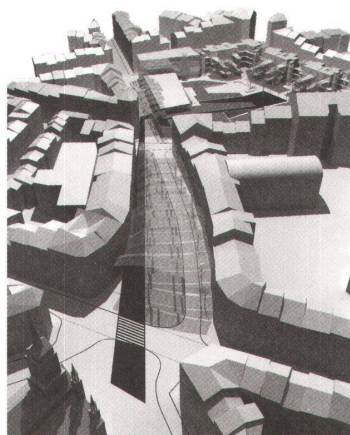
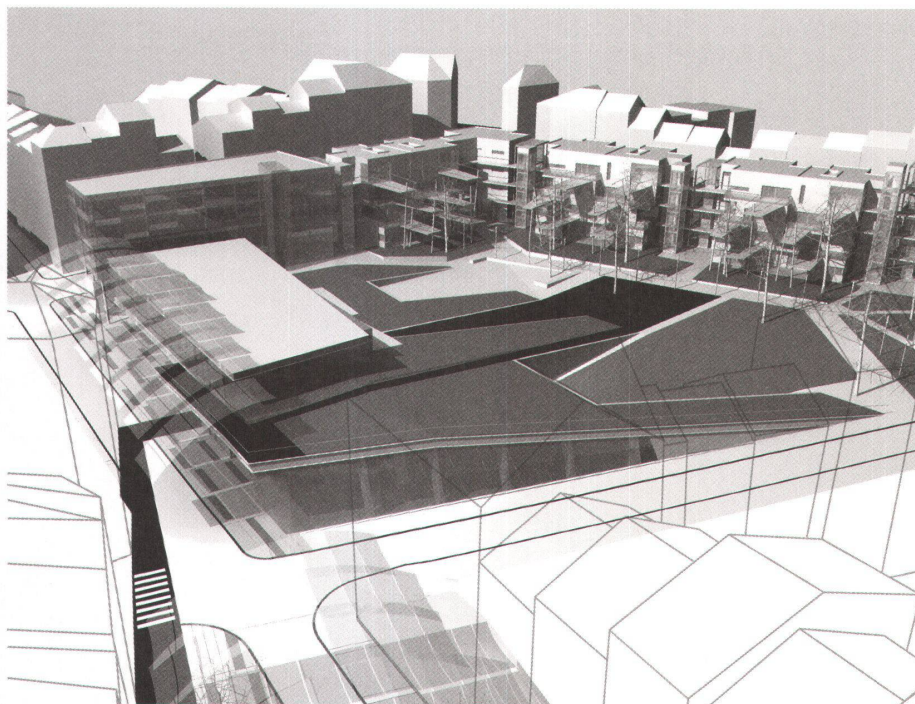
The ETH Library is the provider of the digitised journals. It does not own any copyrights to the journals and is not responsible for their content. The rights usually lie with the publishers or the external rights holders. [See Legal notice.](#)

Download PDF: 16.03.2025

ETH-Bibliothek Zürich, E-Periodica, <https://www.e-periodica.ch>

Inside out

The design blurs the dividing line between inside and outside in the interests of communication between the residents. In the case of the residential building, they introduce an architectural innovation: balconies in the trees. A rich and varied project, professionally presented.



“Out of sight, out of mind” – this proverb is the starting point of the project by Bartłomiej Homiński and Michał Jezierski, two students from the Cracow Polytechnic. This is based on the fact that even the buildings that are easily accessible to everyone often appear inaccessible because they are hidden behind thick walls. The neighboring hall of the Aegidium is the best example of this: seen from the road, it is impossible to guess what is inside it. By way of contrast, the two students from Poland create urban spaces that, although they are clearly defined, have boundaries that are transparent and perforated.

In their design, rue Jourdan, which once used to be defined by the Hôtel des Monnaies, is now spatially determined by a building with an assembly hall, shops and a social center. It is a transparent two-storey building, and the façade of the hall on the street side can even be moved to one side for specific events. A cafeteria and snack bar glazed on three sides on the corner between rue Jourdan and rue de Moscou is a place to see and be seen in. It is located on the visual axis of the Parvis, whose role of market place will be given a new status. The architects also propose a steel roof construction spanned with canvas that extends into the rue Jourdan.

The architects use the terrain ascending from rue Jourdan to rue de l’Hôtel des Monnaies to conceal the multipurpose hall under a sloping roof designed as a park. Interlocking, sloping green areas form a public park rising to rue Jourdan in the interior of the Carré de l’ancien Hôtel des Monnaies. The assembly hall cannot be seen from here, and only the social center is visible as a single-storey pavilion on the edge of rue Jourdan.

The residential buildings frame the park on the opposite side like a brace. The access is in each case inserted as a transparent volume between two buildings. The attractive thing about the apartments is their exterior space, which protrudes like a pier far out into the treetops. Thus persons who are virtually, or completely, unable to leave their apartment find themselves in the middle of the park and able to participate in what is going on round them – a welcome change from the conventional retracted loggias.

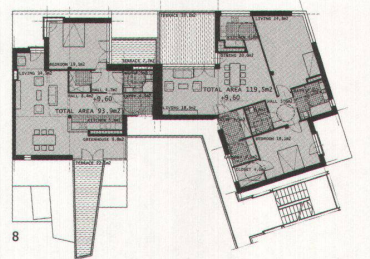
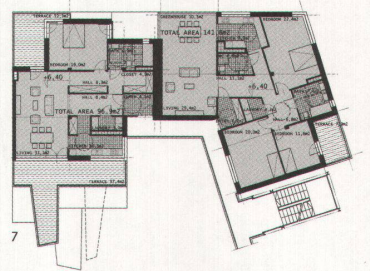
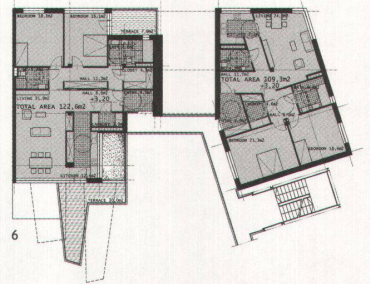
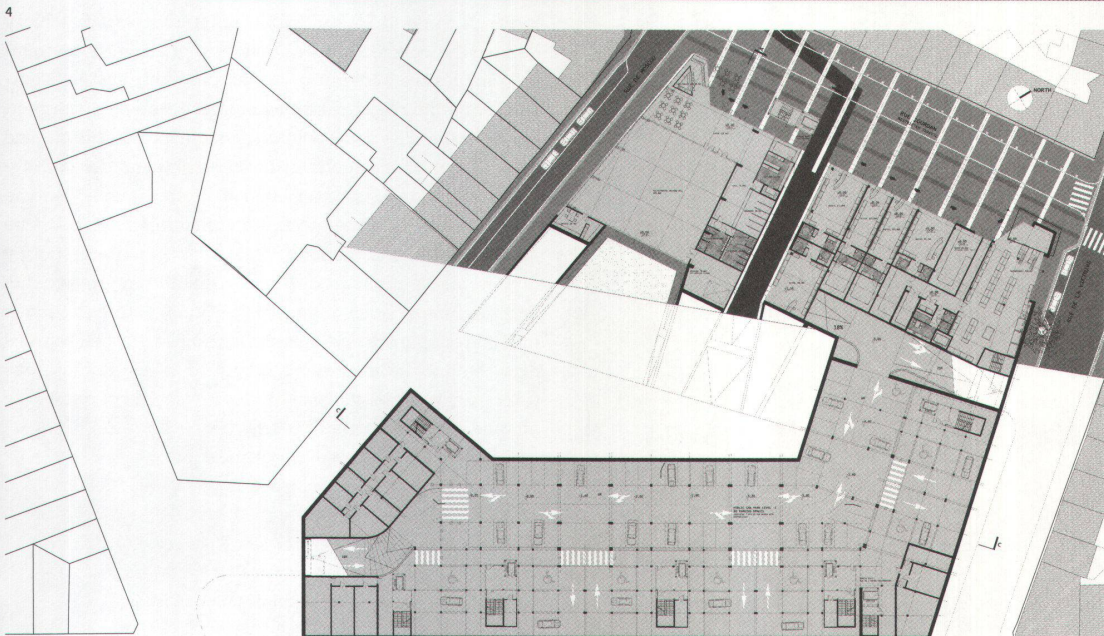
Professional presentation

In this project, accessibility has been interpreted not only as a physical phenomenon, for the apartments are also mentally accessible, providing views from the inside to the outside and from the outside to the inside, thereby overcoming the radical separation of solid walls. The residents are actors in a public spectacle. But the completely glazed assembly hall in the rue Jourdan also invites people to come in and take part in the social life of the neighborhood. The jury liked this principle of accessibility; in particular, they appreciated the innovative contributions to the apartments and the fine details such as the balconies in the trees: “It must be a real pleasure for elderly people to sit in the trees over the public park and chat with their neighbors,” said the jury, and added “The project is rich in content, consistent and well carried through.” •

--> School: Politechnika Krakowska, Wydział Architektury,
(Cracow Polytechnic, department of architecture, Cracow,
Poland)

--> Professor: Andrzej Wyżykowski

--> Students: Bartłomiej Homiński, Michał Jezierski



1 The building with a hall, shops and social center is located in rue Jourdan. The terraced park lies behind it.

2 The residential buildings frame the park like a brace. Long balconies extend into the trees and form a pleasant exterior area to the apartments.

3 A construction spanned with canvas protects the market from sun and rain.

4-5 A hall and shops are placed on the level of rue Jourdan, with a covered garage inserted into the slope. The social center and the apartments are one storey higher up, on the level of the park.

6-8 The apartments are all differently designed. Balconies encourage communication.