

Zeitschrift: Hochparterre : Zeitschrift für Architektur und Design
Herausgeber: Hochparterre
Band: 22 (2009)
Heft: [4]: The essence of architecture : Röthlisberger: swiss quality woodwork

Artikel: The ability to comprehend
Autor: Glanzmann, Lilia
DOI: <https://doi.org/10.5169/seals-123779>

Nutzungsbedingungen

Die ETH-Bibliothek ist die Anbieterin der digitalisierten Zeitschriften. Sie besitzt keine Urheberrechte an den Zeitschriften und ist nicht verantwortlich für deren Inhalte. Die Rechte liegen in der Regel bei den Herausgebern beziehungsweise den externen Rechteinhabern. [Siehe Rechtliche Hinweise.](#)

Conditions d'utilisation

L'ETH Library est le fournisseur des revues numérisées. Elle ne détient aucun droit d'auteur sur les revues et n'est pas responsable de leur contenu. En règle générale, les droits sont détenus par les éditeurs ou les détenteurs de droits externes. [Voir Informations légales.](#)

Terms of use

The ETH Library is the provider of the digitised journals. It does not own any copyrights to the journals and is not responsible for their content. The rights usually lie with the publishers or the external rights holders. [See Legal notice.](#)

Download PDF: 17.03.2025

ETH-Bibliothek Zürich, E-Periodica, <https://www.e-periodica.ch>

THE ABILITY TO COMPREHEND

Please do touch! At his shop for bedroom and bathroom accessories behind Paradeplatz in Zurich, Christian Fischbacher presents unpacked bed-linen. Four years ago, the architects, Trix and Robert Haussmann, renovated the old town building. It was not the first renovation: "In 1977, we refurbished the upper floors for the owner," says Robert Haussmann. "He more or less had a detached house integrated as a design manifesto." This time the task was different: the architects were to create a retail space for home textiles. "We opted for an elegant but unobtrusive interior design", explains Trix Haussmann. "There was to be no competition between interior design and the materials and colours of the textiles." Walls, shelves and the retail area have been covered with vertically processed, Japanese Sen as veneer components. Dark stained oak has been used for the floor and the furniture. There are large mirrors, curtains and upholstered furniture in natural colours as well as four semi-transparent sliding doors opening up to the storage space for sample duvets, pillows and cushions. One of the elements conceals a changing room. The sliding doors are made of satin acrylic panels framed by smoked oak elements on each side. The panels run on visible stainless brushed chrome-nickel steel rollers.

Three striking ceiling lights are eye-catchers. Designed by Robert Haussmann: "The purpose of these lights was to create a mellow atmosphere." The soft light radiating from the large ceiling lights is enhanced by spotlights set in the ceiling. The biggest changes were made by the architects in the front part of the building: they set the entrance back into the house, creating a new façade. "In this way we achieved additional space for the window display," explains Trix Haussmann. More space to "grasp" the bed-linen – provided your hands are clean. Author: Lilia Glanzmann, photos: Jürg Zimmermann

CHRISTIAN FISCHBACHER'S SHOP IN ZURICH, 2004

>Address: Kappelergrasse 1, Zurich

>Client: Christian Fischbacher, St. Gallen

>Architecture: Trix and Robert Haussmann, Zurich

>Interior design procedure: Client order

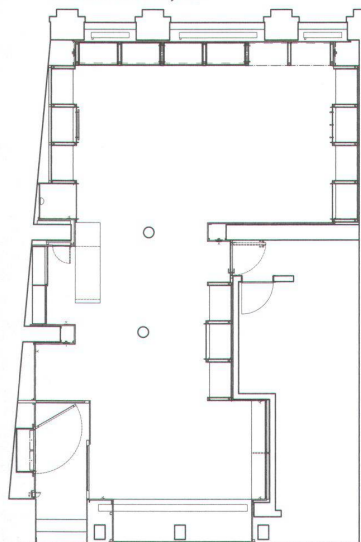
>Interior fit out procedure: Pre-qualification



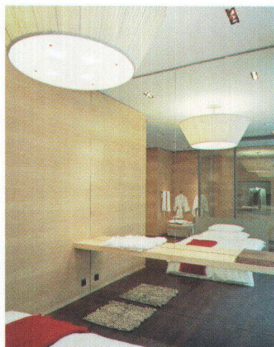
^Wall panels, shop floor and shelves made of simple Japanese Sen ash.



∨Retail area layout.



^The interior is designed not to compete with the textiles on display.



^Warm ceiling lights for a mellow atmosphere.



<The entrance as display window.