

**Zeitschrift:** Hochparterre : Zeitschrift für Architektur und Design  
**Herausgeber:** Hochparterre  
**Band:** 22 (2009)  
**Heft:** [4]: The essence of architecture : Röthlisberger: swiss quality woodwork

**Artikel:** As seen on TV  
**Autor:** Huber, Werner  
**DOI:** <https://doi.org/10.5169/seals-123788>

### **Nutzungsbedingungen**

Die ETH-Bibliothek ist die Anbieterin der digitalisierten Zeitschriften. Sie besitzt keine Urheberrechte an den Zeitschriften und ist nicht verantwortlich für deren Inhalte. Die Rechte liegen in der Regel bei den Herausgebern beziehungsweise den externen Rechteinhabern. [Siehe Rechtliche Hinweise.](#)

### **Conditions d'utilisation**

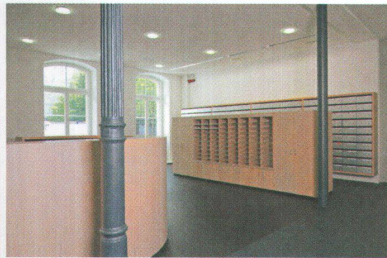
L'ETH Library est le fournisseur des revues numérisées. Elle ne détient aucun droit d'auteur sur les revues et n'est pas responsable de leur contenu. En règle générale, les droits sont détenus par les éditeurs ou les détenteurs de droits externes. [Voir Informations légales.](#)

### **Terms of use**

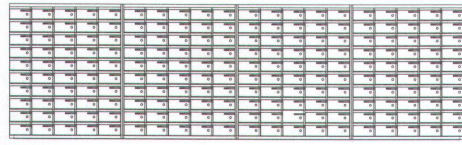
The ETH Library is the provider of the digitised journals. It does not own any copyrights to the journals and is not responsible for their content. The rights usually lie with the publishers or the external rights holders. [See Legal notice.](#)

**Download PDF:** 01.04.2025

**ETH-Bibliothek Zürich, E-Periodica, <https://www.e-periodica.ch>**



∨ Post boxes



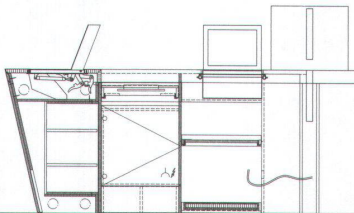
∧ Reception with oak post boxes.



∧ Rows of desks for the media.



∧ Customer service cubicle in the centre.

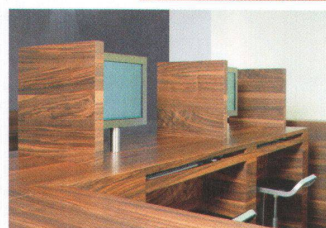


∧ Cross-section: complex cubicle technology.

∨ Elegantly retractable computers.



∨ Partitions offering privacy.



## AS SEEN ON TV

The government set up a separate media centre to leave more space for the confederate councillors in the parliament building. The heart of the media centre is in the 2<sup>nd</sup> basement. In this room with its striking wall painting by Nic Hess, councillors or MPs and representatives of the media sit at wooden desks. They look like simple, oak-veneered cubes but they hide state-of-the-art technology, especially the desks on the platform. The latter are equipped with audio and video facilities including screens, and the outer desks can even be raised to serve as a lectern. Owing to well-organised planning, the building and its facilities come up to the media's expectations – the final decision on technical facilities was long awaited. The architects used the striking oak wood in other places, too, e.g. for cabinets on the conference floor, for the reception desk and for the post boxes on the ground floor. Author: Werner Huber, photos: zVg

MEDIA CENTRE AT BUNDESHAUS (PARLIAMENT), 2006

- ∧ Address: Bundesgasse 8, Berne
- ∧ Client: Bundesamt für Bauten und Logistik, Berne
- ∧ Architecture: IAAG Architekten, Berne
- ∧ Interior fit out procedure: Public tender

## LIKE A BUTTERFLY

Valiant Bank set up a very special branch in Berne, offering customer service on the ground floor and a gallery in the basement. A customer service counter in the centre of the main hall is the most important feature of architect, Andrea Roost's spatial composition. This element serves as an elegant reception area and a bar for art and social events as well as place where bank staff can advise their clients. The wooden construction unfolds like a butterfly, revealing computer terminals and partitions for privacy. There is even a printer. The planners' intention was to create a solid seamless element, and as this could not be made of solid wood (because wood moves), Röthlisberger opted for high-class walnut veneer to create a wooden monolith. The cubicle looks plain and quite robust, but its interior is filled with state-of-the-art technology and mechanical devices down to the last inch. Author: Werner Huber, photos: Alain Bucher

BERATERBANK (ADVISING BANK), 2006

- ∧ Address: Theaterplatz, Berne
- ∧ Client: Valiant Bank, Berne
- ∧ Architecture: Andrea Roost, Berne, assisted by Damian Lisik
- ∧ Interior fit out procedure: Invited competition
- ∧ Colour concept: Jean Pfaff