

Zeitschrift: Mitteilungen schweizerischer Ingenieure und Architekten : auf
Veranstaltung des Vereins Schweizerischer Ingenieure und Architekten

Herausgeber: J.H. Kronauer

Band: 1 (1853)

Heft: 1-2

Autor: [s.n.]

Anhang: Tafeln

Nutzungsbedingungen

Die ETH-Bibliothek ist die Anbieterin der digitalisierten Zeitschriften. Sie besitzt keine Urheberrechte an den Zeitschriften und ist nicht verantwortlich für deren Inhalte. Die Rechte liegen in der Regel bei den Herausgebern beziehungsweise den externen Rechteinhabern. [Siehe Rechtliche Hinweise.](#)

Conditions d'utilisation

L'ETH Library est le fournisseur des revues numérisées. Elle ne détient aucun droit d'auteur sur les revues et n'est pas responsable de leur contenu. En règle générale, les droits sont détenus par les éditeurs ou les détenteurs de droits externes. [Voir Informations légales.](#)

Terms of use

The ETH Library is the provider of the digitised journals. It does not own any copyrights to the journals and is not responsible for their content. The rights usually lie with the publishers or the external rights holders. [See Legal notice.](#)

Download PDF: 26.11.2024

ETH-Bibliothek Zürich, E-Periodica, <https://www.e-periodica.ch>

Fig. 2

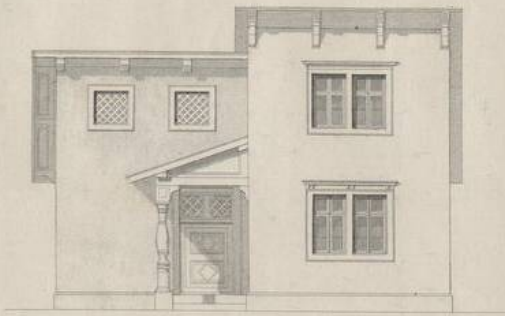


Fig. 4

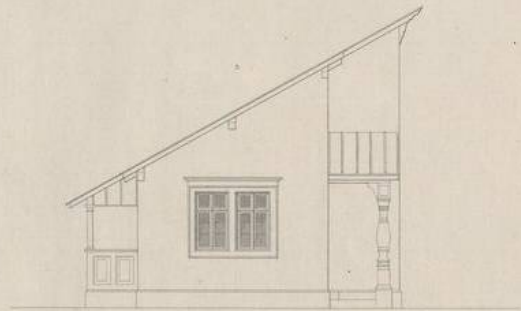


Fig. 3

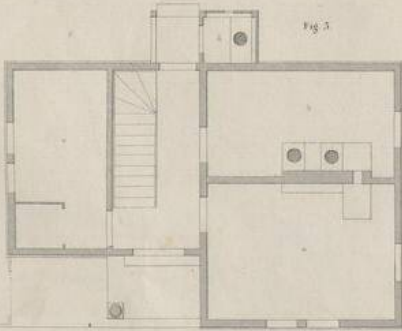
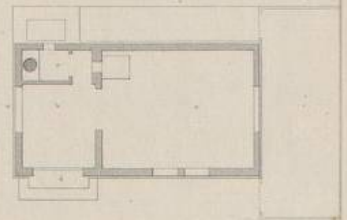


Fig. 1



Fig. 2



Erzuchtgegeben v. J. H. Krenner

Lith. Anstalt v. J. Wurster u. Comp. in Winterthur

BAHNWARTHÄUSER.

Fig. 1

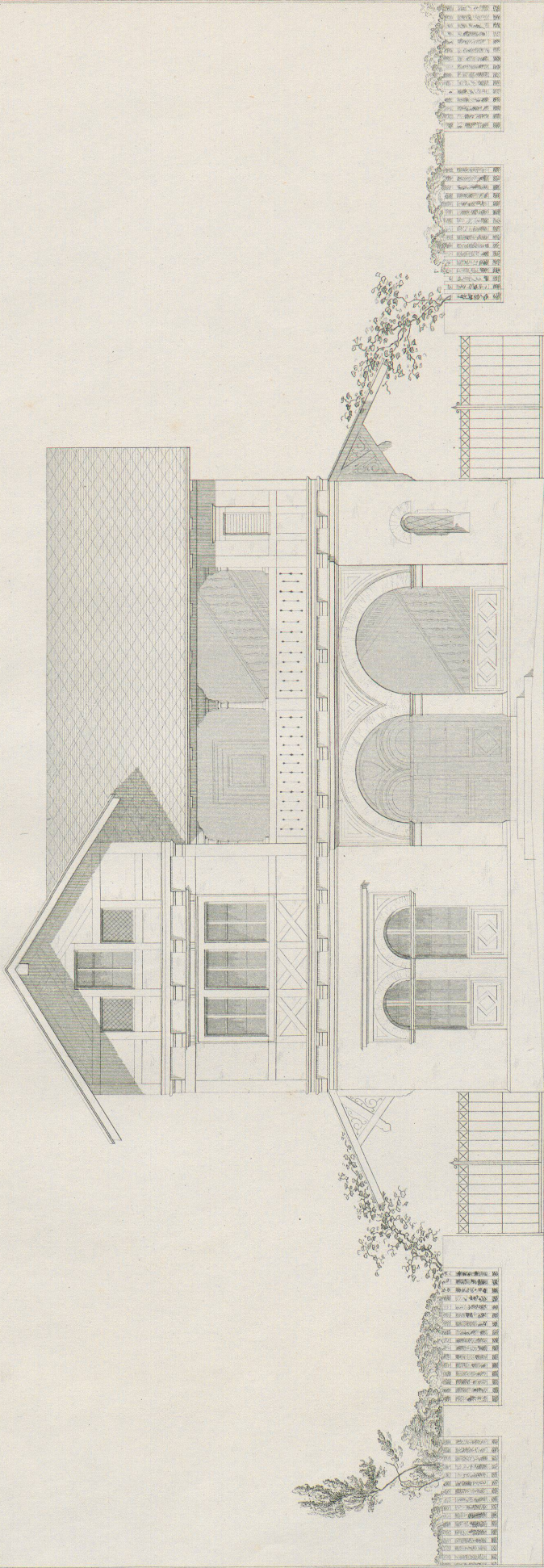
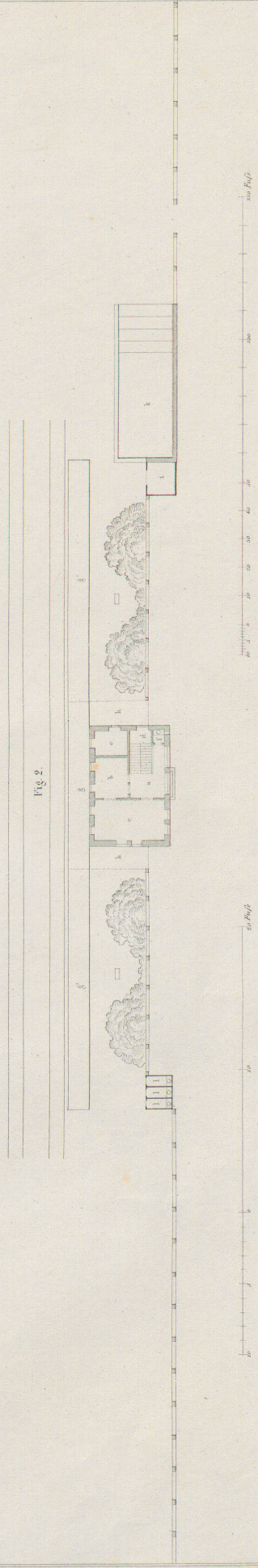


Fig. 2



STATIONSHAUS ZWEITEN RANGES.
 (für den Cant. Thurgau.)

Fig. 1.

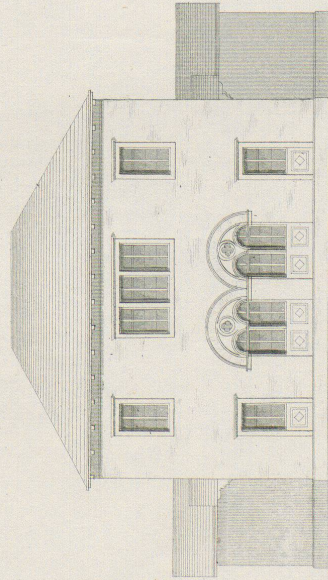


Fig. 2.

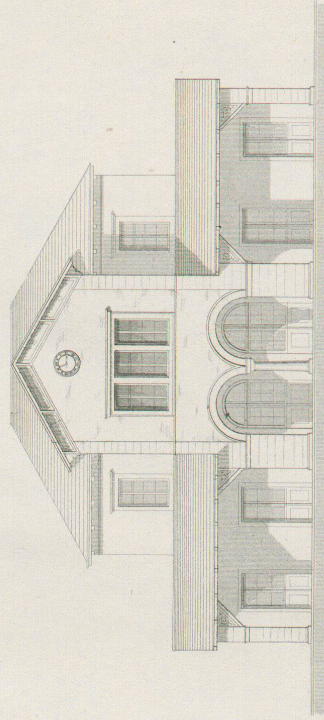
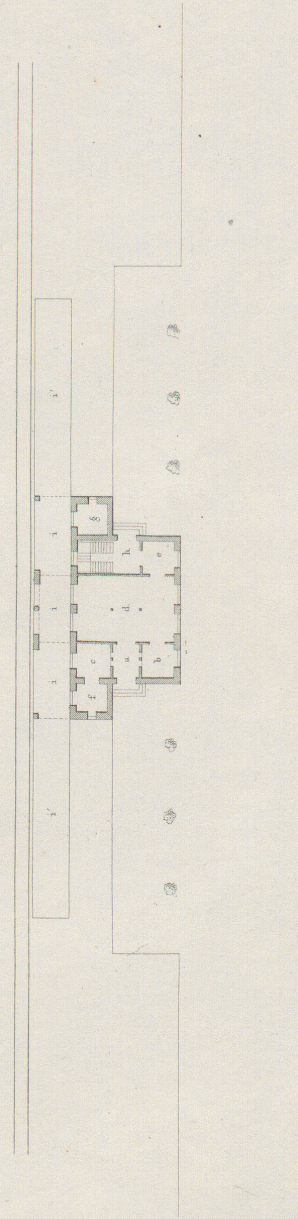


Fig. 3.

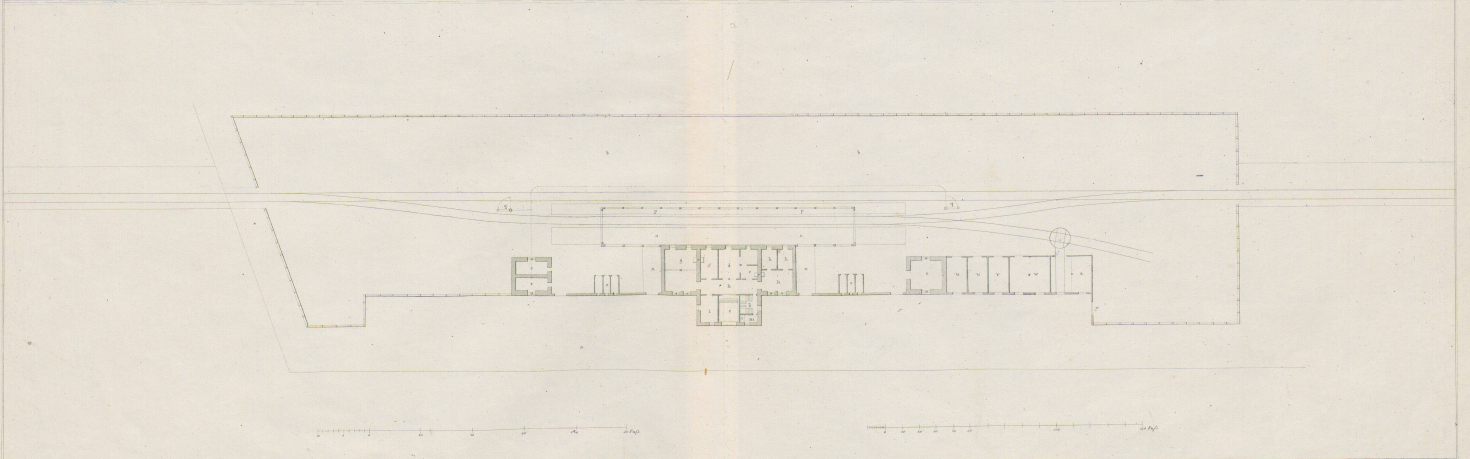
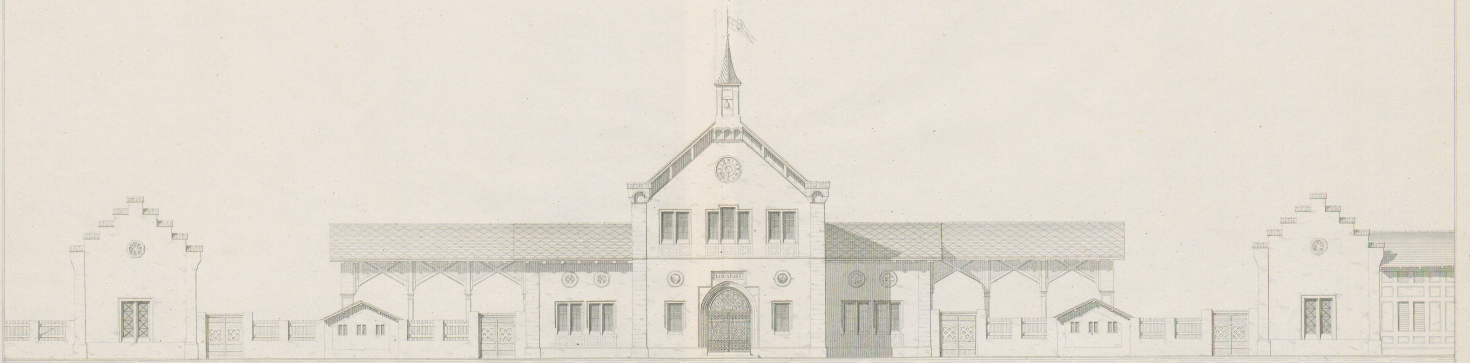


Masstab zu Fig. 1 u. 2



Masstab zu Fig. 3.





Verfertigt von J. R. Kraemer.

BAHNHOF FÜR WEINFELDEN

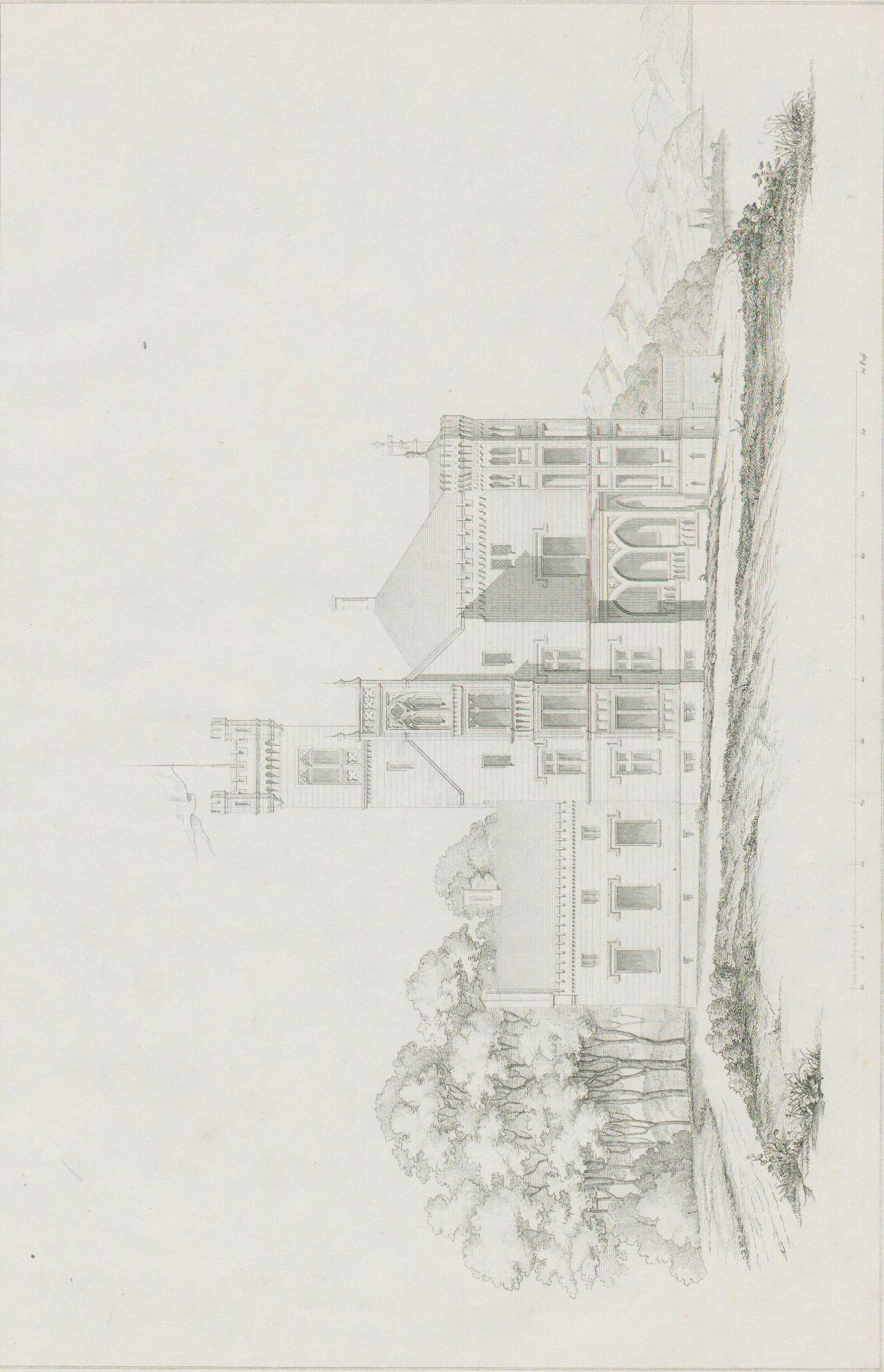
Leit. Saecht & Winter u. Comp. in Winterthur.

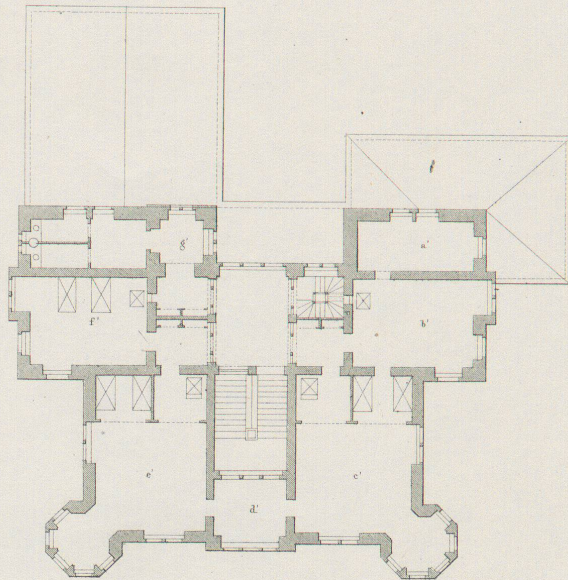


Herausgegeben von J. H. Krummer.

PROJECT ZU EINEM KLEINEN SCHLOSSE.
bei Lindau am Bodensee.

Lith. Anstalt v. J. Wurster u. Comp. in Winterthur.

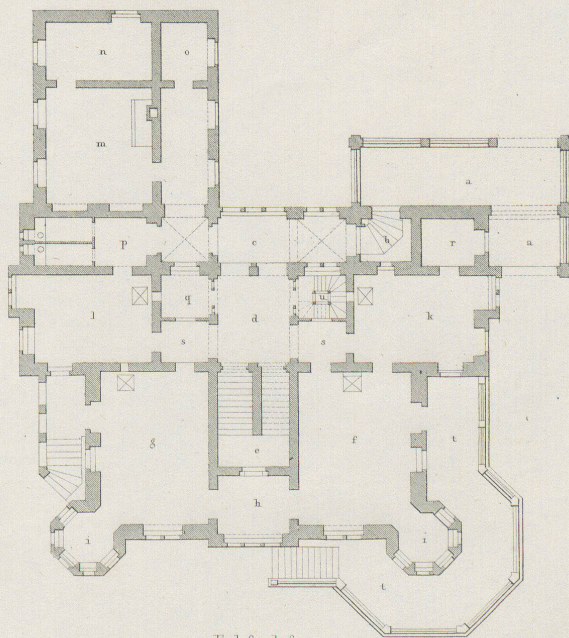




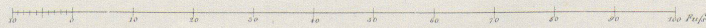
Erster Stock

- a Bedeckte Unterfahrt.
- b Eingang.
- c Corridor.
- d Vestibule.
- e Haupttreppe.
- f Salon.
- g Speisezimmer.
- h Cabinet.
- i Ecker.
- k Wohnzimmer.
- l Diensthofstube.
- m Küche.
- n Speisekammer.
- o Bedientenzimmer.

- p Abtritte.
- q Garderobe.
- r Cabinet.
- s Passage.
- t Terrasse.
- u Diensttreppe.
- a' Bibliothek.
- b' Schreibzimmer.
- c' Schlafzimmer d. Herrschaft.
- d' Cabinet.
- e' Fremdenzimmer.
- f' id.
- g' Thurm.



Erd-Geschoß



1/300 d. v. J. v.

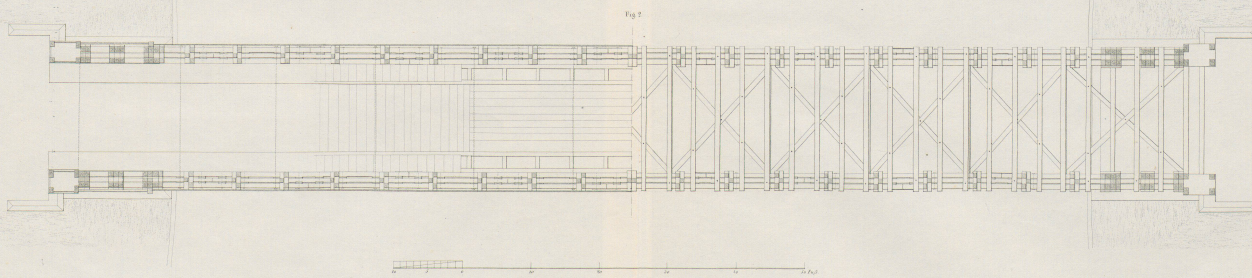
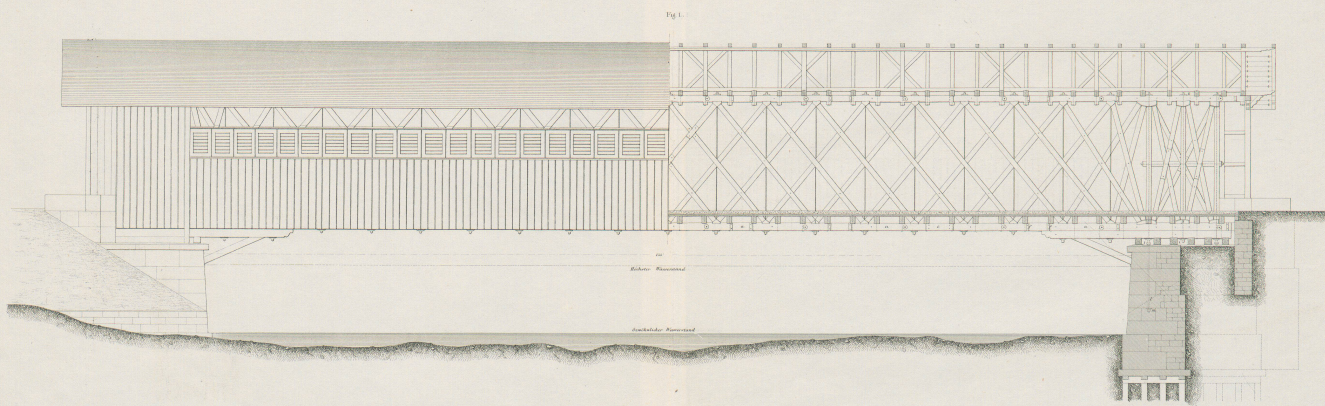


Fig. 4.

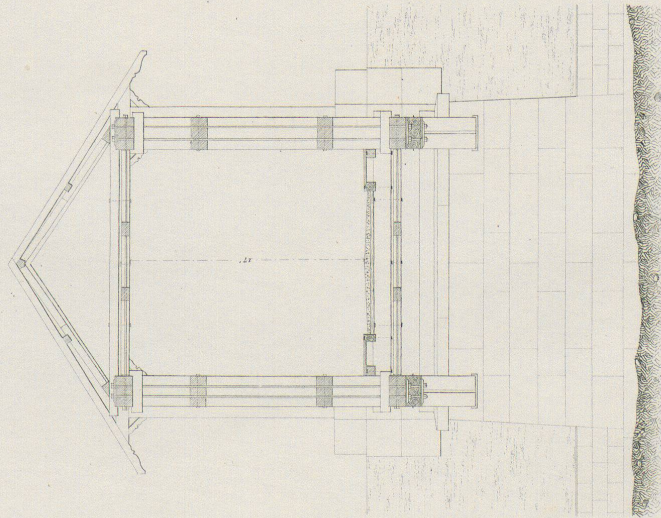


Fig. 5.

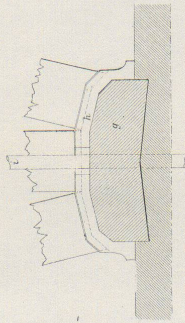
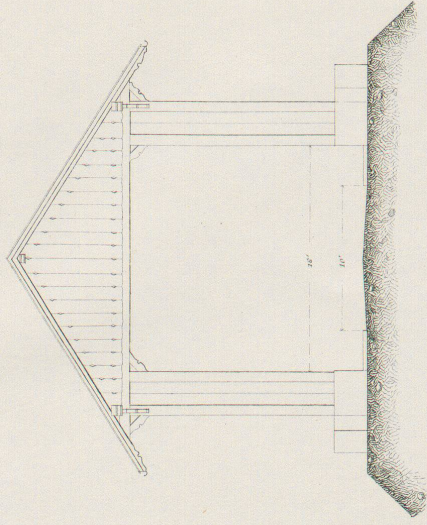


Fig. 7.

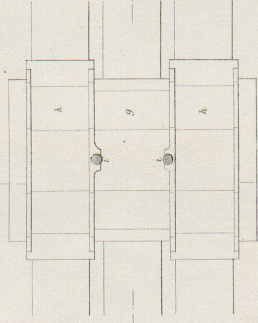


Fig. 8.

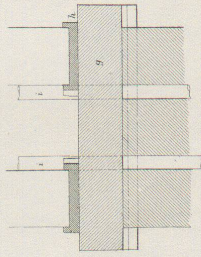


Fig. 9.

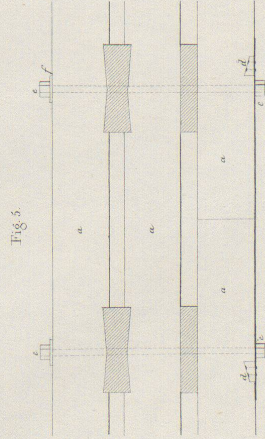


Fig. 5.

Masstab zu Fig. 5 u. 6

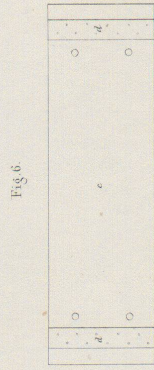
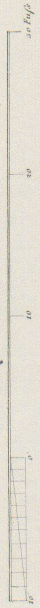


Fig. 6.

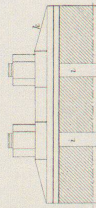


Fig. 10.

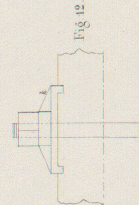


Fig. 11.



Fig. 12.

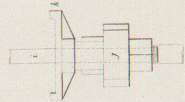


Fig. 13.

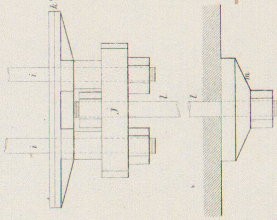


Fig. 14.

Fig. 16.

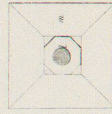
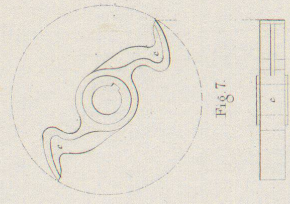
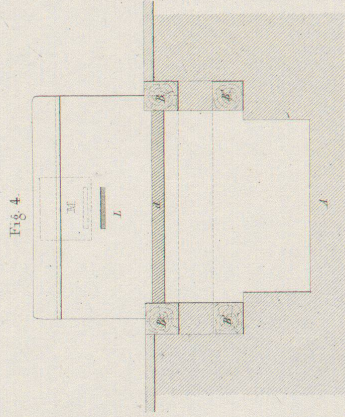
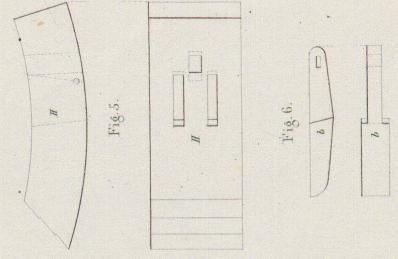
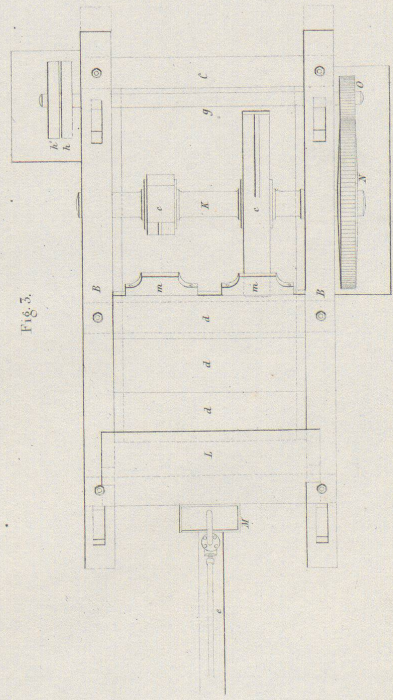
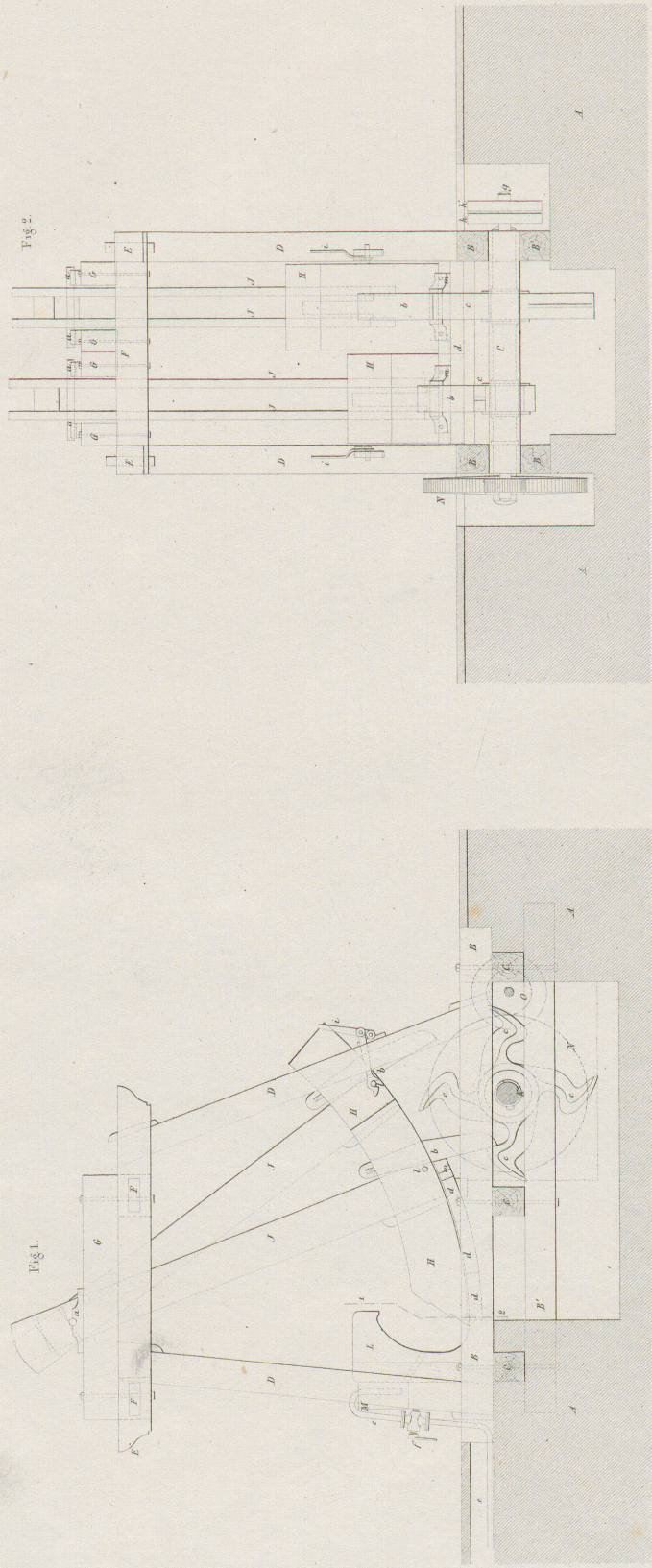


Fig. 17.

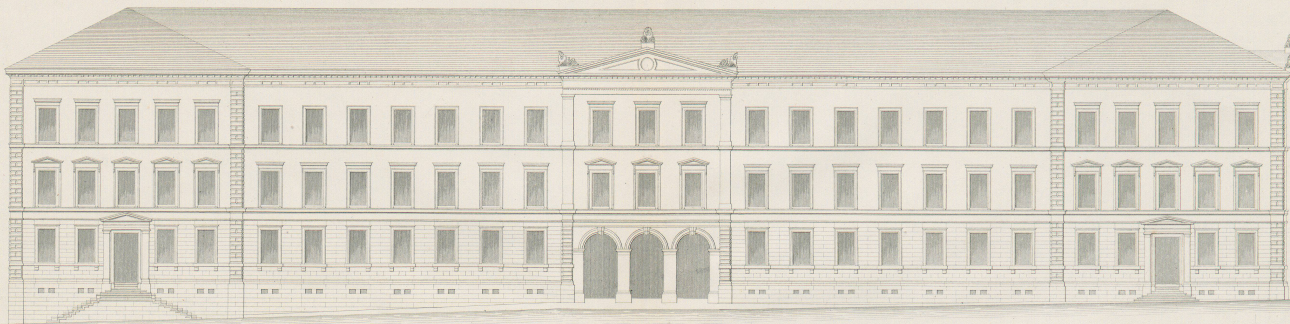
Masstab zu Fig. 5-17.



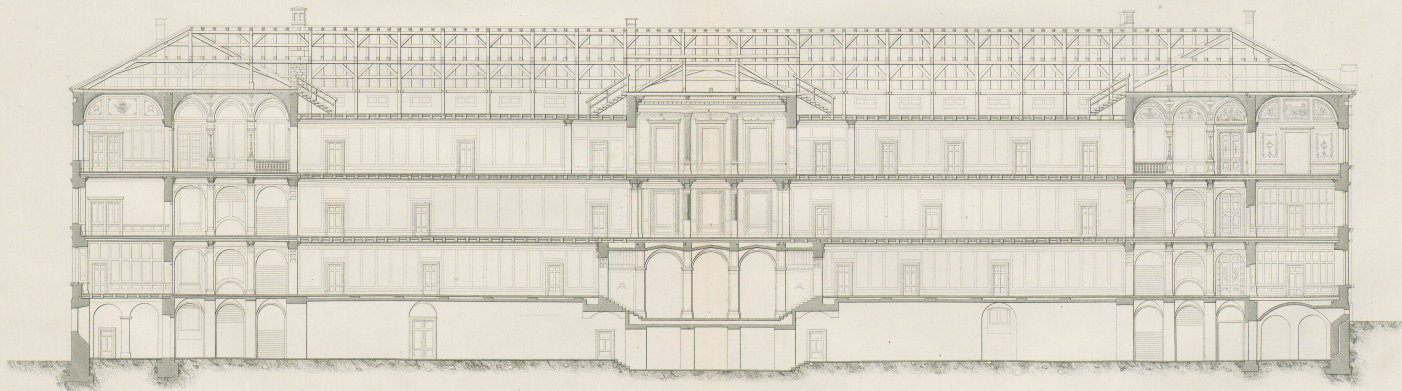


Maßstab

Schwarz-Pap.

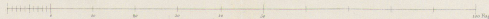


Hauptfacade (gegen Nord)



Längenschnitt durch die Mitte des Gebäudes

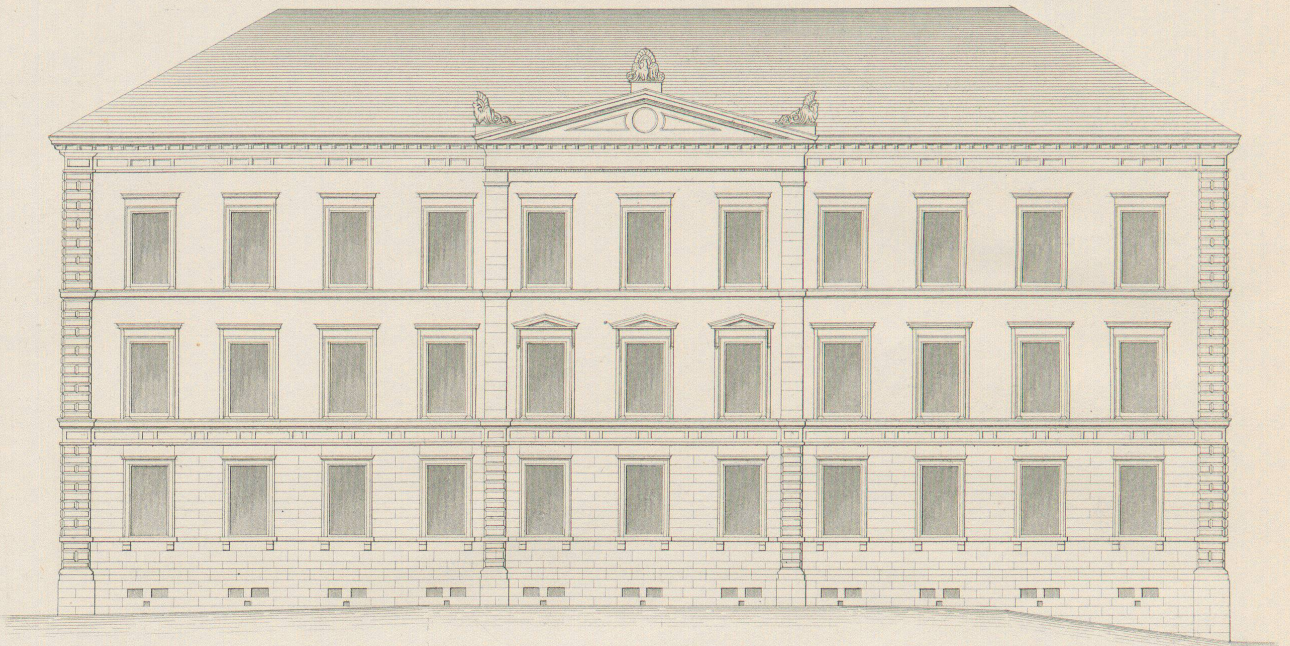
Masstab 1:100



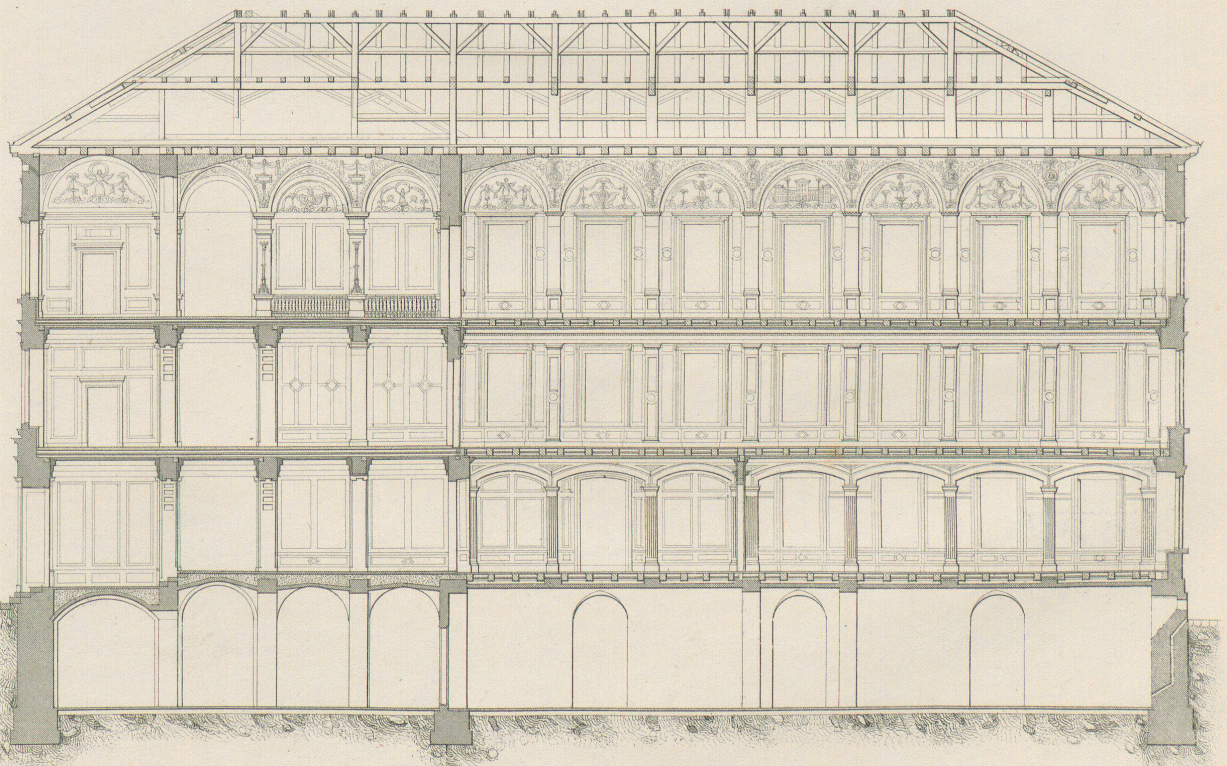
Herausgegeben von J.H. Kraussner

SCHUL-UND BIBLIOTHEK-GEBÄUDE IN ST. GALLEN
von F. W. Kuhnli

Lith. Anstalt v. J. W. Manzoni u. Comp. in Winterthur



Seitenfàçade (gegen West)

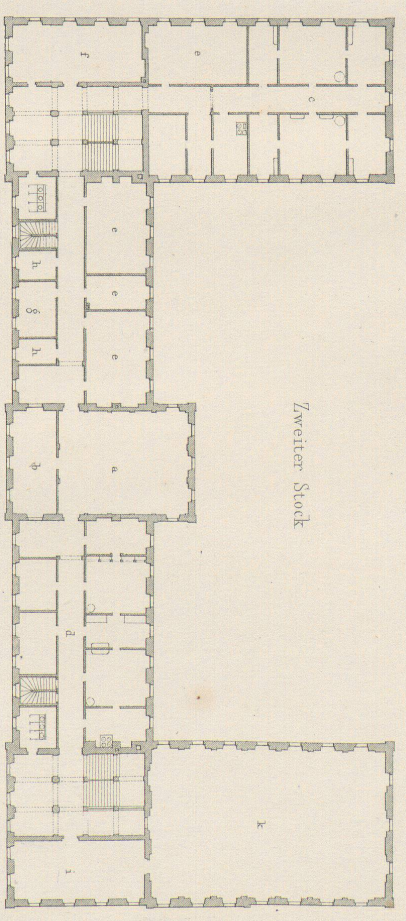
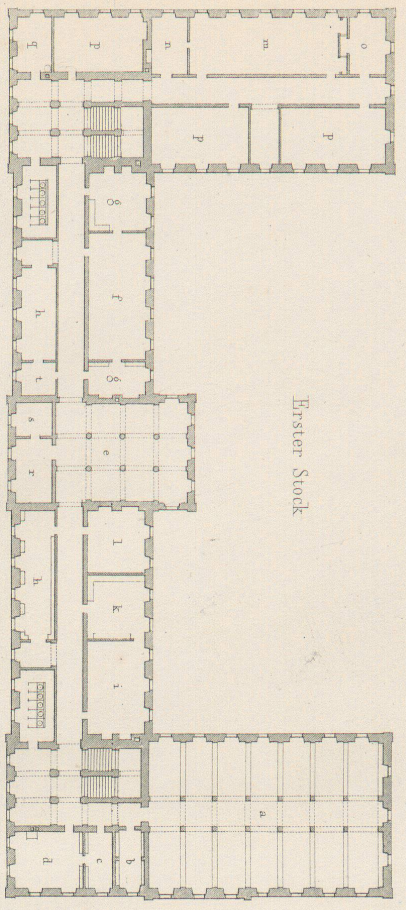
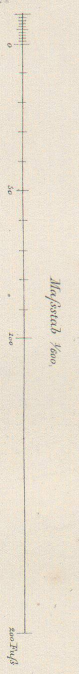
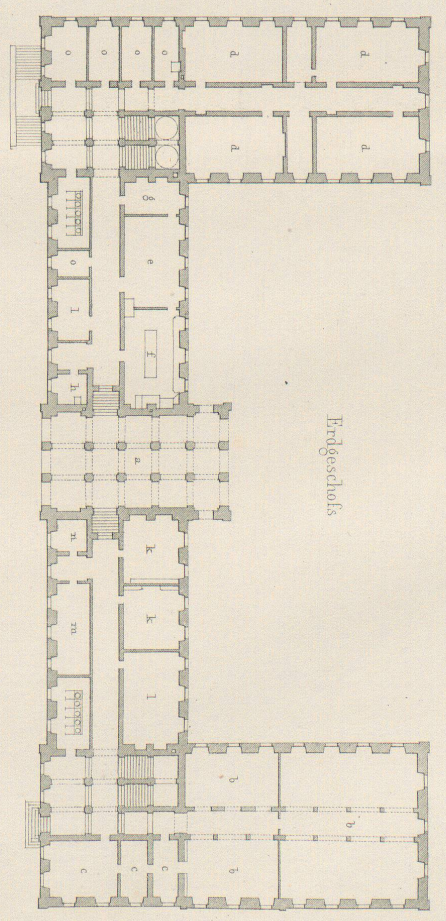
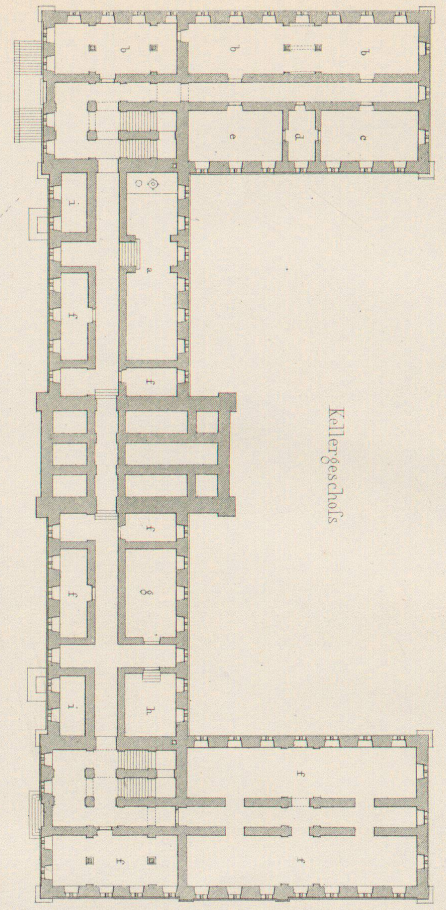


Längenschnitt durch den westl. Flügel.

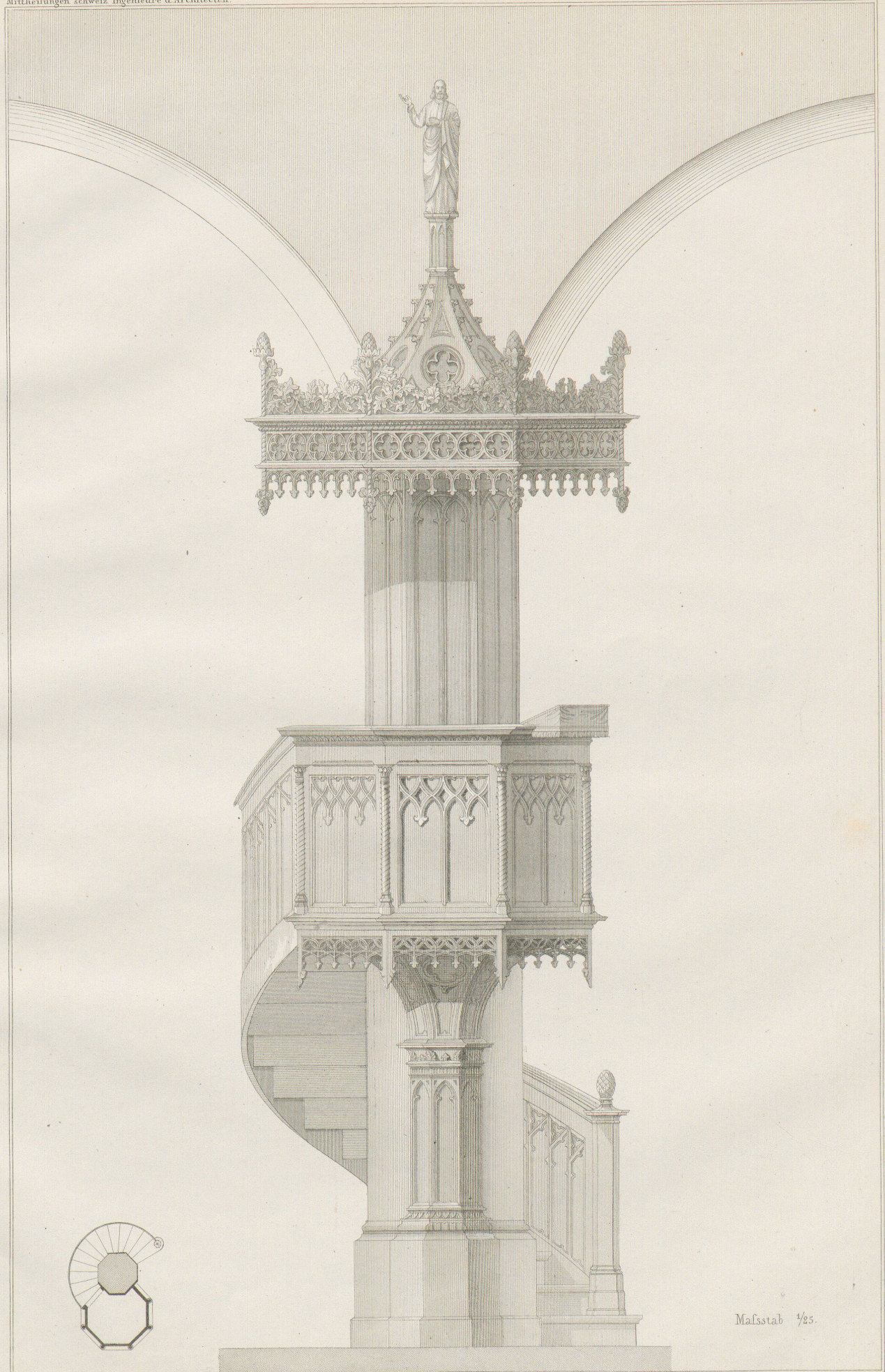
Maßstab 1/200



Grundpläne



SCHUL- UND BIBLIOTHEK GEBÄUDE IN S^t GALLEN
 von F. W. KUBLI.

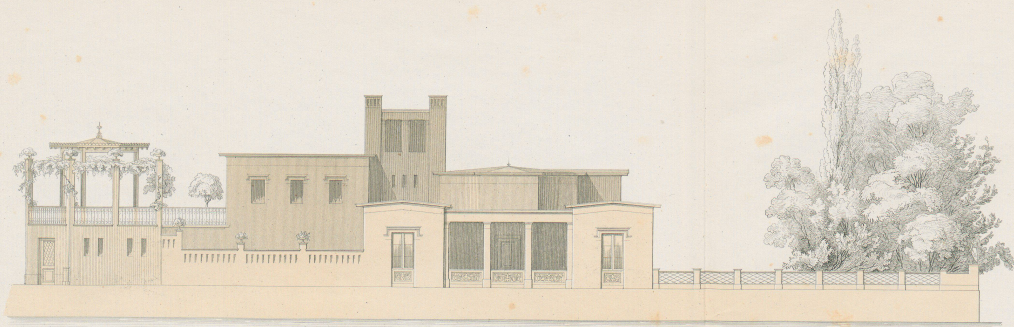


Herausgegeben von J.H. Kronauer

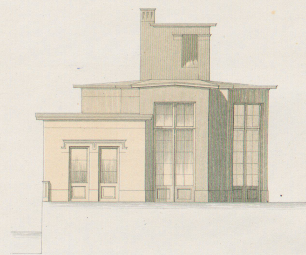
Lith. Anstalt v. J. Wurster u. Comp. in Winterthur.

KANZEL IN DER STADTKIRCHE ZU WINTERTHUR
von Ferdinand Stadler.

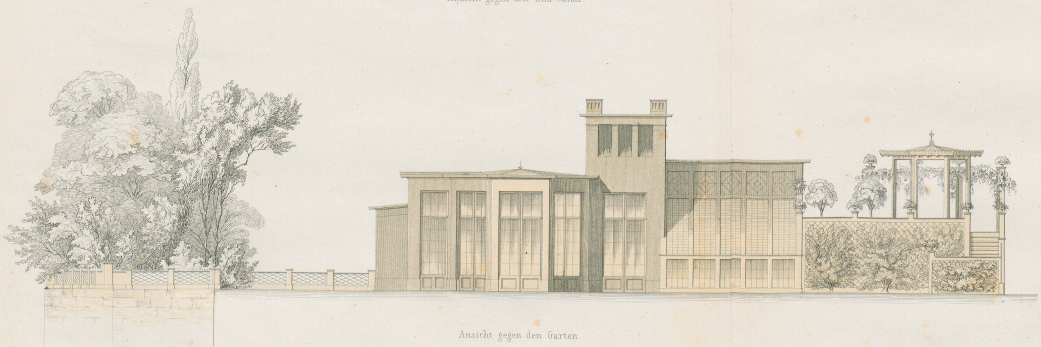
Maßstab 1/25.



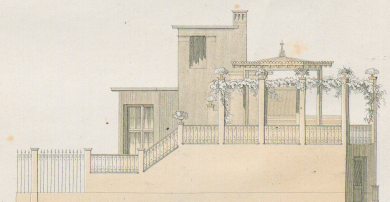
Ansicht gegen den Süd-Canal.



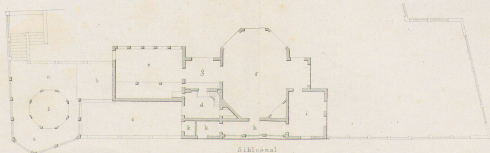
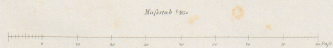
Gegen den Schanzengraben.



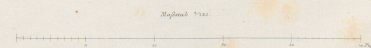
Ansicht gegen den Garten.



Gegen die Thalasse.



Südsaal Grundplan



Herausgegeben von J. H. Krenauer

ORANGERIE MIT KLEINEM GEMÄCHSHAUSE
von J. Brechtner, Architect.

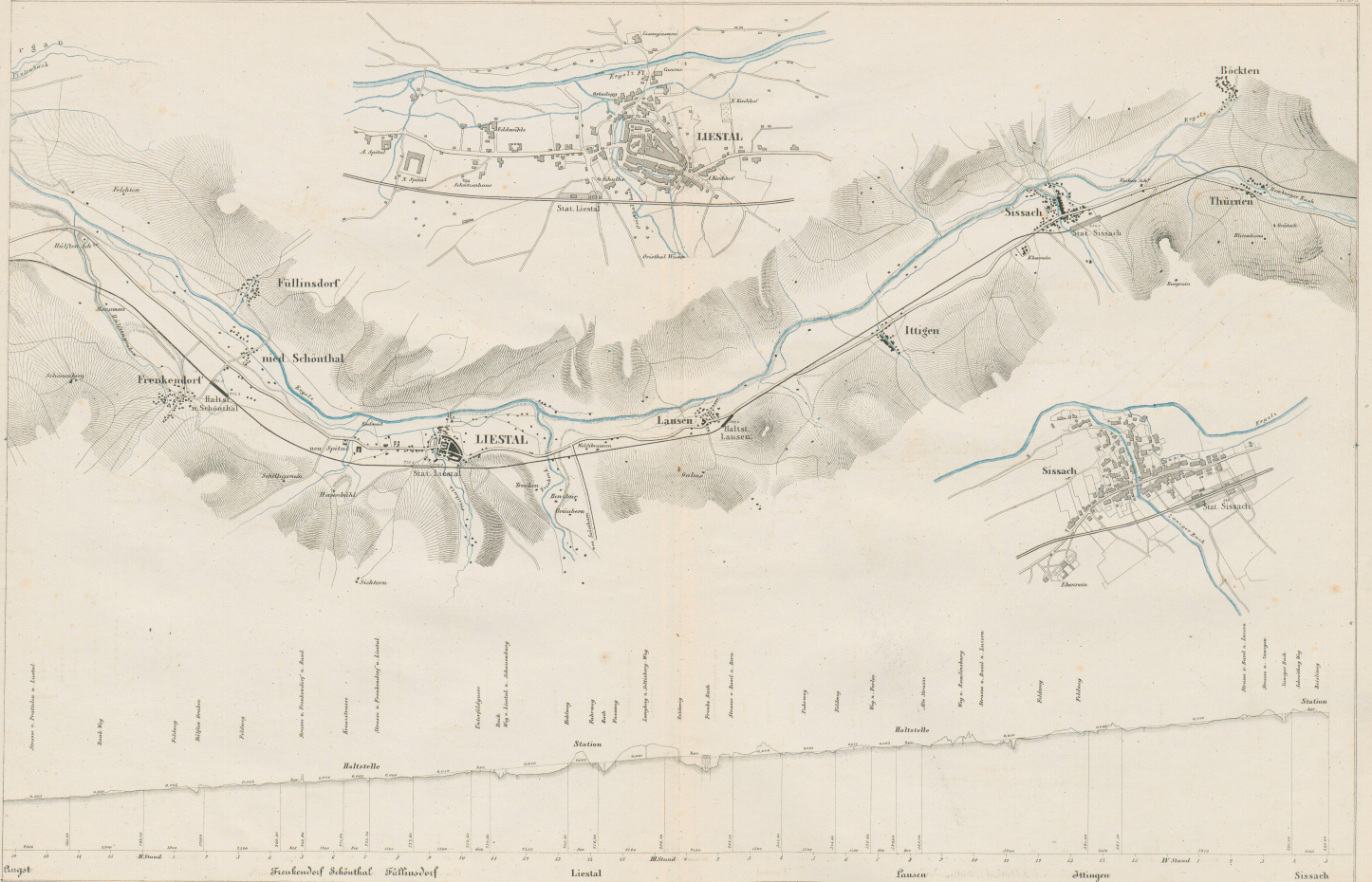
Lith. Anstalt v. J. Wurster u. Comp. in Wittenberg

KARTE der Schweizerischen Centralbahn 1^{re} Section Basel - Sissach.

Maßstab für die Karte und des Längsprofil.
1:10000 für die Karte
1:20000 für die Längs-
Maßstab zu den Situationsplänen.
1:10000
Die im Plan angezeichneten Höhen beziehen sich
alle auf die Nullhöhe der Rhodanersee im Fund.



Herausgegeben v. J. H. Knecht.



Top. Anstalt v. J. Wurster u. Comp. in Winterthur