

**Zeitschrift:** Parkett : the Parkett series with contemporary artists = Die Parkett-Reihe mit Gegenwartskünstlern

**Herausgeber:** Parkett

**Band:** - (1993)

**Heft:** 35: Collaboration Gerhard Richter

**Artikel:** Gerhard Richter : edition for Parkett

**Autor:** Richter, Gerhard

**DOI:** <https://doi.org/10.5169/seals-680101>

### **Nutzungsbedingungen**

Die ETH-Bibliothek ist die Anbieterin der digitalisierten Zeitschriften. Sie besitzt keine Urheberrechte an den Zeitschriften und ist nicht verantwortlich für deren Inhalte. Die Rechte liegen in der Regel bei den Herausgebern beziehungsweise den externen Rechteinhabern. [Siehe Rechtliche Hinweise.](#)

### **Conditions d'utilisation**

L'ETH Library est le fournisseur des revues numérisées. Elle ne détient aucun droit d'auteur sur les revues et n'est pas responsable de leur contenu. En règle générale, les droits sont détenus par les éditeurs ou les détenteurs de droits externes. [Voir Informations légales.](#)

### **Terms of use**

The ETH Library is the provider of the digitised journals. It does not own any copyrights to the journals and is not responsible for their content. The rights usually lie with the publishers or the external rights holders. [See Legal notice.](#)

**Download PDF:** 04.04.2025

**ETH-Bibliothek Zürich, E-Periodica, <https://www.e-periodica.ch>**

## **EDITION FOR PARKETT GERHARD RICHTER**

**GRÜN-BLAU-ROT, 789-1 bis 789-115, 1993,**

**Öl auf Leinwand, je 30 x 40 cm**

**Edition von 115 Originalen, rückseitig nummeriert und signiert.**

**GREEN-BLUE-RED, 789-1 to 789-115, 1993,**

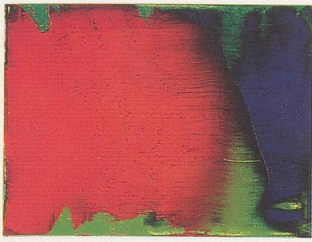
**oil on canvas, 11<sup>7</sup>/<sub>8</sub> x 15<sup>3</sup>/<sub>4</sub>" each**

**Edition of 115 originals, signed and numbered on verso.**

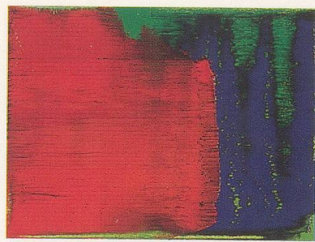
Jede Nummer der Zeitschrift entsteht in Collaboration mit einem Künstler oder einer Künstlerin, der oder die eigens für die Leser von Parkett einen Originalbeitrag gestalten. Dieses Werk ist in der gesamten Auflage abgebildet und zusätzlich in einer limitierten und signierten Vorzugsausgabe erhältlich.

*Each issue of the magazine is created in collaboration with an artist, who contributes an original work specially made for the readers of Parkett. The work is reproduced in the regular edition. It is also available in a signed and limited Special Edition.*

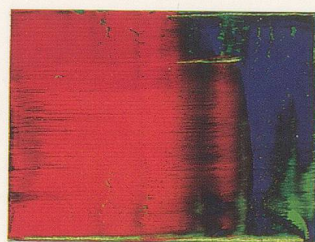
**(Alle Photos: Friedrich Rosenstiel)**



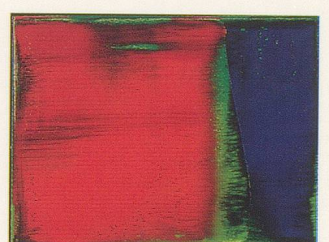
789-1



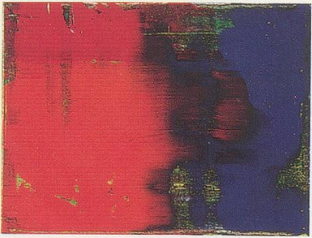
2



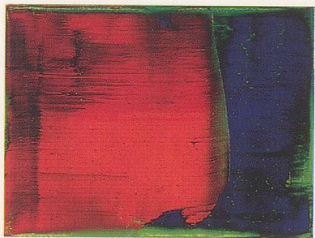
3



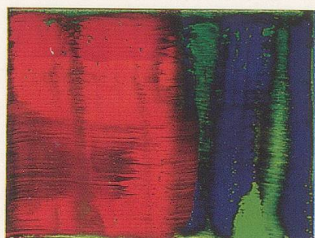
4



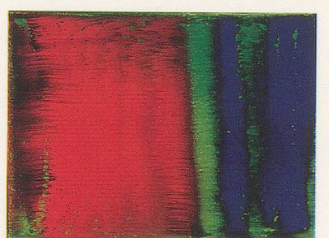
5



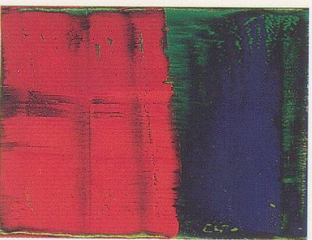
6



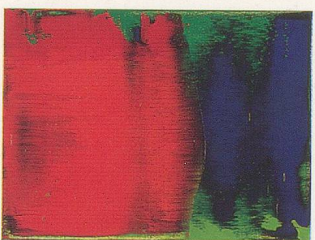
7



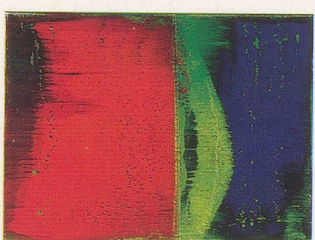
8



9



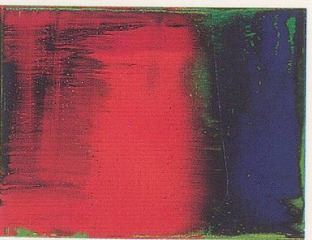
10



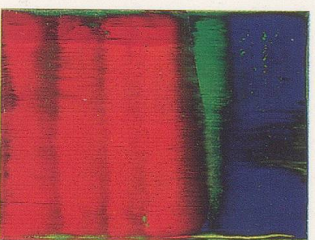
11



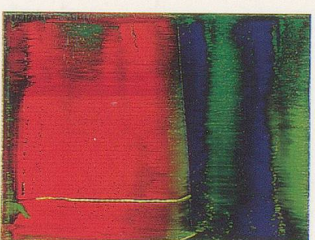
12



13



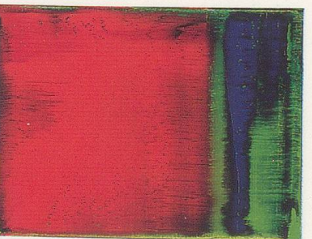
14



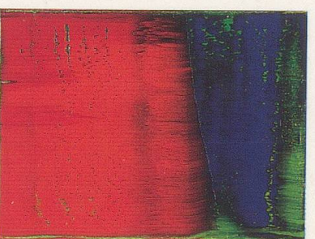
15



16



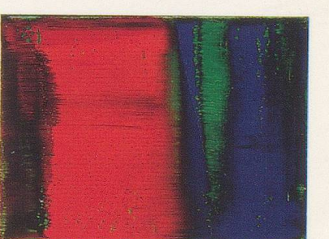
17



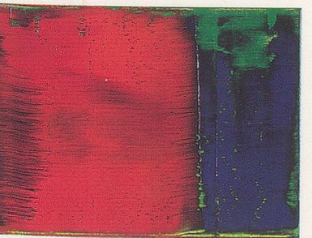
18



19



20



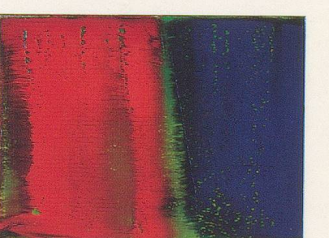
21



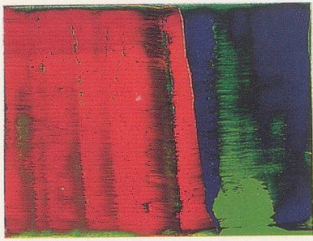
22



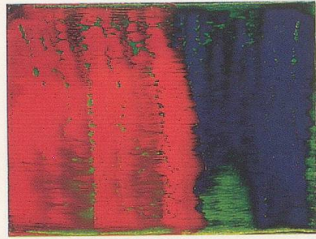
23



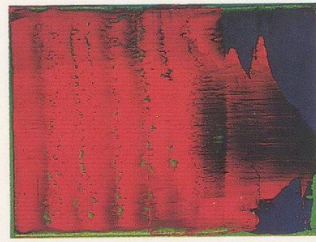
24



25



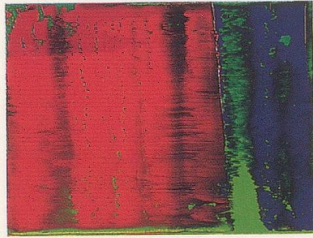
26



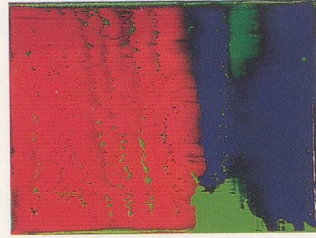
27



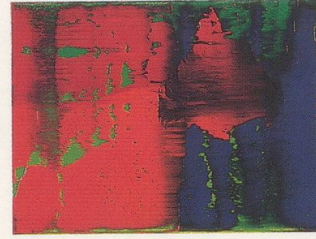
28



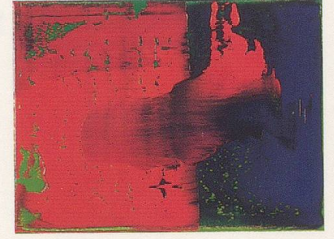
29



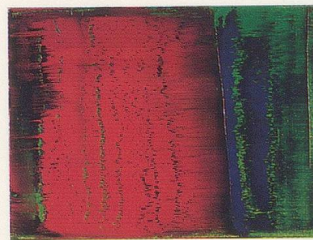
30



31



32



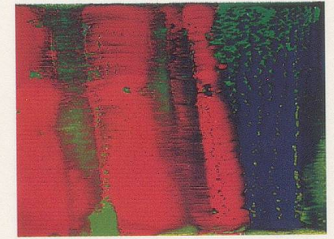
33



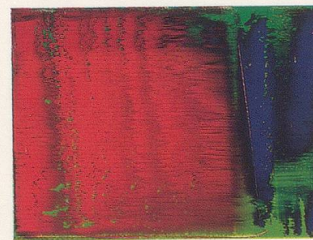
34



35



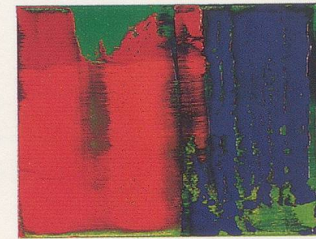
36



37



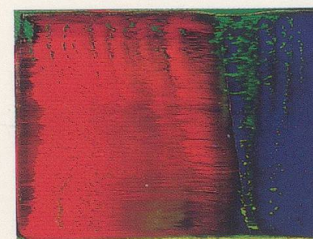
38



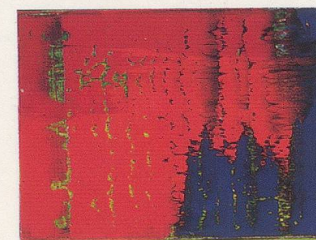
39



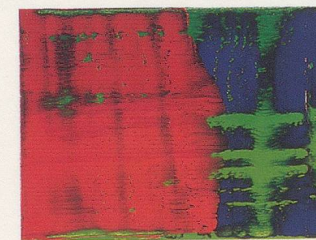
40



41



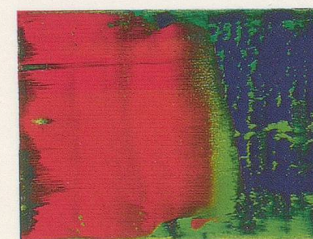
42



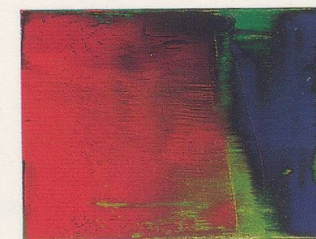
43



44



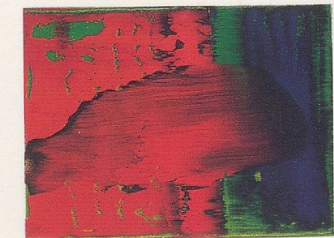
45



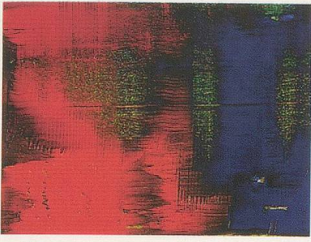
46



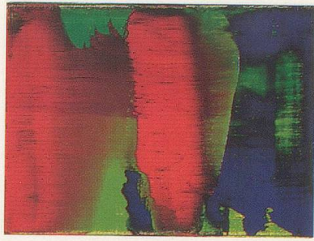
47



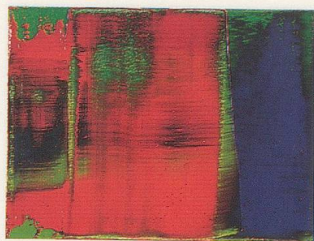
48



49



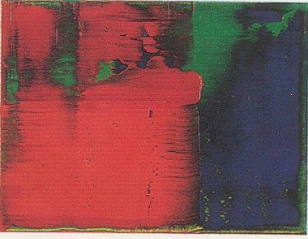
50



51



52



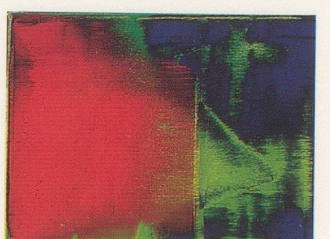
53



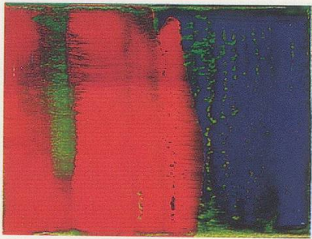
54



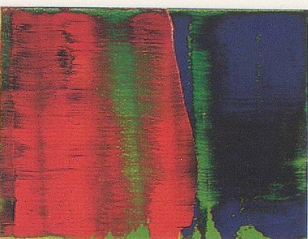
55



56



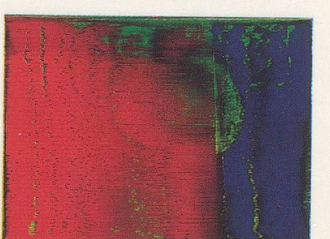
57



58



59



60



61



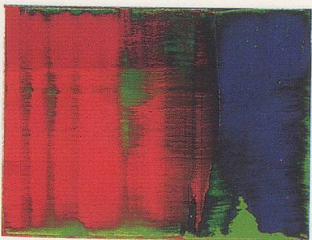
62



63



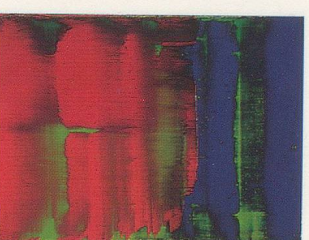
64



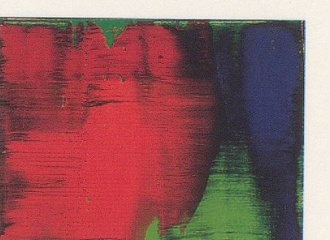
65



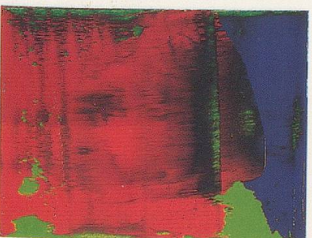
66



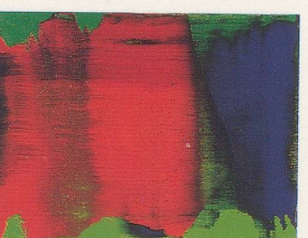
67



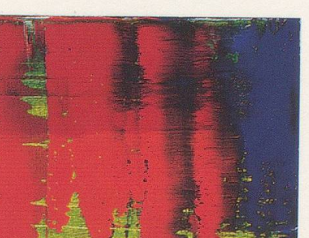
68



69



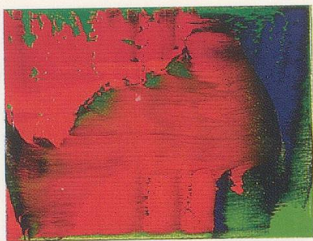
70



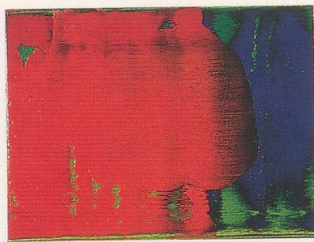
71



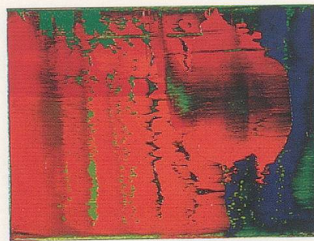
72



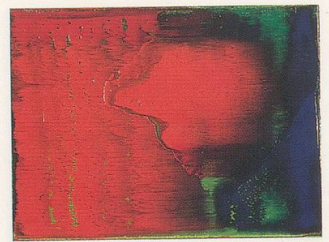
73



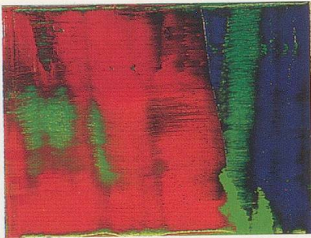
74



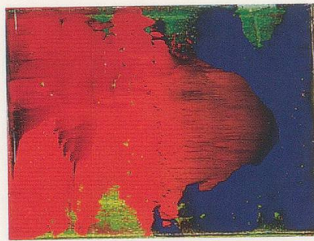
75



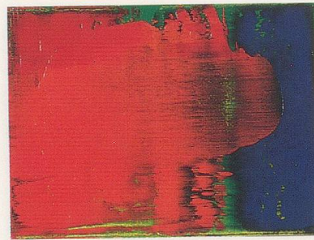
76



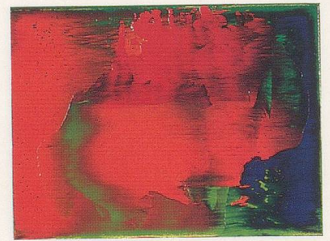
77



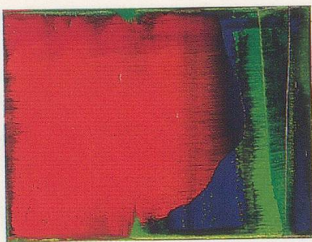
78



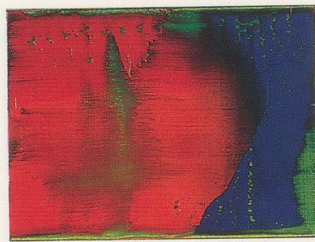
79



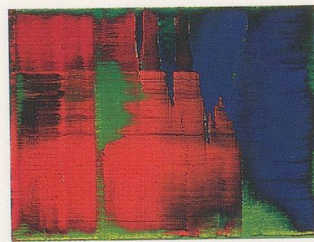
80



81



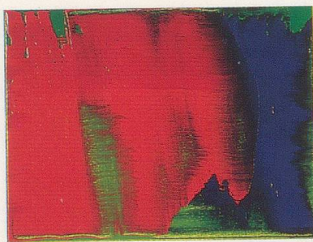
82



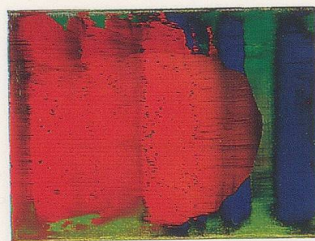
83



84



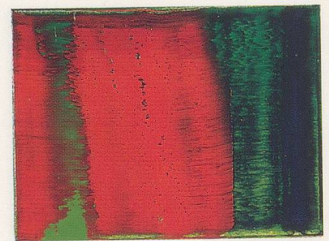
85



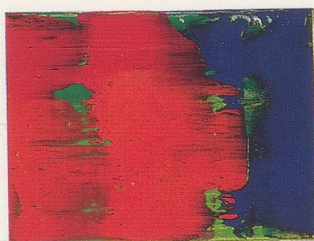
86



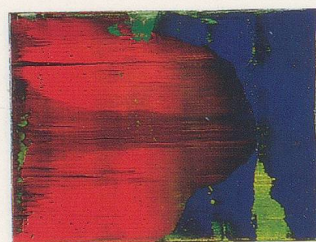
87



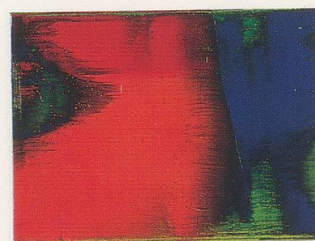
88



89



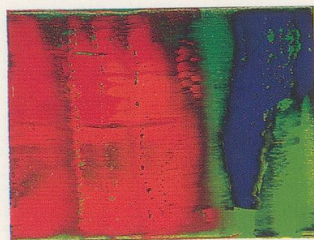
90



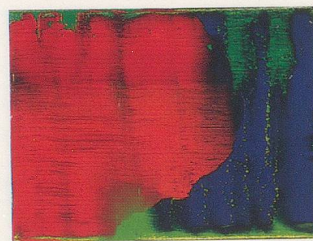
91



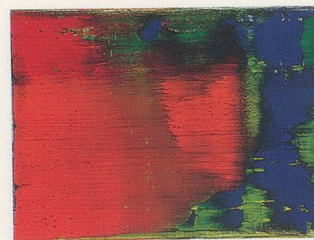
92



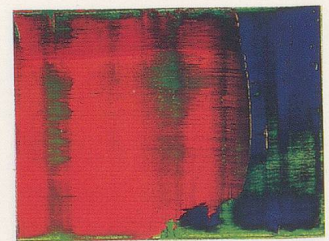
93



94



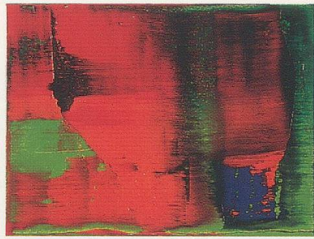
95



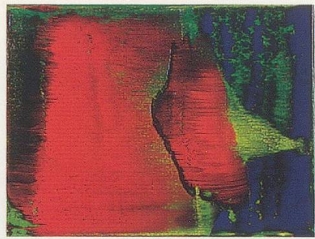
96



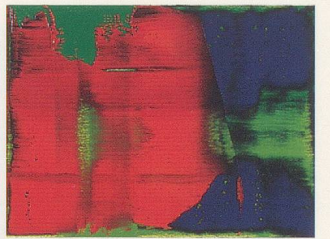
97



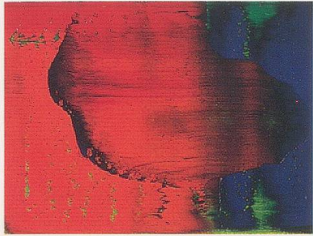
98



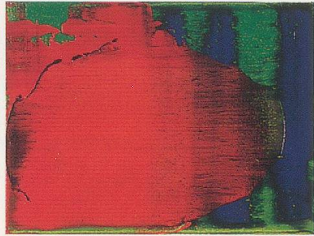
99



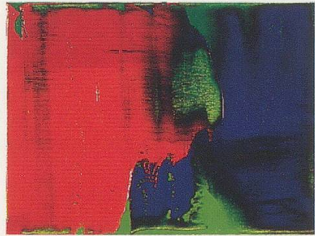
100



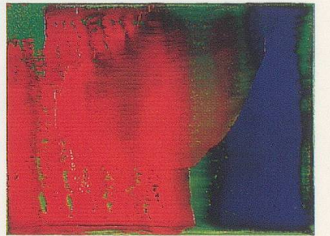
101



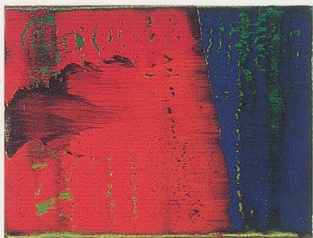
102



103



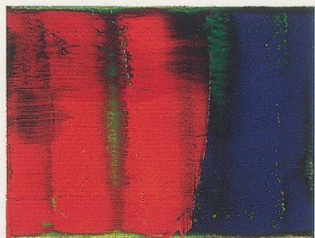
104



105



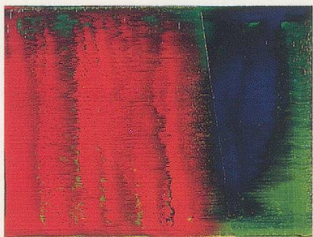
106



107



108



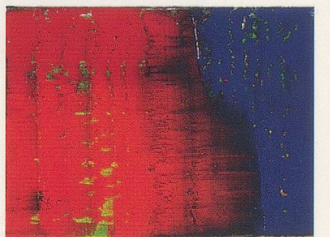
109



110



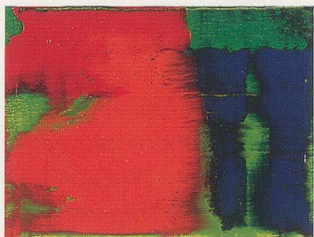
111



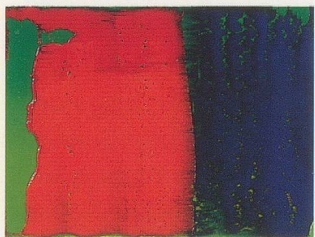
112



113



114



115