

**Zeitschrift:** Mitteilungen der Schweizerischen Entomologischen Gesellschaft =  
Bulletin de la Société Entomologique Suisse = Journal of the Swiss  
Entomological Society

**Herausgeber:** Schweizerische Entomologische Gesellschaft

**Band:** 88 (2015)

**Heft:** 3-4

**Artikel:** DNA barcoding of the potter wasp genus *Eumenes* Latreille, 1802  
(Hymenoptera : Vespidae : Eumeninae) in Switzerland

**Autor:** Neumeyer, Rainer / Praz, Christophe

**DOI:** <https://doi.org/10.5169/seals-583852>

### **Nutzungsbedingungen**

Die ETH-Bibliothek ist die Anbieterin der digitalisierten Zeitschriften. Sie besitzt keine Urheberrechte an den Zeitschriften und ist nicht verantwortlich für deren Inhalte. Die Rechte liegen in der Regel bei den Herausgebern beziehungsweise den externen Rechteinhabern. [Siehe Rechtliche Hinweise.](#)

### **Conditions d'utilisation**

L'ETH Library est le fournisseur des revues numérisées. Elle ne détient aucun droit d'auteur sur les revues et n'est pas responsable de leur contenu. En règle générale, les droits sont détenus par les éditeurs ou les détenteurs de droits externes. [Voir Informations légales.](#)

### **Terms of use**

The ETH Library is the provider of the digitised journals. It does not own any copyrights to the journals and is not responsible for their content. The rights usually lie with the publishers or the external rights holders. [See Legal notice.](#)

**Download PDF:** 02.04.2025

**ETH-Bibliothek Zürich, E-Periodica, <https://www.e-periodica.ch>**

## DNA barcoding of the potter wasp genus *Eumenes* Latreille, 1802 (Hymenoptera: Vespidae: Eumeninae) in Switzerland

RAINER NEUMEYER<sup>1</sup> & CHRISTOPHE PRAZ<sup>2</sup>

<sup>1</sup> Probsteistrasse 89, CH-8051 Zürich, Switzerland; neumeyer.funk@bluewin.ch

<sup>2</sup> Laboratory of Evolutive Entomology, Institute of Biology, University of Neuchâtel, rue Emile-Argand 11, CH-2000 Neuchâtel, Switzerland

We sequenced the mitochondrial marker COX1 for all eight species (*E. coarctatus* (Linnaeus, 1758), *E. coronatus* (Panzer, 1799), *E. mediterraneus* Kriechbaumer, 1879, *E. papillarius* (Christ, 1791), *E. pedunculatus* (Panzer, 1799), *E. pomiformis* (Fabricius, 1781), *E. sareptanus* André, 1884 and *E. subpomiformis* Blüthgen, 1938) of *Eumenes* Latreille, 1802 occurring in Switzerland. We examined 37 individuals, 18 of them belonging to the very similar species *E. coarctatus* (11) and *E. pedunculatus* (7). In the morphologically variable *E. coarctatus*, we examined the status of two previously recognized morphological forms, corresponding to the former subspecies *coarctatus* (7) and *lunulatus* (4). The genetic analyses are congruent with current species delimitation and reveal a clear barcoding gap: the smallest interspecific distance was more than three times larger than the largest intraspecific distance. All species represented by more than one individual formed a monophyletic group. Within *coarctatus*, the two morphs did not form monophyletic groups in our genetic analyses. Rather, geographically close populations, which partially included both morphs, were genetically more similar than distantly located populations. In light of the genetic results, we evaluated diagnostic characters for the separation of all eight species. Moreover, we examined the available types for all these species. An important open question in the taxonomy of Swiss *Eumenes* is the status of the two closely related taxa *E. sareptanus* and *E. dubius* de Saussure, 1852.

Keywords: COX1, DNA barcoding, Heath potter wasp, Switzerland

### INTRODUCTION

Potter wasps (Hymenoptera: Vespidae: Eumeninae) of the genus *Eumenes* Latreille, 1802 are solitary wasps occurring in all zoogeographical regions except the Pacific (van der Vecht & Carpenter 1990: 22). In southern and central Europe they are rather common. Their Greek scientific name (*Eumenes*) means «benevolent» and hints at the fact that they are harmless even if they may look dangerous to some people. Using mud mixed with salivary secretions the females of European species build urn-shaped cells for their larvae, which are provided with paralyzed lepidopteran larvae (Blüthgen 1961: 202; Witt 2009: 236). Of the twelve species of the potter wasp genus *Eumenes* known in Europe (Gusenleitner 1999), eight are supposed to occur in Switzerland (Neumeyer 2014): *Eumenes coarctatus* (Linnaeus, 1758), *E. coronatus* (Panzer, 1799), *E. mediterraneus* Kriechbaumer, 1879, *E. papillarius* (Christ, 1791), *E. pedunculatus* (Panzer, 1799), *E. pomiformis* (Fabricius, 1781), *E. sareptanus* André, 1884, and *E. subpomiformis* Blüthgen, 1938. *Eumenes* species are mainly identified by diagnostic features such as pilosity and integument color (Gusenleitner 1999). Both of these morphological traits are variable within vespid wasps; in particular, temperature and humidity have been shown to have an important influence on phenotypes (MacLean *et al.* 1978).

Tab. 1. Identity numbers and locality information for individuals used in this study. Abbreviations of cantons are explained in Fig. 1.

name	sex	Specimen ID number RN GBIFCH	date [dd.mm.yyyy]	canton	municipality	site	coordinates			height [m]	leg.	coll.
							latitude deg min sec	longitude deg min sec	altitude deg min sec			
Delta unguiculatum	♂	RN0302 GBIFCH0055913	14.06.2012	AG	Möniken-Wildegg	Möniken	47 24 47.0	08 10 56.3		385	Rainer Neumeyer	Rainer Neumeyer
Delta unguiculatum	♂	RN0341 GBIFCH0054895	17.07.2013	TI	Losone	Gerre	46 10 52.7	08 44 33.7		230	Rainer Neumeyer	Rainer Neumeyer
Katamenes arbustorum	♂	RN0421 GBIFCH0057507	13.06.2013	VS	Savièse	Le Ferradze	46 14 29.4	07 19 36.5		760	Sonia Gerber	Sonia Gerber
Katamenes arbustorum	♂	RN0427 GBIFCH0057694	02.07.2013	VS	Betten	Zwischen-Achtu	46 22 45.1	08 04 37.8		1310	Sonia Gerber	Sonia Gerber
Eumenes coarctatus	♀	RN0262 GBIFCH0055898	14.06.2012	TG	Neunforn	Farhof: Gile	47 35 40.2	08 45 47.7		375	Holger Martz	ETHZ
Eumenes coarctatus	♀	RN0260 GBIFCH0055919	15.06.2012	SH	Neunkirch	Widen	47 41 53.8	08 30 45.8		450	Andreas Müller	ETHZ
Eumenes coarctatus	♀	RN0264 GBIFCH0055899	28.05.2012	TG	Neunforn	Farhof	47 35 40.3	08 45 35.8		375	Holger Martz	ETHZ
Eumenes coarctatus	♀	RN0237 GBIFCH0055923	14.06.2012	TG	Neunforn	Farhof: Gile	47 35 40.2	08 45 47.7		375	Holger Martz	ETHZ
Eumenes coarctatus	♀	RN0245 GBIFCH0055914	15.08.2012	AG	Möniken-Wildegg	Roosmatt	47 24 38.9	08 10 56.2		370	Rainer Neumeyer	Rainer Neumeyer
Eumenes coarctatus	♂	RN0273 GBIFCH0055776	08.08.2012	VS	Sierre	Finges: Compensation A9	46 17 13.2	07 33 10.0		530	Sonia Gerber	Sonia Gerber
Eumenes coarctatus	♀	RN0271 GBIFCH0055789	28.05.2012	VS	Leuk	Finges: Compensation A9	46 18 24.7	07 37 33.4		650	Sonia Gerber	Sonia Gerber
Eumenes coarctatus	♀	RN0315 GBIFCH0055904	22.08.2011	VS	Leuk	Brenfjong: bei Satellitenstation	46 19 06.7	07 38 36.6		919	Rainer Neumeyer	Rainer Neumeyer
Eumenes coarctatus	♂	RN0425 GBIFCH0057674	01.07.2013	VS	Hohlehn	Ladu	46 19 27.4	07 46 16.9		1175	Sonia Gerber	Sonia Gerber
Eumenes coarctatus	♂	RN0424 GBIFCH0057456	13.06.2013	VS	Savièse	Chervignine	46 14 53.7	07 19 36.5		575	Sonia Gerber	Sonia Gerber
Eumenes coronatus	♀	RN0269 GBIFCH0058189	09.07.2012	VS	Leuk	Susten: Pflanzwald	46 18 32.1	07 36 20.8		865	Rainer Neumeyer	Rainer Neumeyer
Eumenes coronatus	♀	RN0299 GBIFCH0055900	09.08.2012	TI	Malvaglia	Pflanz (612/128)	46 18 44.6	07 36 34.1		570	Sonia Gerber	Sonia Gerber
Eumenes coronatus	♀	RN0263 GBIFCH0055922	16.06.2012	TG	Neunforn	Bolla	46 23 02.6	08 58 39.0		355	Rainer Neumeyer	ETHZ
Eumenes coronatus	♂	RN0304 GBIFCH0055902	10.07.2012	AG	Müthlau	Farhof: Schärffäuli	47 35 34.4	08 45 59.6		372	Mike Herrmann	ETHZ
Eumenes mediterraneus	♀	RN0416 GBIFCH0063996	02.09.2004	VS	Sion	Unter Schoren	47 14 33.8	08 24 28.0		387	Rainer Neumeyer	ETHZ
Eumenes papillarius	♂	RN0259 GBIFCH0055920	09.07.2012	TG	Neunforn	Farhof	46 14 04.8	07 22 02.4		593	Paul Marchesi	MHNN
Eumenes papillarius	♂	RN0301 GBIFCH0055901	09.08.2012	TI	Malvaglia	Farhof	47 35 40.5	08 45 23.8		380	Holger Martz	ETHZ
Eumenes papillarius	♀	RN0316 GBIFCH0055906	04.07.2012	ZH	Bauma	Bolla	46 23 10.7	08 58 39.2		355	Rainer Neumeyer	ETHZ
Eumenes pedunculatus	♀	RN0442 GBIFCH0051811	12.08.2013	AG	Eiken	Fischbach: Joggelbüel	47 23 00.7	08 50 48.3		680	Rainer Neumeyer	Rainer Neumeyer
Eumenes pedunculatus	♀	RN0317 GBIFCH0055907	13.05.2011	ZH	Weisach	Wuerhüsli	47 32 24.1	07 59 29.4		311	Mare Halder	ETHZ
Eumenes pedunculatus	♀	RN0443 GBIFCH0053598	10.08.2013	GR	Rothenbrunnen	Mühle unt.	47 33 14.7	08 26 42.3		425	Rainer Neumeyer	Rainer Neumeyer
Eumenes pedunculatus	♀	RN0422 GBIFCH0055918	18.06.2013	GR	Samedan	Mühle	46 45 49.9	09 26 00.7		680	Mike Herrmann	ETHZ
Eumenes pedunculatus	♀	RN0281 GBIFCH0055921	24.07.2012	TG	Neunforn	Ariefa	46 31 50.1	09 51 42.3		1780	Hansueli Tinner	BNM
Eumenes pedunculatus	♀	RN0429 GBIFCH0055915	28.08.2012	AG	Bözen	Schachen	47 14 09.6	08 24 15.7		389	Rainer Neumeyer	ETHZ
Eumenes pomiformis	♀	RN0430 GBIFCH0055916	14.08.2009	BE	Schwarzhäuser	Farhof: Becke	47 35 56.4	08 45 48.1		445	Mike Herrmann	ETHZ
Eumenes pomiformis	♀	RN0342 GBIFCH0054894	16.07.2013	TI	Meride	Hessenberg	47 29 53.3	08 06 00.8		495	Georg Artmann	Georg Artmann
Eumenes pomiformis	♀	RN0312 GBIFCH0055908	21.09.2011	VS	Sion	Kiesgrube Wynau	47 15 19.8	07 46 49.7		416	Georg Artmann	Georg Artmann
Eumenes pomiformis	♀	RN0270 GBIFCH0058190	09.08.2012	VS	Leuk	zona est	45 53 24.0	08 57 25.1		565	Rainer Neumeyer	Rainer Neumeyer
Eumenes pomiformis	♀	RN0308 GBIFCH0055909	10.08.2013	VS	Gampel	Tous les Saints	46 14 07.8	07 21 52.9		570	Rainer Neumeyer	Rainer Neumeyer
Eumenes subpomiformis	♀	RN0428 GBIFCH0055917	31.05.2009	BS	Basel	Jeizibärg	46 18 32.1	07 35 57.4		565	Sonia Gerber	Sonia Gerber
Eumenes subpomiformis	♀	RN0305 GBIFCH0055910	10.08.2013	VS	Gampel	Badischer Bahnhof	46 19 17.9	07 44 06.7		1155	Rainer Neumeyer	Rainer Neumeyer
Eumenes subpomiformis	♂	RN0274 GBIFCH0058188	29.05.2012	VS	Vex	Jeizibärg	47 34 42.0	07 36 00.9		260	Georg Artmann	Georg Artmann
Eumenes subpomiformis	♀	RN0418 GBIFCH0055467	02.07.2010	VS	Gampel	Jeizinen: Underi Matte	46 19 31.2	07 43 20.0		1450	Rainer Neumeyer	Rainer Neumeyer
Eumenes subpomiformis	♀	RN0309 GBIFCH0055911	10.08.2013	VS	Gampel	L'Aiore	46 12 36.3	07 24 40.0		740	Sonia Gerber	Sonia Gerber
Eumenes subpomiformis	♀	RN0310 GBIFCH0055912	10.08.2013	VS	Gampel	Jeizinen	46 19 38.4	07 43 18.2		1525	Paul Marchesi	MHNN
Eumenes subpomiformis	♀	RN0310 GBIFCH0055912	10.08.2013	VS	Gampel	Jeizibärg	46 19 12.0	07 43 49.4		1045	Rainer Neumeyer	Rainer Neumeyer



Particularly problematic is the highly variable species *Eumenes coarctatus*. In Switzerland and elsewhere, two taxa (*coarctatus*, *lunulatus*) were long considered to be two distinct species, until Gusenleitner (1998: 160) declared them as subspecies. Recently, Castro & Sanza (2009) suggested that even the subspecies rank was not appropriate for these two taxa and thus the taxon *E. lunulatus* Fabricius, 1804 is currently regarded as a synonym (Castro & Sanza 2009: 265) of *coarctatus*. We further examine this problem with the help of DNA barcodes. In particular, we explore how many species are hidden under the name *coarctatus* and how many species of *Eumenes* actually occur in Switzerland. We also use specimens identified using molecular barcodes to re-examine the morphology of all *Eumenes* species present in Switzerland.

#### MATERIAL AND METHODS

Thirty-seven ingroup specimens of the genus *Eumenes* were included in the molecular analysis, representing eight presumed species (Tab. 1). The focus was on the eleven specimens of the Heath potter wasp (*Eumenes coarctatus*), seven of them belonging to the morph «*coarctatus*» (identical to the former subspecies *Eumenes coarctatus coarctatus*), four to the morph «*lunulatus*» (identical to the former subspecies *Eumenes coarctatus lunulatus*). In addition, two specimens each of *Delta unguiculatum* (Villers, 1789) and *Katamenes arbustorum* (Panzer, 1799) were used as outgroup taxa to root the tree. Most specimens were collected in 80 % ethanol in the field, but we also included some specimens that were killed with ethyl acetate. DNA was extracted from one single leg to preserve a nearly intact specimen. All specimens were collected in Switzerland. All DNA extractions are deposited in the DNA bank of the Swiss Barcode of Life initiative (Swissbol; [www.swissbol.ch](http://www.swissbol.ch)), and all sequences are deposited on BOLD ([www.boldsystems.org](http://www.boldsystems.org)).

Full lab protocols can be found in Praz *et al.* (2008) and Neumeyer *et al.* (2014). DNA was isolated using the Nucleospin Tissue 96 kit; PCR reactions were performed with GoTaq Polymerase (Promega) in a Biometra T1 thermocycler. PCR products were purified enzymatically using a mix of the enzymes Exonuclease I (Fermentas) and FastAP Thermosensitive Alkaline Phosphatase (Fermentas) and sequenced in both directions with the primers used in the original amplification using BigDye terminator technology (Applied Biosystems). Big Dye products were purified with Sephadex (GE Healthcare Life Sciences) and analyzed on a ABI-3130 DNA sequencer at the Genetic Diversity Center, ETH Zürich

As a marker we sequenced the 658 bp fragment of the mitochondrial gene cytochrome oxidase I (COX1), used as a universal barcode (Hebert *et al.* 2003). As primers we used LepF and LepR (Hebert *et al.* 2004) with the following conditions: an initial denaturation of 1 min at 94 °C, then six cycles of 1 min at 94 °C, 1.5 min at 45 °C, and 1.25 min at 72 °C, followed by 36 cycles of 1 min at 94 °C, 1.5 min at 51 °C, and 1.25 min at 72 °C, with a final step of 5 min at 72 °C. Chromatograms were edited in Geneious R6 (Kearse *et al.* 2012); the nucleotide matrix was converted into amino acid to ensure that no stop codon was found. We used maximum likelihood analyses in RAxML 7.2.8 (Stamatakis *et al.* 2005) to reconstruct phylogenetic trees, separating the dataset in three partitions corresponding to the three codon positions and applying a GTR + G model to each partition. Bootstrap support values were calculated based on 1000 bootstrap replicates. Trees were rooted



Tab. 2. Abbreviations of depositories (museums and private collections) and other institutions mentioned.

abbreviation	full name
museums and other institutions	
AM	American Museum of Natural History, New York, USA
BNM	Bündner Naturmuseum, Chur
ETHZ	Eidgenössische Technische Hochschule, Zürich
ILNB	Institut für Landschaftsökologie und Naturschutz in Bühl, Germany
LSL	Linnean Society of London, GB
MCHNS	Musée cantonal d'histoire naturelle, Sion
MFNB	Museum für Naturkunde, Berlin, Germany
MHNN	Muséum d'histoire naturelle de Neuchâtel
MNHN	Muséum national d'histoire naturelle, Paris, France
MZL	Musée cantonal de zoologie, Lausanne
NHML	Natural History Museum, London, GB
NMBE	Naturhistorisches Museum der Burgergemeinde Bern
ZMUC	Zoologisk Museum, Københavns Universitet, Denmark
ZSM	Zoologische Staatssammlung München, Germany
private collections	
GA	Georg Artmann-Graf, Olten (SO)
RN	Rainer Neumeyer, Zürich
SG	Sonja Gerber, Sion

with the sequences of *Delta unguiculatum*. Genetic distances were calculated in Paup 4.0 (Swofford 2002), applying a GTR model of sequence evolution.

For taxonomy and classification we followed Gusenleitner (1999) with updates by Castro & Sanza (2009). Abbreviations used for specimen depositories and other institutions or private collections cited in this study are given in Tab. 2. We also studied the available type material and read the original descriptions (André 1884, Blüthgen 1938, Christ 1791, Fabricius 1781, 1804; Kriechbaumer 1879, Linnaeus 1758, Müller 1923, Panzer 1799) of the species and (former) subspecies of *Eumenes* occurring in Switzerland. Stack-photographs of mounted specimens were taken with a Keyence VHX-2000 digital microscope at the NMBE.

## RESULTS

### *Barcoding*

We obtained high quality sequences of the mitochondrial gene COX1 for 37 individuals of *Eumenes*, two individuals of *Katamenes arbustorum* and two of *Delta unguiculatum* (Fig. 1). All sequences are 658 bp long, except one (RN269, 636 bp). Interspecific genetic distances within the genus *Eumenes* were comprised between 6.26 (between *E. subpomiformis* and *E. papillarius*) and 13.06 (*E. sareptanus* and *E. mediterraneus*). Intraspecific distances were comprised between 0 and 1.86: they were equal to 0.0 within *E. pedunculatus*, *E. pomiformis*, *E. papillarius*; 0.61 within *E. subpomiformis*; 0.63 within *E. coronatus*; and up to 1.86 within *E. coarctatus* sensu lato. Thus, a clear barcoding gap was observed in our dataset, as the minimal interspecific distance (6.26) was substantially larger than the maximal intraspecific distance (1.86).

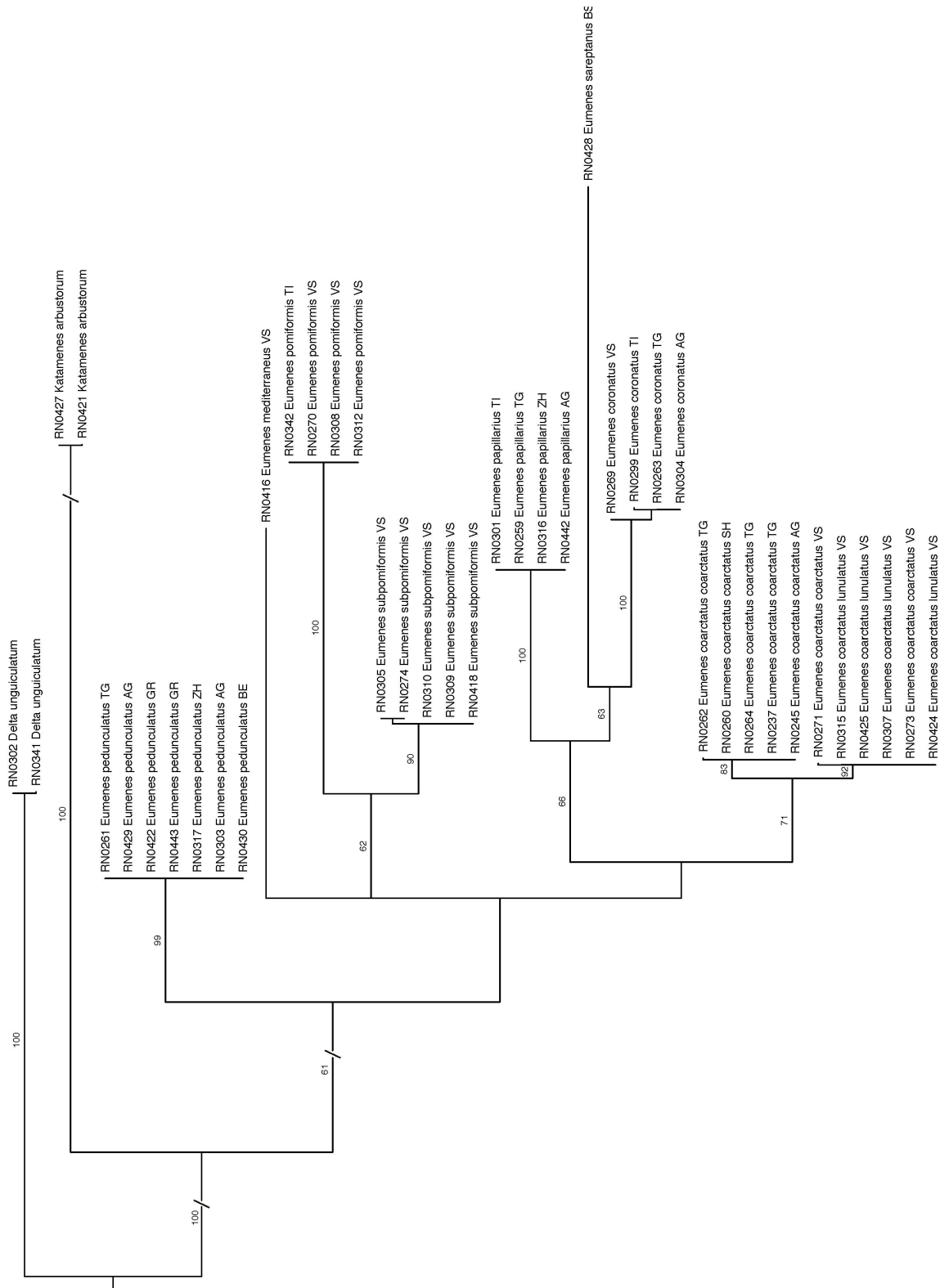


Fig. 1. Phylogenetic tree based on maximum likelihood analyses of sequences of the mitochondrial marker cytochrome oxidase 1 (COX1). Numbers shown at nodes are bootstrap values based on 1000 bootstrap replicates performed in RAxML v.7.0.4 (only values  $\geq 50$  are shown). Branches interrupted by an oblique line have been shortened for better graphic representation. The abbreviations after the species names indicate the canton where an individual was found: AG = Argovia, BE = Berne, BS = Basel-City, GR = Grisons, SH = Schaffhausen, TG = Turgovia, TI = Ticino, VS = Valais, ZH = Zurich.

The phylogenetic analysis of COX1 (Fig. 1) reveals two clades within the taxon *Eumenes coarctatus*, but their genetic distance (up to 1.86) appears small compared to other interspecific distances; consequently, we consider it unlikely that two species should be recognized within the taxon *coarctatus* s. l.. Moreover, these two clades of *coarctatus* do not group the specimens according to the morphs «*coarctatus*» and «*lunulatus*» but rather according to the geographic origin of the specimens (Fig. 1). Indeed, the six individuals from the canton of Valais (VS) in southwestern Switzerland form one clade although two individuals (RN273, RN271) belong to the morph «*coarctatus*» and four individuals (RN315, RN425, RN424, RN307) to the morph «*lunulatus*». The other clade includes five individuals (RN262, RN260, RN264, RN237, RN245) from northern Switzerland, all of them representing the morph «*coarctatus*». Thus, our analysis gives no reason to consider the two morphs («*coarctatus*», «*lunulatus*») of *E. coarctatus* as subspecies, but rather confirms the opinion of Castro & Sanza (2009) mentioned in the introduction.

Regarding the other species, our analysis (Fig. 1) is congruent with traditional taxonomy and confirms the recognition of eight species (*coarctatus*, *coronatus*, *mediterraneus*, *papillarius*, *pedunculatus*, *pomiformis*, *sareptanus*, *subpomiformis*) of *Eumenes* occurring in Switzerland (Neumeyer 2014). Only two individuals (RN418, RN443) originally appeared in the wrong clade but a re-examination showed that they were misidentified. RN418 (*E. subpomiformis*) is a male and was confused with *E. pedunculatus* due to the unusually bright and sparsely punctate tergite 2. The hairs on the clypeus are however short, as typical for *E. subpomiformis* (Gusenleitner 1999: 566). RN443 (*E. pedunculatus*) on the other hand is a female and was misidentified as *E. coarctatus*, which is sometimes quite similar in the female sex, but a reexamination using the good diagnostic traits of Gusenleitner (1972: 81) confirmed that it was *E. pedunculatus*.

#### *Type study*

We examined the available type specimens of all Swiss species (Neumeyer 2014) to verify their identities. In particular, all type specimens were examined, except for those destroyed or lost.

#### ***Eumenes coarctatus* (Linnaeus, 1758)**

*Vespa coarctata* Linnaeus, 1758: 573; ♀ (LINN 2796: <http://linnean-online.org/16751/>, LINN 2797: <http://linnean-online.org/16752/>), holotype; Europa; LSL coll.

*Eumenes lunulata* Fabricius, 1804: 290; ♀, holotype (lectotype designation in Gusenleitner 1970 unnecessary, given that no other types are known according to van der Vecht & Fischer 1972: 129); Österreich [Austria]; ZMUC coll. (Sammlung Kiel).

The Linnean type is broken into two pieces (LINN 2796, LINN 2797) and is not available for loan, but we examined it at NHML. The clypeus is entirely black (<http://linnean-online.org/16752/>) and the second tergite is very bright with only a few, widely spaced points (<http://linnean-online.org/16751/>). Such a morph in *E. coarctatus* is unknown from Switzerland, where all specimens have a large yellow spot at the base of the clypeus (Fig. 2) and more closely spaced punctuation on the second tergite, which is also less bright (Fig. 3). On the other hand, the Linnean type has no erect hairs on the second sternite (<http://linnean-online.org/16751/>), excluding any confusion with *E. coronatus*. Moreover, the interantennal yellow spot





Fig. 2. Frontal view of the head of a female of *Eumenes coarctatus* (individual RN0262) (morph «*coarctatus*») from Neunforn (canton of Turgovia) in northern Switzerland.



Fig. 3. Dorsal view of the tergite 2 of a female of *Eumenes coarctatus* (individual RN0262) (morph «*coarctatus*») from Neunforn (canton of Turgovia) in northern Switzerland.





Fig. 4. Dorsal view of the gaster of the female holotype of *Eumenes lunulata* Fabricius, 1804 from Austria (ZMUC coll.).



Fig. 5. Dorsal view of the tergite 2 of a female of *Eumenes coarctatus* (individual RN0306) (morph «*lunulatus*») from Leuk in the canton of Valais.

does not reach the clypeus (<http://linnean-online.org/16752/>), making confusion with *E. pedunculatus* unlikely. Hence, the Linnean type certainly represents what is currently understood as *E. coarctatus* but probably represents a northern European morph.

The type of *Eumenes lunulata* Fabricius is a badly preserved specimen with the head missing. However, the second tergite is densely punctate (Fig. 4), matching our morph «*lunulatus*». (Fig. 5).

### ***Eumenes coronatus* (Panzer, 1799)**

*Vespa coronata* Panzer, 1799: 64, 12; ♂, type destroyed (van der Vecht & Fischer 1972: 126); «Habitat Norimbergae in floribus. Dn. [Dominus] Sturm.» [Lives in flowers of Nuremberg. Mr Sturm].

*Eumenes atricornis* Fabricius, 1804: 289; holotype; Österreich [Austria]; ZMUC coll. (Sammlung Kiel).

The locality (Nuremberg = Nürnberg) of the Panzer type is the well known city in Middle Franconia of Bavaria (Germany).

Since the extremity of the gaster and head are missing, it is hard to conclude whether the Fabricius type is a female as stated by Blüthgen (1961: 205) or a male, as written on the label. In any case it has erect hairs on the second sternite, which is diagnostic for *E. coronatus* (Gusenleitner 1999: 566).

### ***Eumenes dubius* de Saussure, 1852**

*Eumenes dubia* de Saussure, 1852; 3 ♀♀, 1 ♂, cotypes; «Le midi de la France» [«The south of France»]; MNHN coll.

This species is not thought to occur in Switzerland (Neumeyer 2014). However, in contrast to Gusenleitner (1972, 1999, 2008), Castro (1992: 30 ff.) considers *Eumenes sareptanus* André, 1884 as a synonym of *E. dubius*. The examined cotypes of *E. dubius* are very bright (e.g. with clypeus entirely yellow); their pilosity is overall very short on the entire body and the ventral side of the flagellum is yellow, also in the female sex. Additionally, the terminal lamella of the second tergite is transparent as in *E. mediterraneus*. In contrast, all Swiss specimens of *E. sareptanus* are less bright (e.g. with clypeus partially black) and with longer pubescence on both vertex and mesoscutum. Moreover, the flagellum is almost entirely black, even in the males, and the second tergite always has an opaque terminal lamella. Based on these morphological differences, we consider the taxa *E. dubius* and *E. sareptanus* as distinct species for now, the former being absent from Switzerland.

### ***Eumenes mediterraneus* Kriechbaumer, 1879**

*Eumenis* [sic!] *mediterranea* Kriechbaumer, 1879; ♂, lectotype (designated in Blüthgen 1943: 301); Dalmatien [Dalmatia]; ZSM coll.

The lectotype of this distinctive species, unlikely to be confused with any other Swiss *Eumenes*, is in good condition.

### ***Eumenes papillarius* (Christ, 1791)**

*Sphex papillaria* Christ, 1791; ♂, type destroyed (Blüthgen 1961: 206); no type locality mentioned, but Blüthgen (1961: 206) mentions «Kronberg (Taunus) [Germany]».



Christ (1791: 325–326 + Tab. 32) describes several traits but none of them can be considered as diagnostic. Neither the characteristic long hairs on the second tergite nor the striking dark longitudinal keel on the last male flagellomere are mentioned. Even the figure shown (Christ 1791: Pl. 32, Fig. 10) does not permit the identification of any European species of *Eumenes*. Therefore we encourage the designation of a neotype for *E. papillarius* by using a sequenced specimen from the Taunus mountains (State of Hesse, Germany).

### ***Eumenes pedunculatus* (Panzer, 1799)**

*Vespa pedunculata* Panzer, 1799: 63, 8; ♀, type destroyed (van der Vecht 1968: 68); «Habitat et apud nos in hortis, minus frequens. Dn. [Dominus] Iurine.» [Lives also in our area in gardens, infrequent. Mr Jurine].

♀, neotype, designated in van der Vecht (1968: 72); Ferreyres, [canton of] Vaud, Switzerland; 22 Aug 1962, de Beaumont leg.; MZL coll.

No type locality is explicitly mentioned in Panzer (1799: 63, 8) for *Vespa pedunculata*, but «Dn. Iurine» probably refers to the Genevan naturalist Louis Jurine (1751–1819) and not to a Swiss locality as presumed by Gusenleitner (1972: 81). So, given that «apud nos» means «in our area» and therefore the Genevan basin, the locality of Ferreyres (60 km NE of Geneva) is certainly an appropriate locality for the neotype selected by van der Vecht (1968).

The neotype has an interantennal yellow spot reaching the clypeus, which has a large yellow spot at the base. Moreover, the points on the second tergite are distinctly smaller and more wide-spaced than in Swiss female specimens of *E. coarctatus*, but not more so than on the second tergite of the Linnean type of *E. coarctatus*. However, while the second tergite is very bright in the Linnean type of *coarctatus*, it has a milky shininess in the neotype of *pedunculatus*, a character common in *pedunculatus* but unusual in *coarctatus*. All in all, we can exclude any confusion with the otherwise very similar *E. coarctatus*.

### ***Eumenes pomiformis* (Fabricius, 1781)**

*Vespa pomiformis* Fabricius, 1781: 467–468; ♀, lectotype (designated in Blüthgen 1938); Italia [Italy]; ZMUC coll. (Sammlung Kiel).

Like the other mentioned types of Fabricius this lectotype is in bad condition, probably due to damage by *Anthrenus* beetles. However, the characteristic short hairs on the propleurum are still clearly visible.

### ***Eumenes sareptanus* André, 1884:**

♀, lectotype, designated in Gusenleitner (2001: 214); Sarepta [Volgograd Oblast, Russia]; MHNN coll.

*Eumenes pomiformis* forma *insolata* Müller, 1923; ♀, ♂, types missing, not in the MFNB; Mark Brandenburg [Mark of Brandenburg], Germany.

*Eumenes dubius sareptanus* var. *germanica* Blüthgen, 1938: 469; ♀, holotype; Wasenweiler (Kaiserstuhl) in Germany. MFNB coll.

The lectotype in the MHNN is to some extent covered by a silky webbing, possibly mycelium, but its surface is still visible. In any case, it matches the original description (André 1884: 638) fairly well. However, there are three distinct deviations. First, the hairs on head and mesosoma are white instead of bright orange [roux]. Second, the flagella are not just «black» [noires], but partially black to

orange ventrally, especially on the first pairs of flagellomeres. Third, the punctuation of the second tergite is not «very fine» [très finement], but rather strong, as described for *Eumenes pomiformis* forma *insolata* by Müller (1923: 624). This morph [forma], considered as a subspecies (*E. sareptanus insolatus* Müller, 1923) since Gusenleitner (1972), differs from the nominate form (*sareptanus* André, 1884) by the golden yellow instead of sulfur-yellow, almost whitish integumental maculations (Gusenleitner 1972: 109) and by the female legs, which are not only red, but also partially yellow (Gusenleitner 1972: 109) and even black (Müller 1923: 627).

### *Eumenes subpomiformis* Blüthgen, 1938

♀, holotype; Austria, «O. Tirol» [East Tyrol], Huben, 850–1000 m; 27. Jul 1930, S.G. Bischoff leg; MFNB coll.

The holotype is in good condition and is identical to typical females of this species from Switzerland. However, the type locality, interpreted as «Huben» (Blüthgen 1938), «Huben (Tirol)» (Gusenleitner 1972: 101) or «Huben in Tirol» (Gusenleitner 1999: 574), remains ambiguous as several localities with this name are found in Tyrol. The indications on the holotype's label «O. Tirol: Huben 850–1000 m» (Fig. 6) allow this question to be answered. The well known Tyrolian resort Huben in the Tyrolian valley of Ötztal is apparently too high ( $\geq 1200$  m) to be the type locality. Moreover, this locality is not in East Tyrol (Osttirol), but in Western Tyrol. However, in East Tyrol where the river Schwarzach enters the river Isel there is another locality called Huben situated at 819 m, which corresponds fairly well to the altitude (850–1000 m) indicated on the label (Fig. 6). This should be considered the type locality. «O. Tirol» is more likely to be an abbreviation of Osttirol than of «Oesterreich [= Österreich] Tirol». Note that East Tyrol is a district of the Austrian federal state of Tyrol, but is geographically separated from the rest of the state.

### DISCUSSION

In accordance with Castro & Sanza (2009: 265) our data fail to show any genetic differences (Fig. 1) among the two morphs (Fig. 3, 5) of *E. coarctatus* in Switzer-



Fig. 6. Labels of the holotype of *Eumenes subpomiformis* Blüthgen, 1938 (MFNB coll.).



land. However, we can still question the morphological differences between the females from Switzerland and the Linnean holotype (LINN 2796, LINN 2797) from «Europa» (Linnaeus 1758: 573). Gusenleitner (1999: 569) regarded females of *coarctatus* with an entirely black clypeus and widely spaced points on the second tergite as typical but stressed that specimens of *coarctatus* become brighter with denser punctuation on the second tergite in populations found in more xerothermic habitats (Gusenleitner 1999: 570). Some individuals (*E. coarctatus*) from Scandinavia should also be sequenced to solve this problem. Lastly, sequencing of a nuclear marker may also be useful to know whether both clades in our COX1-tree represent two reproductively isolated populations or not.

Genetic distances correlating with geographic separation as appears to be the case within both *E. coarctatus* and *E. coronatus* (Fig. 1), are not really surprising (Podnar *et al.* 2014). Switzerland represents the meeting point of the several post-glacial recolonization routes identified in Europe (Hewitt 1999). The genetic differences seen in these two taxa may reflect distinct recolonisation patterns, e.g., from southwestern Europe through the Rhone Valley in the Valais populations and from Eastern Europe refugia in populations from Northern Switzerland. Yet, the Valais is connected to the rest of Switzerland at the shores of Lake Geneva in a region of low elevation (372 m a.s.l.). Thus, individuals from the region of Geneva and Lausanne would be interesting to sequence.

The Swiss specimens of *sareptanus* – considered to belong to the subspecies *E. sareptanus insolatus* Müller, 1923, like all European populations outside Russia (Gusenleitner 1999) – are not intermediate between *E. dubius* and *E. sareptanus sareptanus* from Southern Russia. Instead, Swiss specimens have particularly long pubescence (longer than typical *sareptanus* or *dubius*) and relatively dark flagella (darker than typical *dubius* or *sareptanus*). Furthermore, the femora of Swiss individuals are not only orange or yellow, but also partially black. Hence, there is no gradual cline of traits from Northern Africa (*dubius*) to Russia (*sareptanus*) here.

We thus reject the concept of one Afro-Russo-European species (*E. dubius* sensu Castro 1992) for now and regard *E. dubius* and *E. sareptanus* as different species, as already mentioned. We call the concept of two discrete subspecies (*sareptanus*, *insolatus*) of *E. sareptanus* into question, however, since Müller (1923: 626 ff.) also describes reared individuals from central Europe (thus belonging to the forma *insolata*) which showed exactly the same color traits as the nominate form (Gusenleitner 1972: 109).

#### ZUSAMMENFASSUNG

Von allen acht einheimischen Arten (*E. coarctatus*, (Linnaeus, 1758), *E. coronatus* (Panzer, 1799), *E. mediterraneus* Kriechbaumer, 1879, *E. papillarius* (Christ, 1791), *E. pedunculatus* (Panzer, 1799), *E. pomiformis* (Fabricius, 1781), *E. sareptanus* André, 1884 und *E. subpomiformis* Blüthgen, 1938) der Pillenwespen (*Eumenes* Latreille, 1802) sequenzierten wir den mitochondrialen Marker COX1. Insgesamt wurden 37 Ingroup-Individuen untersucht, 18 davon allein bei den einander besonders ähnlichen Arten *E. coarctatus* (11 Individuen) und *E. pedunculatus* (7). Bei *E. coarctatus* wurden dabei zwei Morphen unterschieden, die den früheren Unterarten *coarctatus* (7) und *lunulatus* (4) entsprechen. Die genetische Analyse erbrachte bei allen Arten wohldifferenzierte Kladen. Innerhalb von *E. coarctatus* gruppieren sich nicht die Individuen derselben Morphe, sondern geografische Nachbarn, unter denen sich zum Teil beide Morphen befanden. Ferner inspizierten wir von allen erwähnten Taxa die verfügbaren Typen und stiessen dabei auf Forschungsbedarf, was den Unterschied der Taxa *Eumenes sareptanus* und *E. dubius* de Saussure, 1852 betrifft.



## ACKNOWLEDGEMENTS

This project was funded by SwissBOL (<http://www.swissbol.ch>). Pictures presented in this article were taken using the Keyence VHX-2000 digital microscope of the Naturhistorisches Museum der Burggemeinde Bern, with the assistance of Hannes Baur. Mike Fitton (LSL) kindly brought the Linnean type of *Eumenes coarctatus* to the NHML, where it could be examined by courtesy of Gavin Broad. Jessica Litman (MHNN) greatly improved the English, and Jim Carpenter (AM) and one anonymous reviewer made useful comments on the manuscript. We also express our gratitude to the people who collected or lent material: Georg Artmann (Olten, SO), Rod Eastwood (ETHZ), Anne Freitag (MZL), Sonja Gerber (MCHNS), Mare Haider (ILNB), Mike Herrmann (Konstanz, D), Jessica Litman (MHNN), Holger Martz (Konstanz, D), Paul Marchesi (†), Andreas Müller (Wädenswil, ZH), Agnièle Touret-Alby (MNHN), Viola Richter (MFNB), and Sabrina Schnurrenberger (BNM).

## REFERENCES

- André, E. 1884 [1881–1886]. *Species des Hyménoptères d'Europe et d'Algérie*. Tome [volume] 2 — Chez l'auteur [author's edition], Beaune, 919 + 48 pp.
- Blüthgen, P. 1938. Beiträge zur Kenntnis der paläarktischen Eumeniden. — *Deutsche Entomologische Zeitschrift* 1938 (2): 434–496.
- Blüthgen, P. 1943. Neue paläarktische *Eumenes*-Arten oder -Rassen. — *Mitteilungen der Münchner Entomologischen Gesellschaft* 33: 297–306.
- Blüthgen, P. 1961. Die Faltenwespen Mitteleuropas. — *Abhandlungen der Deutschen Akademie der Wissenschaften zu Berlin, Klasse für Chemie, Geologie und Biologie* 1961 (2): 251 pp.
- Castro, L. 1992. Sobre los Euménidos de la valle medio del Ebro. — *Zapateri, Revista aragonesa de entomología* 1 (2): 21–34.
- Castro, L. & Sanza, F. 2009. Aportación al conocimiento de los Vespidae de Sierra Nevada (España), con algunos comentarios taxonómicos. — *Boletín Sociedad Entomológica Aragonesa* 45: 259–278.
- Christ, J.L. 1791. *Naturgeschichte, Klassifikation und Nomenclatur der Insekten vom Bienen, Wespen und Ameisengeschlecht; als der fünften Klasse fünfte Ordnung des Linneischen Natursystems von den Insekten: Hymenoptera; mit häutigen Flügeln*. — In der Hermannischen Buchhandlung, Frankfurt a.M. pp. 325–326 + Tab. 32: 10.
- Fabricius, J.C. 1781. *Species insectorum: exhibentes eorum differentias specificas, synonyma auctorum, loca natalia, metamorphosin [!], adjectis observationibus, descriptionibus*. Tom. I. [vol. 1] — Carol. Ernest. Bohnii [Karl Ernst Bohn], Hamburgi et Kilonii [Hamburg and Kiel]. 552 pp.
- Fabricius, J.C. 1804. *Systema Piezatorum; secundum ordines, genera, species adiectis synonymis, locis, observationibus, descriptionibus*. — Carolus [Karl] Reichard, Brunsvigae [Brunswick]. 439 pp.
- Gusenleitner, J. 1970. Bemerkenswertes über Faltenwespen I. — *Mitteilungen der Münchner Entomologischen Gesellschaft* 59: 163–167.
- Gusenleitner, J. 1972. Übersicht über die derzeit bekannten westpaläarktischen Arten der Gattung *Eumenes* Latr. 1802. — *Bollettino del Museo Civico di Storia Naturale di Venezia* 22–23: 67–117.
- Gusenleitner, J. 1998. Vespoidea und Sapygidae gesammelt auf der Insel Samos. — *Linzer biologische Beiträge* 30: 155–161.
- Gusenleitner, J. 1999. Bestimmungstabellen mittel- und südeuropäischer Eumeniden. Teil 11. Die Gattungen *Discoelius* Latreille 1809, *Eumenes* Latreille 1802, *Katamenes* Meade-Waldo 1910, *Delta* Saussure 1855, *Ischnogasteroides* Magretti 1884. — *Linzer biologische Beiträge* 31 (2): 561–584.
- Gusenleitner, J. 2001. Über eine Sammlung von Eumeniden-Arten im Museum d'Histoire naturelle Neuchâtel, welche Ed. André 1883 und 1884 beschrieben hat. — *Linzer biologische Beiträge* 33 (1): 211–215.
- Gusenleitner, J. 2008. Vespidae. In: Schuster, R. (ed.), *Checklisten der Fauna Österreichs No. 3*. — *Biosystematics and Ecology Series* 24: 31–40.
- Hebert, P.D.N., Cywinska, A., Ball, S.L. & deWaard, J.R. 2003. Biological identifications through DNA barcodes. — *Proceedings of the Royal Society of London B: Biological Sciences* 270: 313–321. doi: 10.1098/rspb.2002.2218
- Hewitt, G.M. 1999. Post-glacial re-colonization of European biota. — *Biological Journal of the Linnean Society* 68: 87–112.

- Kearse, M., Moir, R., Wilson, A., Stones-Havas, S., Cheung, M., Sturrock, S., Buxton, S., Cooper, A., Markowitz, S., Duran, C., Thierer, T., Ashton, B., Mentjies, P. & Drummond, A. (2012). Geneious Basic: an integrated and extendable desktop software platform for the organization and analysis of sequence data. — *Bioinformatics*, 28: 1647–1649.
- Kriechbaumer, J. 1879. Eumeniden-Studien; 4. Eine neue Art. — *Entomologische Nachrichten* 5 (7): 85–89.
- Linnaeus, C. 1758. *Systema naturae*, tomus [volume] 1 (Editio decima, reformata). — Laurentius Salvius, Holmiae [Stockholm]. 824 pp.
- MacLean, B.K., Chandler, L. & MacLean, D.B. 1978. Phenotypic expression in the paper wasp *Polistes fuscatus*. — *The Great Lakes Entomologist* 11 (2): 105–116.
- Müller, M. 1923. Unsere märkische Pillenwespe (*Eumenes* F.). — *Deutsche Entomologische Zeitschrift* 1923 (6): 624–633.
- Neumeier, R. 2014. Kommentierte Liste der in der Schweiz vorkommenden Faltenwespen (Hymenoptera: Vespidae). — *Mitteilungen der Schweizerischen Entomologischen Gesellschaft* 87 (3–4): 359–369.
- Neumeier, R., Baur, H., Guex, G.D. & Praz, C. 2014. A new species of the paper wasp genus *Polistes* (Hymenoptera, Vespidae, Polistinae) in Europe revealed by morphometrics and molecular analyses. — *ZooKeys* 400: 67–118.
- Panzer, G.W.F. 1799. *Faunae Insectorum Germanicae initia*, Hefte [booklets] 63–64. — Felsecker, Nürnberg [Nuremberg].
- Podnar, M., Bruvo Mađarić, B. & Mayer, W. 2014. Non-concordant phylogeographical patterns of three widely codistributed endemic Western Balkans lacertid lizards shaped by specific habitat requirements and different responses to Pleistocene climatic oscillations. — *Journal of Zoological Systematics and Evolutionary Research* 52 (2): 119–129.
- Praz, C.J., Müller, A., Danforth, B.N., Griswold, T.L., Widmer, A. & Dorn, S. 2008. Phylogeny and biogeography of bees of the tribe Osmiini (Hymenoptera: Megachilidae). — *Molecular Phylogenetics and Evolution* 49: 185–197. doi: 10.1016/j.ympev.2008.07.005
- de Saussure, H. 1852. Monographie des guêpes solitaires, ou de la tribu des Euméniens, comprenant la classification et la description de toutes les espèces connues jusqu'à ce jour, et servant de complément au Manuel de Lepeletier de Saint Fargeau. — J. Cherbuliez, Genève et V. Masson, Paris. pp. 1–128; pls ii–v, vii, x, xiv.
- Stamatakis, A., Ludwig, T. & Meier, H. 2005. RAxML-III: a fast program for maximum likelihood-based inference of large phylogenetic trees. — *Bioinformatics* 21: 456–463.
- Swofford, D.L. 2002. Paup. 4.0b10 for Macintosh. — Sinauer Associates Inc, Sunderland, Massachusetts.
- van der Vecht, J. 1968. Notes on some European *Eumenes*-species. — *Entomologische Berichten* 28: 68–80.
- van der Vecht, J. & Carpenter, J.M. 1990. A catalogue to the genera of the Vespidae. — *Zoologische Verhandelingen* 260: 3–62.
- van der Vecht, J. & Fischer, F.C.J. 1972. *Hymenopterorum Catalogus*, Pars 8: Palaearctic Eumenidae. — W. Junk N.V., 's-Gravenhage, 199 pp.
- Witt, R. 2009. *Wespen*. — *Vademecum-Verlag* (Oldenburg, Germany). 400 pp.
- Zhang, D.X. & Hewitt, G.M. 1996. Assessment of the universality and utility of a set of conserved mitochondrial COI primers in insects. — *Insect Molecular Biology* 6: 143–150. doi: 10.1111/j.1365-2583.1997.tb00082.x

(received July 6, 2015; accepted October 8, 2015; published December 31, 2015)