

Zeitschrift: Memorie / Società ticinese di scienze naturali, Museo cantonale di storia naturale
Herausgeber: Società ticinese di scienze naturali ; Museo cantonale di storia naturale
Band: 7 (2004)

Artikel: Atlante di identificazione delle Felci (Filicopsida) presenti in Svizzera e in Italia : su base palinologica e epidemiologica
Autor: Peroni, Adalberto / Peroni, Gabriele
Kapitel: Illustrazioni di riferimento per la diagnosi
DOI: <https://doi.org/10.5169/seals-981676>

Nutzungsbedingungen

Die ETH-Bibliothek ist die Anbieterin der digitalisierten Zeitschriften. Sie besitzt keine Urheberrechte an den Zeitschriften und ist nicht verantwortlich für deren Inhalte. Die Rechte liegen in der Regel bei den Herausgebern beziehungsweise den externen Rechteinhabern. [Siehe Rechtliche Hinweise.](#)

Conditions d'utilisation

L'ETH Library est le fournisseur des revues numérisées. Elle ne détient aucun droit d'auteur sur les revues et n'est pas responsable de leur contenu. En règle générale, les droits sont détenus par les éditeurs ou les détenteurs de droits externes. [Voir Informations légales.](#)

Terms of use

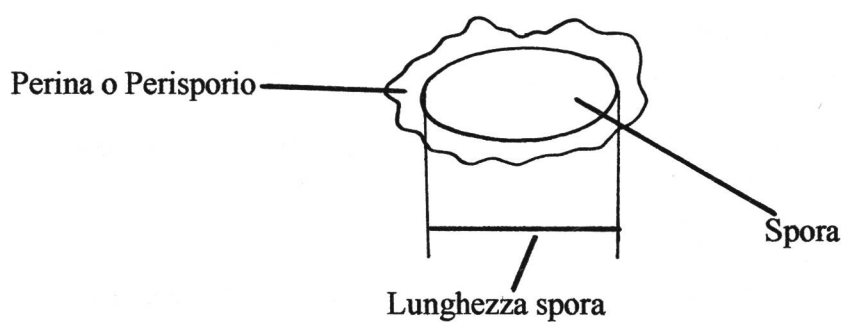
The ETH Library is the provider of the digitised journals. It does not own any copyrights to the journals and is not responsible for their content. The rights usually lie with the publishers or the external rights holders. [See Legal notice.](#)

Download PDF: 01.04.2025

ETH-Bibliothek Zürich, E-Periodica, <https://www.e-periodica.ch>

Illustrazioni di riferimento per la diagnosi

Spore



Stomi

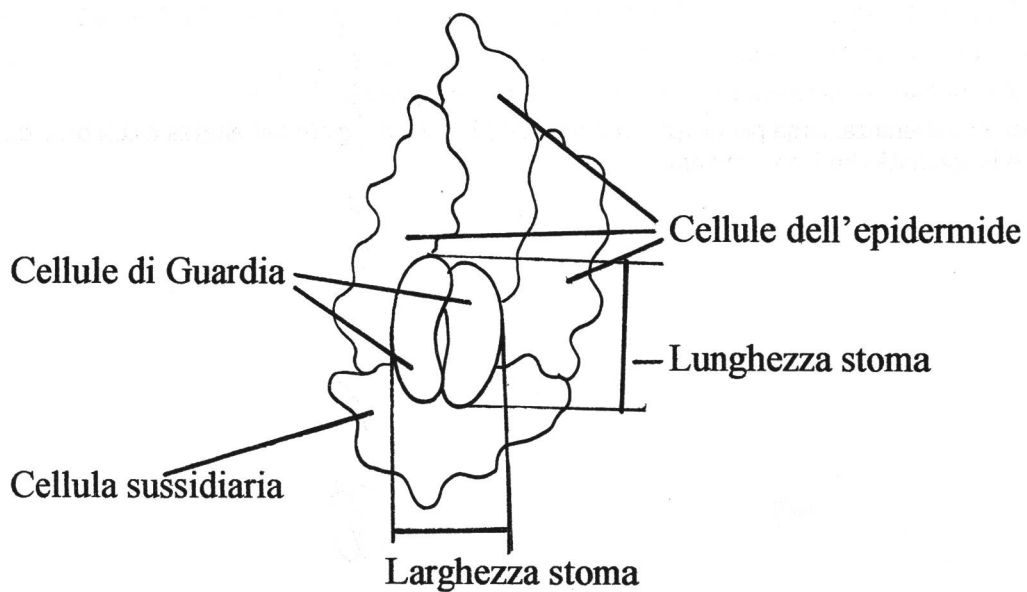


FIGURA 1

Stomi

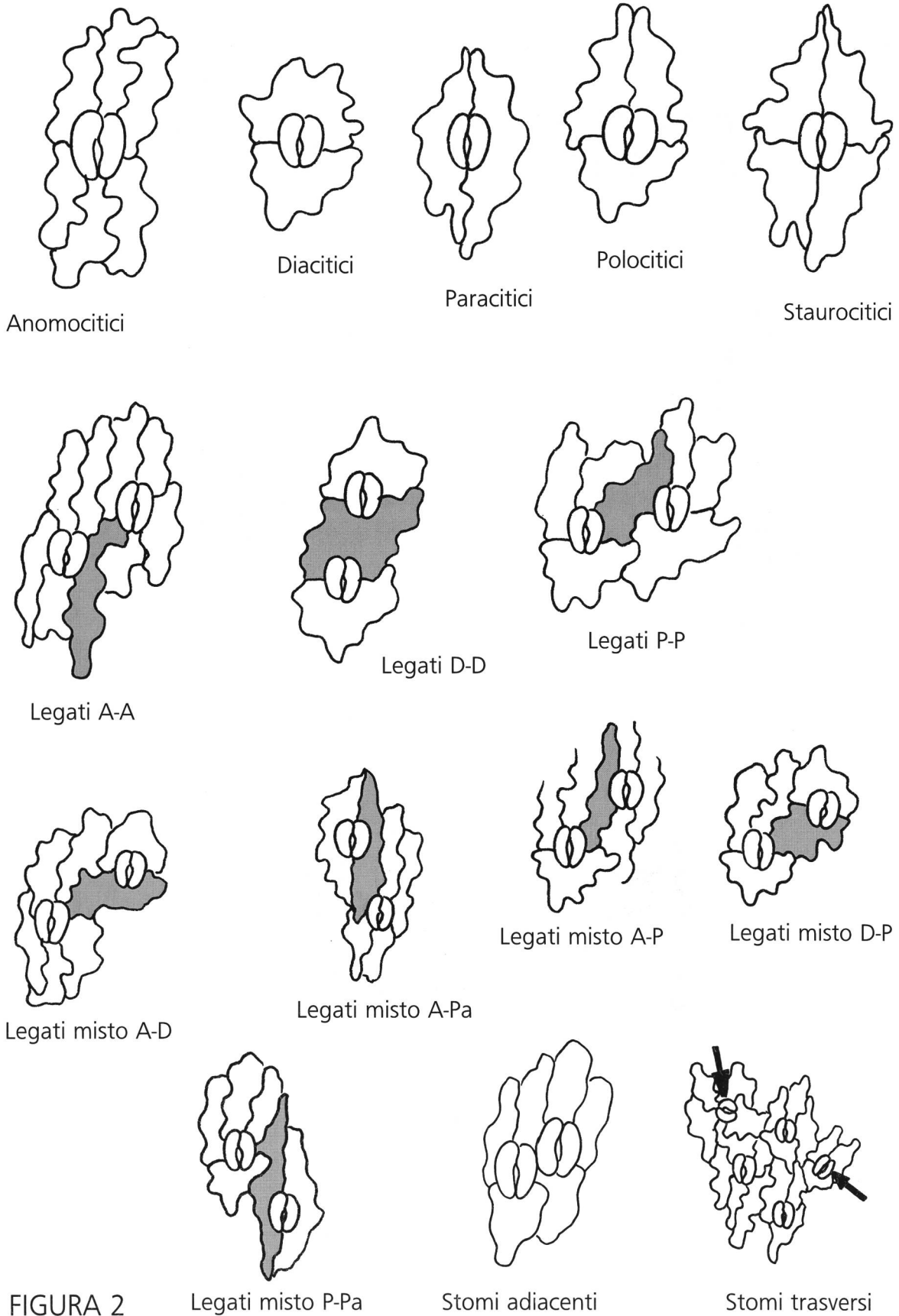
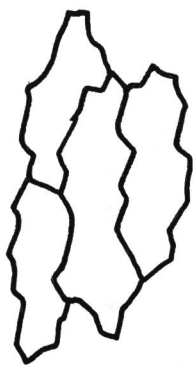
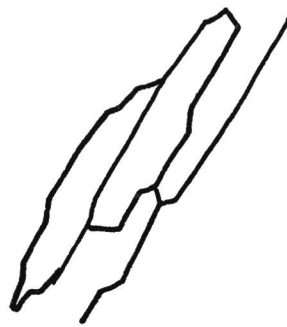


FIGURA 2

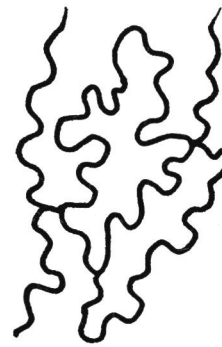
Cellule faccia adassiale



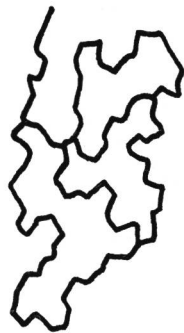
Angolate



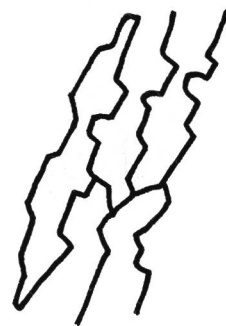
Lineari



Sinuose



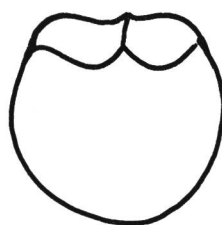
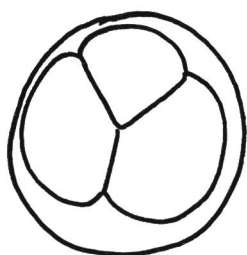
Sinuose-angolate



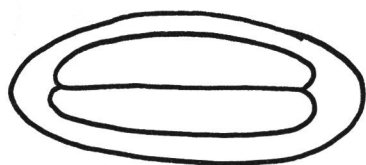
Sinuose-lineari

FIGURA 3

Tipi sporali



Spore trilete



Spore monolete

FIGURA 4

Superficie della Perina



echinulata



echinato



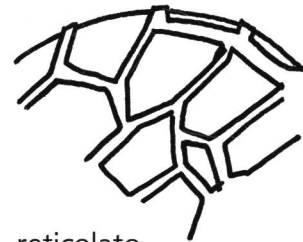
foveolato



granulato



psilato



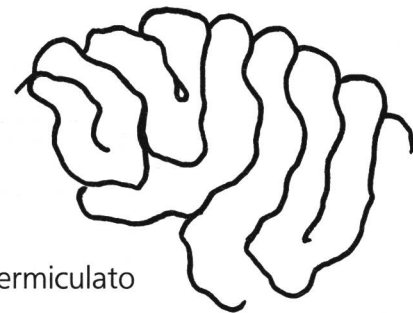
reticolato



rugulata



scabrata



ectovermiculato



tuberculato

FIGURA 5

