

Zeitschrift: The Swiss observer : the journal of the Federation of Swiss Societies in the UK
Herausgeber: Federation of Swiss Societies in the United Kingdom
Band: - (1921)
Heft: 4

Werbung

Nutzungsbedingungen

Die ETH-Bibliothek ist die Anbieterin der digitalisierten Zeitschriften. Sie besitzt keine Urheberrechte an den Zeitschriften und ist nicht verantwortlich für deren Inhalte. Die Rechte liegen in der Regel bei den Herausgebern beziehungsweise den externen Rechteinhabern. [Siehe Rechtliche Hinweise.](#)

Conditions d'utilisation

L'ETH Library est le fournisseur des revues numérisées. Elle ne détient aucun droit d'auteur sur les revues et n'est pas responsable de leur contenu. En règle générale, les droits sont détenus par les éditeurs ou les détenteurs de droits externes. [Voir Informations légales.](#)

Terms of use

The ETH Library is the provider of the digitised journals. It does not own any copyrights to the journals and is not responsible for their content. The rights usually lie with the publishers or the external rights holders. [See Legal notice.](#)

Download PDF: 14.03.2025

ETH-Bibliothek Zürich, E-Periodica, <https://www.e-periodica.ch>

PROF. suisse, B. ès Sc. Licencié ès Lettres (Paris) etc., exc. réf., donne leçons de français, mathématiques. Préceptorat. Emonet, 8, Atherton Terrace, Gloucester Road, S.W. 7.

GLARNER SCHABZIEGER. In pieces of 100 gr. Prices on application. Samples at 9d. per piece (postage extra) from A. Wohlgenuth, 52, Gracechurch St., London, E.C.

WANTED General Maid in small family, good outings and comfortable situation. Apply evenings, 34, Esmond Road, Bedford Park, W. 4.

PRODUCE of Switzerland. Most delicious Gruyère Cheese, without crust, packed in boxes of 8½ oz., offered for sale at wholesale price of 2/6 each in quantities of not less than 10 boxes (postage extra).—W. Studer, 30, York Rd., Waterloo, S.E. 1.

BOARD-RESIDENCE, 13, Tighbury Hill, N. 5. Good food, homely, moderate terms.

FOR THE YOUNG FOLKS.

SWISS DRAWING & PAINTING BOOKS
(EDITION COLOR)

By Prof. W. Schneebeli, Prof. Ed. Renggli and Herbert Rikli.

Now on sale at

BARKER'S, HARROD'S, GAMAGE'S, LECHERTIER'S, WHITELEY'S, etc.

Specially recommended on account of their high educational value.

CROWE & CO. (London) Ltd.

Freight & Insurance Contractors,
General Shippers & Forwarding Agents.

Head Office: 158, Bishopsgate, LONDON, E.C. 2

Telegrams: Inland—Crowefalco, Phone, London.
Foreign—Crowefalco, London.
Telephones: London Wall 6510 and 6511.

Branches at { 20, Cooper Street, MANCHESTER.
24, North John Street, LIVERPOOL.

General Agents for the United Kingdom of the Société Suisse de Remorquage, Basle, who maintains a regular service on the Rhine from Antwerp and Rotterdam to Basle.

Agents of the Dominion Express Co. of Canada.

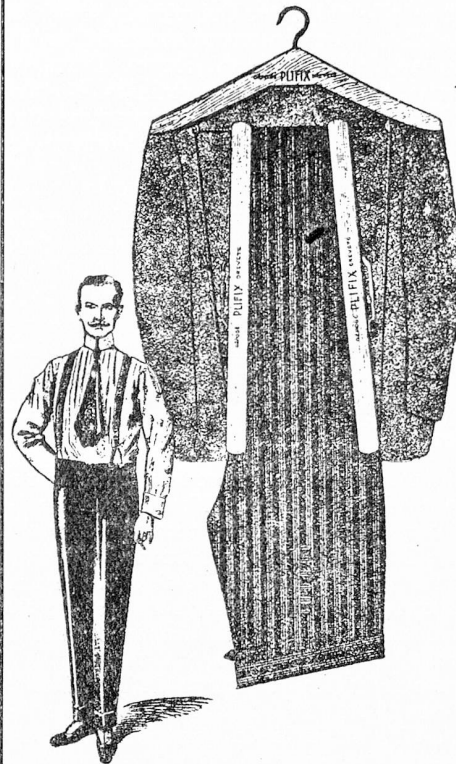
Fastest and most regular goods service to and from Switzerland, via Harwich and Antwerp, through the Great Eastern Railway Co. of London.

Agencies:

- In SWITZERLAND: Basle, St. Gall, Zurich, Chiasso.
- In FRANCE: Paris, Bordeaux, Marseilles, Dunkirk, Strasbourg and Mulhouse.
- In ITALY: Milan, Rome, Como, Genoa.
- In BELGIUM: Antwerp.

Reliable Correspondents all over the world.

LATEST, BEST AND CHEAPEST OF ITS KIND.



“Plifix”
Trousers
Press and
Coathanger

Price
15/-

Obtainable from Tailors or direct from

Alter & Ruefly

24, Budge Row,
Cannon St., E.C. 4.

TELEPHONE:
CITY 7335.

BARCLAYS BANK
LIMITED.

Head Office: 54, Lombard St., London, E.C. 3.

Authorised Capital	£20,000,000
Paid up Capital . . .	£15,355,002
Reserve Fund . . .	£8,000,000
Deposits (30/6/1920)	£314,240,722

Every banking facility is provided for merchants and others interested in the ANGLO-SWISS TRADE.

Chief Foreign Branch: 168, Fenchurch St., London, E.C. 3.
West End Foreign Branch: 1, Pall Mall East, London, S.W. 1.

The Bank has over 1500 branches in England and Wales, and agents and correspondents in all the principal towns throughout the World.

AFFILIATED BANKS:

- THE BRITISH LINEN BANK, Head Office, Edinburgh.
- THE UNION BANK OF MANCHESTER, Ltd., Head Office, Manchester
- THE ANGLO-EGYPTIAN BANK, Ltd., Head Office, 27, Clements Lane, London, E.C. 4.

Kindly address all enquiries to:

The Manager, BARCLAYS BANK LIMITED,
WEST END FOREIGN BRANCH,
1, Pall Mall East, S.W. 1.