

Zeitschrift: The Swiss observer : the journal of the Federation of Swiss Societies in the UK
Herausgeber: Federation of Swiss Societies in the United Kingdom
Band: - (1925)
Heft: 225

Autor: [s.n.]
Nachruf: Gottfried Lüthy †

Nutzungsbedingungen

Die ETH-Bibliothek ist die Anbieterin der digitalisierten Zeitschriften. Sie besitzt keine Urheberrechte an den Zeitschriften und ist nicht verantwortlich für deren Inhalte. Die Rechte liegen in der Regel bei den Herausgebern beziehungsweise den externen Rechteinhabern. [Siehe Rechtliche Hinweise.](#)

Conditions d'utilisation

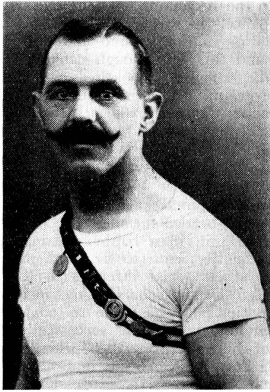
L'ETH Library est le fournisseur des revues numérisées. Elle ne détient aucun droit d'auteur sur les revues et n'est pas responsable de leur contenu. En règle générale, les droits sont détenus par les éditeurs ou les détenteurs de droits externes. [Voir Informations légales.](#)

Terms of use

The ETH Library is the provider of the digitised journals. It does not own any copyrights to the journals and is not responsible for their content. The rights usually lie with the publishers or the external rights holders. [See Legal notice.](#)

Download PDF: 26.11.2024

ETH-Bibliothek Zürich, E-Periodica, <https://www.e-periodica.ch>



GOTTFRIED LUTHY †.

Thursday, November the 19th, gathered various representatives of London Swiss Societies and friends at the St. Pancras Cemetery, Finchley, to pay their last tribute and honour to Mr. G. Luthy (39) from Herzogenbuchsee (Berne), residing at 215, Stanhope St., Hampstead Rd., N.W.1, a well-known member of the Swiss Colony in London for many years past, who suddenly succumbed last Saturday at the Dalston Hospital to the effects of a serious operation.

It is with our deepest sympathy and regret that we make this announcement, for Mr. Luthy's departure from our midst means a great loss to the Swiss Gymnastic Society in London, particularly the late Gymnastic Society "Schweizerbund," of which deceased was a prominent, energetic member and president, until ill-health forced him to relinquish his duties shortly before the amalgamation. It was Mr. Luthy who, thanks to his unceasing endeavours, brought the Gymnastic Society "Schweizerbund" to life again five years ago after a complete collapse in membership and support. With an entirely new committee and very few members he succeeded in reviving the spirit of enthusiasm in gymnastics, which had long been dormant among the Swiss gymnasts in London. His own personality and tender-heartedness contributed much to the influence and confidence he powerfully possessed over his supporters throughout his career, which facts, we must admit, have helped to save gymnastics among the Swiss in London. Apart from his knowledge of gymnastics, he was, in his younger days, a good wrestler through his well-mastered technique, and our English friends and supporters always addressed him as an all-round sportsman. He gained their full confidence a few years ago, when the Metropolitan and Southern Counties Amateur Gymnastic Association made him a committee member as representative of the Swiss gymnasts. The editor of the well-known English sporting journal "Health and Strength," whose representative for gymnastics paid several visits to our Gymnastic Hall at Charlotte Street, proved his appreciation of Mr. Luthy's methods and good work by the following article, issued in his paper on June 14th, 1924:—

"One need but pay a casual visit to the Swiss Gymnastic Club (Schweizerbund), 74, Charlotte Street, W.1, on any Wednesday evening after 9.30, in order to be convinced of the thorough and careful manner in which the arts of Gymnastics and Wrestling are practised in this particular rendez-vous under the vigilant supervision and coaching of Mr. G. Luthy (President) and the Secretary. We were not surprised to learn that, in common with all sporting clubs and gymnasiums, the above club has passed through many vicissitudes of late, and that its present vitality was due, almost entirely, to the indefatigable efforts and vigilance of the two gentlemen above mentioned."

On behalf of the members of Swiss Gymnastic circles in London it is my duty to express our heartfelt sympathy with his widow and children, for Mr. Luthy has well earned his respect and honour. His motto has always been: "Un pour tous, tous pour un." He worked for the benefit of all; now it is our turn to work for him—let us pray to God to give him his due, as we have not been able to do so. Good bye, Dear Friend, may we meet again!

"A GYMNAST."

SWISS MERCANTILE SOCIETY.

(Communicated.)

The last monthly meeting of the Swiss Mercantile Society, preceded by a "Souper Choucroute," was held on the 11th inst. at the Union Helvetia, attended by 30 members.

Amongst them the Committee noticed with pleasure some of the older members, and it is hoped that they will in increasing numbers be present at future meetings.

The minutes being read and passed, the President, Mr. A. C. Stahelin, reported 9 admissions and 3 resignations.

Correspondence included invitations by the Swiss Rifle Association and the City Swiss Club for their respective Annual Banquets. The footnotes on the circulars, notifying the members of the monthly meetings, seem to rouse objections in the minds of some members, while others, no doubt, will follow the lead of the one who took the appeal seriously by favouring the President with his photograph. The Committee hopes that the majority of the members will take the note in the spirit in which it was meant, and put in an appearance at the meetings whenever possible. The meeting closed at 10 p.m.

CITY SWISS CLUB.

Messieurs les membres sont avisés que la prochaine

Assemblée Mensuelle

aura lieu le MARDI, 1 DECEMBRE au Restaurant PAGANI, 42, Gt. Portland Street, W.1 et sera précédée d'un souper à 7 h. (prix 5/6).

Pour faciliter les arrangements, le Comité recommande aux participants de s'annoncer au plus tôt à M. P. F. Boehringer, 25, Leonard St. E.C. 2. (Téléphone: Clerkenwell 9595).

Ordre du Jour :

Procès-verbal. Admissions. Démonstrations. Divertissements.

Telephone: 2982. Museum 2982. Telegrams: Foy Suisse, London.

Foyer Suisse 12 to 14, Upper Bedford Place W.C. 1.

(Nearest Tube Station: Russell Square.)

Swiss Art Exhibition.

A fine collection of water-colours, by W. Bollier, has been kindly sent us (sale or return) and will be exhibited for the next few weeks in the banquet hall. Open to the public every afternoon free.

WILLY MEYER, Manager.

UNION HELVETIA CLUB,

1, Gerrard Place, Shaftesbury Avenue, W.1. Telephone: REGENT 5892.

30 Bedrooms. 45 Beds.

SUISSE CUISINE, CIGARS AND WINES.

Luncheons & Suppers à prix fixe or à la carte at Moderate Prices.

Every Wednesday from 7 o'clock

Hasenpfeffer, Choucroute & Schüblig, Choucroute & Rippli, BILLIARDS, SKITTLES.

Large and small Halls with Stage, available for Concerts, Dinners, Wedding Parties, etc.

Membership Fee: One Guinea per annum.

New Members welcome. The Clubhouse Committee.

SWISS RIFLE ASSOCIATION.

The

Final Competition

of this year's Season, combined with an

Auction Sale of the remaining Bar Stock,

will take place on

SUNDAY, NOVEMBER 22nd,

at

The Rifle Range at Hendon.

G. CUSI, Commission Agent, 52, SHAFTESBURY AVENUE, PICCADILLY, LONDON, W.1.

Member of the Turf Guardian Society and National Sporting League. Telegrams: Nostril, Piccy, London. Telephone: Gerrard 815-816. Trunk: Gerrard 2191.

TO KEEP MERRY AND FIT drink of those excellent Swiss Wines supplied by

W. WETTER, 67, Grafton Street, Fitzroy Sq., W.1.

White Neuchâtel ... 46/- doz. Valais Pendant ... 49/- doz. Red ... 54/- .. Johannisberg ... 50/- .. Dezaley ... 48/- .. Dole red Valais ... 57/- .. Terms: Net Cash. Carriage paid London. Orders immediately executed.

FABRIQUE SUISSE ARTICLES

pour CONFISERIE accorderait à maison ou personne sérieuse, de

préférence Suisse, REPRESENTATION pour Angleterre. Affaire intéressante. Ecrire "Confiserie," Swiss Observer, Leonard Street, London, E.C. 2.

SWISS BANK CORPORATION,

99, GRESHAM STREET, E.C.2.

and 11c, REGENT STREET, S.W. 1.

By arrangement with the Swiss Postal Authorities, TRAVELLERS' CHEQUES, which can be cashed at any Post Office in Switzerland, are obtainable at the Offices of the Bank.

The WEST END BRANCH open Savings Bank Accounts on which interest will be credited at 3 per cent. until further notice.

Swiss Mercantile Society

The members and friends of the Swiss Mercantile Society are reminded of the second

CINDERELLA DANCE

of the Season 1925/26 which takes place on **SATURDAY, DECEMBER 5th,** from 6.30 to 11.45 p.m., at the

MIDLAND GRAND HOTEL, ST. PANCRAS STATION, N.W.

The Entertainment Committee trust that a large attendance will contribute to the success of the evening.

Tickets may be obtained from any Committee Member or at 24, Queen Victoria Street, E.C.4 and 1-2, Henrietta Street, Strand, W.C.2 (Telephones: City 7749 and Regent 3425).

Evening Dress is optional.

SWISS INSTITUTE.

The Swiss Institute extend a cordial invitation to all Swiss and their friends to attend their

SUNDAY AFTERNOON CONCERT

BY THE SWISS INSTITUTE ORCHESTRA and ARTISTS, ON

November 29th, at 3.15 p.m.,

AT **ST. MARYLEBONE HALL,** 181, Marylebone Rd., N.W.1.

(Entrance Seymour Place). Nearest Tube Stations: Edgware Rd., Baker St. and Marylebone.

Divine Services.

EGLISE SUISSE (1762), 79, Endell St., W.C.2 (Langue française.)

Dimanche, 22 Nov., 11h.—M. le Pasteur Lelièvre—par échange.

3h.—6h. au Foyer.—Club Missionnaire des enfants de l'Ecole du Dimanche.

6h. 30.—Service liturgique mensuel. Soli, Haendel, Dvorak; duos violon, Durante, etc.

Samedi, 21 Nov., 7h. 45.—"Au pays du Soleil," causerie du pasteur R. Hoffmann-de Visme, avec projections lumineuses, suivie de thé, au Foyer, 15, Upper Bedford Place, Russell Sq., W.C.1. Invitation cordiale à chacun.

BAPTEME.

Rosemary Eileen Minnie NELSON, née le 25 Juillet 1923, fille de Robert Alexander et d'Evelyn Aida née Kirby—le 18 Nov. 1925.

SCHWEIZERKIRCHE

(Deutschschweizerische Gemeinde)

St. Anne's Church, 9, Gresham Street, E.C.2.

Sonntag, 22. November, 11 Uhr vorm.—Gottesdienst. 6.30 Uhr abends.—Gesangsgottesdienst.

Pfr. C. Th. Hahn.

FORTHCOMING EVENTS.

Wednesday, Nov. 25, at 7.30.—ASSOC. OF BRITISH MEMBERS OF THE SWISS ALPINE CLUB: Annual Winter Dinner at the Oak Room, Hotel Victoria, Northumberland Avenue, W.C.2.

Friday, Nov. 27th, at 6.30.—CITY SWISS CLUB: Annual Banquet and Ball at the Victoria Hotel, Northumberland Avenue, W.C.

Sunday, Nov. 29th, at 3.15.—SWISS INSTITUTE: Concert at St. Marylebone Hall, 181, Marylebone Road, N.W.1. (See adv.)

Tuesday, Dec. 1st, at 7 p.m.—CITY SWISS CLUB: Monthly Meeting, preceded by a Supper, at Pagani's Restaurant, W.1.

Saturday, Dec. 5th, at 6.30.—SWISS MERCANTILE SOCIETY: Cinderella Dance at the Midland Hotel, St. Pancras, N.W.

Sunday, Dec. 6th, at 3 p.m.—SWISS GYMNASIIC SOCIETY: Gymnastic Display at No. 1, Gerrard Place, W.1.

Printed and Published for the Proprietor, P. F. BOHRINGER, by THE FRIDRICK PRINTING CO. LTD., at 25, LEONARD ST., LONDON, E.C.

Pension Suisse 20 Palmeira Avenue, WESTCLIFF-ON-SEA.

Highly recommended. Every comfort. Continental cuisine. Billiards. Sea front.

Phone: Southend-on-Sea 1132 Proprietress: Mrs. Albrecht-Meneghelli