

Zeitschrift: The Swiss observer : the journal of the Federation of Swiss Societies in the UK
Herausgeber: Federation of Swiss Societies in the United Kingdom
Band: - (1948)
Heft: 1084

Artikel: Knighthood of the legion d'honneur for Ginette Bingguely-Lejeune
Autor: [s.n.]
DOI: <https://doi.org/10.5169/seals-687426>

Nutzungsbedingungen

Die ETH-Bibliothek ist die Anbieterin der digitalisierten Zeitschriften. Sie besitzt keine Urheberrechte an den Zeitschriften und ist nicht verantwortlich für deren Inhalte. Die Rechte liegen in der Regel bei den Herausgebern beziehungsweise den externen Rechteinhabern. [Siehe Rechtliche Hinweise.](#)

Conditions d'utilisation

L'ETH Library est le fournisseur des revues numérisées. Elle ne détient aucun droit d'auteur sur les revues et n'est pas responsable de leur contenu. En règle générale, les droits sont détenus par les éditeurs ou les détenteurs de droits externes. [Voir Informations légales.](#)

Terms of use

The ETH Library is the provider of the digitised journals. It does not own any copyrights to the journals and is not responsible for their content. The rights usually lie with the publishers or the external rights holders. [See Legal notice.](#)

Download PDF: 14.03.2025

ETH-Bibliothek Zürich, E-Periodica, <https://www.e-periodica.ch>

**KNIGHTHOOD OF THE LEGION D'HONNEUR
FOR GINETTE BINGGUELY-LEJEUNE.**

We have just heard that the French Government have conferred upon Madame Ginette Bingguely-Lejeune, wife of our compatriot, Henry Bingguely, of "The Heath," Fairlight, Sussex, the rank of Chevalier, in the Order of the Légion d'Honneur, in recognition of her distinguished work as a Sculptress.

Besides creating statues like "La Flamme Immortelle" (Salon de Paris) and "Forward to Freedom" (Royal Academy) Madame Bingguely-Lejeune has won an international reputation as a portraitist. Her pre-war busts of Rudyard Kipling (National Portrait Gallery) and Lord Nuffield (Nuffield Institute) are well remembered.

During the war, she made a remarkable bust of General de Gaulle and in 1945 she flew to Paris with it, at the invitation of the French Government. Exhibited at the Salon de Paris and purchased by the Nation, it is in the permanent collection of the Musée National d'Art Moderne.

Last year, Madame Bingguely-Lejeune exhibited with great success at the Salon de Paris the bust of Professor René Cassin, Vice-Président du Conseil d'Etat, Membre de l'Institut, and she is now engaged on two important works: one is the bust of Field-Marshal Montgomery and we rejoice in hearing that, last but not least, she is working with the greatest inspiration on the bust of General Henri GUIBAN from whom she had sittings last month in Switzerland.

The well merited Order of the Légion d'Honneur conferred upon her will bring joy to her numerous Friends and we express to the artiste our warmest congratulations.

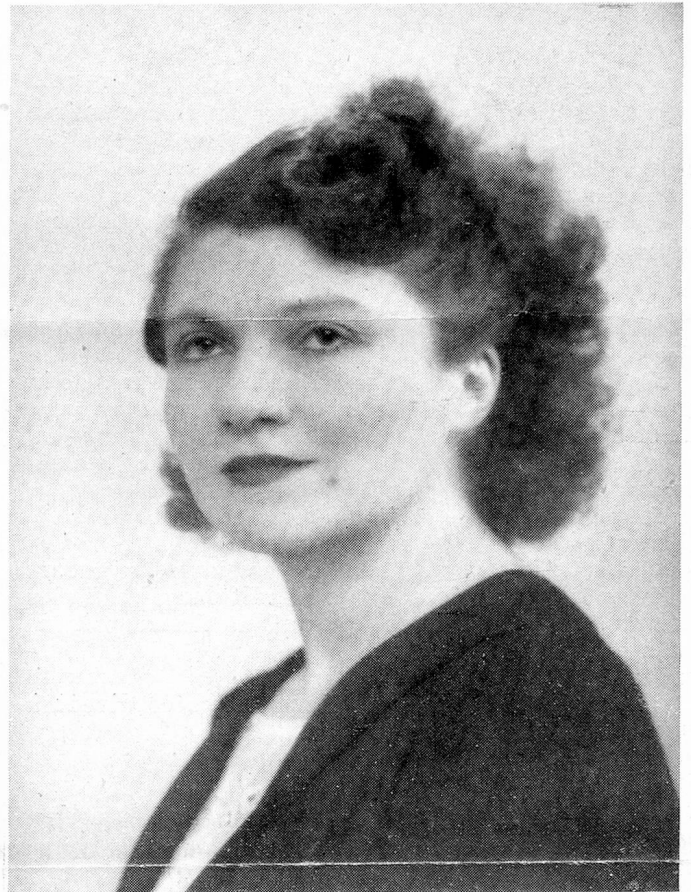
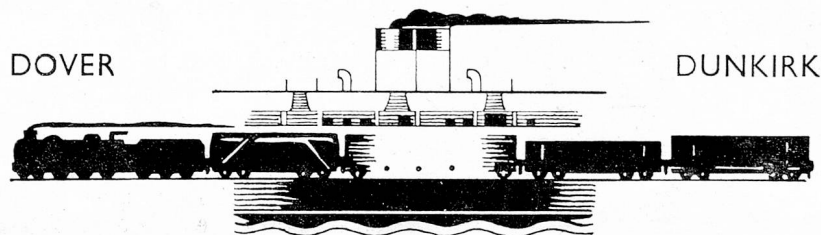


Photo by Kay Vaughan.

**TO and FROM
SWITZERLAND WITHOUT UNLOADING
SOUTHERN TRAIN FERRY**



TWO SAILINGS PER DAY IN EACH DIRECTION

Official Agents:

ACME TRANSPORT CO. LTD.

Head Office :— ACME HOUSE, 20, WHITECROSS STREET, LONDON, E.C.1.

Phones : MONarch 2692 (5 lines)

Cables : ACMETRANS BARB, LONDON.

GOTH & Co. Ltd.—Bale - Zurich - St. Gall - Geneva - Chaux de Fonds - Bienne - Chiasso

COMPLETE TRUCKS — GROUPAGE — MACHINERY — REMOVALS — ETC.