

Zeitschrift: The Swiss observer : the journal of the Federation of Swiss Societies in the UK
Herausgeber: Federation of Swiss Societies in the United Kingdom
Band: - (1962)
Heft: 1420

Werbung

Nutzungsbedingungen

Die ETH-Bibliothek ist die Anbieterin der digitalisierten Zeitschriften. Sie besitzt keine Urheberrechte an den Zeitschriften und ist nicht verantwortlich für deren Inhalte. Die Rechte liegen in der Regel bei den Herausgebern beziehungsweise den externen Rechteinhabern. [Siehe Rechtliche Hinweise.](#)

Conditions d'utilisation

L'ETH Library est le fournisseur des revues numérisées. Elle ne détient aucun droit d'auteur sur les revues et n'est pas responsable de leur contenu. En règle générale, les droits sont détenus par les éditeurs ou les détenteurs de droits externes. [Voir Informations légales.](#)

Terms of use

The ETH Library is the provider of the digitised journals. It does not own any copyrights to the journals and is not responsible for their content. The rights usually lie with the publishers or the external rights holders. [See Legal notice.](#)

Download PDF: 15.03.2025

ETH-Bibliothek Zürich, E-Periodica, <https://www.e-periodica.ch>

£72
FOR GOOD!



ACROW
DEMAG
BANTAM

**The fastest-selling, hardest-working
5 cwt hoist in the world - why?**

Because the name is Acrow Demag. Because exacting engineers and wise buyers the world over recognise the technical superiority behind that name. They know that an Acrow Demag hoist will reduce handling costs for longer, more efficiently and more reliably than any other. This is why it sells faster than any other. Install a Demag now and see...! An Acrow Demag hoist can be mounted static, or mobile on rails, and electric travelling motors can be fitted if required. Mountings can be adapted or ingeniously designed to meet almost any lifting need.

ACROW DEMAG TYPE P
The latest hoists from Acrow, ranging from 5 cwt to 10 tons, and providing the high speed answer to heavier handling problems.

ACROW DEMAG BRIDGE CRANES
Of single or double construction, designed and tailor made by Acrow at outstandingly low cost.

ACROW (ENGINEERS) LTD
Demag Division - South Wharf
London W2 - Tel: AMBassador 3456

BRANCHES: BELFAST · BIRMINGHAM · BRISTOL · CHESTERFIELD · GLASGOW · LEEDS
LIVERPOOL · MANCHESTER · NEWCASTLE · PENARTH · SAFFRON WALDEN · SOUTHAMPTON

people like you...

...go-getters... pace-setters... deserve that winter holiday in the snow! You're planning to make every moment count and you'll fly Swissair—that way the snow slopes are only eighty-five jet minutes away and fares are as low as £21. 11s. 0d. night tourist return.*

What's more, you like what you've heard about Swissair—the step-ahead airline that flies the world's most advanced passenger jet, the Convair 990 Coronado to the Middle and Far East, South America and Africa, sleek Caravelles to all parts of Europe and mighty DC-8 jets to North America. Up-and-coming people set high standards—that's why, wherever they go, people like you fly Swissair, the world's most passenger-conscious airline.

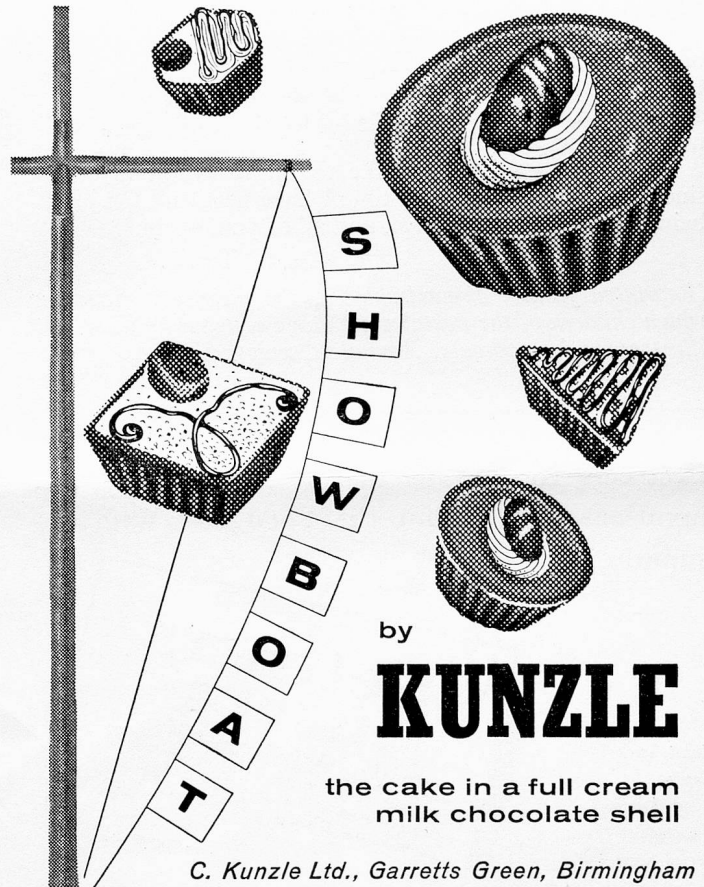
* London/Basle or Geneva —all U.K./Switzerland flights in association with BEA.



EUROPE
MIDDLE EAST
FAR EAST
NORTH AMERICA
SOUTH AMERICA · AFRICA

SWISSAIR

Consult your Travel Agent or Swissair office in
LONDON · MANCHESTER · BIRMINGHAM · GLASGOW · DUBLIN



by
KUNZLE

the cake in a full cream
milk chocolate shell

C. Kunzle Ltd., Garretts Green, Birmingham

M-W.119