

Zeitschrift: The Swiss observer : the journal of the Federation of Swiss Societies in the UK

Herausgeber: Federation of Swiss Societies in the United Kingdom

Band: - (1965)

Heft: 1490

Rubrik: Forthcoming events

Nutzungsbedingungen

Die ETH-Bibliothek ist die Anbieterin der digitalisierten Zeitschriften. Sie besitzt keine Urheberrechte an den Zeitschriften und ist nicht verantwortlich für deren Inhalte. Die Rechte liegen in der Regel bei den Herausgebern beziehungsweise den externen Rechteinhabern. [Siehe Rechtliche Hinweise.](#)

Conditions d'utilisation

L'ETH Library est le fournisseur des revues numérisées. Elle ne détient aucun droit d'auteur sur les revues et n'est pas responsable de leur contenu. En règle générale, les droits sont détenus par les éditeurs ou les détenteurs de droits externes. [Voir Informations légales.](#)

Terms of use

The ETH Library is the provider of the digitised journals. It does not own any copyrights to the journals and is not responsible for their content. The rights usually lie with the publishers or the external rights holders. [See Legal notice.](#)

Download PDF: 16.03.2025

ETH-Bibliothek Zürich, E-Periodica, <https://www.e-periodica.ch>

JULES LOUIS PAUL LAMBERT †

We announce with deep regret the death of Mr. Jules Louis Paul Lambert of Ballinger Grange, nr. Great Missenden, Bucks. He was born in Geneva 77 years ago and came to this country just before the first world war. He was in a firm of Merchant Bankers. We extend our sincere sympathy to his wife and son.

THE ZURICH SPEAKING CHORUS IN LONDON

On 8th November, music lovers were afforded an interesting experience with the first performance in this country of Schoenberg's cantata "Jacob's Ladder" at the Festival Hall in London. The performers included seven solo singers, the BBC Chorus, the London Symphony Orchestra and the Zurich Speaking Chorus and were conducted by Erich Schmid. The Swiss conductor was well received, and the "Sun" said that "The occasion marked a triumphant British debut for Erich Schmid". In the "Financial Times" it said that "For last night's performance the famous Zurich Speaking Chorus had been engaged, and made a marvellously articulate hubbub".

SWISSAIR EXTRA FLIGHTS FOR CHRITSMAS

In anticipation of heavy winter sports and holiday traffic Swissair is putting on forty extra flights from London to Switzerland between 17th December 1965 and 9th January 1966. A total of about 3,700 seats will be available in addition to the normal scheduled services.

All the extra flights will be operated by jet aircraft, about half by four-engined Convair Coronados and half by Caravelles.

Of the extra flights, thirty-four will be London to Zurich and six London to Geneva. Twenty-six of the extras will be low-fare night tourist services.

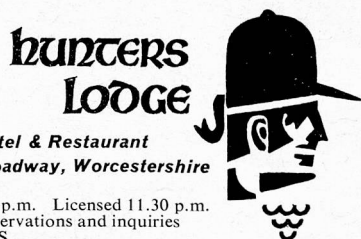
Peak travel days will be 23rd and 24th December, each with ten Swissair flights to Switzerland, and 2nd January when the airline will run eleven services.

ACKNOWLEDGMENT

We wish to thank the following subscribers for sending donations in addition to their subscriptions or their Christmas Greetings Charge, or for taking out or renewing gift subscriptions for friends or old-age pensioners: Mrs. J. Caulfeild, Mrs. M. Lugin, Miss Helen Nussbaum, Mrs H. G. Sutcliffe, Monsieur le Consul E. Ribi (Zagreb/Yugoslavia), and Messrs. O. Braga, A. T. Gafner, E. Gallizia, A. A. Haslimann, J. E. Jenny, W. W. Landauer, A. W. Mueller, G. Muller, P. Schnetz, W. R. Schweizer, J. Sieber, A. Strittmatter, F. E. Stuber. We are most grateful for their kind and welcome support.

Specialities include:

"Fondue"
"Fondue Bourguignonne"
"Entrecote Cafe de Paris"
"Fondue Maison"
"Raclette"



Hotel & Restaurant
Broadway, Worcestershire

Lunch: 12.30-2 p.m. Dinner: 7.30-11 p.m. Licensed 11.30 p.m.
Telephone: BROADWAY 3247 for reservations and inquiries
Proprietor: DENIS W. J. REYNOLDS

*The English Chamber Orchestra and Music Society Ltd.
in association with the Arts Council of Great Britain
presents*

CHRISTMAS CONCERT

made possible by

THE PETER STUYVESANT FOUNDATION

at the

CHURCH OF ST BARTHOLOMEW-THE-GREAT
Smithfield

(by kind permission of the Rector)

on Saturday 18th December at 6 pm

'L'ENFANCE DU CHRIST'

by Hector Berlioz

conducted by COLIN DAVIS with

PETER PEARS	Narrator
JOSEPHINE VEASEY	Mary
BRYAN DRAKE	Joseph
HEINZ REHFUSS	Herod and Householder
ROGER NORRINGTON	Centurion
JAMES ATKINS	Polydorus

ENGLISH CHAMBER ORCHESTRA

Leader: Emanuel Hurwitz

THE HEINRICH SCHUTZ CHORALE

Director: Roger Norrington

Admission by programme: 25/- 15/- 7/6

Obtainable from Chappell & Co. MAY 7600

and The Hon. Secretary, E.C.O. & M.S., 14 Hamilton Terrace,
London, N.W.8. (LOR 0440)

FORTHCOMING EVENTS

Every Sunday 7 to 11 p.m. — The Swiss Catholic Youth Club — Social at Westminster Ball Room, 30 Strutton Ground, S.W.1.

Every Thursday, from 6 to 7.30 p.m. — Discussion Circle in English — Young men specially invited. Tea from 6 to 6.15 p.m. Swiss Y.M.C.A., London Central Y.M.C.A. Building, Great Russell Street, W.C.1.

Every 1st Wednesday in the month — Secours Mutuels des Suisses à Londres — meeting at Swiss House, 35 Fitzroy Square, W.1, at 7 p.m.

Every last Thursday of the Month — Swiss Club Manchester — Ordinary Monthly Meeting from 6 p.m. at the Midland Hotel, Manchester.

NOVEMBER:

10th to 26th — Goldsmiths' Hall, Foster Lane, E.C.2; Monday-Friday 10 a.m.-5 p.m. — "Météorites et Bijoux" — EXHIBITION of Modern jewellery designed by Gilbert Albert.

Tuesday, 30th — 6 p.m. — Anglo-Swiss Society — ANNUAL GENERAL MEETING — Swiss Embassy, 77 Gloucester Place, W.1.

DECEMBER:

Wednesday, 8th — 7 p.m. — Swiss Mercantile Society — MONTHLY MEETING and FILM SHOW — Swiss House, 35 Fitzroy Square, W.1.

Friday, 10th — 6.30 for 7.15 p.m. — ESCALADE DINNER — Cercle Genevois de Londres — Dorchester Hotel — For details see special announcement in last issue.

- Saturday, 11th — 5 for 6 p.m. — DINER DES DOYENS — Eglise Suisse, 79 Endell Street, W.C.2. — (French-speaking Community) — Please apply to the Church.
- Wednesday, 15th — City Swiss Club — CHRISTMAS DINNER — Dorchester Hotel.
- Wednesday, 15th — 8 p.m. — ERICH SCHMID conducts BBC Symphony Orchestra — Royal Festival Hall.
- Thursday, 16th — Nouvelle Société Helvétique — SOIREE FAMILIALE.
- Thursday, 16th — 6.30 p.m. — SOUPER — CHOU-CROUTE POUR LES JEUNES — Eglise Suisse, 79 Endell Street, W.C.2.
- Friday, 17th — 7 for 7.30 p.m. — Schweizerbund (Swiss Club) — CHRISTMAS DINNER — Montana Hotel, 67 Gloucester Road, S.W.7.
- Saturday, 18th — 6 p.m. — Church of St. Bartholomew-the-Great, Smithfield — CHRISTMAS CONCERT — English Chamber Orchestra and The Heinrich Schuetz Chorale — "LENFANCE DU CHRIST" by Hector Berlioz — (see advertisement).
- Saturday, 18th — Swiss Club Manchester — CHRISTMAS PARTY.
- Sunday, 19th — 3 p.m. — FAMILY CHRISTMAS CELEBRATION — Eglise Suisse, 79 Endell Street, W.C.2. (French-speaking Community of the Swiss Church).
- Sunday, 19th — 5 p.m. — FAMILY CHRISTMAS CELEBRATION — St. Mary Woolnoth Church, Bank, E.C.3. (German-speaking Community of the Swiss Church). Children welcome. Old people or anybody unable to walk should apply in good time so that they can be collected by car.
- Friday, 24th — 8 p.m. — CHRISTMAS EVE SERVICE with Holy Communion — St. Mary Woolnoth Church, Bank, E.C.3. (German-speaking Community of the Swiss Church).
- Friday, 24th — 8 p.m. — Swiss Catholic Youth Club — CHRISTMAS CELEBRATION — Westminster Ball Room, 30 Stratton Ground, S.W.1. — Application to the Rev. J. Scherer essential not later than 21.12.
- Saturday, 25th — 11 a.m. — CHRISTMAS DAY SERVICE with Holy Communion — Eglise Suisse, 79 Endell Street, W.C.2. (French-speaking Community of the Swiss Church).
- Saturday, 25th — 11 a.m. — CHRISTMAS DAY SERVICE with Holy Communion — St. Mary Woolnoth Church, Bank, E.C.3. (German-speaking Community of the Swiss Church).
- Monday, 27th — 4 p.m. — SOIREE at Vicarage (French-speaking Community of the Swiss Church) Apply to Pastors.
- Friday, 31st — 7 p.m. — NEW YEAR'S EVE SERVICE — St. Mary Woolnoth Church, Bank, E.C.3 — followed by GET-TOGETHER (German-speaking Community of the Swiss Church).
- Friday 31st December, 8 p.m. — NEW YEAR'S EVE SERVICE with Holy Communion — Eglise Suisse, 79 Endell Street, W.C.2. Church open all night.

JANUARY :

- Saturday, 1st — 2.15 p.m. — SWISS CHILDREN'S ANNUAL CHRISTMAS PARTY — Victoria Hall, Bloomsbury Square, W.C.1. Please apply ENT. 1346.
- Sunday, 2nd — 4 p.m. — CHRISTMAS SERVICE of the Swiss Catholic Mission — HOLY MASS at St. Ann's Catholic Church, Abbey Orchard Street (off Victoria Street), S.W.1. — After Holy Mass, SWISS CATHOLIC CHILDREN'S PARTY at the Club Hall. Tea, Gifts for Children and Entertainment.
- Saturday, 29th — Swiss Mercantile Society — ANNUAL DINNER AND DANCE — Dorchester Hotel.

SWISS CHURCH

- SERVICES EN FRANÇAIS: à l'Eglise Suisse, 79 Endell Street, W.C.2, tous les *dimanches* à 11h00 et 19h00. L'Eglise est ouverte le dimanche: pour le lunch l'après-midi et le soir; le *jeudi*: dès 15h00 et le soir.
- PASTEUR: A. Nicod, 7 Park View Road, London N.3. Telephone: FIN 5281.
- SERVICES IN GERMAN: At St. Mary Woolnoth Church, Lombard Street, Bank, E.C.3, every Sunday at 11 a.m. and 7 p.m.
- PFARRER: M. Dietler, 1, Womersley Road, N.8. Telephone: MOU 6018.

SWISS CATHOLIC MISSION

- CHURCH and SERVICE: St. ANN's Catholic Church, Abbey Orchard Street (off Victoria Street), S.W.1.
- SUNDAYS: Holy Masses at 8, 9 and 11 a.m. with sermon in English. At 6 p.m. with sermon in German and French.
- HOLIDAYS OF OBLIGATION: Holy Masses at 7.30 and 9 a.m. and 5.45 p.m.
- WEEKDAYS: Holy Mass at 7.30 a.m.
- CONFESSIONS in German, French and Italian:
EVERY SUNDAY 1 hour before Evening Mass.
EVERY SATURDAY from 11 a.m. to 12.45 p.m. and from 5 to 7 p.m.
Every first, third and fifth Wednesday of the month from 3 to 6 p.m.
Every second and fourth Thursday of the month from 3 to 6 p.m.
At any other time by appointment.
- CHAPLAIN: Rev. Joseph Scherer, St. Ann's Church, Abbey Orchard Street, S.W.1. Tel.: ABBey 2895.

WELFARE OFFICE FOR SWISS GIRLS IN GREAT BRITAIN

(For Information, Advice or Help)

11 Belsize Grove, London N.W.3.

(Nearest Underground Station: Belsize Park)

RECEPTION HOURS

Tuesday, Wednesday, Thursday, Saturday

2 p.m. to 5 p.m. or by appointment.