

Zeitschrift: The Swiss observer : the journal of the Federation of Swiss Societies in the UK
Herausgeber: Federation of Swiss Societies in the United Kingdom
Band: - (1967)
Heft: 1526

Werbung

Nutzungsbedingungen

Die ETH-Bibliothek ist die Anbieterin der digitalisierten Zeitschriften. Sie besitzt keine Urheberrechte an den Zeitschriften und ist nicht verantwortlich für deren Inhalte. Die Rechte liegen in der Regel bei den Herausgebern beziehungsweise den externen Rechteinhabern. [Siehe Rechtliche Hinweise.](#)

Conditions d'utilisation

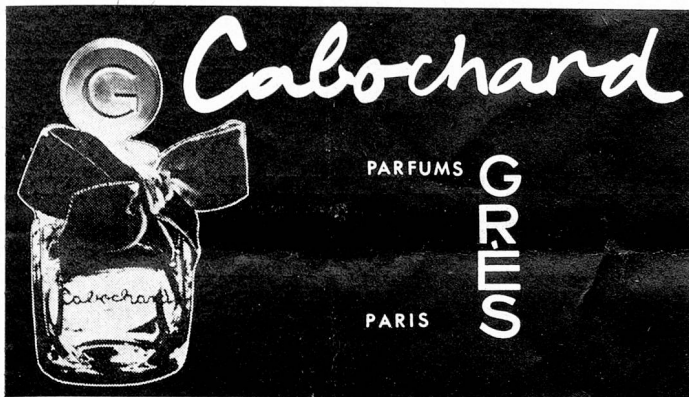
L'ETH Library est le fournisseur des revues numérisées. Elle ne détient aucun droit d'auteur sur les revues et n'est pas responsable de leur contenu. En règle générale, les droits sont détenus par les éditeurs ou les détenteurs de droits externes. [Voir Informations légales.](#)

Terms of use

The ETH Library is the provider of the digitised journals. It does not own any copyrights to the journals and is not responsible for their content. The rights usually lie with the publishers or the external rights holders. [See Legal notice.](#)

Download PDF: 15.03.2025

ETH-Bibliothek Zürich, E-Periodica, <https://www.e-periodica.ch>



Sole Distributors: Buser & Co. Ltd., 12 Grafton Street, W.1. Tel: 01-629 5977

THE PERSONAL TOUCH — that's what counts
For all travels—by land sea and air
 let **A. GANDON** make your reservations

Tickets issued at Station Prices no booking fee

HOWSHIP TRAVEL AGENCY

188, Uxbridge Road - Shepherds Bush W.12

Telephones: SHE 6268/9 and 1898

**THE
 ANGLO-SWISS INSURANCE &
 REINSURANCE AGENCY LTD.**

in collaboration with

**THE SWITZERLAND GENERAL INSURANCE
 COMPANY (LONDON) LTD.**

The Bowring Building, Tower Place, London E.C.3
 Telephone AVenue 3100

extend to you the benefit of their long experience in all insurance matters. The "SWITZERLAND" through the parent company "SCHWEIZ" ALLGEMEINE VERSICHERUNGS-AKTIEN-GESELLSCHAFT, ZURICH have a world-wide organisation in touch with present-day business conditions throughout the world. If you have any enquiries please do not hesitate to approach us.

**ELIZABETH HOUSE, FULWOOD PLACE
 HIGH HOLBORN, LONDON, W.C.1**

Telephone CHAncery 8554 (5 lines)

GEORG FISCHER AKTIENGESELLSCHAFT

SCHAFFHAUSEN, SCHWEIZ

+GF+

represented in the United Kingdom by

GF THE
GEORGE FISCHER (GREAT BRITAIN) LIMITED
 GROUP

comprising:

BRITANNIA IRON AND STEEL WORKS LIMITED Bedford

LE BAS TUBE COMPANY LIMITED London Manchester Brierley Hill Glasgow Belfast

BUNN & JOHNSON LIMITED Hitchin