

Zeitschrift: The Swiss observer : the journal of the Federation of Swiss Societies in the UK
Herausgeber: Federation of Swiss Societies in the United Kingdom
Band: - (1968)
Heft: 1546

Werbung

Nutzungsbedingungen

Die ETH-Bibliothek ist die Anbieterin der digitalisierten Zeitschriften. Sie besitzt keine Urheberrechte an den Zeitschriften und ist nicht verantwortlich für deren Inhalte. Die Rechte liegen in der Regel bei den Herausgebern beziehungsweise den externen Rechteinhabern. [Siehe Rechtliche Hinweise.](#)

Conditions d'utilisation

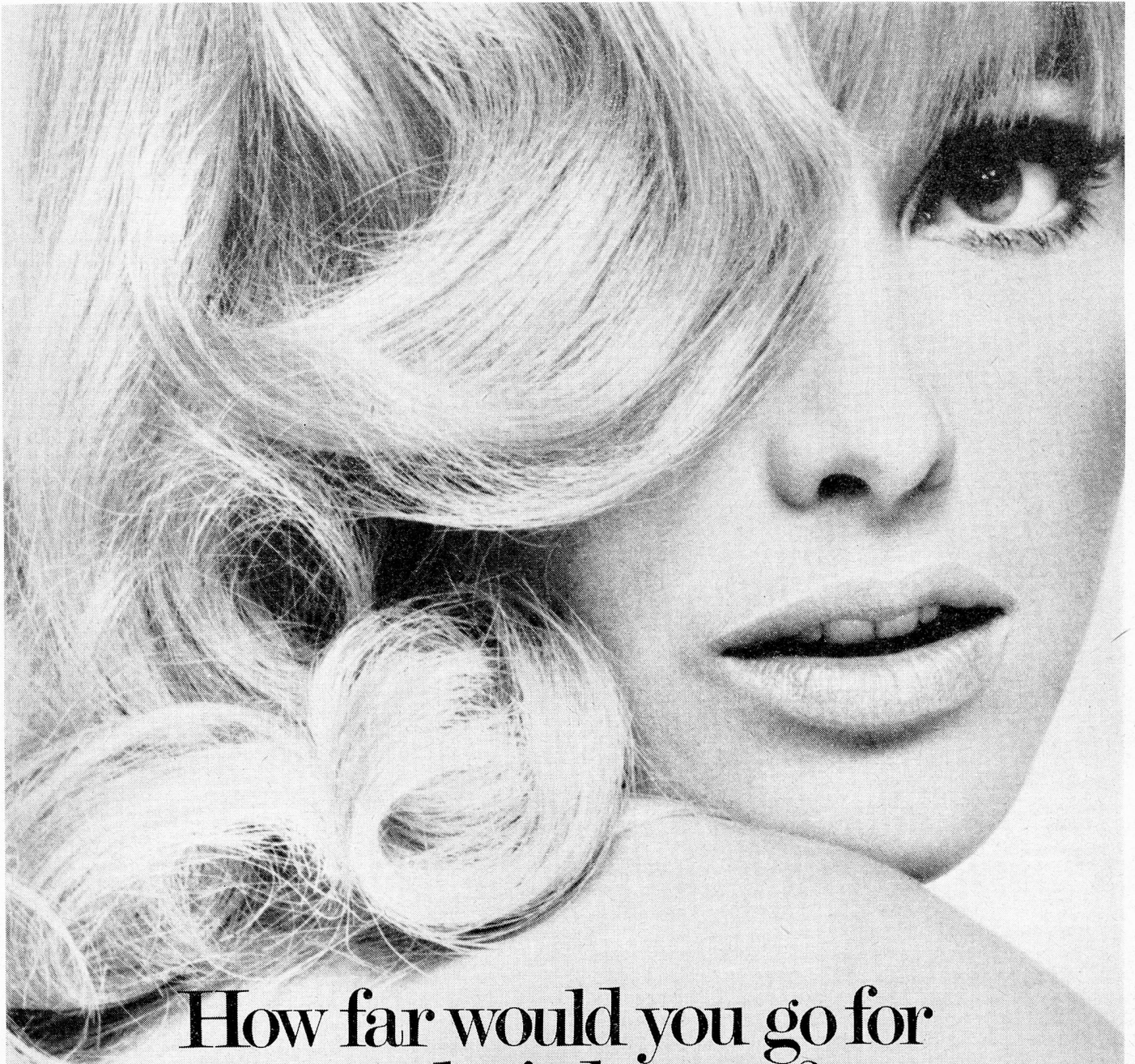
L'ETH Library est le fournisseur des revues numérisées. Elle ne détient aucun droit d'auteur sur les revues et n'est pas responsable de leur contenu. En règle générale, les droits sont détenus par les éditeurs ou les détenteurs de droits externes. [Voir Informations légales.](#)

Terms of use

The ETH Library is the provider of the digitised journals. It does not own any copyrights to the journals and is not responsible for their content. The rights usually lie with the publishers or the external rights holders. [See Legal notice.](#)

Download PDF: 01.04.2025

ETH-Bibliothek Zürich, E-Periodica, <https://www.e-periodica.ch>



How far would you go for your hairdresser?

To Switzerland for instance?
To Ryl, the country's top stylist
and hairdressing specialists?

Would you go for a salon that
relaxes a woman in a luxurious
cubicle all of her own, spoils
her with the top Swiss hair
stylists and beauticians, and
then pampers her with her own
private telephone so she can



catch up on her personal calls?

If you'd go that far for your
hairdresser then step up to
Leicester Square where a nice big
chunk of Switzerland awaits you.

*Parking facilities available by
arrangement. Open 8.00 a.m. to 7.00 p.m.
Monday to Saturday inclusive.
Awarded the Coupe d'Or du
Bon Goût Français.*

OF SWITZERLAND, The Swiss Centre, Leicester Square, W.1. 01-734 3312. Paris: 374 Rue St. Honoré.

Ryl cosmetics and hair preparations are the best in the world—try them soon!

Ryl