

**Zeitschrift:** The Swiss observer : the journal of the Federation of Swiss Societies in the UK

**Herausgeber:** Federation of Swiss Societies in the United Kingdom

**Band:** - (1977)

**Heft:** 1729

**Rubrik:** Swiss Catholics in London

### **Nutzungsbedingungen**

Die ETH-Bibliothek ist die Anbieterin der digitalisierten Zeitschriften. Sie besitzt keine Urheberrechte an den Zeitschriften und ist nicht verantwortlich für deren Inhalte. Die Rechte liegen in der Regel bei den Herausgebern beziehungsweise den externen Rechteinhabern. [Siehe Rechtliche Hinweise.](#)

### **Conditions d'utilisation**

L'ETH Library est le fournisseur des revues numérisées. Elle ne détient aucun droit d'auteur sur les revues et n'est pas responsable de leur contenu. En règle générale, les droits sont détenus par les éditeurs ou les détenteurs de droits externes. [Voir Informations légales.](#)

### **Terms of use**

The ETH Library is the provider of the digitised journals. It does not own any copyrights to the journals and is not responsible for their content. The rights usually lie with the publishers or the external rights holders. [See Legal notice.](#)

**Download PDF:** 14.03.2025

**ETH-Bibliothek Zürich, E-Periodica, <https://www.e-periodica.ch>**

# PATIENCE REWARDED AT LAST

On 17th February, 1972, St. Ann's Church in Abbey Orchard Street, Westminster was closed down for redevelopment and the chaplain for the Swiss has been rehoused at 48 Great Peter Street from where he conducted the services. The urgent need for a chapel which is of easy approach and would serve the Catholics and the Protestants among the many young Swiss became more and more apparent.

The necessary renovation work at the John Southworth Centre provided the space. The Swiss Bishops – through the Swiss Catholic Lenten Fund – and the Federation of Swiss Protestant Churches together in a generous gesture of solidarity provided the necessary funds.

At long last the patience of the members of the Swiss churches in London has been rewarded. On Saturday, 19th February the Swiss Catholic Mission's new chapel of St. John was officially consecrated in the presence of our Ambassador and Mme. Thalmann and other distinguished guests. The consecration was celebrated by the Apostolic Delegate, the Rt. Rev. Archbishop Bruno Heim, assisted by the Bishop of Fulham and Gibraltar to give the event a truly ecumenical flavour.

With the completion of this small but beautiful chapel the members of the Swiss churches in London once again have a home to call their own.

Artistically the centre is well worth

a visit. Members of the Devon Guild of Craftsmen, led by Peter Tysoe, produced the unusual stained glass windows, while Alan Peters designed and fashioned the furniture.

Building began in April, 1976. On 28th July, 1976, the first divine service was held while the finishing work went on. Some difficulty with builders, etc.,

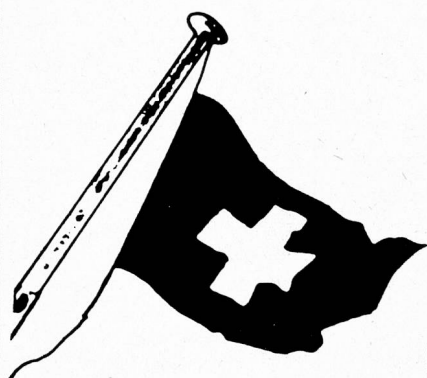
have caused the official opening to be deferred to the middle of February, 1977.

The centre's location also emphasises its ecumenical nature, it is situated almost mid-way between Westminster Cathedral and Westminster Abbey.

W.G.S.



From left to right, Father Paul Bossard, the Bishop of Fulham, the assistant priest of St. Matthew's Anglican Church, Archbishop Bruno Heim, the Reverend D. Müller and the Reverend P. Jungi.



## ZURICH

**Weekly departures  
for  
7 and 14 days**

**PRICES FROM: £49**

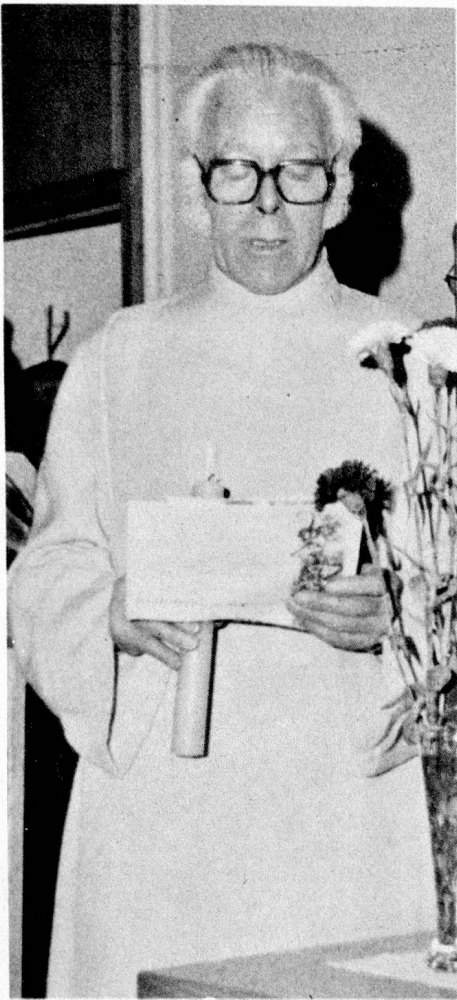
*Price includes:*

- ★ RETURN JET FLIGHT (EX. GATWICK)
- ★ PORTERAGE AT AIRPORT
- ★ TOURIST ACCOMMODATION, EN PENSION, ON BED AND BREAKFAST BASIS
- ★ BAGGAGE ALLOWANCE – 15 kilos (33 lb.)

*Contact:*

CROSSGATES TRAVEL LTD.  
37 St. MARTINS COURT, St. MARTINS LANE  
LONDON WC2N 4AL  
Telephone: 01-836 0364  
IN CONJUNCTION WITH PAGE AND MOY. A.T.O.L. 133 BC

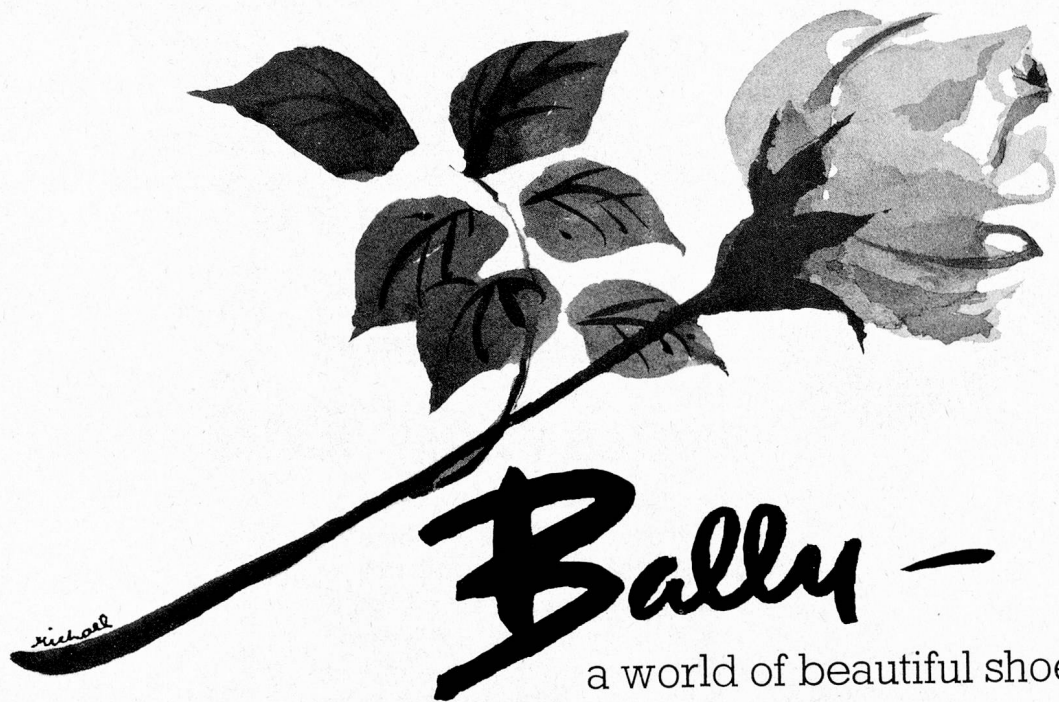
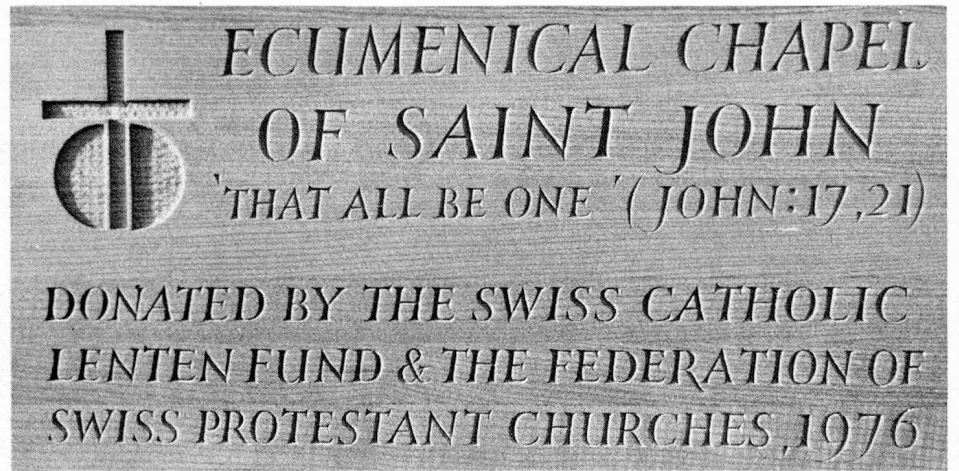




The Reverend Paul Bossard reads the congratulatory telegram from the Bishop of Basle.



The Apostolic Delegate with the Reverend Paul Jungi hand over the Cross to the Reverend Denis Müller, representative of the Federation of Swiss Protestant Churches.



**Bally** -

a world of beautiful shoes

116 New Bond Street W1  
 30 Old Bold Street W1  
 260 Regent Street W1  
 246 Oxford Street W1

372 Oxford Street W1  
 Swiss Centre Leicester Sq. W1  
 36 Savile Row W1  
 9 Sloane Street SW1

197 Brompton Road SW3  
 132 Kings Road SW3  
 19 Heath Street Hampstead NW3  
 49 Golders Green Road NW11

46 King Street Manchester 2