

Zeitschrift: The Swiss observer : the journal of the Federation of Swiss Societies in the UK

Herausgeber: Federation of Swiss Societies in the United Kingdom

Band: - (1978)

Heft: 1741

Rubrik: Business news

Nutzungsbedingungen

Die ETH-Bibliothek ist die Anbieterin der digitalisierten Zeitschriften. Sie besitzt keine Urheberrechte an den Zeitschriften und ist nicht verantwortlich für deren Inhalte. Die Rechte liegen in der Regel bei den Herausgebern beziehungsweise den externen Rechteinhabern. [Siehe Rechtliche Hinweise.](#)

Conditions d'utilisation

L'ETH Library est le fournisseur des revues numérisées. Elle ne détient aucun droit d'auteur sur les revues et n'est pas responsable de leur contenu. En règle générale, les droits sont détenus par les éditeurs ou les détenteurs de droits externes. [Voir Informations légales.](#)

Terms of use

The ETH Library is the provider of the digitised journals. It does not own any copyrights to the journals and is not responsible for their content. The rights usually lie with the publishers or the external rights holders. [See Legal notice.](#)

Download PDF: 01.04.2025

ETH-Bibliothek Zürich, E-Periodica, <https://www.e-periodica.ch>

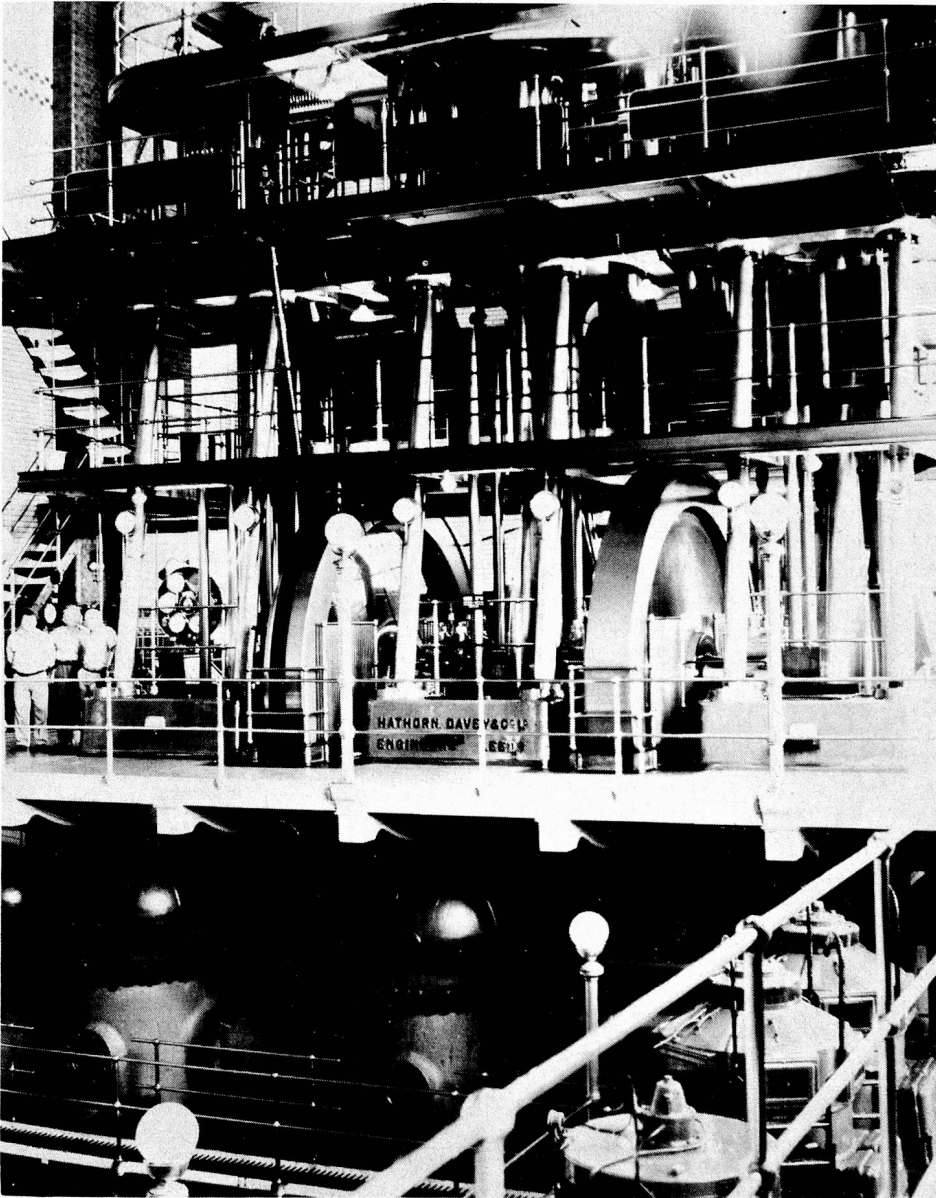
A WELL EARNED REST FOR A SULZER PUMP

After being in operation for some 412,000 hours, the Sulzer-Hathorn Pump Unit No. 6 at the Thames Water Authority pumping station, Walton-on-Thames, is being dismantled. First commissioned in 1926, it has been mainly used for feeding filtered water to the Honor Oak underground reservoir, which is located about 15 km away.

Designed and built by Hathorn Davey & Co, now a part of Sulzer Bros (UK) Ltd., it consumed per day approximately 17 t of coal (about 95 kWh) and 115 t steam at a pressure of 14 bar and 260°C. The complete unit has an internal triple expansion system and a reciprocating pump with cylinders of

25", 47" and 70" and a piston stroke of 60" each. One of the two flywheels (diameter 5 m, each with a weight of 22 t) has a circular barring rack which was engaged to an electric starting motor.

The pump itself consisted of three plungers, each containing an inner and outer piston (double piston). These were arranged in such a way that when both portions were bolted together, they pumped at a rate of 110,000 m³/day at 50 m head. If, however, the outer portions were bolted to the pump casing and only the internal portions were utilized, the discharge rate was 79,000 m³/day at 77 m head. The total weight of the pump and engine is about 500 t.



The Sulzer No. 6 unit at the Walton-on-Thames pumping station before it was dismantled.

BUSINESS NEWS

NEW SUCCESSES FOR THE SWISS WATCHMAKING INDUSTRY

The reliability and precision — in some cases to the thousandth of a second — of timing instruments manufactured by the Swiss watchmaking industry have ensured a leading position for these instruments in the field of sports timing. Thus out of the 46 World Cup and European Cup Alpine ski races held this season, Omega and Longines were responsible for timing 27, i.e. 60% of the total. Omega has been appointed official timekeeper for the third World Swimming Championships to be held in Berlin in August 1978. On this occasion, the Swiss firm will set up a giant electronic display board commanded by a calculator.

BIG BOLIVIAN ORDER

The Empresa Nacional de Electricidad, at Cochabamba, Bolivia, has signed a contract with Giovanola Bros. Co. Ltd. for the manufacture and assembly of an 8,760 ft. pressure pipeline for the Santa Isabel Power Station, which will provide electricity for the whole south eastern region of La Paz. The Swiss firm was able to win this important contract thanks to the tremendous experience that it has gained both at home and abroad.

(Giovanola Freres SA, CH-1870 Monthey, telex 24 473 giovach)

WATCHMAKING AND JEWELLERY IN BASLE

The European Watch and Jewellery Fair is being held in Basle from 15th to 24th April, within the framework of the Swiss Industries Fair (which is the oldest and biggest trade fair in the country). The Watch and Jewellery Fair is the biggest fair in the world for watchmaking, jewellery and allied branches: over 1,200 exhibitors from 13 European countries, in halls extending over an area of 660,000 sq. ft. The main groups of products exhibited comprise mechanical, electrical and electronic watches, clocks and alarm clocks, and gold, silver and fancy jewellery, precious stones and silverware. A central "exchange" for information and contacts caters for specialised buyers from all countries.

(Europäische Uhren- und Schmuckmesse, Postfach, CH-4021 Basel, telex 62 685 fairsch)