

Zeitschrift: The Swiss observer : the journal of the Federation of Swiss Societies in the UK
Herausgeber: Federation of Swiss Societies in the United Kingdom
Band: - (1979)
Heft: 1754

Artikel: Romainmôtier - a haven for artists in the Swiss Jura Mountains
Autor: [s.n.]
DOI: <https://doi.org/10.5169/seals-690620>

Nutzungsbedingungen

Die ETH-Bibliothek ist die Anbieterin der digitalisierten Zeitschriften. Sie besitzt keine Urheberrechte an den Zeitschriften und ist nicht verantwortlich für deren Inhalte. Die Rechte liegen in der Regel bei den Herausgebern beziehungsweise den externen Rechteinhabern. [Siehe Rechtliche Hinweise.](#)

Conditions d'utilisation

L'ETH Library est le fournisseur des revues numérisées. Elle ne détient aucun droit d'auteur sur les revues et n'est pas responsable de leur contenu. En règle générale, les droits sont détenus par les éditeurs ou les détenteurs de droits externes. [Voir Informations légales.](#)

Terms of use

The ETH Library is the provider of the digitised journals. It does not own any copyrights to the journals and is not responsible for their content. The rights usually lie with the publishers or the external rights holders. [See Legal notice.](#)

Download PDF: 14.03.2025

ETH-Bibliothek Zürich, E-Periodica, <https://www.e-periodica.ch>

ROMAINMÔTIER – A HAVEN FOR ARTISTS IN THE SWISS JURA MOUNTAINS

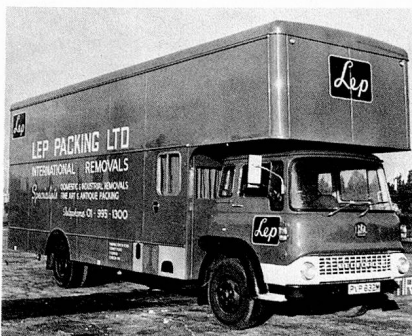
A vision out of the Middle Ages, Romainmôtier is tucked into a small valley in the Jura mountains. The hurried travellers, the passengers of express trains, whiz through its tiny railway station unsuspecting. As if time had stood still, Romainmôtier has remained an island of peace and tranquility, welcoming the visitor with a penchant for contemplation.

More than fifteen hundred years ago, St. Romanus and his companions had come to Romainmôtier, fighting their way through vast jungle-like thickets and woods. They had cleared the site to build

what is now the oldest monastery in Switzerland. Around its Romanesque church, erected around the year one thousand, the monastery and the little community prospered. The abbey was handed over to the monks of Cluny in the Xth century and it controlled seven priories, 20 parish churches, 30 villages and 50 fiefs. In 1536, the year of the Reformation, the high bailiffs of Berne came to take over the monastery. The buildings were used for rather worldly purposes: the church became in turn a cave and a granary. Deprived of its centre, the

little town began to crumble and the buildings fell into neglect.

But today, Romainmôtier is full of life again. The church has been restored, mass is read or concerts are given. The Priory has also been saved from decay and may be rented for festive occasions. But the particular charm comes from the people who have fallen under the spell of this medieval site. Painters, potters, weavers and wood carvers have come here to stay and perpetuate the spirit of St. Romanus in new and creative ways.



TRAVEL WEEKLY TO AND FROM SWITZERLAND AND ENGLAND

Providing DOOR TO DOOR SERVICES
with vans specially equipped to carry

- HOUSEHOLD REMOVALS
- EXHIBITION GOODS
- WORKS OF ART – MACHINERY

For full information contact:—

LEP PACKING LTD., CORNEY ROAD, CHISWICK, LONDON W4
TEL: 01-995 1300 (Ext. 110) TELEX: 23944