

**Zeitschrift:** The Swiss observer : the journal of the Federation of Swiss Societies in the UK

**Herausgeber:** Federation of Swiss Societies in the United Kingdom

**Band:** - (1980)

**Heft:** 1761

**Rubrik:** Birthdays and anniversaries

### **Nutzungsbedingungen**

Die ETH-Bibliothek ist die Anbieterin der digitalisierten Zeitschriften. Sie besitzt keine Urheberrechte an den Zeitschriften und ist nicht verantwortlich für deren Inhalte. Die Rechte liegen in der Regel bei den Herausgebern beziehungsweise den externen Rechteinhabern. [Siehe Rechtliche Hinweise.](#)

### **Conditions d'utilisation**

L'ETH Library est le fournisseur des revues numérisées. Elle ne détient aucun droit d'auteur sur les revues et n'est pas responsable de leur contenu. En règle générale, les droits sont détenus par les éditeurs ou les détenteurs de droits externes. [Voir Informations légales.](#)

### **Terms of use**

The ETH Library is the provider of the digitised journals. It does not own any copyrights to the journals and is not responsible for their content. The rights usually lie with the publishers or the external rights holders. [See Legal notice.](#)

**Download PDF:** 02.04.2025

**ETH-Bibliothek Zürich, E-Periodica, <https://www.e-periodica.ch>**

## THE SOUTHERN AREA SWISS CLUB

We are delighted to have been given space in the *Swiss Observer*, especially as we are still very young and small. We were "born" rather unexpectedly on 10th November, 1978, and our number has increased from nine Swiss ladies to over 30 Swiss names on the mailing list. Due to long distances we have not yet had the chance to personally meet everyone. There is still much room for growth and development.

We meet on the first Friday of every month in the Club Room of Oak Farm Centre in Farnborough, which is a central, comfortable and convenient place. Our grandest occasion so far has been the visit of Dr. Peter Schweizer, Legal and Press Attaché from the Swiss Embassy. His visit on Friday, 1st June was greatly appreciated by us

all and he gave us a most informative and lively talk on the duties and the rights of the Swiss abroad. Did you know there are 8,000 Swiss of dual nationality in Britain, and 6,000 of Swiss nationality? Some of that number must be in our area and we hope to hear from you. Should you live too far to come for an evening meeting one of us could put you up for the night.

Our next big event was the 1st August celebrations and barbeque at one of our members homes in Farnham.

A.D.

Please contact either our chairman Mrs. Anne Doy, 8 James Way, Camberley, Surrey (telephone Camberley 64208) or our secretary Mrs. Verena Rudkin, 1 Chiltern Avenue, Farnborough, Hants (telephone Farnborough 47948) for further information.

## BIRTHDAYS AND ANNIVERSARIES

Mr. Willy Renz will be 81 on 2nd January, on the same day as Mr. Carl Nater (St. Moritz) celebrates his 71st birthday. Mr. E. P. Locher will be 86 on 4th January and Mrs. L. Mechr will have her birthday on 12th January.

Mrs. Dorothy Keller, Dr. E. Thalmann and Mr. J. P. Christen (Basle) all have their birthdays on 14th January.

The 16th January is Consul J. Keller's birthday and Mr. John M. Badel will be 66 on the same day. Mrs. J. Weist will be 84 on 29th January.

The following couples will celebrate their wedding anniversary: Mr. and Mrs. T. Haller their 37th on 9th January, Mr. and Mrs. E. Thalmann their 37th on 23rd January and Mr. and Mrs. G. Eusebio their 40th on 27th January.

Congratulations and very best wishes to all these readers and any others who have a special reason for celebrating in January.



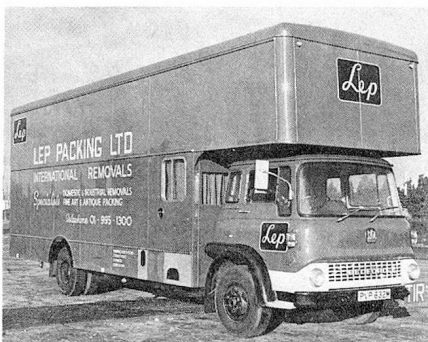
Mrs. Anne Doy and Dr. P. Schweizer.

For Information, Advice or Help contact the

### SWISS WELFARE OFFICE for young people

31 Conway Street London W1P 5HL  
telephone 01-387 3608

Underground Stations:  
Great Portland Street  
Warren Street



### TRAVEL WEEKLY TO AND FROM SWITZERLAND AND ENGLAND

Providing DOOR TO DOOR SERVICES  
with vans specially equipped to carry

- HOUSEHOLD REMOVALS
- EXHIBITION GOODS
- WORKS OF ART - MACHINERY

For full information contact:-

LEP PACKING LTD., CORNEY ROAD, CHISWICK, LONDON W4  
TEL: 01-995 1300 (Ext. 110) TELEX: 23944