

Zeitschrift: The Swiss observer : the journal of the Federation of Swiss Societies in the UK
Herausgeber: Federation of Swiss Societies in the United Kingdom
Band: - (1980)
Heft: 1767

Inhaltsverzeichnis

Nutzungsbedingungen

Die ETH-Bibliothek ist die Anbieterin der digitalisierten Zeitschriften. Sie besitzt keine Urheberrechte an den Zeitschriften und ist nicht verantwortlich für deren Inhalte. Die Rechte liegen in der Regel bei den Herausgebern beziehungsweise den externen Rechteinhabern. [Siehe Rechtliche Hinweise.](#)

Conditions d'utilisation

L'ETH Library est le fournisseur des revues numérisées. Elle ne détient aucun droit d'auteur sur les revues et n'est pas responsable de leur contenu. En règle générale, les droits sont détenus par les éditeurs ou les détenteurs de droits externes. [Voir Informations légales.](#)

Terms of use

The ETH Library is the provider of the digitised journals. It does not own any copyrights to the journals and is not responsible for their content. The rights usually lie with the publishers or the external rights holders. [See Legal notice.](#)

Download PDF: 13.03.2025

ETH-Bibliothek Zürich, E-Periodica, <https://www.e-periodica.ch>

Inside this issue . . .



Raclette's lofty home

Page 37



The journal of the Federation of Swiss Societies in the UK

Managing Editor: Derek Meakin
London Editor: Marianne Hill-Moser
Advertisement Manager: John Riding

Published by: Europress Ltd
Europa House
68 Chester Road
Hazel Grove
Stockport SK7 5NY

Tel: 061-456 8383 (Administration)
Tel: 061-456 8500 (Advertising)

Annual subscription rate:
£5.30 (United Kingdom)
Sfr. 25 (Switzerland)

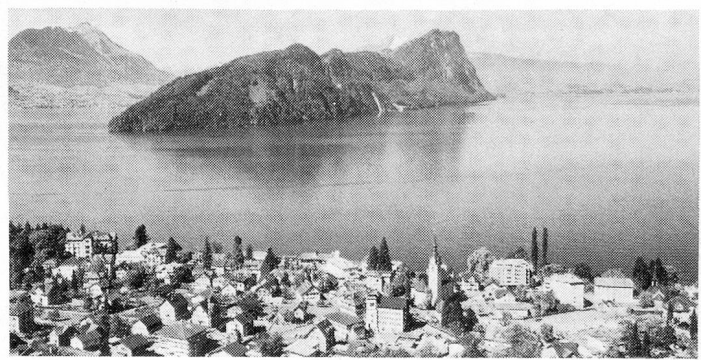
Founded in 1919 by Paul F. Boehringer

Consultative committee: Bernard Simon (chairman), Oscar F. Boehringer, Albert Kunz, Dr Alex Lang, Mrs Mariann Meier, Derek Meakin and the press attaché at the Swiss Embassy.

COVER PICTURE: Chillon castle, Lake Geneva. Back cover: scenes from the Valais, Geneva and the Grisons.

A man and his lake

Page 9



Society and Social Scene.. Pages 11, 13
Your Letters Pages 15, 17
Swiss Holiday Scene Pages 35-38
The Arts Page 39

Economic World Pages 41, 43
Helvetische Spalte Page 45
Rubrique Romande Page 46
Notiziario Bicantonale Page 47

CENTRE PAGES: Quarterly Review of news from Berne

The international bank for discerning people



Swiss Bank Corporation

Schweizerischer Bankverein
Soci t  de Banque Suisse
Societ  di Banca Svizzera

(A company limited by shares, incorporated in Switzerland)

City Office
99 GRESHAM Street,
P.O. Box no. 114,
LONDON EC2P 2BR
Tel. 01-606 4000

West End Branch
SWISS CENTRE,
1 NEW COVENTRY STREET,
LONDON W1V 8BR
Tel. 01-734 0767

Representative Office for Scotland
66 HANOVER STREET,
EDINBURGH EH2 1HH
Tel. 031-225 9186/7

Over 180 offices throughout Switzerland. Branches in London, New York, Atlanta, Chicago, San Francisco, Hong Kong, Singapore, Tokyo and Bahrain. Subsidiaries, affiliated companies and representatives in Beirut, Bogota, Buenos Aires, Cairo, Caracas, Edinburgh, Grand Cayman (B.W.I.), Guayaquil, Hong Kong, Houston, Johannesburg, Lima, London, Los Angeles, Luxembourg, Madrid, Melbourne, Mexico, Monte-Carlo, Montreal, Nassau (Bahamas), New York, Panama, Paris, Rio de Janeiro, S o Paulo, Singapore, Sydney, Tehran and Toronto.