

**Zeitschrift:** Swiss express : the Swiss Railways Society journal  
**Herausgeber:** Swiss Railways Society  
**Band:** 3 (1991-1993)  
**Heft:** 6

**Artikel:** Somvix : HOm gauge  
**Autor:** Ramsay, P.  
**DOI:** <https://doi.org/10.5169/seals-855199>

### **Nutzungsbedingungen**

Die ETH-Bibliothek ist die Anbieterin der digitalisierten Zeitschriften. Sie besitzt keine Urheberrechte an den Zeitschriften und ist nicht verantwortlich für deren Inhalte. Die Rechte liegen in der Regel bei den Herausgebern beziehungsweise den externen Rechteinhabern. [Siehe Rechtliche Hinweise.](#)

### **Conditions d'utilisation**

L'ETH Library est le fournisseur des revues numérisées. Elle ne détient aucun droit d'auteur sur les revues et n'est pas responsable de leur contenu. En règle générale, les droits sont détenus par les éditeurs ou les détenteurs de droits externes. [Voir Informations légales.](#)

### **Terms of use**

The ETH Library is the provider of the digitised journals. It does not own any copyrights to the journals and is not responsible for their content. The rights usually lie with the publishers or the external rights holders. [See Legal notice.](#)

**Download PDF:** 01.04.2025

**ETH-Bibliothek Zürich, E-Periodica, <https://www.e-periodica.ch>**



Somvix station with Ge6/6" approaching.

## Somvix

*H0m Gauge*

by P Ramsay

*All photograph by the author*

**My layout** was built primarily as a small workshop/test layout, although it has been on show at a local exhibition.

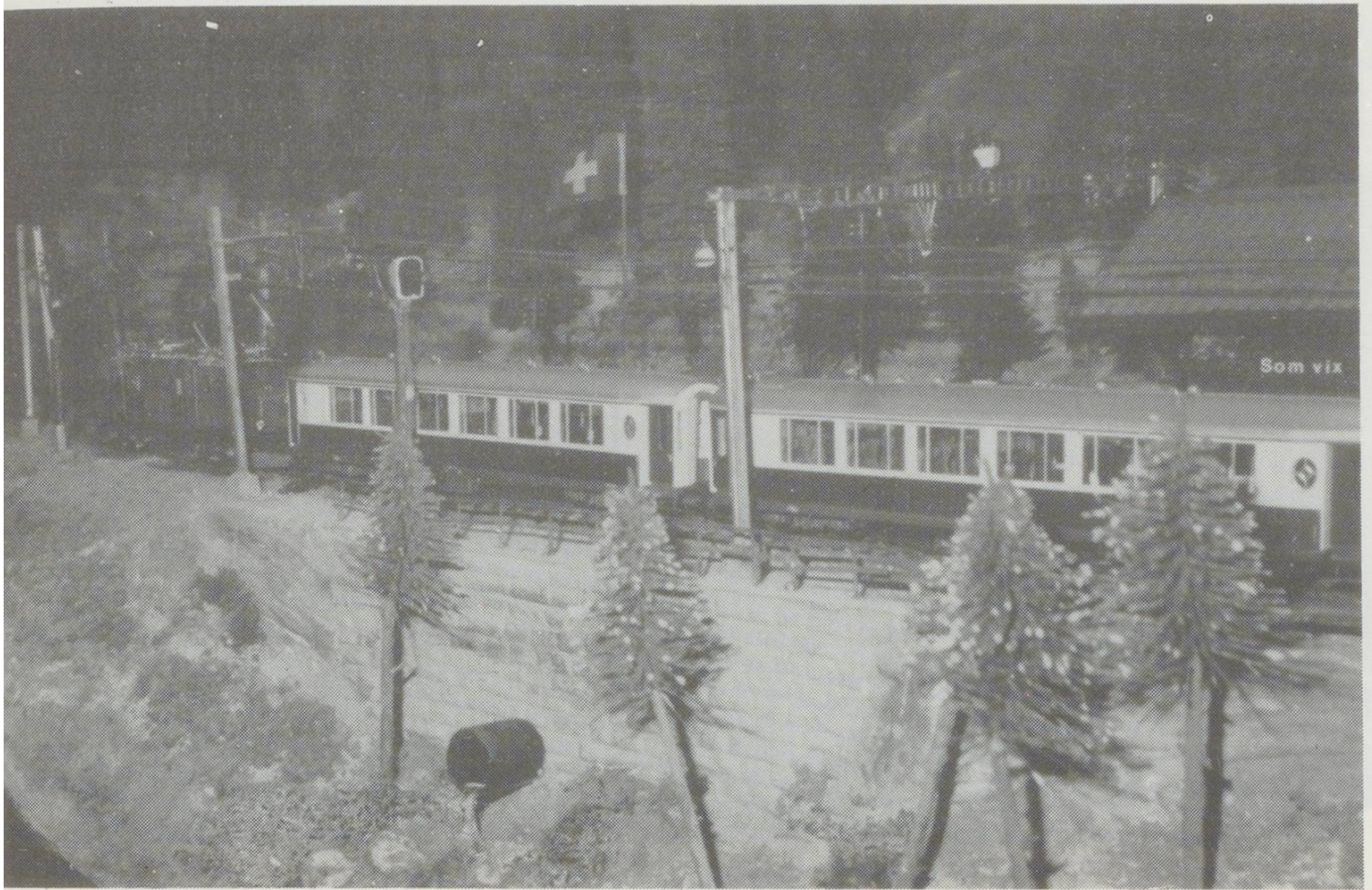
It features a small passing loop station, flanked by mountainous scenery, with a pair of tunnels leading to a rear storage area. The baseboard is built of plywood on the open top principle, contours are formed from chicken wire and covered in papier mache, then plastered with a grout/cork mix.

Scenic treatment follows conventional techniques, tunnel portals, buttresses and retaining walls are adapted Sopa products. The many trees planted in the landscape come from the Faller and K&M ranges, but have been modified and detailed.

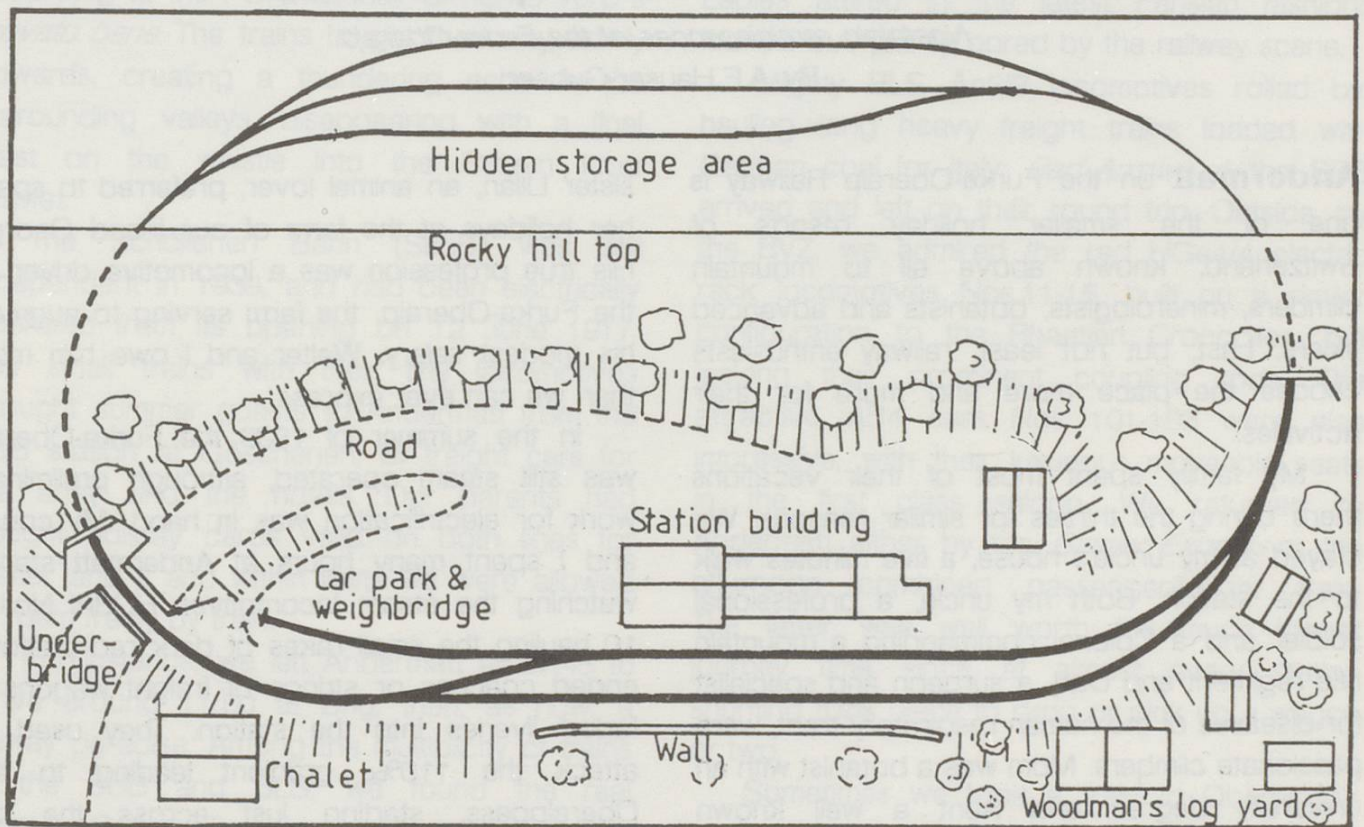
Trackwork is Bemo finescale, PVA ballasted with hand operated turnouts controlled by wire rods and bell cranks from under the baseboard. A pair of BW signals are linked to route settings. The locomotives are fed from energised Sommerfeld catenary.

The tiny station building, Somvix, was scratchbuilt in plywood and plastic sheet and was based on a drawing in the invaluable Schweers and Wall planbook.

The freestanding layout was finally completed with a mountainous Kibri backscene and the end product is a mini slice of Graubunden..



"Baby Krok" Ge6/6' heads a train of ex-MOB saloon cars out of Somvix



Plan of Somvix : Not to scale