

**Zeitschrift:** Swiss express : the Swiss Railways Society journal  
**Herausgeber:** Swiss Railways Society  
**Band:** 3 (1991-1993)  
**Heft:** 8

**Rubrik:** Trade news

### **Nutzungsbedingungen**

Die ETH-Bibliothek ist die Anbieterin der digitalisierten Zeitschriften. Sie besitzt keine Urheberrechte an den Zeitschriften und ist nicht verantwortlich für deren Inhalte. Die Rechte liegen in der Regel bei den Herausgebern beziehungsweise den externen Rechteinhabern. [Siehe Rechtliche Hinweise.](#)

### **Conditions d'utilisation**

L'ETH Library est le fournisseur des revues numérisées. Elle ne détient aucun droit d'auteur sur les revues et n'est pas responsable de leur contenu. En règle générale, les droits sont détenus par les éditeurs ou les détenteurs de droits externes. [Voir Informations légales.](#)

### **Terms of use**

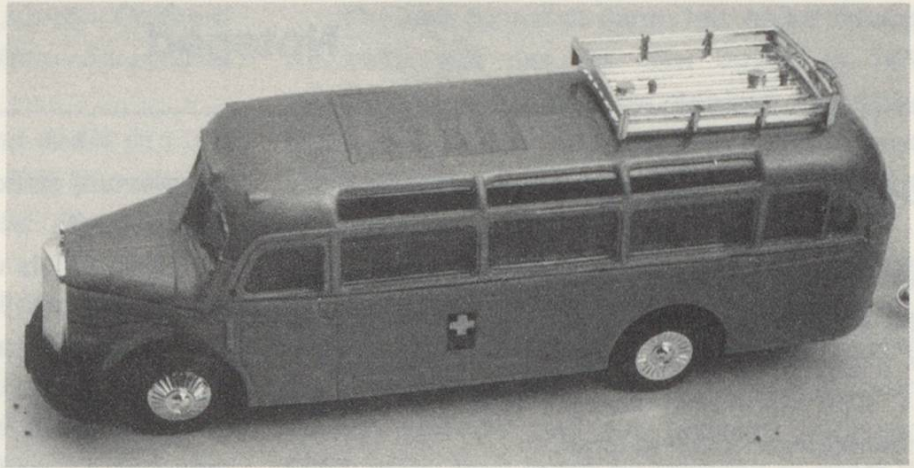
The ETH Library is the provider of the digitised journals. It does not own any copyrights to the journals and is not responsible for their content. The rights usually lie with the publishers or the external rights holders. [See Legal notice.](#)

**Download PDF:** 14.03.2025

**ETH-Bibliothek Zürich, E-Periodica, <https://www.e-periodica.ch>**

## Trade News

**Bachmann Industries Europe Ltd**, Moat Way, Barwell, Leices LE9 8EY (phone 0455 841756/7 fax 0455 841787) are now importing a number of ranges of HO scale road vehicles, which will be of considerable interest to



modelling members. One such model is the Praline Mercedes Benz bus in PTT livery, illustrated alongside. This is a pleasing model of an older vehicle which is only slightly marred by the absence of any indication where and how to fit the various fittings provided on sprues. These, and the roof rack, ladder and wheel trim are brightly chrome plated and require a little paint to give the correct impression.

Bachmann Europe also inform us that they have acquired the goodwill and, more important, the tooling from Liliput. Tools are now in the Far East and production should be underway by the time you receive this issue.-

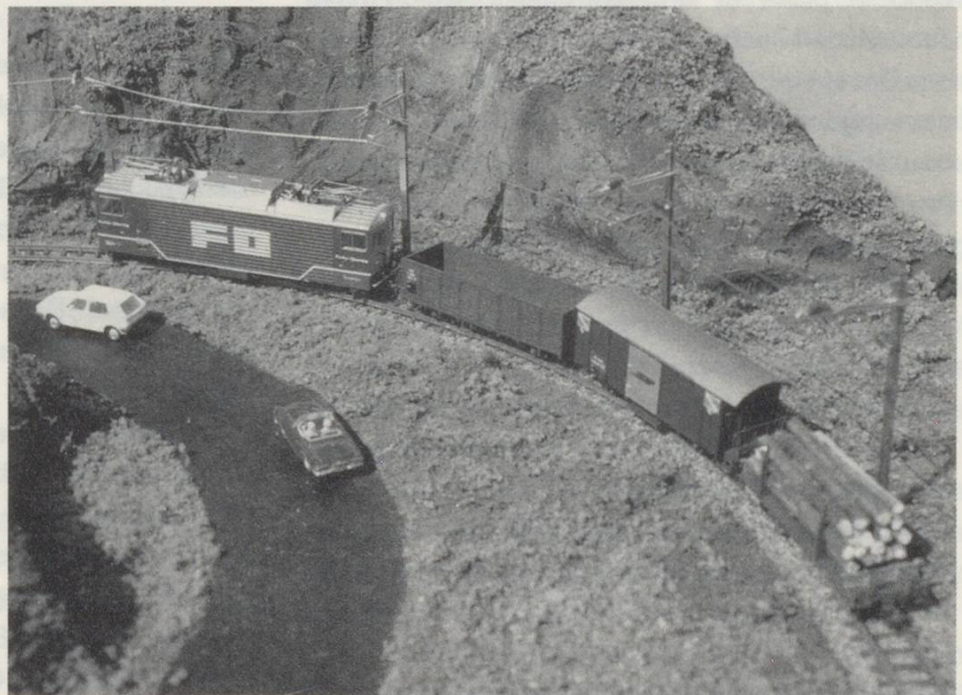
**Winco**, 149 Arelford Road, Winchester, Hampshire SO23 8JZ have started a 'Club' for Bemo users and for an annual subscription of £6 will supply all copies of the Bemo Magazine and newsletters describing new products as they become available, etc. They carry a large range of Continental imports and can supply by mail order, all major credit cards being accepted. They can be contacted on 0962 869301, phone or fax.

*Please mention Swiss Express when contacting the Trade*

## For Sale

HOm Furka Oberalp based portable layout. 1220mm x 850mm base-board on folding legs. Continuous run with siding in station at the front of the layout and 'hidden' siding at the rear. Bemo track with electrically operated points and Sommerfeldt catenary. Scenery includes hillsides, rockfaces, road, trees, chelet and station building. Layout less than one year old. Reason for sale - to make room for next project.

Price of £150 to include delivery in London area.



Please telephone Peter Marriott on 081 368 6473 for more details..