

**Zeitschrift:** Swiss express : the Swiss Railways Society journal  
**Herausgeber:** Swiss Railways Society  
**Band:** 4 (1994-1996)  
**Heft:** 10

**Artikel:** The Spinx - highest building site in Europe!  
**Autor:** [s.n.]  
**DOI:** <https://doi.org/10.5169/seals-855089>

### **Nutzungsbedingungen**

Die ETH-Bibliothek ist die Anbieterin der digitalisierten Zeitschriften. Sie besitzt keine Urheberrechte an den Zeitschriften und ist nicht verantwortlich für deren Inhalte. Die Rechte liegen in der Regel bei den Herausgebern beziehungsweise den externen Rechteinhabern. [Siehe Rechtliche Hinweise.](#)

### **Conditions d'utilisation**

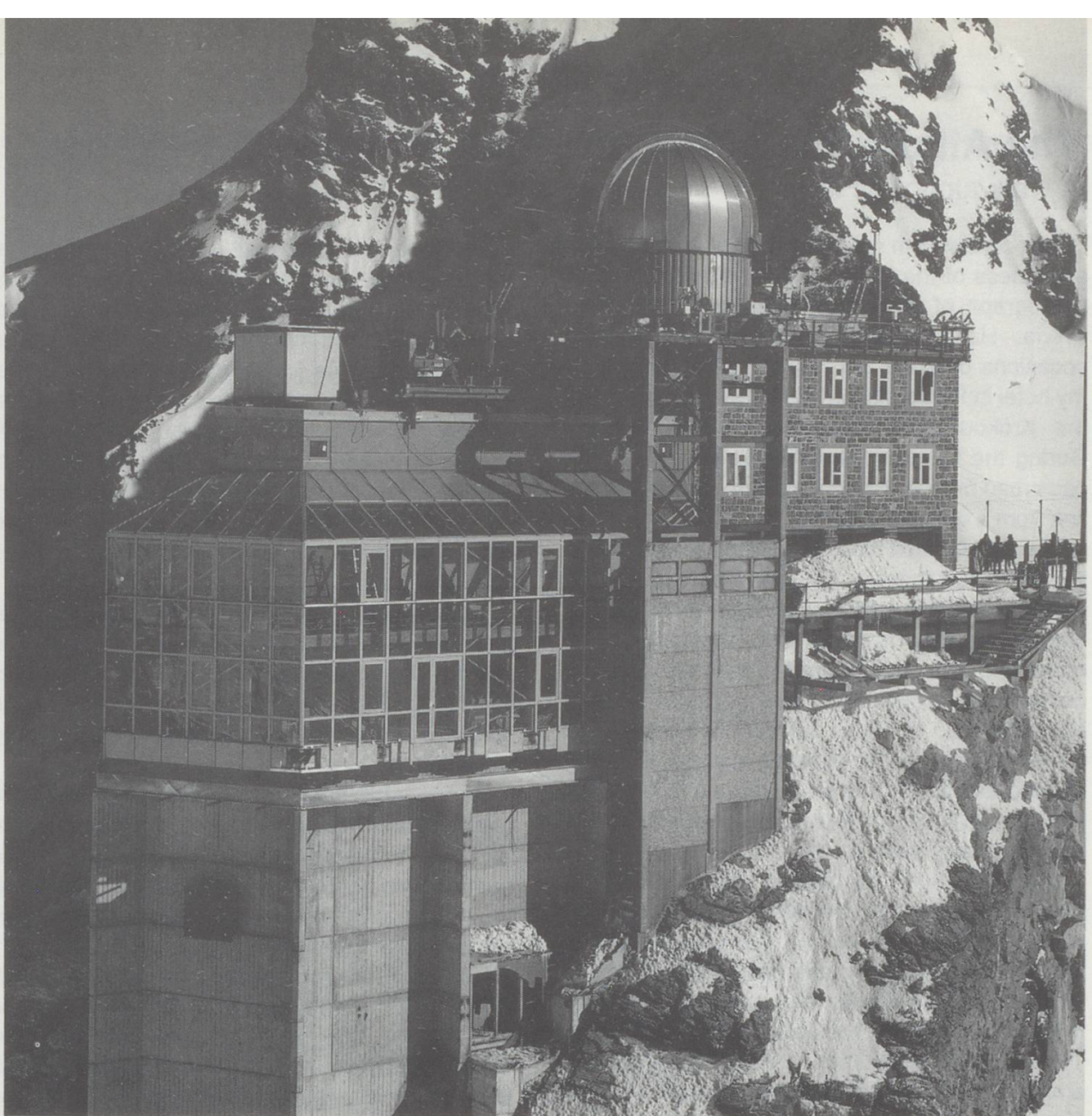
L'ETH Library est le fournisseur des revues numérisées. Elle ne détient aucun droit d'auteur sur les revues et n'est pas responsable de leur contenu. En règle générale, les droits sont détenus par les éditeurs ou les détenteurs de droits externes. [Voir Informations légales.](#)

### **Terms of use**

The ETH Library is the provider of the digitised journals. It does not own any copyrights to the journals and is not responsible for their content. The rights usually lie with the publishers or the external rights holders. [See Legal notice.](#)

**Download PDF:** 15.03.2025

**ETH-Bibliothek Zürich, E-Periodica, <https://www.e-periodica.ch>**



## The Sphinx - highest building site in Europe!

Many of you will have visited the Bernese Oberland and travelled to the Jungfrauoch above Kleine Scheidegg, with spectacular views across the Eiger glacier. In 1930 the International Foundation (first members were Britain, Germany, France, Austria and Switzerland) for High Alpine Research was established, and in 1931 construction work started on the Sphinx Ridge. The Sphinx laboratory was opened in 1937, early research was concentrated on meteorology, glaciology and physiological-medical matters, and in 1950 - with the aid of UNESCO - an astronomical dome was added. The emphasis on research then shifted to astronomy, astro-physics and cosmic radiation. The Laboratory is 100 metres higher than

Jungfrauoch. If, like me you have never waited for the lift to the top of the Sphinx because of the queues, the next time you go this will not be a problem. An expansion scheme which has taken three years to complete, at a cost of SFr. 30 million, will open in June 96. The new covered observation facility is a structure of glass and steel. A high-capacity double elevator will carry up to 1200 people an hour, compared to 240 in the old lift. In addition a footpath is being constructed around the entire building. The new covered terrace will be maintained at only 5° Celsius, with any surplus radiated heat being stored and used for other heating.

The materials for this project have mostly been carried by the Jungfrau railways.