

**Zeitschrift:** Swiss express : the Swiss Railways Society journal  
**Herausgeber:** Swiss Railways Society  
**Band:** 6 (2000-2002)  
**Heft:** 6

## Werbung

### Nutzungsbedingungen

Die ETH-Bibliothek ist die Anbieterin der digitalisierten Zeitschriften. Sie besitzt keine Urheberrechte an den Zeitschriften und ist nicht verantwortlich für deren Inhalte. Die Rechte liegen in der Regel bei den Herausgebern beziehungsweise den externen Rechteinhabern. [Siehe Rechtliche Hinweise.](#)

### Conditions d'utilisation

L'ETH Library est le fournisseur des revues numérisées. Elle ne détient aucun droit d'auteur sur les revues et n'est pas responsable de leur contenu. En règle générale, les droits sont détenus par les éditeurs ou les détenteurs de droits externes. [Voir Informations légales.](#)

### Terms of use

The ETH Library is the provider of the digitised journals. It does not own any copyrights to the journals and is not responsible for their content. The rights usually lie with the publishers or the external rights holders. [See Legal notice.](#)

**Download PDF:** 02.04.2025

**ETH-Bibliothek Zürich, E-Periodica, <https://www.e-periodica.ch>**

# **WINCO** *The* *Home of European* *Model Railways*

**Our phone no. is (0)1962 869301 and we are normally available Monday to Saturday, 10.00 am-9.00 pm. Our fax line (0)1962 878788 is open 24 hours a day.**

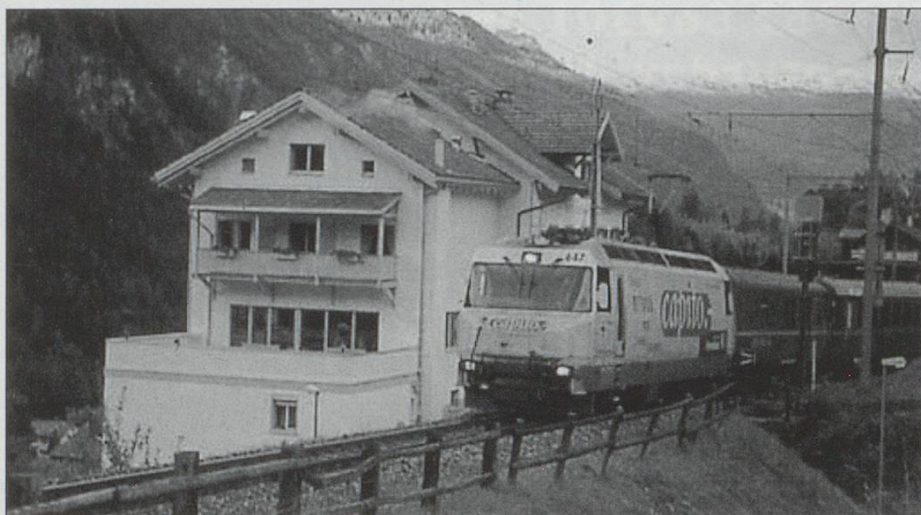


**Formed over 16 years ago specifically to supply those continental models seen abroad but unavailable in the UK. The company has gone from strength to strength and the husband and wife team now import direct from the world's leading model railways with names such as BEMO/HAG/MARKLIN/TRIX/LEMACO/D&R/FULGUREX/LIMA/RIETZE/KIBRI/VOLLMER/KLEIN Modellbahn/ROCO/BRAWA/FALLER/POLA/PREISER/BUSCH/WIKING/LILIPUT/NAROBahn/M&D/ARNOLD/RIVAROSSA/STANGL/SOMMERFELDT and GERARD.**

# Hotel Restaurant Grischuna

Filisur  
Graubünden  
SWITZERLAND

Familie R. + A. Uffer Phone (from U.K.) 00 41 81 4041180  
CH - 7477 Filisur/GR Fax (from U.K.) 00 41 81 4042480  
E-mail <http://www.grischuna-filisur.ch> Internet: [www.grischuna-filisur.ch](http://www.grischuna-filisur.ch)



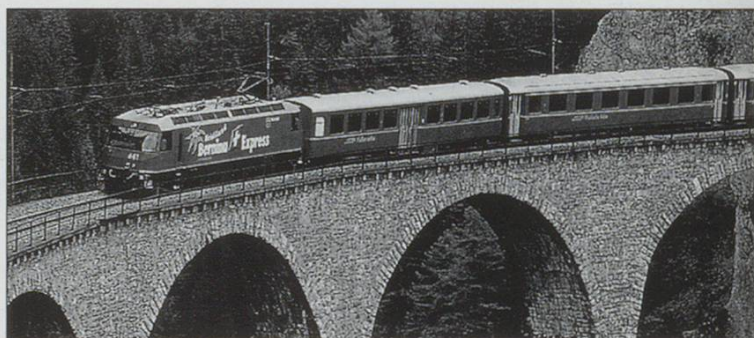
Peaceful and sunny, directly opposite the station (Bernina, Heidiland and Glacier express stop here!)

- ★ Comfortable rooms all with toilet, bath/shower, radio and TV. Some with balconies overlooking the Albula valley and famous railway.
- ★ Excellent meals at reasonable prizes in our new panoramic restaurant.
- ★ English Spoken

Special summer and winter arrangements, also in conjunction with all "Rhätische Bahn" activities!  
**ASK FOR OUR LEAFLET!**

Only fifteen minutes walk to the world-famous Landwasser Viaduct!

*Grüezi und herzlich willkommen*



## SPECIAL OFFER

All in prices this winter:

**One week (seven nights): Bed, Breakfast and 4 course evening meal from £230.00\***

**As above but with season ticket on the Rhätische Bahn £290.00\***

\*Current exchange rate