

Zeitschrift: Swiss express : the Swiss Railways Society journal
Herausgeber: Swiss Railways Society
Band: - (2009)
Heft: 99

Rubrik: Photo gallery

Nutzungsbedingungen

Die ETH-Bibliothek ist die Anbieterin der digitalisierten Zeitschriften. Sie besitzt keine Urheberrechte an den Zeitschriften und ist nicht verantwortlich für deren Inhalte. Die Rechte liegen in der Regel bei den Herausgebern beziehungsweise den externen Rechteinhabern. [Siehe Rechtliche Hinweise.](#)

Conditions d'utilisation

L'ETH Library est le fournisseur des revues numérisées. Elle ne détient aucun droit d'auteur sur les revues et n'est pas responsable de leur contenu. En règle générale, les droits sont détenus par les éditeurs ou les détenteurs de droits externes. [Voir Informations légales.](#)

Terms of use

The ETH Library is the provider of the digitised journals. It does not own any copyrights to the journals and is not responsible for their content. The rights usually lie with the publishers or the external rights holders. [See Legal notice.](#)

Download PDF: 02.04.2025

ETH-Bibliothek Zürich, E-Periodica, <https://www.e-periodica.ch>

PHOTO GALLERY



"Please stay at home unless your journey is absolutely necessary" - obviously doesn't apply in Wengen!

PHOTO: Stuart Cooke.

ICN 500018 running wrong line with the 16.03 Basel – Lugano at Flüelen on 7/5/09.

PHOTO: David Adams.



PHOTO GALLERY



New BLS Lötschbergers at Brig.

PHOTO: Anthony Warrener.

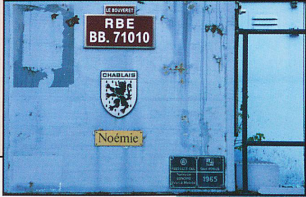
SOB Loco 446 015-0 in their Samstagern workshop.

PHOTO: Courtesy SOB.





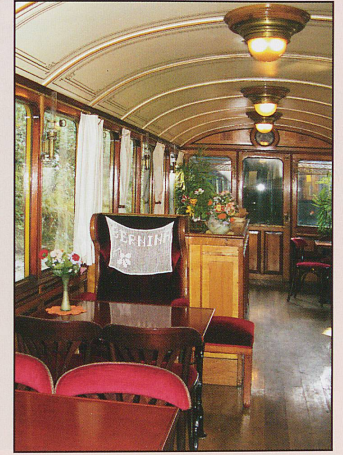
Cablecar ascends to Pilatus from Fräküntess. PHOTO: Phil Weaver.



BB71010 stabled in a disused siding at Flüelen on 7/5/09. Obviously of French origin, it was used by the Rive-Bleu Express (RBE) between Le Bouveret and Evians when steam traction could not be justified. PHOTO: David Adams.



CGN "Simplon" heads across Lac Lemman from Nyon, 24/06/09. An almost perfect Swiss Flag this time. PHOTO: David Stevenson.



1903 As 2 RhB Bernina Line Salon Bar on the Blonay-Chamby. PHOTO: Peter Allman.

At MuttENZ on 8/5/09, Ae6/6 11405, the oldest still in traffic and in exceptional condition, stabled with 5 other operational members of the class. PHOTO: David Adams.



PHOTO GALLERY



Preserved Ae 3/3 No 10664 has been moved from its normal storage until August 2009 whilst SBB renew the roof and is stored at Wetzikon in the meantime. PHOTO: Reto Trittbach.

Köln based HGK's 185589 on west bound fuel tanks at Killwangen-S on 8/5/09.

PHOTO: David Adams.



PHOTO GALLERY



Deh4/4II 93 nearing the Reuss Bridge at Göschenen with the 13.28 from Andermatt.

PHOTO: David Adams.

The latest 460 livery - 460099 at Luzern with matching exhibition train, 3 coaches and a steuerwagen (DVT) on 6/5/09 .

PHOTO: David Adams.

