

**Zeitschrift:** Trans : Publikationsreihe des Fachvereins der Studierenden am  
Departement Architektur der ETH Zürich

**Herausgeber:** Departement Architektur der ETH Zürich

**Band:** - (2021)

**Heft:** 38

**Rubrik:** The glossary project

### **Nutzungsbedingungen**

Die ETH-Bibliothek ist die Anbieterin der digitalisierten Zeitschriften. Sie besitzt keine Urheberrechte an den Zeitschriften und ist nicht verantwortlich für deren Inhalte. Die Rechte liegen in der Regel bei den Herausgebern beziehungsweise den externen Rechteinhabern. [Siehe Rechtliche Hinweise.](#)

### **Conditions d'utilisation**

L'ETH Library est le fournisseur des revues numérisées. Elle ne détient aucun droit d'auteur sur les revues et n'est pas responsable de leur contenu. En règle générale, les droits sont détenus par les éditeurs ou les détenteurs de droits externes. [Voir Informations légales.](#)

### **Terms of use**

The ETH Library is the provider of the digitised journals. It does not own any copyrights to the journals and is not responsible for their content. The rights usually lie with the publishers or the external rights holders. [See Legal notice.](#)

**Download PDF:** 03.04.2025

**ETH-Bibliothek Zürich, E-Periodica, <https://www.e-periodica.ch>**

The Glossary Project aims to give an introduction to all the basic governance structures of the Department of Architecture at ETH Zurich and serves as a tool with which students can begin to actively shape the institution for themselves. It is divided roughly into 5 areas: Department, Institution, People, Associations and Infrastructure.

# THE GLOSSARY PROJECT

**Linda Dannesboe Sjøqvist**, born in 1995, completed her BSc degree in Architecture at ETH Zurich in summer 2019. She did a one-year internship at NORD architects and BIG in Copenhagen. In September 2020, she started the MSc degree course in Architecture at ETH Zurich. She is a member of the Parity Group and a student representative on the Parity and Diversity Commission.

**Gabriel Eggenschwyler**, born 1997, is pursuing his Bachelor's (BSc) degree in Architecture at ETH Zurich. He is currently engaged in Hochschulpolitik in the board of the student association architektura.

**Martina Hügli**, born in 1999, is currently pursuing her BSc degree in Architecture at ETH Zurich. She engages in Hochschulpolitik in the board of architektura and is a member of the Parity Group.

**Amy Perkins**, born in 1988, studied architecture at Cambridge University and London Metropolitan University. After graduating in 2013 she worked for Caruso St John architects in London, was a founding member of Assemble and taught at Cambridge University. She has been teaching at ETH Zurich with the chair of Tom Emerson since Spring Semester 2018. She is currently a member of the Parity Group and sits as the AAA representative on the Parity and Diversity Commission.

**Emanuel Pulfer**, born in 1999, is currently halfway through his architecture studies at ETH Zurich, where he is also engaged in Hochschulpolitik as part of the board of the student association architektura.

**Nicolas Wild**, born in 1992, completed his BSc degree in Architecture in 2018 and is soon to finish the MSc in Integrated Building Systems. He was President of architektura in 2017 and has been a member of the UK and DK since 2016. During the past five years, he was involved in several teaching-related initiatives, such as the evaluation and adaptation of the MSc curriculum 2017, the revision of the Master's thesis and the introduction of the Fachsemester (subject semester). Due to his long-term involvement, he is sometimes referred to as a «walking D-ARCH encyclopedia».

trans magazin, the team for trans magazin issue #38. Reproduction, were Ella Eßlinger, Noé Lafranchi, Blanka Dominika Major and Jeremy Waterfield.

# DEPARTMENT

## Executive Board

The Executive Board of the Department of Architecture (D-ARCH) is responsible for the operational management of the general departmental tasks in the areas of teaching, research, planning, coordination, and support. It consists of: Dean, Vice Dean, Director of Studies, Director of Research. (Geschäftsordnung Art. 33, 34, 35)

## Departementsausschuss (DA)

The Department Committee (DA) advises on the day-to-day business of the department and helps prepare the decisions to be taken at the Department Conference. It is comparable to an extended executive board, in which many strategic questions as well as financial and professorial planning are discussed. The committee only has an advisory role and is composed of nine professors as well as joint representation of mid-level faculty, and students. In Spring Semester (FS) 2014, the Dean of the Department, Hubert Klumpner, gave the students their own seat, meaning that architecture and the AAA now each have a seat. In Autumn Semester (HS) 2017, the then Dean, Philip Ursprung, decided that the DA should only be convened when necessary – no longer twice per semester. At that time, it was clearly stated by the head of the department that any topic can be discussed in the DA if the advisory function of the committee is required. The architecture and the AAA were advised that they can also convene a DA. The content of all DA meetings are confidential, which must be taken into account when reporting back to students or colleagues in the architecture or AAA. Exceptions can be made if discussions amongst students are required on specific issues. (Geschäftsordnung Art. 15, Art. 16, Art. 17)

## Geschäftsordnung des Departements Architektur

The «Geschäftsordnung» of the Department of Architecture is the totality of all legal guidelines and rules of the department. A current version can be found on the department's website <https://rechtsammlung.sp.ethz.ch/Dokumente/320.12.pdf>

## Strategy Paper D-ARCH 2021–2024

The Strategy Paper was written by Dean Christophe Giroit in December 2019 and states the general direction of developments at the department. As written in the paper, «design excellence through studio has always been and remains at the core of the department's competence.» Further, «in order to ensure that the D-ARCH remains a major academic actor worldwide for its transdisciplinary research and teaching in design», the paper sets up the following thematic fields, where the development of the department will focus on:

- Architecture, Care and Public Health
  - Digital Data Science: Computational Design, Augmented Reality, Visualizing and Modelling
  - Environmental Responsiveness and Extreme Environments
  - Advanced Materials in Architectural Manufacturing: Digital Fabrication and Building Technologies.
- Generally, it aims for a more research-based studio teaching. As an important annex to the paper, it lists the professorships becoming vacant due to retirements in the period 2021–2024.

## Departmentskonferenz (DK)

The Department Conference (DK) is the highest legislative body of the department, comparable to a parliament. It has extensive competencies in voting for or against proposals from the advisory bodies (e.g. the UK or DA). It also confirms, among other things, that a new teaching assignment has been approved to begin, or changes to be made to the study regulations. The DK consists of all full and associate professors (50%, approximately 44 seats), representatives of the assistants elected by the AAA (25%, usually 22 seats) and an equal number of student representatives, the final 25%. The Department of Architecture is the department with the highest participation of students and assistants in decision making structural organs at ETH Zurich. This distribution creates an extremely interesting dynamic during the departmental conferences, since students and assistants have a very high number of votes. An active discourse between the various stakeholders is enabled and most initiatives are accepted only after a common consensus has been reached. Experience has shown that discourse at a more balanced level has a very positive influence on the business of the DK and leads to a large number of student initiatives. The discourse promotes the self-reflection of the departments and the questioning of teaching concepts and existing methods and curricula. (Geschäftsordnung Art. 9, Art. 10, Art. 11)

## Putting a Motion in the DK

Putting a motion in the DK usually involves a long process of evaluation and formulation, often lasting longer than a year. Usually, motions by students are first discussed within the UK if they are related to teaching. It is highly advised that motions are discussed thoroughly before being brought to the DK, as the risk of them being denied can be diminished drastically by bringing AAA or professors on board prior to a vote. Theoretically it is possible to put forward any motions in a DK without them being discussed for a year beforehand, the proposed motion must be sent electronically to the Dean's Office 15 days prior to the DK in order to be on the agenda.

## Professorenkonferenz (PK)

The Professors' Conference (PK) or Professorial Retreat is a confidential meeting of professors where topics concerning the professoriate are discussed. Guests from the student body and «Mittelbau» are only allowed upon request, the protocols are strictly confidential. (Geschäftsordnung Art. 12, Art. 13, Art. 14)

## Berufungskommission

The bodies where new professors for ETH are chosen. Both students and assistants are present, each with the same weight of decision as a professor. They gain access to the highly confidential application documents and participate in the interview process. They therefore have the possibility here to help influence the decision of newly appointed professorships and shape the future direction of teaching at ETH. Students and assistants are put forward for «Berufungskommissionen» via architecture and AAA.

## Unterrichtskommission (UK)

The Teaching Commission (UK) is a consultative body responsible for teaching in the department. It advises on the introduction of new elective courses, the enrollment process for the Master's thesis or the teaching concept for the first-year course. The UK consists of eighteen members, including six professors, six assistants and six students. The

delegates of the students are elected for one year at the general assembly of the architecture. The Teaching Commission submits its consultative reports, statements and proposals to the DK for a decision. The UK meets at least twice a semester, the UK chairman (Director of Studies) or a group of at least one third of the members can arrange extraordinary meetings. (Geschäftsordnung Art. 21, Art. 22, Art. 23)

## Zulassungsausschüsse (ZA)

The «Zulassungsausschuss» (ZA) is a committee regulating the admission to Master's courses. The admissions committee is responsible for assessing the applicants' previous academic qualifications and basic suitability for the corresponding Master's degree programme. The admissions committee for the Master's degree programme in Architecture (ZA Arch) is composed of four design professors. (Geschäftsordnung Art. 27, Art. 28, Art. 29)

## Doktoratsausschuss (DokA)

The «Doktoratsausschuss» (DokA) is similar to the «Zulassungsausschuss» (ZA) but on a doctoral studies level. It is a board of four professors of different institutes. Its responsibilities include: • Admissions for doctoral studies • Reviewing and approving research plans • Drawing up detailed regulations for doctoral studies at the department • Selecting the dissertations proposed for an award within the quota set by the prorektorate.

The members of the board are proposed by the institutes, for a period of two years and are confirmed by the DK. (Geschäftsordnung Art. 30, Art. 31, Art. 32)

## Parity- und Diversity-Kommission (PDK)

Departmental advisory committee consisting of two students, two professors and two «Mittelbau», all with voting rights at the Department Conference. Meeting twice a term the Parity and Diversity Commission (PDK) discusses matters of equity and diversity in the department. Complaints and suggestions can be brought to any member and these will be discussed during their meetings, and if necessary brought to the Department Conference, the Professorial Conference, or the Executive Board. Delegates are selected via the PK, AAA and architecture and have fixed seats at the DK. The PDK maintains a standing agenda item for every DK.

## Notenkonferenz (NK)

At the request of the examiners, the Grading Conference (NK) advises on the assessment of the examinations. One student representative is allowed to attend the NK as an observer. The representative is usually a member of the architecture board. Bound by confidentiality, the representative receives insight into all grades and vouches for the fairness of the conference. All cases of failed exams, that would lead to exclusion, are discussed individually at the NK. Especially close cases, where lifting the grade of one or two exams by 0.25 grades can make a difference, are evaluated on a case by case basis. If only one quarter point is missing in an examination block for passing an examination on the second attempt, the grading conference will discuss the examination performance and include any votes of individual examiners in an overall assessment. If more than one quarter point is missing to pass the examination or if several examination blocks were not passed, no grades will be raised as a matter of principle. There are four NK per year, on results of the following exams: diploma in Architecture in Autumn or Spring Semester; exams in the winter or summer examination session. (Geschäftsordnung Art. 24, Art. 25, Art. 26)

## Arbeitsgruppen (AG)

Working Groups (AG) are usually formed when a precise topic cannot be discussed or formulated during the normal hours of the meeting, usually UK, and separate meetings are required. Normally a smaller group of people takes part in the working groups. They serve as a means to prepare a complex topic before it is discussed again in the UK. Recent examples of an ongoing AG is the proposal for the renewal of the master thesis, where the details are discussed within a smaller group of the UK in an AG.

## Studiensekretariat

Study Administration is the secretariat of the Director of Studies, it is part of the ETH administration and supports the department.

## Dean

The Dean is the head of the department. The term of office is usually two years and successors are designated two years before inauguration. The position's responsibilities include the strategy and development of department and curriculum, holding the chair of the DK and informing the ETH Executive Board of requests, direction and concerns of the department. The Dean has the overall responsibility for the management of resources, professors and staff, teaching and research. (Geschäftsordnung Art. 36, Abs. 1, Abs. 4)

## Dean's Office

The Dean's Office is the secretariat of the Dean, belongs to the administration and works to support the department.

## Vice Dean

The Vice Dean is elected into the executive board with the designation as dean. The Dean may delegate tasks to the Vice Dean within his or her area of responsibility. The Vice Dean is appointed by the President of ETH Zurich at the request of the Department Conference. (Geschäftsordnung Art. 9, Ziff. d)

## Dean Emeritus

The Dean Emeritus traditionally takes part in the Executive Board for a further two years directly after stepping down as dean.

## Departmental Coordinator

The Departmental Coordinator is responsible for the operational management and for administrative planning, coordination, and communication tasks. The responsibility for the Dean's Office and the Informatics Support Group (ISG), rest with the Departmental Coordinator.

## Head of Institute

Each institute of the department has its own Head of Institute, the heads of the institutes are all members of the Department Committee.

## Deputy Head of Institute

The Head of Institute has a Deputy Head of Institute, who steps in in the case of sabbatical or absence.

## Director of Research

The Director of Research is elected in the Department Conference and is a member of the Executive Board. The position is responsible for coordinating and sup-

porting research as well as the promotion of «scientific offspring» (finding and motivating new researchers and scientists).

## Director of Studies

The Director of Studies is elected in the Department Conference and is a member of the Executive Board. They are responsible for all matters concerning current and future teaching and therefore hold the leadership of both the UK and NK. The Master in Integrated Building Systems has a separate position. (Geschäftsordnung Art. 37)

## Professorship

The professors of ETH Zurich are responsible for teaching and research. ETH Zurich distinguishes between temporary Assistant Professorships with and without tenure track as well as Associate Professorships and Full Professorships that are not limited in duration. The retirement usually takes place at the end of the semester during which the Full Professor turns 65. Upon employment, the starting salary of a professor is determined by the ETH Board and ranges between the following minimum and maximum salaries (1 January 2020):

- For full professors between CHF 216,050 and CHF 284,270
- For associate professors between CHF 184,790 and CHF 253,010
- For assistant professors between CHF 153,494 and CHF 221,714.

In order to attract particularly distinguished full professors, the ETH Board can increase the salary in individual cases to a maximum of 115 percent of the maximum salary. ([www.admin.ch/opc/de/classified-compilation/20031273/index.html#a16](http://www.admin.ch/opc/de/classified-compilation/20031273/index.html#a16))

## Associate Professorship

Associate Professors have equal rights, apart from minor aspects not highly relevant within the academic practice. An appointment to associate professor is possible for very young scientists, or in case of a positive decision regarding tenure. The process for promotion to a full professorship can be initiated two years after (and usually not later than six years after) the appointment of an associate professor.

## Assistant Professorship

With the Assistant Professorship ETH Zurich aims to promote the careers of young scientists and give them the opportunity to gain further scientific qualifications with a view towards an academic career. Assistant professors are granted funds for personnel and infrastructure, which allow them to carry out independent research. With the promotion of excellent young scientists' careers in mind, as a general rule, the academic age of assistant professors (accounting for periods of maternity leave, industry experience, military service, etc.) should be 35 years or under at the time of appointment. Assistant professorships come with or without tenure track. Assistant professors' contracts are limited to a maximum of 7 years, the next step from here would usually be associate professor.

## Adjunct Professor

In recognition of outstanding performances in teaching and research, the ETH Board – on a proposal from the President – may award the title of Professor to Senior Scientists of ETH Zurich. In exceptional cases, this honour may also be bestowed upon external persons who have rendered outstanding services to ETH Zurich by means of longstanding, regular teaching accomplishments. As a rule, if no teaching and/or research activity is carried out at ETH Zurich for a period of two years, the title Adjunct Professor may not be continued. Adjunct professors are subordinate to a full or associate professor.

## Visiting Professor / Visiting Lecturer

The different institutes can invite external experts as Visiting Professors and/or Visiting Lecturers for special tasks. This invitation requires the approval of the department's Executive Board (Geschäftsordnung Art. 33) and confirmation by the Department Conference (ibid. Art. 9). There are a total of six visiting professorships at the Institute of Design and Architecture (IEA), these individuals can generally run a design studio at the Department for two years at a time.

## Lecturers

Lecturers other than professors are:

- Private Lecturers: habilitated researchers who have been granted the «venia legendi» (authorisation to teach) by the Rector after completing their habilitation. The «venia legendi» is awarded for 4 years, it can be extended several times for a further 4 years.
- Other lecturers: all other members of the teaching staff (guests, senior scientists, assistants, etc.) who have been granted a teaching assignment. At the Institute for the History and Theory (gta) there is a system of a rotating one-year visiting lecturers.

## Assistants

There are various types of Assistants employed. In general there is a distinction between Senior Assistants aiming at a doctorate and Scientific Assistants. Studio teaching assistants are such scientific assistants. The employment of Senior Assistants is limited to a maximum 12 years on the academic career path:

- Max. 6 years for doctorate + post-doctorate
- Max. 6 years for senior assistants. The employment of Scientific Assistants is limited to maximal 12 years on the projected career track.
- Max. 6 years for scientific assistant
- Max. 6 years for senior scientific assistants. Doctoral students and scientific assistants are paid a fixed-rate salary. At the first level of their career, they receive a fixed starting salary. After one year, this salary is automatically increased in predefined stages for the second year and third year. No further salary increases are specified afterwards.

Salary range:  
• For doctoral students between CHF 47,040 and CHF 50,040- For scientific assistants I (e.g. studio teaching assistants) between CHF 70,300 and CHF 80,320

## Student Employees («Hiwis»)

Paid student jobs are available via professorships, chairs and institutes. Student Employees have a variety of roles and responsibilities, ranging from research, building projects, administration, and organization, to exhibition set-up and invigilation. Application for roles must be conducted directly with the chair or employer, and roles are paid a standard hourly rate of CHF 28 per hour before tax.

## Budget of ETH Zurich

The overarching budget of ETH Zurich is publicly presented in the Annual Report of the ETH. In 2018, the global budget was CHF1,727 Mio. CHF 1,300 Mio. (75%) of the financial contributions are from the federal government CHF 467 Mio. (25%) of it is third-party founding

- In comparison, the operating budget of EPFL amounted in 2019 to CHF1,056 Mio., 686 Mio. (65%) of it being federal contributions

## Budget of the D-ARCH

The Budget of the Department of Architecture is agreed upon annually by the Department/Dean with the ETH Vice President for Finance and Controlling. The full budget is available for inspection only for the members of the Professors' Conference. In 2018, the



funding of the D-ARCH amounted to a total of CHF 57.2 Mio., 42.3 Mio. of it being ETH's Basic Funding. 4.3 Mio. is supplementary ETH funding and 10.5 Mio. is third-party funding. ETH Basic Funding of 39.8 Mio.\* is internally allocated as follows:

- 92.3% (36.7 Mio.) is dedicated to Teaching and Research • IEA ca. 34% (13.5 Mio.) • ITA ca. 17.6% (7 Mio.) • gta ca. 13.3% (5.3 Mio.) • LUS ca. 11.1% (4.4 Mio.) • IDB ca. 3% (1.2 Mio.) • Further ca. 13.2% (5.3 Mio.) of the total are for Teaching Assignments, Visiting Faculty, Material, Internal Project Funding, Coordination, and Bridging Solutions (vacant positions etc.) • 7.7% (3.1 Mio.) is dedicated to Support and Infrastructure • 1.7% (0.7 Mio.) dedicated to RAPLAB • 3.3% (1.3 Mio.) dedicated to IT Support • 2.7% (1.1 Mio.) dedicated to Administrative Support. When compared to the overarching ETH Budget, which amounts in total (with third-party funding) to 1.727 Mio., the D-ARCH (57.2 Mio.) accounts for 3.3%. (2018). In comparison, the total budget of the Academy of Architecture, Mendrisio (AAM) in 2018 was CHF 21.5 Mio.

\*Here, there is a difference, as the 39.8 Mio. are taken from the budget drawn up before the accounting year, and the 42.3 Mio. refer to the effective expenses.

#### Controlling, Finance, Human Resources

Controlling, Finance, Human Resources belong to the administration and support of the department. Together with the dean, they set the annual budget of the department.

#### Salaries

Salaries are based on function, experience and performance and are not defined by the department. All conditions of employment are based on the Federal Personnel Act and the Personnel Ordinance of the ETH Domain. The specific salary of a professor is discussed and set by the ETH Board (ETH-Rat). On 1 January 2020, salaries were as follows:

- For full professors: between CHF 216,050 and CHF 284,270 • For associate professors: between CHF 184,790 and CHF 253,010 • For assistant professors: between CHF 153,494 and CHF 221,714 • For doctoral students: between CHF 47,040 and CHF 50,040 • For scientific assistants I: between CHF 70,300 and CHF 80,320 • For postdocs/scientific assistants II: between CHF 88,600 and CHF 97,600

#### BSc of Architecture

Between 2014 and 2018 on average 926 Bachelor's degree students • Each year on average 244 new students • Each year an average 172 Bachelor's students graduate, 70.5% of those who start • Gender ratio in 2018: F 47%/M 53% • CH vs non-CH residents in 2018: CH 88%/non-CH 12% • Structure of the programme: 6 semesters • Estimated individual living cost per month: CHF 2,040

#### MSc of Architecture

Between 2014 and 2018 on average 642 Master's degree students (with MSc Integrated Building Systems). Every year an average 210 new students enroll • Every year, on average 173 Master graduates, 82% of those who started Master's course • Applicants into master with bachelor other than ETH bachelor: 1268, accepted 434 (34.2%) • Other universities (non-CH) acceptance rate at 13.3% • EPFL acceptance rate at 93.5% • AAM acceptance rate 96.5% • Gender ratio in 2018: F 45%/M 55% • CH vs non-CH residents in 2018: 74%/non-CH 26% • Master's thesis (2014–2018) average student per semester per thesis: • A (Urban Situation): 14.5 • B (Architectural Object): 38.5 • C (Constructive Detail): 42.5 • Free diploma: 6.8 • Total duration structure of programme: 4 semester + 1 year internship of BSc + MSc Architecture average semesters to complete

14.8 in 2018 • Estimated individual living cost per month: CHF 2040

#### MSc in Integrated Building Systems

The Master in Integrated Building System is a small interdisciplinary, institute-overarching MSc programme at the D-ARCH. The programme offers a focus on the thermal energetic performance and the environmental impacts of and on buildings. Students with an ETH Bachelor's degree in Architecture, Civil Engineering, Mechanical Engineering or others are allowed to join the programme via an application process.

#### MSc in Landscape Architecture

The Master programme started its first semester in HS 2020. It focuses on the design and planning of open spaces and landscapes.

#### MAS Programme at D-ARCH

MAS (Master of Advanced Studies) programmes aim to give greater or interdisciplinary depth to an original academic qualification or may lead to a change of profession. They correspond to at least 60 ECTS credits, require a Master's thesis or project work and generally last between one year full-time and two years part-time. At the D-ARCH the seven following MAS programmes are currently taught:

- MAS ETH in Architecture and Digital Fabrication (MAS ETH DFAB) • MAS ETH in Architecture, Real Estate, Construction (MAS ETH ARC) • MAS ETH in Gesamtprojektleitung Bau (MAS ETH GPB) • MAS ETH in History and Theory of Architecture (MAS ETH GTA) • MAS ETH in Housing (MAS ETH HS) • MAS ETH in Urban Design (MAS ETH UD) • MAS UPM/ETH in Collective Housing • a new MAS in Urban and Territorial Design will be initiated in HS 2021 • The tuition fee for a whole MAS programme ranges between CHF 15,000 and CHF 40,000

#### CAS Programme at D-ARCH

CAS (Certificates of Advanced Studies) programmes are smaller programmes of at least 10 ECTS giving the possibility for already working university graduates to specialise in a particular subject. There are four CAS programmes currently: • CAS ETH ARC in Digitalisierung (CAS ETH ARC Digital) • CAS ETH ARC in Gesamtprojektleitung (CAS ETH ARC Projekt) • CAS ETH ARC in Unternehmensführung (CAS ETH ARC UFAL) • CAS ETH ARC in Immobilienstrategien urban-peri-urban • The costs for the CAS programmes are borne by the participants and amount to ca. CHF 14,000



#### Institutes and Divisions

The professorships at the Department of Architecture are part of institutes which focus on a specific range of topics. Within an institute, there exists a greater exchange in the form of joint projects and joint agendas. The institutes of the D-ARCH are: • Institute of Design and Architecture (IEA) • Institute of Technology in Architecture (ITA) • Institute for the History and Theory of Architecture (gta) • Institute of Landscape and Urban Studies (LUS) • Institute of Construction History and Preservation (IDB). The Network City and Landscape (NSL) is an overarching grouping of institutes, namely the LUS Institute of the D-ARCH and other institutes of the

Department of Civil, Environmental and Geomatic Engineering (D-BAUG). (Geschäftsordnung, Art. 4)

#### Institut für Entwurf und Architektur (IEA)

The Institute of Design and Architecture (IEA) teaches the disciplines of design and construction, which is seen as an essential part of education at the Department. It groups the 24 professors involved in studio teaching. Established in 2016, it aims to coordinate and discuss matters concerning the studio curriculum and diploma, to exchange and develop expertise in studio teaching, and to represent the architects teaching at the school where necessary. The annual budget of the IEA amounted in 2018 to CHF 13.5 Mio., which corresponds to 34% of ETH Basic Funding for the D-ARCH.

#### Institut für Technologie in der Architektur (ITA)

The Institute of Technology in Architecture (ITA) has been housed in the Arc\_Tec\_Lab since 2016 and groups seven professors that develop teaching and research in the fields of structural design, robotic fabrication, building technology, CAAD and building processes. The annual budget of the ITA amounted in 2018 to CHF 7 Mio., which corresponds to 17.6% of ETH Basic Funding for the D-ARCH.

#### Institut für Geschichte und Theorie der Architektur (gta)

The Institute for the History and Theory of Architecture (gta) consists of four professors and one visiting professor, who are all involved in the teaching and research in the history and theory of architecture and urbanism. The gta encompasses the gta Archives, its publishing house (gta Verlag), its exhibition platform (gta Exhibitions) and gta Digital, a unit devoted to developing methods and tools for digital architectural history. The annual budget of the gta amounted in 2018 to CHF 5.3 Mio., which corresponds to 13.3% of ETH Basic Funding for the D-ARCH • There are currently 12 doctoral students (66.6% of whom are women).

#### Institut für Landschaft und Urbane Studien (LUS)

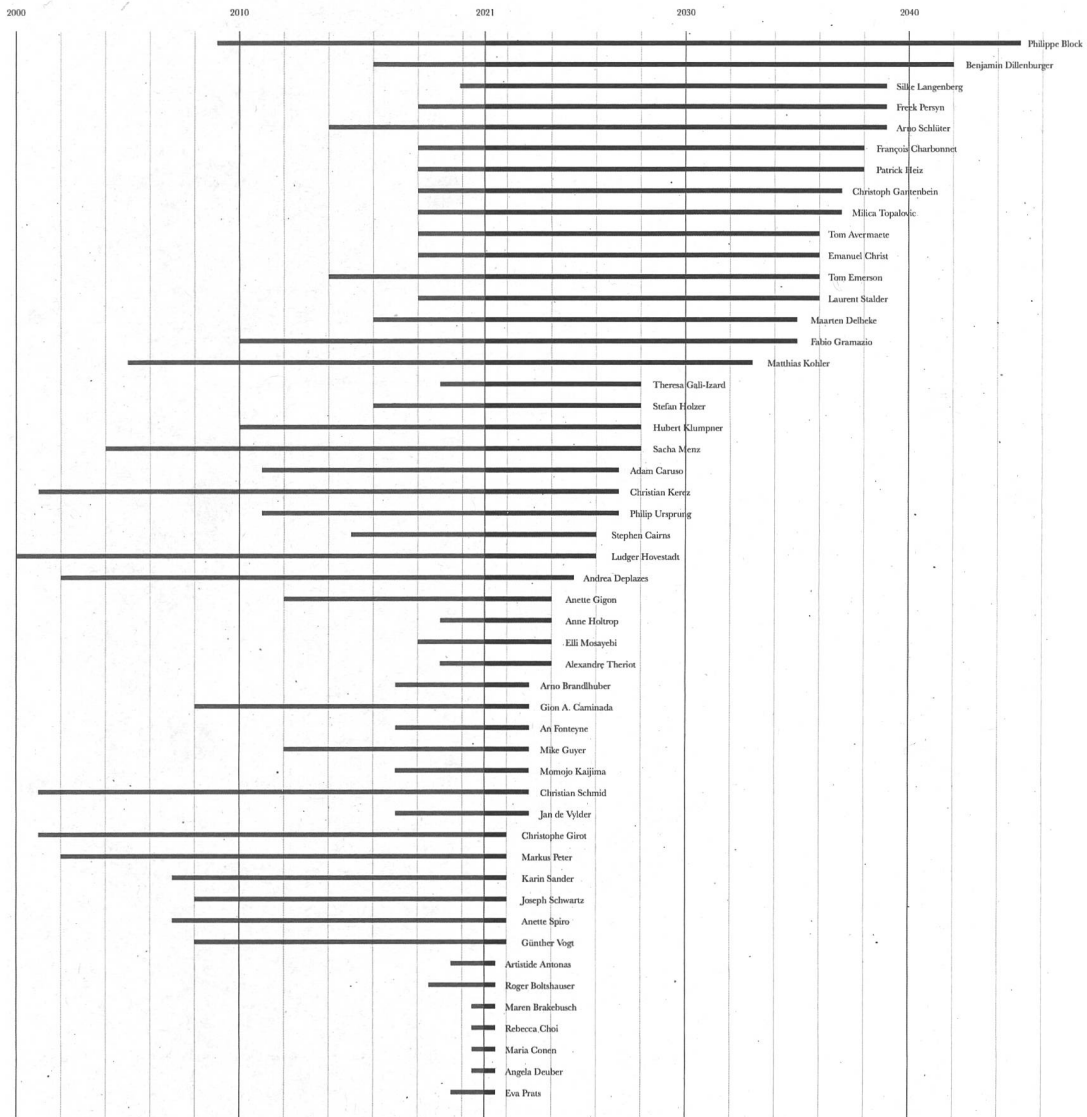
The Institute of Landscape and Urban Studies (LUS) consists of seven chairs and one adjunct professor, covering teaching and research in topics related to the big-scale environment: cities, urban areas, landscapes and territories. The LUS is part of the Network City and Landscape (NSL). The annual budget of the LUS amounted in 2018 to CHF 4.4 Mio., corresponding to 11.1% of ETH Basic Funding for the D-ARCH.

#### Institut für Denkmalpflege und Bauforschung (IDB)

The Institute of Construction History and Preservation (IDB) consists since 2020 of two professorships, dealing with building archaeology, construction history and practical conservation. The annual budget of the IDB amounted in 2018 to CHF 1.2 Mio., which corresponds to 3% of ETH Basic Funding for the D-ARCH.

#### Robotic Fabrication Laboratory (RFL) at ITA

The Robotic Fabrication Laboratory (RFL) is a flagship of the department's research into digital production methods. It is a multi-robotic system based on an overhead running gantry system. Thus, a total of four six-axis robots can cooperatively work on a maximum volume of 43 by 16 by 8 meters. It covers the complete ground floor workshop space of the ITA building (HIB). The RFL is structurally an entity of the ITA Institute.



Projected professorial contract end dates, 2021. Image: Martina Hügli

### NSL – Netzwerk Stadt und Landschaft

The Network City and Landscape (NSL) is not an institute (like LUS, gta, ITA, IDB, IEA) but a coalition of five different institutes. The NSL is an interdisciplinary platform in the sense that it is formed by professorships from the departments of architecture, and civil, environmental and geomatic engineering (D-BAUG). It is thus an institutionalised link to D-BAUG. Three of the five NSL institutes are part of D-BAUG, working together with the Institute of Landscape and Urban Studies (LUS) and the gta Chair of the History and Theory of Architecture from D-ARCH.

### ETH Wohnforum – ETH CASE

The ETH Wohnforum – ETH Case (Centre for Research on Architecture, Society & the Built

Environment) is an entity of the LUS Institute and acts as a platform for researching and teaching at the interface between social practice and the built environment. It was founded in 1990 and works hand in hand with a lot of different stakeholders.



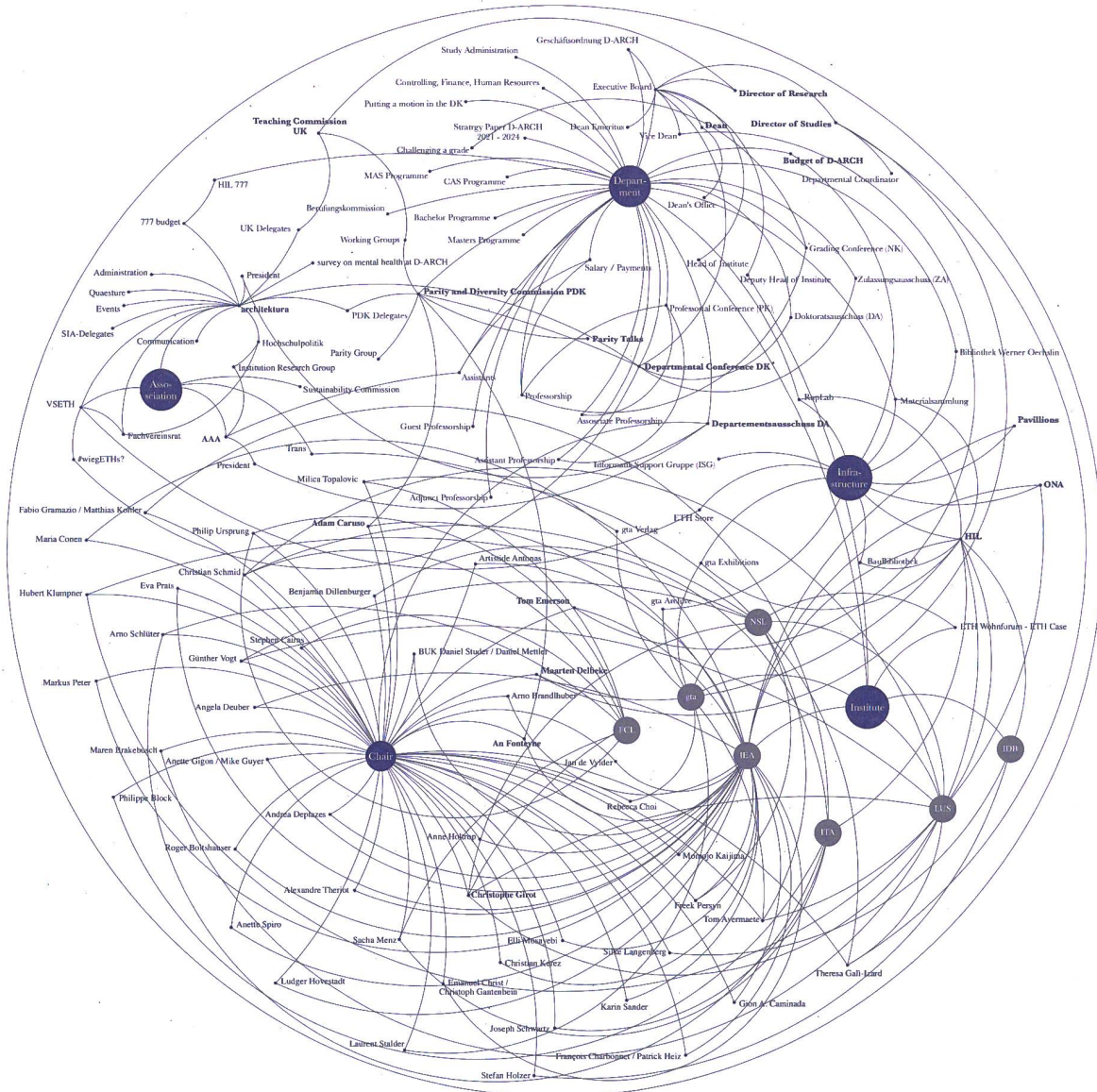
Arno Brandhuber

Professor, IEA • DE • Brandhuber+ [www.bplus.xyz](http://www.bplus.xyz)  
 • Associate Professor since 2017, until 2023 • Focus: Online TV station, aimed at reaching a broader au-

dience. As part of the teaching programme, s+ is offering different classes which are focusing on the medium of video as a design tool. Each design studio is dedicated to a contemporary topic which is re-defining our architectural practice, such as: «The Property Show» (2017), «Real Virtuality» (2018), «Architecture as Argument» (2018), «Once Upon a Time in the Future...» (2019) and «Housing the Non-Human» (ongoing). [www.station.plus](http://www.station.plus) • Language: EN/DE

Gion A. Caminada

Associate Professor, IEA • CH • Caminada Architekten [www.caminada-architekten.ch](http://www.caminada-architekten.ch) • Chair of Architecture and Design. Assistant Professor 1998. Professor since 2008, until 2023 • Focus: «ORTE SCHAFFEN ist ein Projekt für den Dialog zwischen Wissenschaft, Wirtschaft, Politik, Handwerk,



Structure of D-ARCH, 2021. Image: Martina Hügli

Architektur und anderen Disziplinen. Die Kernidee besteht darin, Räume zu schaffen, die einen unmittelbaren Bezug zu ihren Bewohnern haben.» [www.caminada.arch.ethz.ch](http://www.caminada.arch.ethz.ch) • Language: DE

Adam Caruso

Professor, IEA • CA • Caruso St John Architects [www.carusostjohn.com](http://www.carusostjohn.com) • Chair of Architecture and Construction. Professor since 2011, until 2027 • Focus: «The evident failure of architecture to address the imbalances of contemporary life provided the motivation to look again at the more ideological and programmatic promises of modernism, particularly the second wave of the 60s and 70s, when discourse was broadened to encompass themes of gender, the legacies of empire and the growing imbalances in our environment.» [www.caruso.arch.ethz.ch](http://www.caruso.arch.ethz.ch) • Language: EN

François Charbonnet

Professor, IEA • CH • Made In [www.min.swiss](http://www.min.swiss) • Chair of Architecture and Design, together with office partner Patrick Heiz. Professor since 2018, until 2038. Teaches the «Voluptas» studio • Focus: «Amending the millenary Vitruvian ordinances of firmitas, utilitas and venustas, Voluptas initiates a transversal investigation on contemporary issues and sets combinatory dynamics as the channel of proliferating singularities.» [www.voluptas.arch.ethz.ch](http://www.voluptas.arch.ethz.ch) • Language: EN

Emanuel Christ

Professor, IEA • CH • Christ & Gantenbein [www.christgantenbein.com](http://www.christgantenbein.com) • Chair of Architecture and Design, together with office partner Christoph Gantenbein. Professor since 2018, until 2036 •

Teaching second-year course since 2018 • Focus: «Working with built references is essential for architecture students. In architecture, a large part of the knowledge is implicitly embedded into technical drawings or models.» [www.christ-gantenbein.arch.ethz.ch](http://www.christ-gantenbein.arch.ethz.ch) • Language: EN/DE

Jan De Vylder

Associate Professor, IEA • BE • architecten jan de vylder inge vinck [www.architectenjddiv.com](http://www.architectenjddiv.com) • Associate Professor since 2017, until 2023 • Focus: «Words of a universon, words in a carousel, words on a journey. The carousel architecture will be. The journey architecture needs to undertake. Universon as a personal world. Carousel as an on-going world. Journey as a discovery of the world.» [www.de-vylder.arch.ethz.ch](http://www.de-vylder.arch.ethz.ch) • Language: EN



## Andea Deplazes

Professor, IEA • CH • Bearth & Deplazes Architekten AG [www.bearth-deplazes.ch/de](http://www.bearth-deplazes.ch/de) • Chair of Architecture and Construction. Assistant Professor 1997. Professor since 2002, until 2025 • Teaching first-year course since 2017 • Focus: Building typologies, Contemporary construction techniques. [www.deplazes.arch.ethz.ch](http://www.deplazes.arch.ethz.ch) • Language: DE

## Tom Emerson

Professor, IEA • UK • 6a architects [www.6a.co.uk](http://www.6a.co.uk) • Chair of Architecture and Construction. Assistant Professor 2010. Professor since 2014, until 2036 • Focus: «The design studio aims to evolve naturally from making to the territory. An approach which combines the inventiveness of the bricoleur with the care of the gardener. It is about reclaiming natural contingency rejected by modernism by the re-use of materials, buildings, territories and knowledge. If the task is at the scale of the maker, the means are direct; materials and tools. When operating at a larger scale the architect's tools become the Atlas, a collective survey that transforms the territory through the act of looking and drawing.» [www.emerson.arch.ethz.ch](http://www.emerson.arch.ethz.ch) • Language: EN

## An Fonteyne

Associate Professor, IEA • BE • noAarchitecten [www.noa-architecten.net](http://www.noa-architecten.net) • Chair of Architecture and Design. Professor since 2017, until 2023 • Focus: The studio is conceived as a «Denkraum»: «The «Denkraum» is a space of presence [...] developing a common design endeavour, a joined output based on associative thinking and reflection by analogy». «Making architecture demands a constant and dynamic reading of given contexts under the angle of specific briefs and questions, allowing to unveil explicit and implicit relationships stemming from past actions and present dynamics». The studio investigates tools such as writing, reading and also performative acts to enrich the design discourse. [www.fonteyne.arch.ethz.ch/en](http://www.fonteyne.arch.ethz.ch/en) • Language: EN

## Christoph Gantenbein

Professor, IEA • CH • Christ & Gantenbein [www.christ-gantenbein.arch.ethz.ch](http://www.christ-gantenbein.arch.ethz.ch) • Chair of Architecture and Design, together with office partner Emanuel Christ. Professor since 2018, until 2037 • Teaching second-year course since 2018 • Focus: «Working with built references is essential for architecture students. In architecture, a large part of the knowledge is implicitly embedded into technical drawings or models.» [www.christ-gantenbein.arch.ethz.ch](http://www.christ-gantenbein.arch.ethz.ch) • Language: EN/DE

## Annette Gigon

Professor, IEA • CH • Gigon Guyer [www.gigon-guyer.ch](http://www.gigon-guyer.ch) • Chair of Architecture and Construction, together with office partner Mike Guyer. Professor since 2012, until 2024 • Focus: «This process can involve typological examinations of specific functions (such as schools, libraries, theatres, art spaces) or a deepening of knowledge about materials, about building structures in relation to space, about the expressive potential of facades, or about specific topical focal points.» [www.gigon-guyer.arch.ethz.ch](http://www.gigon-guyer.arch.ethz.ch) • Language: DE

## Mike Guyer

Professor, IEA • CH • Gigon Guyer [www.gigon-guyer.ch](http://www.gigon-guyer.ch) • Chair of Architecture and Construction, together with office partner Annette Gigon. Professor since 2012, until 2023 • Focus: «This process can involve typological examinations of specific functions (such as schools, libraries, theatres, art spaces) or

a deepening of knowledge about materials, about building structures in relation to space, about the expressive potential of facades, or about specific topical focal points.» [www.gigon-guyer.arch.ethz.ch](http://www.gigon-guyer.arch.ethz.ch) • Language: DE

## Patrick Heiz

Professor, IEA • CH • Made In [www.min.swiss](http://www.min.swiss) • Chair of Architecture and Design, together with office partner François Charbonnet. Professor since 2018, until 2038 • Teaches the «Voluptas» studio • Focus: «Amending the millenary Vitruvian ordinances of firmitas, utilitas and venustas, Voluptas initiates a transversal investigation on contemporary issues and sets combinatory dynamics as the channel of proliferating singularities.» [www.voluptas.arch.ethz.ch](http://www.voluptas.arch.ethz.ch) • Language: EN

## Anne Holtrop

Associate Professor, IEA • NL • Studio Anne Holtrop [www.anneholtrop.nl](http://www.anneholtrop.nl) • Associate Professor since 2019, until 2024 • Focus: «Material gesture». The idea behind the research on material gesture is to shift the focus towards the process of working with a material and the unique gestures that it dictates. It seeks to find an expression of architecture as a result of intervening in the process of making.» [www.holtrop.arch.ethz.ch](http://www.holtrop.arch.ethz.ch) • Language: EN

## Momoyo Kaijima

Associate Professor, IEA • JP • Atelier Bow-Wow [www.bow-wow.jp](http://www.bow-wow.jp) • Chair of Architectural Behaviorology. Associate Professor since 2017, until 2023 • Focus: «Architectural Behaviorology is our architectural design method, in which we focus on creating better accessibility to such local resources. Through the lens of an ethnographical network, we cultivate the local resources to rediscover unconscious and invisible relationships among them, and then activate them by proposing architectural design.» [www.kaijima.arch.ethz.ch](http://www.kaijima.arch.ethz.ch) • Language: EN

## Christian Kerez

Professor, IEA • CH • Christian Kerez [www.kerez.ch](http://www.kerez.ch) • Chair of Architecture and Design • Visiting Professor 2001, Assistant Professor 2003, Full Professor since 2009, until 2027 • Taught first-year course design until 2017 • Focus: «Design as we understand it is neither the expression of an autonomous artistic practice nor is it a sheer service. The architectural design is a means of criticism, a means to understand the world around us and using this understanding in order to reshape it.» [www.kerez.arch.ethz.ch](http://www.kerez.arch.ethz.ch) • Language: EN/DE

## Elli Mosayebi

Associate Professor, Dr., IEA • CH • EMI [www.emi-architekten.ch](http://www.emi-architekten.ch) • Chair of Architecture and Design. Associate Professor since 2018, until 2024 • Focus: Zweite Moderne «Zwölf Thesen zur Architektur der Zweiten Moderne». [www.mosayebi.arch.ethz.ch](http://www.mosayebi.arch.ethz.ch) • Language: DE

## Markus Peter

Professor, IEA • CH • Meili Peter Partner [www.meilipeterpartner.ch](http://www.meilipeterpartner.ch) • Chair of Architecture and Construction. Professor since 2002, until 2022 • Focus: «Since the 1960s, we have observed a separation of architecture and interior design, a divorce between structure, shell and interior design. In the worst case, this means that the elementary architectural relationship between structure and form, or light and space, is abandoned.» The studio deals with questions of contemporary construction. [www.peter.arch.ethz.ch](http://www.peter.arch.ethz.ch) • Language: DE

## Karin Sander

Professor, IEA • DE • Artist [www.karinsander.de](http://www.karinsander.de) • Chair of Architecture and Art. Professor since 2007, until 2022 • Focus: As a conceptual artist Karin Sander creates art which relates closely to social, cultural and spatial topics. She is responsible for the art education of the first year students, and with a diverse team of practicing artists offers a wide range of perspectives on artistic practice. [www.sander.arch.ethz.ch](http://www.sander.arch.ethz.ch) • Language: EN/DE

## Annette Spiro

Professor, IEA • CH • Spiro + Gantenbein Architekten [www.spiro-gantenbein.ch](http://www.spiro-gantenbein.ch) • Chair of Architecture and Construction. Professor since 2007, until 2022 • Focus: Konstruktion. «Der Bauplan ist ein technisches Werkzeug. Gleichzeitig ist er ein einzigartiges Ausdrucksmittel und trägt die Handschrift des Architekten.» Taught first-year course construction and design, has been teaching second-year course since 2017. [www.spiro.arch.ethz.ch](http://www.spiro.arch.ethz.ch) • Language: DE

## Alexandre Theriot

Associate Professor, IEA • FR • Bruther <http://bruther.biz> • Associate Professor since 2019 until 2024 • Focus: «The objective of the practice and the teaching is to understand contemporaneity.» The design studio works with the notions of «Economy and Excess»: Economy is omnipresent in any architectural project, but, interpreted differently, can lead to generosity – «excess», that makes the strength and uniqueness of a place. «The places produced by such an approach, we have named them machine-buildings: economical, non-rational, flexible, adaptable, playful, efficient spaces whose existence is based on technique». «[...] economy will be the tool for the exploration of our uncertainties». «In whatever way beauty results from balance.» [www.works.arch.ethz.ch/faculty/alexandre-theriot](http://www.works.arch.ethz.ch/faculty/alexandre-theriot) • Language: EN

## Aristide Antonas

Visiting Lecturer, IEA • GR • Aristide Antonas [www.aristideantonas.com](http://www.aristideantonas.com) • Visiting lectureship 2019–2021 • Focus: «protocols as architecture», «infrastructure of the domestic sphere», «stability from the exaggeration of data flow». [www.doz.arch.ethz.ch/gastdoz/Antonas.html](http://www.doz.arch.ethz.ch/gastdoz/Antonas.html) • Language: EN

## Roger Boltshauser

Visiting Lecturer, IEA • CH • Boltshauser Architekten [www.boltshauser.info](http://www.boltshauser.info) • Guest lectureship since 2018 until 2020, extended until 2021 • Focus: The design studio focuses on different sustainable building methods and mirrors its interest in traditional and natural construction materials like clay or wood. Further, the studio is interested in the examination of local building traditions and its regional parameters. It engages in creative possibilities in working within a unique building culture without being «merely» referential. [www.doz.arch.ethz.ch/gastdoz/boltshauser.html](http://www.doz.arch.ethz.ch/gastdoz/boltshauser.html) • Language: DE

## Maria Conen

Visiting Lecturer, IEA • CH • Conen Sigl Architekten [www.conensigl.com](http://www.conensigl.com) • Visiting lectureship 2020–2021 • Focus: «Every era has its own particular economic, political, social, cultural and technical conditions in which new ideas constantly emerge: how we live together, how we live in society and what progress means. Neighbourhoods, villages, cities and even the landscape are shaped by the resulting buildings of these eras.» [www.doz.arch.ethz.ch/gastdoz/archiv/gastdozentin-maria-conen.html](http://www.doz.arch.ethz.ch/gastdoz/archiv/gastdozentin-maria-conen.html) • Language: EN/DE



#### Angela Deuber

Visiting Lecturer, IEA • CH • Angela Deuber Architects [www.angeladeuber.com](http://www.angeladeuber.com) • Visiting lectureship 2020–2021 • Focus: «Angela Deuber's architecture is characterized by stringently applied rules that are translated into clear structures, while at the same time highlighting the beauty of deliberately chosen elements and nature.» [www.doz.arch.ethz.ch/gastdoz/gastdozentin-angela-deuber.html](http://www.doz.arch.ethz.ch/gastdoz/gastdozentin-angela-deuber.html) • Language: DE

#### Eva Prats

Visiting Lecturer, IEA • ES • Flores I Prats Architects [www.floresprats.com](http://www.floresprats.com) • Visiting lectureship 2019–2021 • Focus: «Our academic experience shares a common working method with our studio: drawing by hand as a means of making mental progress in full view of other people. In this sense, school desks are similar to our studio tables, where drawing is a tool that allows doubt to enter, that makes visible the difficulties of moving forward; at the same time, this method enables progress, precisely because these difficulties are on view.» [www.buildingcommunities.ch](http://www.buildingcommunities.ch) • Language: EN

#### Daniel Mettler

Lecturer, BUK • CH • Wiedmann Mettler [www.wiedmannmettler.ch](http://www.wiedmannmettler.ch) • Dozentur für Bautechnologie und Konstruktion (BUK), since 2013 • Focus: The lectureship BUK teaches the fundamentals of construction and reflects critically on their potential for future developments. They offer support for master- and semester works, teach basics of construction in the first and second year and offer the elective «Neue konstruktive Orte». [www.buk.arch.ethz.ch](http://www.buk.arch.ethz.ch) • Language: DE

#### Daniel Studer

Lecturer, BUK • CH • Studerarchitekt [www.studerarchitekt.ch](http://www.studerarchitekt.ch) • Dozentur für Bautechnologie und Konstruktion (BUK), since 2013 • Focus: The lectureship BUK teaches the fundamentals of construction and reflects critically on their potential for future developments. They offer support for master- and semester works, teach basics of construction in the first and second year and offer the elective «Neue konstruktive Orte». [www.buk.arch.ethz.ch](http://www.buk.arch.ethz.ch) • Language: DE

#### Philippe Block

Professor, Dr., ITA • BE • Chair of Architecture and Structure. Assistant Professor 2005. Full Professor since 2009, until 2045 • Leads Block Research Group (BRG) with Dr. Tom Van Mele • Focus: «Research at the BRG focuses on several core areas, including analysis of masonry structures, graphical analysis and design methods, computational form finding and structural design, discrete element assemblies, and fabrication and construction technologies. The central goals of our geometry-based approach are to understand the real demands of complex structural design and engineering problems and to develop new algorithms and efficient, accessible tools for structurally informed design.» [www.block.arch.ethz.ch](http://www.block.arch.ethz.ch) • Language: EN/DE

#### Benjamin Dillenburger

Associate Professor, Dr., ITA • DE • Chair of Digital Building Technologies. Tenure track Full Professor since 2016 • Focus: Development of building technologies based on the close interplay of computational design methods, digital fabrication and new materials. [www.dbt.arch.ethz.ch/team-member/benjamin-dillenburger](http://www.dbt.arch.ethz.ch/team-member/benjamin-dillenburger) • Language: EN/DE

#### Fabio Gramazio

Professor, ITA • CH • Gramazio Kohler Architects [www.gramaziokohler.com](http://www.gramaziokohler.com) • Chair of Architecture and Digital Fabrication, together with Matthias Kohler. Assistant Professor 2005, professor since 2010, until 2035 • Co-leads «Gramazio Kohler Research» • Focus: «Our research focuses on additive digital fabrication techniques used for building non-standardized architectural components. In brief, additive fabrication can be described as a three-dimensional printing process. By positioning material precisely where it is required, we are able to interweave functional and aesthetic qualities into a structure.» [www.gramaziokohler.arch.ethz.ch](http://www.gramaziokohler.arch.ethz.ch) • Language: EN

#### Ludger Hovestadt

Professor, Dr., ITA • DE • Chair of Architecture and CAAD. Professor since 2000, until 2026 • Leads a design semester since 2019 called «Metora» • Focus: «The studio works on the idea that a substantial understanding of today's technology (internet of things, big data, machine intelligence...) changes the perspective to architectural theory and will result in different architectural designs and building constructions.» [www.meteora.ch](http://www.meteora.ch) • Language: EN/DE

#### Matthias Kohler

Professor, ITA • CH • Gramazio Kohler Architects [www.gramaziokohler.com](http://www.gramaziokohler.com) • Chair of Architecture and Digital Fabrication, together with Fabio Gramazio. Professor since 2005, until 2033 • Co-leads «Gramazio Kohler Research» • Focus: «Our research focuses on additive digital fabrication techniques used for building non-standardized architectural components. In brief, additive fabrication can be described as a three-dimensional printing process. By positioning material precisely where it is required, we are able to interweave functional and aesthetic qualities into a structure.» [www.gramaziokohler.arch.ethz.ch](http://www.gramaziokohler.arch.ethz.ch) • Language: EN

#### Sacha Menz

Professor, ITA • CH • sam architekten [www.samarch.ch](http://www.samarch.ch) • Chair for Architecture and Building Process. Professor since 2004, until 2028 • Focus: «In our teaching, we link the foundational knowledge gained in core subjects with topics such as acquisition, building economics, definition of services, and design coordination in order to instill students with an in-depth understanding of the building process and the importance of integrated architectural design.» [www.map.arch.ethz.ch](http://www.map.arch.ethz.ch) • Language: DE

#### Joseph Schwartz

Professor, Dr., ITA • CH • Dr. Schwarz Consulting AG [www.drsc.ch](http://www.drsc.ch) • Chair of Structural Design. Professor since 2008, until 2022 • Focus: «Research is developed in three main areas: computational graphic statics and its potential for the design and analysis of three-dimensional structure systems; the interaction between form, forces and material systems through the development of novel construction technologies.» [www.schwartz.arch.ethz.ch](http://www.schwartz.arch.ethz.ch) • Language: EN/DE

#### Arno Schlüter

Professor, Dr., ITA • DE • KEOTO AG [www.keoto.ch](http://www.keoto.ch) • Chair of Architecture and Building Systems (A/S). Professor since 2014, until 2039 • Focus: «A/S researches on active and passive systems for the energy supply and climate control of buildings with projects ranging from components to neighbourhoods, from design to operation. The motivation and aim of our research is to realize a CO<sub>2</sub>-neutral built en-

vironment that efficiently consumes and produces energy while providing high user comfort.» [www.systems.arch.ethz.ch](http://www.systems.arch.ethz.ch) • Language: EN/DE

#### Tom Avermaete

Professor, Dr., gta, LUS • NL • Chair of the History and Theory of Urban Design. Professor since 2018, until 2036 • Focus: «The chair explores urban design through three main foci. First, it approaches urban design as material culture, and posits that urban design is not only a set of intangible ideas and concepts but also a knowledge field of material resources, craftsmanship and construction. Secondly, inspired by the diversity and shifting geographies of global urbanisation, the chair broadens the scope of urban design as a cross-cultural knowledge-field by integrating urban design experiences beyond the Euro-American. Finally, the chair conceives of urban design as a common matter. It postulates that the development of cities is as much a prerogative of citizens as of designers, constructors and developers.» [www.avermaete.arch.ethz.ch](http://www.avermaete.arch.ethz.ch) • Language: EN

#### Maarten Delbeke

Professor, Dr., gta • BE • Current Director of Studies • Chair of the History and Theory of Architecture. Professor since 2016, until 2035 • Focus: «The Chair of the History and Theory of Architecture focuses its research on the history of architecture and architectural theory in Europe c.1450–1850. Architecture theory here is understood in the broadest sense of the word, ranging from the poetics of architecture as laid down in treatises to any discourse, practice, actor, or artifact that sheds light on how architecture was understood and legitimized as a cultural practice in different historical and cultural contexts.» [www.delbeke.arch.ethz.ch](http://www.delbeke.arch.ethz.ch) • Language: EN

#### Laurent Stalder

Professor, Dr., gta • CH • Chair of the Theory of Architecture. Assistant Professor 2006, Full Professor since 2018, until 2036 • Focus: «The chair seeks to understand the profound changes in technology and society that took place over the course of the twentieth century – on the one hand as a new framework for architectural production, and on the other as new points of reference in architectural design. Established methodologies in the history and theory of architecture are thereby complemented by approaches derived from the history of technology and social history. Thus the traditional understanding of architecture – as a discipline defined primarily in terms of authorship – is called into question and assessed in the light of actual building practice.» [www.stalder.arch.ethz.ch](http://www.stalder.arch.ethz.ch) • Language: EN/DE

#### Philip Ursprung

Professor, Dr., gta • CH • Chair of the History of Art and Architecture. Professor since 2011, until 2027 • Focus: «His research deals with the history of modern and contemporary art and architecture with a focus on North American art in the 1960s and 1970s and European architecture since the 1980s.» [www.ursprung.arch.ethz.ch](http://www.ursprung.arch.ethz.ch) • Language: EN/DE

#### Rebecca Choi

Visiting Lecturer, Dr., gta • USA • Researcher [www.rebeccachoi.com](http://www.rebeccachoi.com) • Visiting Professor 2020–2021 • Focus: «Her research examines the relationship between architecture and race in postwar America. Her research ambitions include broadening architecture's disciplinary boundaries to include greater intersectionality and collaboration with sister disciplines such as art history, planning, geography as

well as with discourses in the field of critical race theory and gender studies.» [www.choi.arch.ethz.ch](http://www.choi.arch.ethz.ch) • Language: EN

Teresa Galí-Izard

Professor, LUS • ES • [Arquitectura Agronomia www.arquitecturaagronomia.net](http://www.arquitecturaagronomia.net) • Chair of Landscape Architecture. Professor since 2019, until 2028 • Director of Studies for MSc Landscape Architecture • Focus: The interface between landscape architecture and agronomy and on regenerative interactions between people, animals and landscape. She is particularly interested in sustainability in this respect. Her results help to preserve the biological value and structure of landscapes, thereby also helping to counter the rapid loss of biodiversity. [www.mscla.arch.ethz.ch](http://www.mscla.arch.ethz.ch) • Language: EN

Christophe Girot

Professor, LUS • FR • [Atelier Girot www.girot.ch](http://www.girot.ch) • Chair of Landscape Architecture. Professor since 2001, until 2022 • Focus: Teaches history of landscape. Project mixing landscape and robotics, initiated the Msc Landscape Architecture at ETH in HS 2020. «The environmental and aesthetic challenges of the 21st century call for a new design intelligence in landscape architecture. Our aim is to train a new generation of designers, planners and decision-makers in the private sector and public institutions, combining the expertise of landscape architecture with that of architecture.» [www.girot.arch.ethz.ch](http://www.girot.arch.ethz.ch) • Language: EN/DE

Hubert Klumpner

Professor, LUS • AT • Urban Think Tank [www.u-tt.com](http://www.u-tt.com) • Chair of Architecture and Urbanism. Professor since 2010, until 2028 • Focus: «Across the semesters, students of the Klumpner Chair Design Studio learn by studying existing international test cases in a variety of research areas. Students then formulate hypotheses, plan urban scenarios, model their designs through various formats, and communicate their intentions in a series of critiques and reviews.» [www.klumpner.arch.ethz.ch](http://www.klumpner.arch.ethz.ch) • Language: EN

Freek Persyn

Professor, LUS • BE • [51n4e www.51n4e.com](http://www.51n4e.com) • Chair of Architecture and Urban Transformation. Professor since 2018, until 2039 • Focus: «Newrope is the shared endeavour of rediscovering a territory, both as a shared history and a common future. The rediscovery of the territory comes with a reinvention of the large diversity of urban practices that inhabit and shape them.» [www.persyn.arch.ethz.ch](http://www.persyn.arch.ethz.ch) • Language: EN

Christian Schmid

Adjunct Professor, Dr., LUS & Future Cities Laboratory (FCL) • CH • Geographer, sociologist and urban researcher. 1999–2018 ETH Studio Basel. Adjunct Professor of Sociology since 2001, until 2023 • Focus: Teaches sociology for the first year. Wide focus placing architecture in a social and cultural context. Henri Lefebvre, Planetary Urbanization, Zurich Metropolitan Region. [www.soziologie.arch.ethz.ch](http://www.soziologie.arch.ethz.ch) • Language: DE

Milica Topalović

Professor, LUS • RS • Chair of Architecture and Territorial Planning. Professor since 2018, until 2037 • Focus: «Architecture of Territory investigates phenomena and processes of urban transformation of contemporary territories. This approach comprises a shift of interest from cities to broader territorial frames, and to what was once considered the non-ur-

ban realm or the city's «constitutive outside»: the city's hinterlands, «rural» countrysides and «nature», including alpine zones, jungles, deserts and oceans.» [www.topalovic.arch.ethz.ch](http://www.topalovic.arch.ethz.ch) • Language: EN

Günther Vogt

Professor, LUS • CH/LI • [Vogt Landschaftsarchitekten www.vogt-la.com](http://www.vogt-la.com) • Chair of Landscape Architecture. Assistant professor 2005, professor since 2008, until 2022 • Focus: «Der Studiengang vermittelt Kompetenzen der Landschaftsarchitektur in Analyse, Entwurf und Planung, Materialien und Konstruktion, Naturwissenschaften und Geisteswissenschaften. Digitale Analyse-, Entwurfs- und Planungsmethoden sind ein wesentlicher Teil der Ausbildung.» [vogt.arch.ethz.ch](http://vogt.arch.ethz.ch) • Language: EN/DE

Stephen Cairns

Adjunct Professor, Dr., FCL • AU • Professor since 2015, until 2026 • Programme leader of the Future Cities Laboratory (FCL) • Focus: «Current work is focused on the complex patterns of settlement emerging in the predominantly rice-growing hinterlands of many large cities in Southeast Asia, India and China. His practice-oriented research takes the form of the «Tropical Town» project, a planned/unplanned low-energy, high-density settlement for such urbanising hinterlands.» [www.fcl.ethz.ch](http://www.fcl.ethz.ch) • Language: EN

Maren Brakebusch

Visiting Lecturer, LUS • DE • Managing director at Vogt Landschaftsarchitekten [www.vogt-la.com](http://www.vogt-la.com) • Visiting lectureship 2020–2021 • Focus: «The global phenomenon of rising temperatures as a result of climate change requires, based on local conditions, individual solutions for the increasingly heating and condensed urban space. Programmes for heat mitigation describe fields of action and approaches, which are considered selectively and intersect with the political administrative space.» [www.doz.arch.ethz.ch/gastdoz/gastdozentin-maren-brakebusch.html](http://www.doz.arch.ethz.ch/gastdoz/gastdozentin-maren-brakebusch.html) • Language: DE

Stefan Holzer

Professor, Dr.-Ing., IDB • DE • Chair of Building Archaeology and Construction History. Professor since 2016, until 2028. Focus: «The current research projects of the «Building Archaeology and Construction History» group are focusing on the early modern period and the 19th century. Architecture and construction have always been intimately interdependent, even during periods when construction details were hidden behind the architectural appearance.» [www.holzer.arch.ethz.ch](http://www.holzer.arch.ethz.ch) • Language: DE

Silke Langenberg

Professor, Dr.-Ing., IDB, ITA • DE • Architect and Researcher [www.silkelangenberg.com](http://www.silkelangenberg.com) • Chair of Construction Heritage and Preservation. Professor since 2020, until 2039 • Focus: «Research focuses on diverse building stocks, both older and younger (as well as very young), questions of their value as monuments and challenges concerning their conservation. Within this context, the structurally outstanding engineering works in Switzerland as well as the built examples of newly developed construction processes and methods are of special interest.» [www.langenberg.arch.ethz.ch](http://www.langenberg.arch.ethz.ch) • Language: DE

## ASSOCIATIONS

AAA

AAA is the Association of Assistants. It represents the interests of assistants and doctoral students within the Department of Architecture.

President AAA

The President of AAA represents the «Mittelbau» at the Department Committee (DA).

VSETH

VSETH is the overarching organization of all students at ETH. It represents the voice of the students within ETH committees, drafts action papers and issues public statements to influence ETH regulations. It manages a broad infrastructure, advertisement channels and engages in consultation with student organizations. It also organizes big events, such as the «Erstsemestrigenfest». The network of organizations that VSETH manages, which can be divided into four categories: Associated Organisations (e.g. Z&H, Kosta), Commissions (e.g. Challenge, ETH MUN), Recognised Organisations (e.g. Bündnerclub) and Study Associations (e.g. ArchitekturA, AIV). All study associations are legally incorporated within VSETH as a part of their statutes.

Fachvereinsrat

The «Fachvereinsrat» is a summit of representatives of all student associations at ETH, which meets every third week during the semester. It is a controlling organ of the VSETH.

architektura

architektura is the student association of the D-ARCH. It represents the interests of the student body within the department. The members of the executive board are elected at the «Generalversammlung» (GA).

President architektura

The President of architektura represents the association from within and outside, organizes general meetings and holds the chair. They are the only student representative who takes part in the Department Committee (DA). The position also represents architektura in the «Fachvereinsrat» (FR) and has a seat in the «Mitgliederrat» (MR).

Quaestor architektura

The Quaestor manages the budget of architektura. The budget is determined for each semester and approved at the previous «Generalversammlung» (GV).

Hochschulpolitik («Hopo») architektura

«Hochschulpolitik» deals with questions regarding the politics of the department. It is responsible for coordinating the university policy activities of architektura at the Department of Architecture and in the VSETH. Coordinating the student delegates of the department committees and the VSETH is another main responsibility. «Hopo» organizes regular meetings with the student body, such as the «Institution Research Group» to discuss strategy and student position towards issues within D-ARCH.

## Administration architektur

Administration is responsible for communicating important information and announcements (Departmental Information, Final Submissions, Nachtwache, ...) amongst the student body and acts as a contact point for students.

## Communication architektur

Communication takes care of the visual appearance of the association and the promotion of its events.

## Events architektur

Events organizes and performs events for the students of the D-ARCH. For example, «Wednesdaze», the «Easter Apéro», or various guided tours (Opera house or Empa-building).

## SIA-Delegates

The SIA-Delegate represents the student body of the D-ARCH in the «Schweizerischer Ingenieur- und Architektenverein» (Swiss Society of Engineers and Architects, SIA). They are (re-) elected each semester by the student body at the «Generalversammlung» (GA).

## Parity Group

Self-organised group with a changing membership consisting of students, staff and professors. The group forms the organising committee for the Parity Talks, setting the topic and focus of the agenda as well as inviting guests to speak and organising workshops on chosen themes. The Parity Talks is the annual event dedicated to achieving gender and diversity parity in the D-ARCH. It takes place on a studio teaching day on or around 8th March. Anyone can get involved by attending a Parity Group meeting, ideally at the start of the semester but late-comers are also very welcome. Alternatively, you can email [parity@arch.ethz.ch](mailto:parity@arch.ethz.ch).

## Institution Research Group (IRG)

Institution Research Group (IRG) is a bi-weekly meeting for students interested in the democratic running of the department but not directly involved in architektur. The aim is to explain the structures of the department in order to empower students to engage politically within it. The IRG is also a place where the members of «Hop» or the UK share with interested students the current stand within the departmental committees which they participate in. «Hop» can also use the meeting to get a sense of the concerns of the student body regarding topics. A reminder is sent a few days ahead via mail, including a sum-up of the last meeting and invitation links for the Telegram Chat/Google Drive Folder.

## Arbeitsgruppe Nachhaltigkeit (AGN)

The Sustainability Commission (AGN) was formed after a group of students criticized the lack of sustainability topics in the departments teaching and questioned the position of sustainability within the department. Several meetings had been organized after a first call-for-action at a DK in HS 2019, which were also attended by professors Elli Mosayebi, Benjamin Dillenburger and Sacha Menz. The commission has its own website: [www.agn.arch.ethz.ch](http://www.agn.arch.ethz.ch) • In HS 2020 they initiated a material storage called «La Boîte» (HIL G 74), where material gathered at the end of the semester is collected and can be reused.

## wiegETHs?

«wiegETHs?» was a survey conducted by VSETH in FS 2019 and was answered by 42.2% of the

students at ETH. The questions were fleshed out together with professionals within the field of psychology and mostly focused on sexual harassment, bullying, mental health and the broader study climate at ETH. The results were evaluated in summer 2020 and showed for the first time statistically the precarious situation regarding the mental wellbeing of students, especially at the department of architecture • In total, 25% of the students at D-ARCH report having more than 5 symptoms of a mental illness, or at least 1 severe one. The ETH-wide percentage is at 17%, notably lower.

## Survey on Mental Health at D-ARCH

The «Survey on Mental Health at D-ARCH» was conducted by architektur in November 2020 as a follow-up survey of the «WiegETHs?» questionnaire. While comparable in structure, the major difference is that as only architecture students were surveyed, meaning more department-specific questions could be asked. The main findings are: • a weekly working time of 63 hours for students of architecture reported on average • 37% of students at D-ARCH show more than 5 symptoms of mental health issues • a frequent mismatch between workload and the given ECTS points • the current given workload is at a similar level to the semesters prior to the pandemic and hence not caused by the pandemic • 45% of students at D-ARCH divide design courses and lectures into two semesters at least once during their studies; mostly as a consequence of the high workload, leading to a prolongation of the already long study duration • Studying architecture at ETH and earning one's own living at the same time is barely compatible. In cases when students have to earn more than half of their living by themselves, a total of 66% split up the design course and lectures into two semesters.

## HIL777

HIL777 was a bottom-up project with the intention to capture the hard-to-use space in the foyer of HIL into a usable and open event area. The idea was brought up by the two students and the 777 in the name stands for the ID of the official permanent permit given by ETH fire authority for events. A lecture series and other events should be able to take place in a room that is openly accessible and can serve as a stage. The two-story room in the main entrance area of HIL was the perfect place for it. In order to receive the permit, all elements within the space had to be fireproofed. The inspector of the safety department personally checked whether the curtains were fire retardant, by trying to light them on fire with a matchstick.... Sadly, the event only happened twice in HS 2017 and FS 2018 and was not continued due to complex approval procedures by the fire safety department and spacial conflicts due to the Master's Theses exhibition. The creation of the space led their makers to the idea of the 777Budget, which has continued since then as part of architektur, each semester bringing lectures and events to members of the D-ARCH.

## 777Budget

The 777Budget is a grant from the architektur to support student projects with the aim of enriching the discourse and life on the Hönggerberg campus. Project teams can apply for funding before the start of every semester.

## trans magazin

trans magazin is a semi-annual professional journal of the Department of Architecture and has been managed by an independent student editorial team since 1997. The journal addresses current issues in architecture and urban development from

a variety of perspectives, such as the humanities, politics, philosophy and the arts. trans thus sees itself as a platform for interdisciplinary discourse. Until 2013, trans magazin was a part of architektur, but was split off for financial reasons, as the organizational structure of the architektur made it hard to deal with the financial requirements of the magazine. Since then, it has been located under the gta Verlag. The four editors are reimbursed for their work at the equivalent of a 20% student assistant position, and stay with the magazine for one year each. Two editors join and leave the team every semester, with this rhythm the team can reorganize themselves while maintaining a continuity. Usually the call for editors is published one or two months before the vernissage for the upcoming issue, every student from the department can apply. trans magazin is self-organised, meaning that the team itself chooses the new members. The launch of the new magazine and its vernissage usually happens on the first Thursday of the semester. The production cycle of the next magazine starts shortly before the vernissage, when the new editorial team is formed and the topic for the upcoming issue decided. The magazine is call-based, meaning everyone can offer a contributonal, from within or outside of the department, and the editorial team decide together which contributions to take further. During the semester the workload is moderate, while usually around two months before the next launch the intensive phase starts. The magazine of the Spring Semester is printed in mid-August, the one of the Autumn Semester at the end of January. trans magazin has a limited budget, it is financially supported by architektur and the gta Verlag, but tries to generate money from the launch events, from advertisements in the magazine, and the new «Paten-Programme». trans has an edition of 1000 and is printed at Ostschweiz Druck with a print cost of around CHF 10 000. The magazines are then sold for CHF 15 (students) or CHF 20 (regular). Since its redesign for trans#33 Pierre Benoit from Lausanne is in charge of the graphic design of the magazine, trans is currently in the process of redesigning its website [www.trans.ethz.ch](http://www.trans.ethz.ch). trans magazin can be reached via instagram [@trans\\_magazin](https://www.instagram.com/trans_magazin) or via email [trans@arch.ethz.ch](mailto:trans@arch.ethz.ch).



## HIL

The HIL building is shared by D-ARCH and D-BAUG and situated at Stefano-Franscini-Platz 5, 8093 Zurich. The building is currently run by Ronald Schildknecht ([rolandschildknecht@ethz.ch](mailto:rolandschildknecht@ethz.ch)) and belongs to the «Gebäudebereich» HI • The area used by the D-ARCH in HIL totals 9089.1m<sup>2</sup> (4477.8 offices, 3225.4 infrastructure, 1385.9 teaching/edv) • Yearly costs: cleaning: CHF 201 505; maintenance of technical facilities: CHF 231,772; repair: CHF 64,259; total: CHF 497,537

## ONA

The ONA building is rented by the D-ARCH and situated in a former arms factory in Oerlikon, Neunbrunnenstrasse 50, 8093 Zurich. The building is currently run by Simon Wepfer ([simonwepfer@ethz.ch](mailto:simonwepfer@ethz.ch)) and belongs to the «Gebäudebereich» AM • The total area used by the D-ARCH in ONA totals 2433.8m<sup>2</sup> (1122.7 offices, 554.2 infrastructure, 756.8 teaching/edv) • Yearly Costs: cleaning: CHF 77,346; maintenance of technical facilities: CHF 33,051; repair: CHF 13,434; Total CHF 123,831

## Pavilions

The «Pavilions» contain the buildings HIR, HIQ and HIP. The buildings are currently run by Ronald Schildknecht ([rolandschildknecht@ethz.ch](mailto:rolandschildknecht@ethz.ch)) and belongs to the «Gebäudebereich» HI • The total area used by the D-ARCH in the «Pavilions» buildings totals 1460.8 m<sup>2</sup> (297.2 offices, 62 infrastructure, 1101.7 teaching/edv) • Yearly costs: cleaning: CHF 34,168; maintenance of technical facilities: CHF 23,986; repair: CHF 6,252; total: CHF 64,406

### Informatik Support Gruppe (ISG)

The Informatics Support Group (ISG) is provided by the department as part of «ensuring central coordination and support services» (Geschäftsordnung Art. 5). The ISG provides IT services for everyone at the department with a team of nine people. Their office is at space C 37; contact via [helpdesk@arch.ethz.ch](mailto:helpdesk@arch.ethz.ch).

### RAPLAB

The Rapid Architectural Prototyping Laboratory (RAPLAB) is the model making infrastructure maintained by the department as part of «ensuring central coordination and support services» (Geschäftsordnung Art. 5). In the event of space shortage or imposed limitations on usage, for example during the Covid-19 restrictions, access for students in the Master's thesis semester is prioritized. Workshop manager Alessandro Tellini is a delegate in the «Unterrichtskommission» (UK) and therefore generally forms part of ongoing teaching discussions.

### Baubibliothek

The information offered by the «Baubibliothek» ranges from traditional media such as printed books and journals to electronic information resources (over 10 Mio. documents). The collection covers the areas of teaching and research at ETH Zurich: Architecture and Building Sciences, Engineering Sciences, Natural Sciences and Mathematics, System-Oriented Natural Sciences as well as Management and Social Sciences • Furthermore the «Baubibliothek» has workspaces for 150 students, a large format book scanner, consultations and a self-learning center as well as various workshops. The library has a budget for new acquisition and takes requests from any member of the department. As part of the Parity Talks V, the «growing library» was established in order to increase the visibility of this service and to ask for suggestions for new material relating to equity, diversity and inclusion. The library is currently run by Markus Joachim. Contact via: [mathub@arch.ethz.ch](mailto:mathub@arch.ethz.ch). Location: HIL E2

### Baubibliothek Materialsammlung

In collaboration with the «ETH-Bibliothek», the D-ARCH manages the «Materialsammlung», a display comprising over 2000 material samples. The collection is spatially integrated in the «Baubibliothek» with revolving material exhibitions and offers a transdisciplinary platform for research, teaching and scholarship.

### Bibliothek Werner Oechslin

The D-ARCH maintains close cooperation in teaching and research with the Foundation «Bibliothek Werner Oechslin», a research library in Einsiedeln. Werner Oechslin was director of the gta Institute from 1987 to 2006. In 2006, he opened the «Bibliothek Werner Oechslin», in a building built by Mario Botta. The library is a reference library, «Präsenzbibliothek», only, due to the value of the books, and a pre-visit registration via email to [bibliothekar@bibliothek-oeschlin.ch](mailto:bibliothekar@bibliothek-oeschlin.ch) is necessary.

## gta Ausstellungen

gta Exhibitions is the exhibition space of the Institute of the History and Theory of Architecture (gta). gta Exhibitions is currently directed by Fredi Fischli and Niels Olsen. The curators often work collaboratively with researchers, architects, professors and students of the university and invite artists and architects that challenge and enrich the discourse at the school and beyond. gta Exhibitions is partly funded by D-ARCH and gta Institute as well as private or public individual project funding. The gallery spaces are located at campus Höggerberg. Although a few projects take place in other venues. [www.ausstellungen.gta.arch.ethz.ch](http://www.ausstellungen.gta.arch.ethz.ch)

### gta Archiv

The gta Archives has existed since 1967, the foundation of the Institute for the History and Theory of Architecture (gta). gta Archive serves as the «material basis» for gta Institute. The main focus of the gta Archives' collection work is on cohesive original holdings in the fields of architecture, architectural theory, local, regional and national planning, and garden architecture and landscape design, from the nineteenth to the twenty-first centuries. There is a lesser emphasis on outstanding individual documents. The core holdings consist of over 200 collections of the posthumous papers of major figures in these fields (such as the Semper School, «Reformarchitektur» around 1900, pioneers of modernism, «Neues Bauen» and the Solothurn School). The archive office is at HIL C 64/65. [www.archiv.gta.arch.ethz.ch](http://www.archiv.gta.arch.ethz.ch)

### gta Verlag

The gta Verlag, founded in 1985, publishes works on the history and theory of architecture and related disciplines. As part of the Institute for the History and Theory of Architecture (gta), it engages with external and internal research of high scientific and social relevance. A team experienced in every stage of book production accompanies publications throughout their development. International partners ensure worldwide distribution. The «Verlag's» commitment to books in-print is complemented by its support of open access and experiments with hybrid and digital publishing methods. [www.verlag.gta.arch.ethz.ch](http://www.verlag.gta.arch.ethz.ch)

### gta Digital

The gta Digital is dedicated to advanced digital research methods and technology in the history and theory of architecture. It specialises on semantic data modelling, semantic data transformation, and the development of state-of-the-art research methods and research environments for the institutes' own research projects, collection data, and its public research portals. Its main focus is on open, scholarly acknowledged, yet extendable concept reference models for cultural heritage, such as the CIDOC-CRM. Entirely based on internationally established standards for data storage and exchange (such as OWL, RDF, RDF-S, SKOS), gta Digital provides domain-specific, state-of-the-art research environments that allow researchers to gain access to the global linked data network. [www.digital.gta.arch.ethz.ch](http://www.digital.gta.arch.ethz.ch)

### ETH Store

The ETH Store is a main infrastructural element for members of the D-ARCH. ETH Store AG is partially owned by the VSETH. A committee of six students is constantly working together with ETH Store to discuss current needs. Students are always part of the administrative board and are elected at the «Mitgliederratssitzung» (MR).

## Total keys in D-ARCH

1183 keys are currently (December 2020) circulating amongst members of the D-ARCH. Keys are requested via the Real Estate Services Portal and as a general rule are not issued to students. The cost for replacing a lost key is CHF 200 and in the case of deliberate intent or gross negligence, the cost of replacing all keys and cylinders.

### Please Note

The information in this Glossary is meant for information purposes only. No legal responsibility is taken for the correctness of this information by trans magazin or the authors. The rules and regulations may have changed in the meantime. For legally binding information please contact the relevant department of ETH Zurich.