

**Zeitschrift:** Swiss textiles [English edition]  
**Herausgeber:** Swiss office for the development of trade  
**Band:** - (1958)  
**Heft:** 3

**Artikel:** Los Angeles letter  
**Autor:** Miller, Helene  
**DOI:** <https://doi.org/10.5169/seals-798912>

### **Nutzungsbedingungen**

Die ETH-Bibliothek ist die Anbieterin der digitalisierten Zeitschriften. Sie besitzt keine Urheberrechte an den Zeitschriften und ist nicht verantwortlich für deren Inhalte. Die Rechte liegen in der Regel bei den Herausgebern beziehungsweise den externen Rechteinhabern. [Siehe Rechtliche Hinweise.](#)

### **Conditions d'utilisation**

L'ETH Library est le fournisseur des revues numérisées. Elle ne détient aucun droit d'auteur sur les revues et n'est pas responsable de leur contenu. En règle générale, les droits sont détenus par les éditeurs ou les détenteurs de droits externes. [Voir Informations légales.](#)

### **Terms of use**

The ETH Library is the provider of the digitised journals. It does not own any copyrights to the journals and is not responsible for their content. The rights usually lie with the publishers or the external rights holders. [See Legal notice.](#)

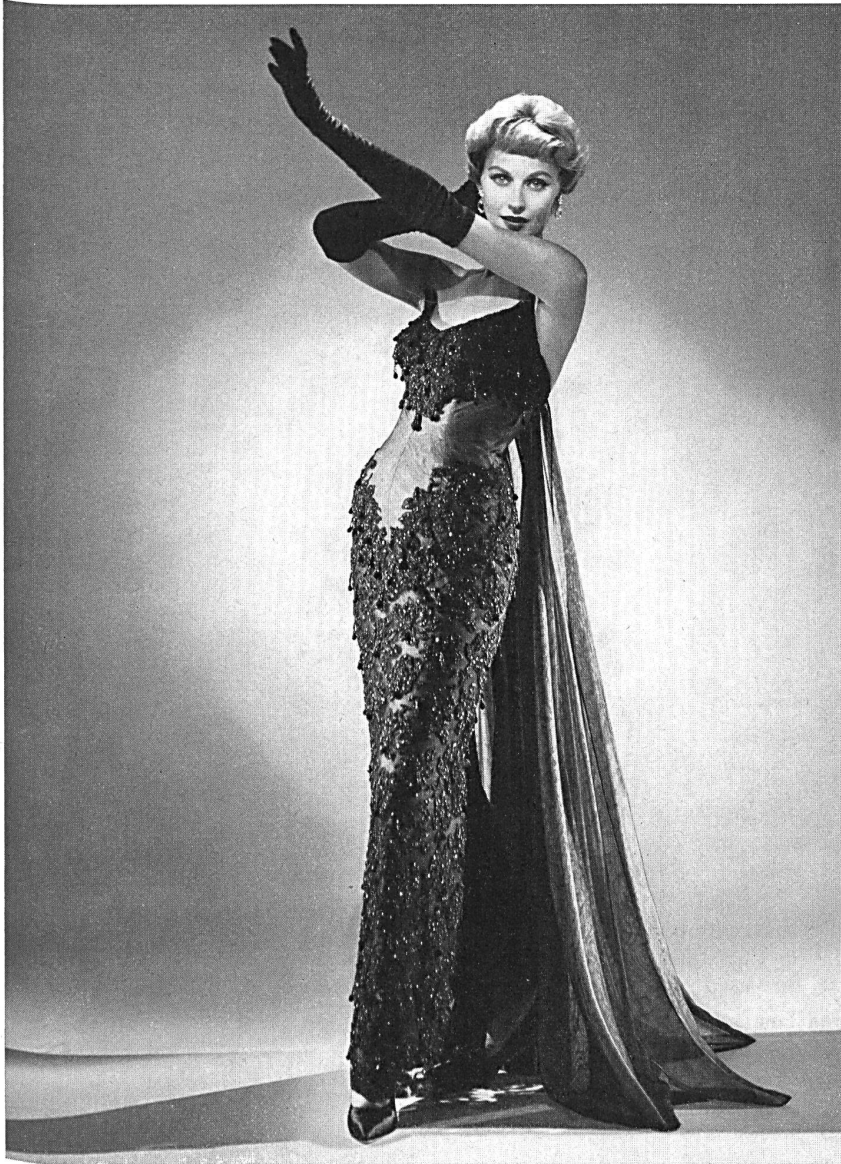
**Download PDF:** 17.03.2025

**ETH-Bibliothek Zürich, E-Periodica, <https://www.e-periodica.ch>**

LOS ANGELES  
JAN 17  
6 30 PM  
1958  
CALIF.



## Los Angeles Letter



NEUBURGER & Co. S.A.,  
SAINT-GALL  
Reembroidered lace.  
Model Don Loper, Los Angeles.  
Photo John Engstead.

### *TODAY'S DESIGNER — A MULTI-FACETED MAN*

Recently returned from a most successful European tour, Don Loper, Hollywood's most widely talented designer, presented his new collection to the press in the quiet elegance of his Beverly Hills home. The effect was nothing less than bombshell from this unendingly and prolific designer of custom clothes, menswear, shoes,

interiors and theatrical costumes who once knew fame as a dancer and choreographer, as well.

He loudly deplored the fashion-line that destroys rather than glorifies a woman's beauty. His collection, therefore, is composed of "kinds" of clothes rather than "styles" of clothes. Among these are shaggy soft tweeds combined



HEER & Co. Ltd., THALWIL  
Brown and white silk tweed.  
Model Don Loper, Los Angeles.

with sleek, finely knit Swiss wools for day wear, furs used like fabrics over Swiss silks and re-embroidered laces, or cut velvets re-worked in shapes to glamorise the entrance of any great lady for a very special evening.

His entire new collection of one hundred pieces is almost completely a costume collection of dresses and jackets, dresses and coats, dresses and furs, theatre suits, long, dinner dresses with trains to be worn with jackets and dancing dresses with their matching reversible satin or fur-lined coats.

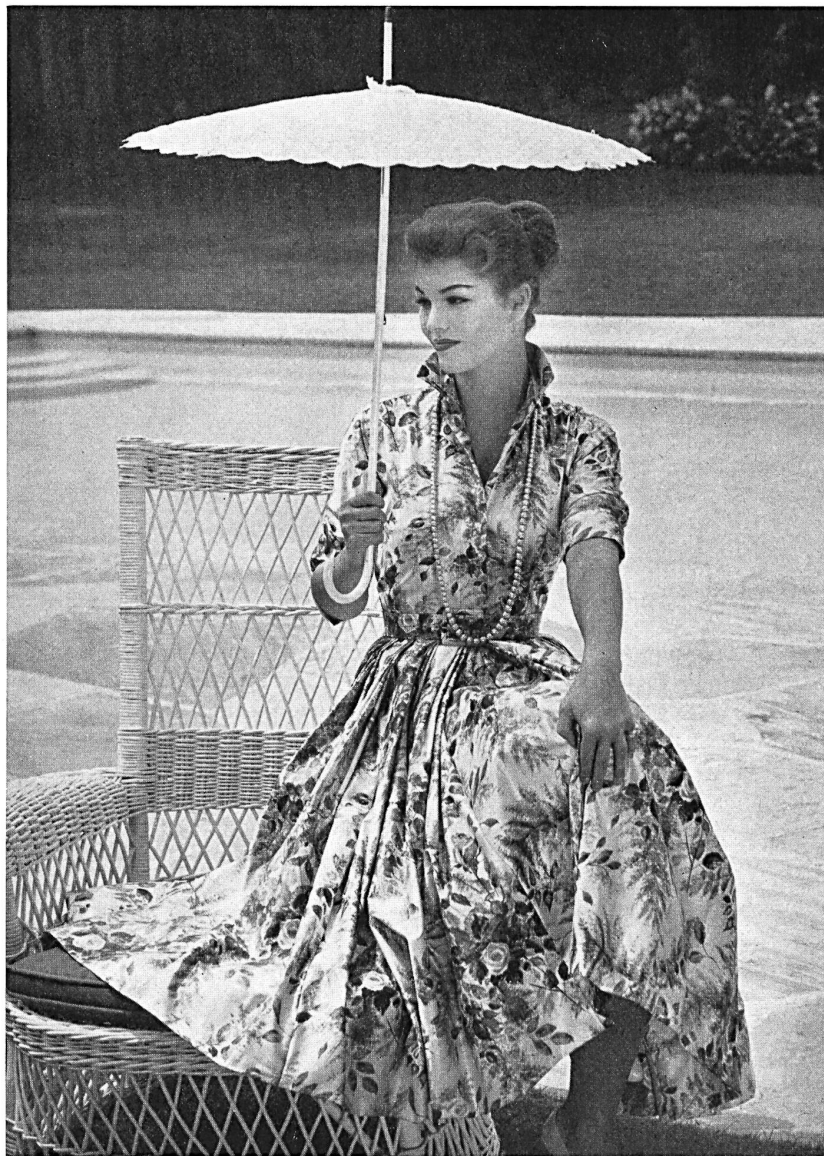
Dancing skirts are all full. Daytime clothes, often in suave Swiss sheer wools, are form-fitting and custom-detailed enough to be glove-like. "Quiet" evening or theatre clothes are usually cut close to the body and fulfill their function to the  $n^{\text{th}}$  degree—making women utterly beautiful.

Altho Loper prefers black and white above all colors because of their architectural purity, his fantastic color sense cannot be denied. In this collection he centers on high shades of emerald greens, cherry and garnet reds, a slate-like deep blue for late afternoon and evening as well as a lavish use of blush pink with white. Daytime colors are very muted shades of olive greens, violet, orange-reds and a colored taupe which he pin-points as "pink mink", and it is.

Since the recent trip abroad, Loper's clothes will now be sold in various European capitals. Shortly, we hope, Swiss craftsmen will have an opportunity to see how an American designer handles their fabrics with the elegance, reverence and cleverness they deserve.

*Helene Miller*

«NELO», J. G. NEF & Co. Ltd.,  
HERISAU  
Nelo-Shinosa cotton fabric.  
Model California Shirt worn by MGM  
Star Claire Kelly.  
Photo John Engstead.



«NELO», J. G. NEF & Co. Ltd.,  
HERISAU  
Nelo-Lugano cotton fabric.  
Model Lanz of California  
worn by MGM Star Gera Rowlands.  
Photo John Engstead.